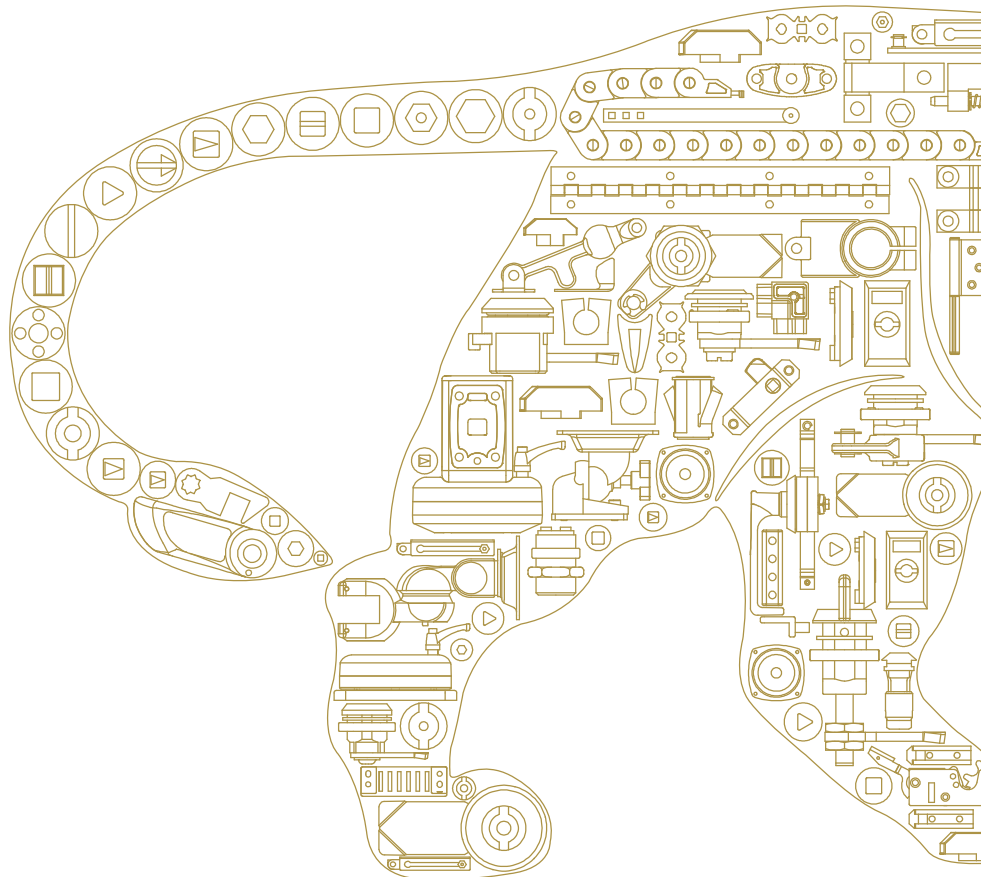


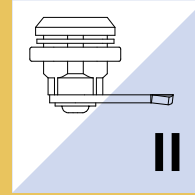
# Part Code Index

Product Name	Material	Page
Small Quarter Turn Locks	Zinc, MS	86
	Polyamide, MS	
	Polyamide, Zinc, MS	87
	Zinc, Polyamide	88
	Zinc, MS	
Push Locks	Zinc	89
Quarter Turn Lock-Wing Knob	Zinc, Polyamide, MS	90
Handle Knob Lock	Zinc, MS	91
Spring Loaded Lock		
Quarter Turn Multiple Point Lock		
Quarter Turn Lock	Polyamide, Zinc, SS-304, MS	92
	Zinc, MS	93
Quarter Turn Lock-Wing Knob	Polyamide, MS	94
Rotary Adjustable Grip Lock		
Fascia Lock		
Safety Lock	Zinc, MS	96
Anti-Vibration Lock		

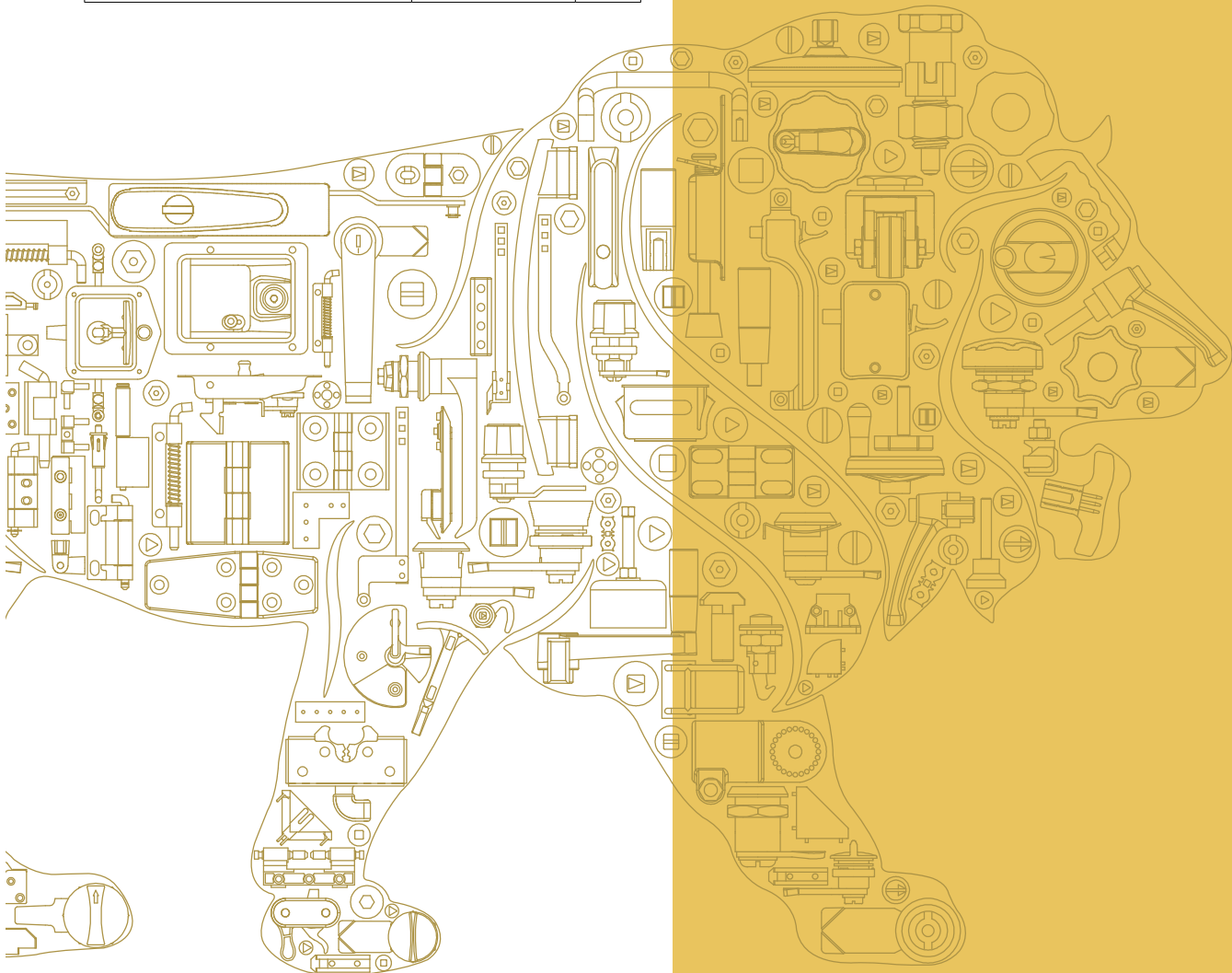
Product Name	Material	Page
Quarter Turn Lock	SS-304	97
Anti-Vibration Lock		
Quarter Turn Lock		98
Spring Loaded Lock	Zinc, MS	99
		100
Compression Lock		101
Quarter Turn Lock		102
Slam Lock		Zinc
	Polyamide, Zinc, SS	
Quarter Turn Lock	Polyamide, Zinc, MS	104
Key	Brass	
Quarter Turn Pad Lock	Zinc, Ms	105
Wing Knob Pad Lock		
Wing Knob Lock	Zinc, Polymaid, MS	106
'L' Handle Lock		107
Pad Lock 'L2' Handle	Zinc, MS	108



Product Name	Material	Page
Lift & Turn Compression Swing Handle 'L4'	Zinc, Polyamide, MS	109
Rotary 'L' Handle Lock	Zinc, MS	
'T' Handle Lock	Zinc, Polyamide, MS	110
Rotary 'T' Handle Lock		
Compression Swing Handle		111
Lift & Turn Compression Swing Handle	Zinc, MS	112
Push Lock-DM11		113
Swing Handle-D14SL		114
Push Lock-DM20	Zinc, MS	115
Pad Lock Handle-DM25		
Airtight Handle	Zinc	116
Actuator Handle	Polyamide	
Refrigeration Lock	Zinc	117
		118
		119



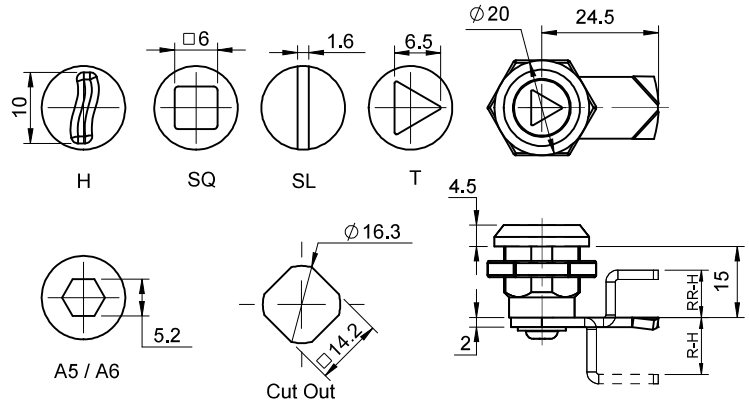
# LOCKS



# LOCKS

## Small Quarter Turn Locks

Zinc, MS



**X** Inner Type

- H** Holding Knob
- SQ** Square
- SL** Slot

**X** Inner Type

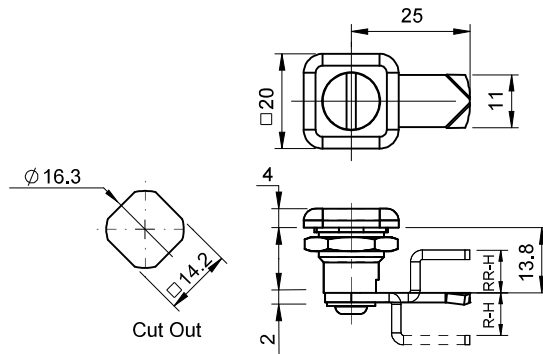
- T** Triangle
- A5** Allen 5
- A6** Allen 6

**D M L C 6 - X - R**

Nut Material	Body Material	Body Finish	Inner Material	Inner Finish	Cam Material	Cam Finish
Zinc	Zinc	CH	Zinc	CH	MS	Blue Zinc
Grip (R-H / RR-H) can be adjusted in 2 mm range						
Add 'PC' at the end for Black Powder Coated Finish						

## Small Quarter Turn Locks

Polyamide, MS

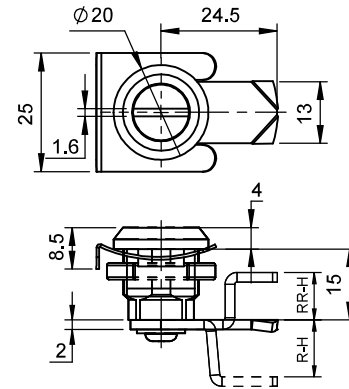
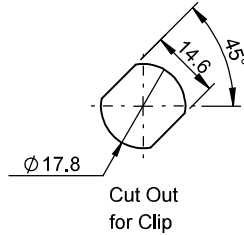


**D L C 3 - RSQ**

Nut Material	Body Material	Inner Material	Cam Material	Cam Finish
MS	Polyamide	Polyamide	MS	Blue Zinc
Grip (R-H / RR-H) can be adjusted in 2 mm range				

## Small Quarter Turn Locks

Polyamide, Zinc, MS



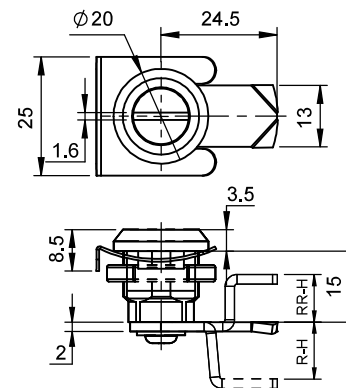
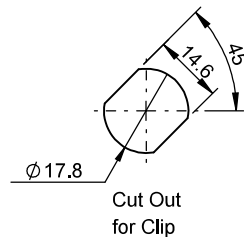
**D M L C 6 C - S L - R**

Part Code	Clip Material	Body Material	Body Finish	Inner Material	Inner Profile	Inner Finish	Cam Material	Cam Finish
<b>DMLC6C-SL-R</b>	Sp. Steel	Zinc	CH	Zinc	SL	CH	MS	Blue Zinc
<b>DLC5-SL-R</b>		Polyamide		Polyamide				

Grip (R-H / RR-H) can be adjusted in 2 mm range

## Small Quarter Turn Locks

Polyamide, Zinc, MS



**D M L C K 5 - R**

Part Code	Clip Material	Body Material	Body Finish	Barrel Material	Barrel Finish	Cam Material	Cam Finish	Key
<b>DMLCK5-R</b>	Sp. Steel	Zinc	CH	Zinc	CH	MS	Blue Zinc	D-2233
<b>DLCK5-R</b>		Polyamide		Polyamide				

Grip (R-H / RR-H) can be adjusted in 2 mm range

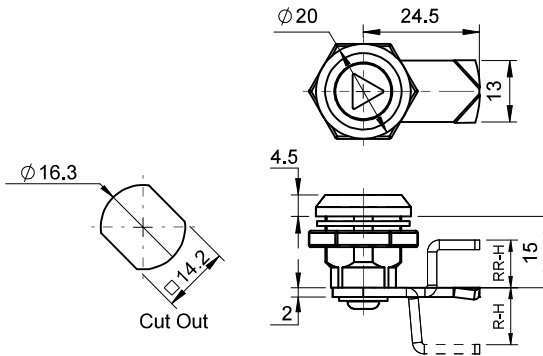




# LOCKS

## Small Quarter Turn Key Locks

Zinc, Polyamide



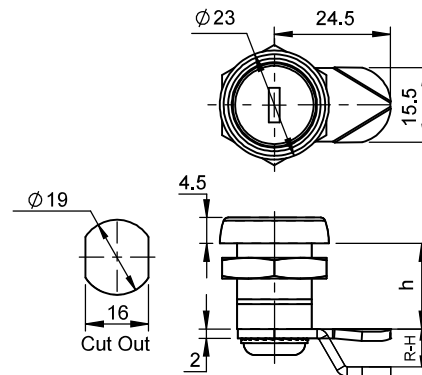
**D M L K 5 - R**

Part Code	Clip Material	Body Material	Body Finish	Inner Material	Inner Profile	Inner Finish	Cam Material	Cam Finish	Key
<b>DMLK5-R</b>	Sp. Steel	Zinc	CH	Zinc	SL	CH	MS	Blue Zinc	D-5-1
<b>DLK5-R</b>		Polyamide		Polyamide					

Grip (R-H / RR-H) can be adjusted in 2 mm range

## Small Quarter Turn Key Locks

Zinc, MS



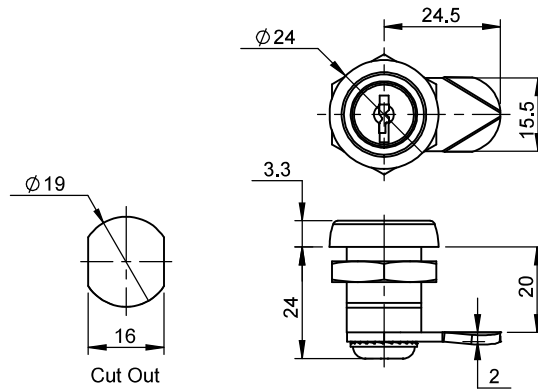
**D M L K - X - M R S Q - R**

<b>X Part Code</b>	Nut Material	Body Material	Body Finish	Barrel Material	Barrel	Barrel Finish	Cam Material	Cam Finish	Key	h
<b>DMLK-S1-MRSQ-R8</b>	Zinc	Zinc	CH	Zinc	Plain	CH	MS	Blue Zinc	D-1333	16.8
<b>DMLKSS-S1-MRSQ-R</b>					Shutter					
<b>DMLK-S2-MRSQ-R-BZ</b>					Plain	CH			D-2233	15.7
<b>DMLK-S3-MRSQ-R4</b>					Shutter					
<b>DMLKSS-S3-MRSQ-R</b>									D-1333	18

Grip (R-H / RR-H) can be adjusted in 2 mm range

**Small Quarter Turn Key Locks**

Zinc, MS



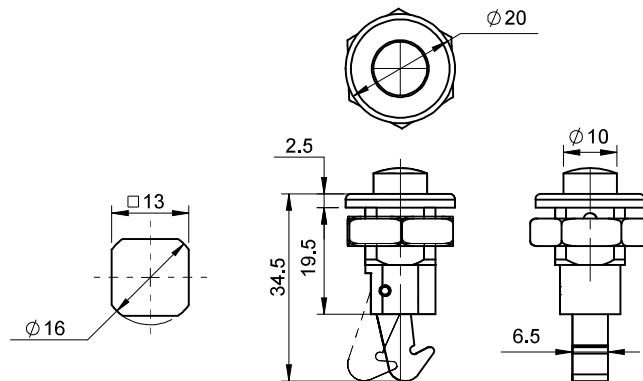
**D M L K - S4 - M R S Q - R**

Part Code	Nut Material	Body Material	Body Finish	Barrel Material	Barrel Finish	Cam Material	Cam Finish	Key
<b>DMLK-S4-MRSQ-R</b>	Zinc	Zinc	CH	Zinc	CH	MS	Blue Zinc	D-1555

Combination available for 001 to 999

**Push Locks**

Zinc



**D M S L P**

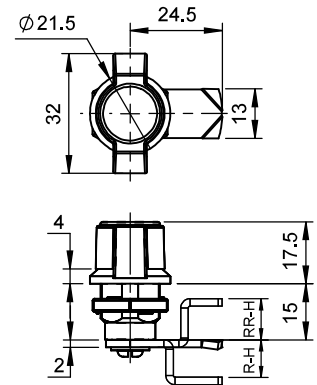
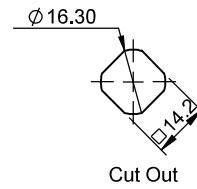
Part Code	Nut Material	Body Material	Body Finish	Inner Material	Inner Finish	Slam Material	Slam Finish
<b>DMSLP</b>	Zinc	Zinc	CH	Zinc	CH	Zinc	Raw

- II
- I
- II
- III
- IV
- V
- VI
- VII
- VIII
- IX
- X
- XI
- XII
- XIII
- XIV

# LOCKS

## Quarter Turn Lock-Wing Knob

Zinc, Polyamide, MS

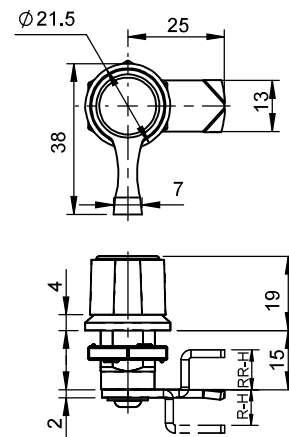
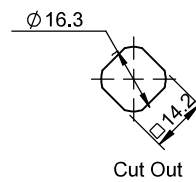


**D L C 4 W - R**

Part Code	Nut Material	Body Material	Body Finish	Inner Material	Inner Finish	Cam Material	Cam Finish	Key
<b>DLC4W-R</b>	Zinc	Polyamide		Polyamide		MS	Blue Zinc	D-2233
<b>DMLC4WM-R</b>		Zinc	PC	Zinc	PC			
<b>DMLC4WMK-R5-CH</b>		Zinc	CH		CH			

## Handle Knob Lock

Zinc, MS



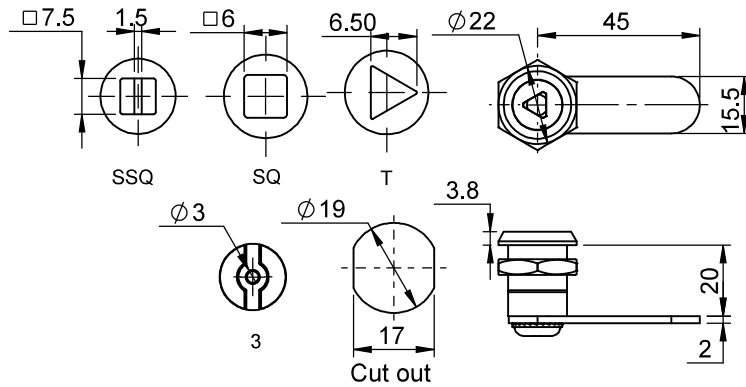
**D M L C 4 - HS - R**

Part Code	Nut Material	Body Material	Body Finish	Cam Material	Cam Finish
<b>DMLC4-HS-R</b>	Zinc	Zinc	PC	MS	Blue Zinc

Grip (R-H / RR-H) can be adjusted in 2 mm range.

**Spring Loaded Lock**

Zinc, MS



**X** Inner Type

**3** 3-Bit

**SSQ** Slotted Square

**SQ** Square

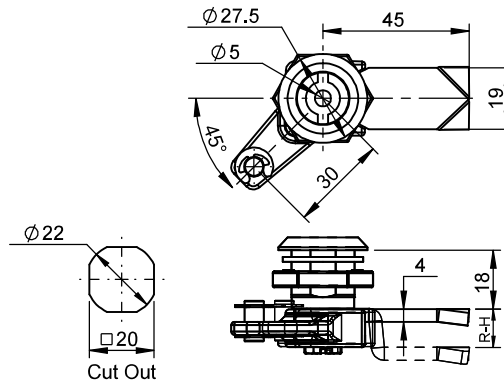
**T** Triangle

**D M S C L - 20 - X - MRSQ - R**

Nut Material	Body Material	Body Finish	Inner Material	Inner Finish	Cam Material	Cam Finish
Zinc	Zinc	CH	Zinc	CH	MS	Blue Zinc
Grip (R-H / RR-H) can be adjusted in 2 mm range						
Add 'PC' at the end for Black Powder Coated Finish						

**Quarter Turn Multiple Point Lock**

Zinc, MS



**D M C E - 5 - MR**

Nut Material	Body Material	Body Finish	Inner Material	Inner Finish	Cam Material	Cam Finish
Zinc	Zinc	CH	Zinc	CH	MS	Blue Zinc
Grip (R-H) can be adjusted in 2 mm rang						
Add "PC" at the end for Black Powder Coated Finish						
Add Flat Rods with mounting holes to desired lengths for Multi Point Locking arrangement						
For linking Cam Part Code : <b>DMRE-MR</b>						

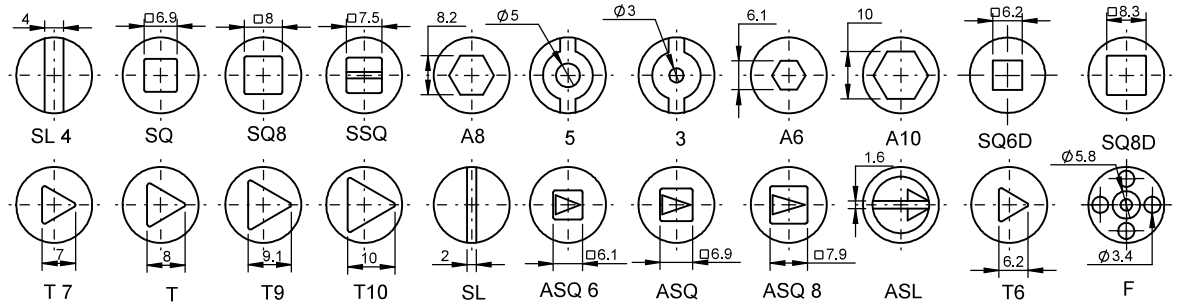
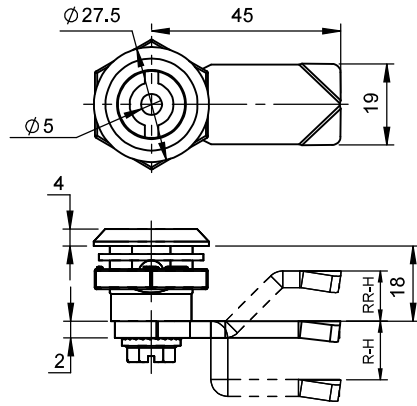


# LOCKS

## Quarter Turn Lock

Polyamide, Zinc, SS, MS

- II
- I
- II
- III
- IV
- V
- VI
- VII
- VIII
- IX
- X
- XI
- XII
- XIII
- XIV



**A** Material  
**M** Zinc  
**P** Polyamide

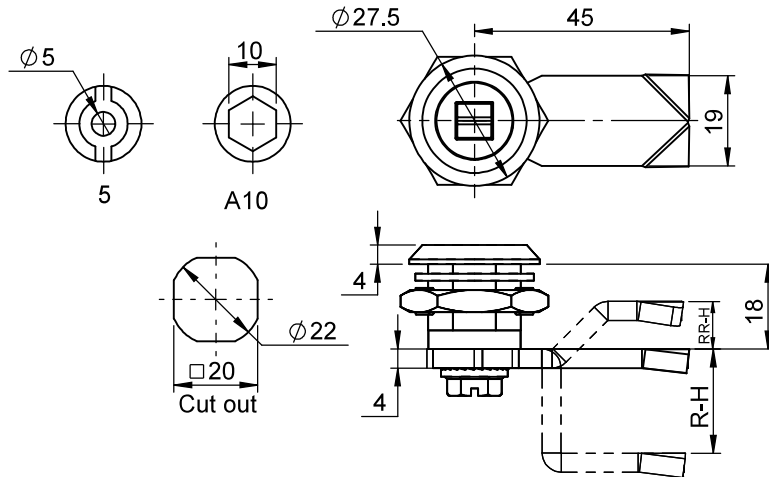
**D** **A** **C** **L** - **X** - **M** **R**

**X** Inner

Nut Material	Body Material	Inner Material	Cam Material	Cam Finish
	Zinc / Polyamide		MS	Blue Zinc
Grip (R-H / RR-H) can be adjusted in 2 mm range				
Standard finish for Zinc is Chrome Plating				
Add 'PC' at the end for Black Powder Coated Finish for Zinc				
Above mentioned Keys are available in Zinc, Polyamide, SS-304				
Above Inner Styles are available in Zinc, Polyamide				

**Quarter Turn Lock**

Zinc, MS



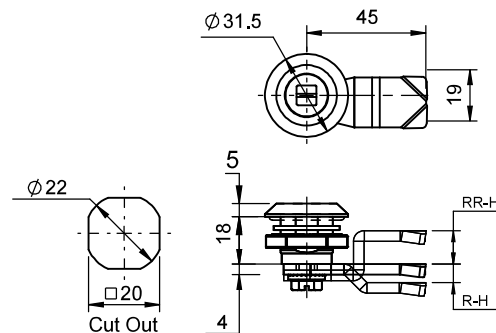
- X** Inner Type
- 5** 5-Bit
- A10** Allen-10

**D M C L - 182 - X - MR**

Nut Material	Body Material	Body Finish	Inner Material	Inner Finish	Cam Material	Cam Finish
Zinc	Zinc	CH	Zinc	CH	MS	Blue Zinc
Grip (R-H / RR-H) can be adjusted in 2 mm range						
Add 'PC' at the end for Black Powder Coated Finish						

**Quarter Turn Lock**

Zinc, MS



- X** Inner Type
- 5** 5-Bit
- SSQ** Slotted Square
- SQ** Square
- ASQ8** Arrow Square

**D M A C L - X - MR**

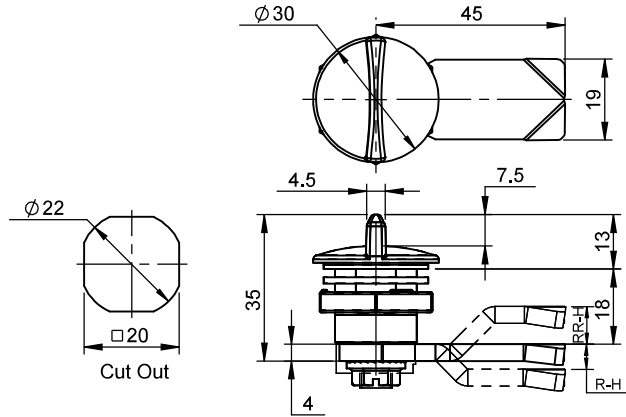
Nut Material	Body Material	Body Finish	Inner Material	Inner Finish	Cam Material	Cam Finish
Zinc	Zinc	CH	Zinc	CH	MS	Blue Zinc
Grip (R-H / RR-H) can be adjusted in 2 mm range						
Add 'PC' at the end for Black Powder Coated Finish						



# LOCKS

## Quarter Turn Lock-Wing Knob

Zinc, MS

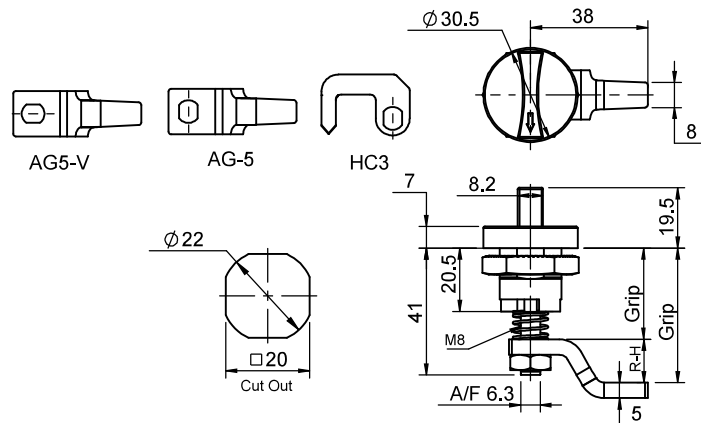


**D K M C L - MR**

Nut Material	Body Material	Body Finish	Cam Material	Cam Finish
Zinc	Zinc	PC	MS	Blue Zinc
Grip (R-H / RR-H) can be adjusted in 2 mm range				
Add 'PC' at the end for Black Powder Coated Finish				

## Rotary Adjustable Grip Lock

Polyamide, MS



**X**

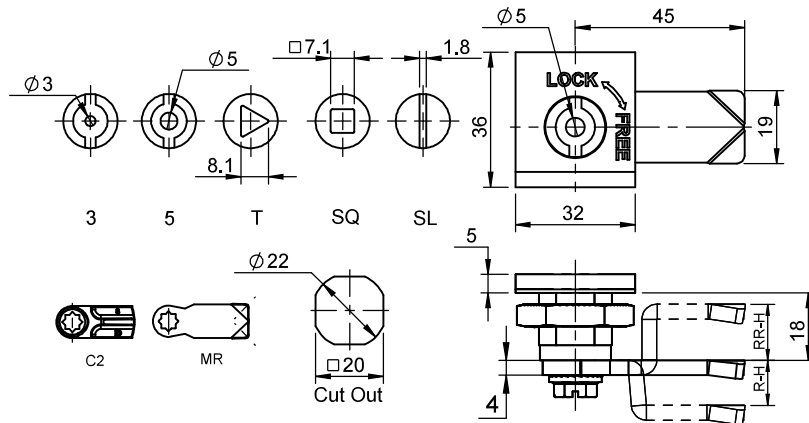
**HC3**  
**AG5**  
**AG5-V**

**D P A G - X**

Nut Material	Body Material	Cam Material	Cam Finish
Polyamide	Polyamide	MS	Blue Zinc
Grip (R-H / RR-H) can be adjusted in 2 mm range			

**Fascia Lock**

Polyamide, MS



- A** Material  
**M** Zinc  
**P** Polyamide

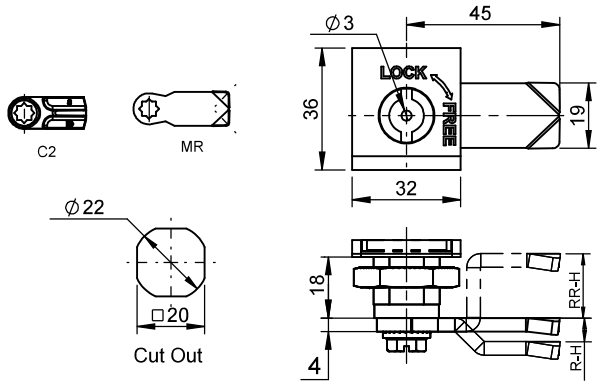
- X** Inner Type  
**3** 3-Bit  
**5** 5-Bit  
**SQ** Square  
**T** Triangle  
**SL** Slot

**D** **A** **R** **C** **L** - **X** - **MR**

Nut Material	Body Material	Body Finish	Inner Material	Inner Finish	Cam Material	Cam Finish
Polyamide	Zinc / Polyamide	CH	Zinc / Polyamide	CH	MS	Blue Zinc
Grip (R-H / RR-H) can be adjusted in 2 mm range						
Add "PC" at the end for Black Powder Coated Finish						
For Polyamide Cam - Replece "MR" with "C2"						

**Fascia Lock**

Polyamide, MS



- X** Cam Material  
**MR** MS  
**C2** Polyamide

**D** **P** **R** **C** **L** **1** - **3** **M** - **X**

Nut Material	Body Material	Inner Material	Inner Finish	Cam Material	Cam Finish
Zinc	Polyamide	Zinc	CH	MS / Polyamide	Blue Zinc
Grip (R-H / RR-H) can be adjusted in 2 mm range					

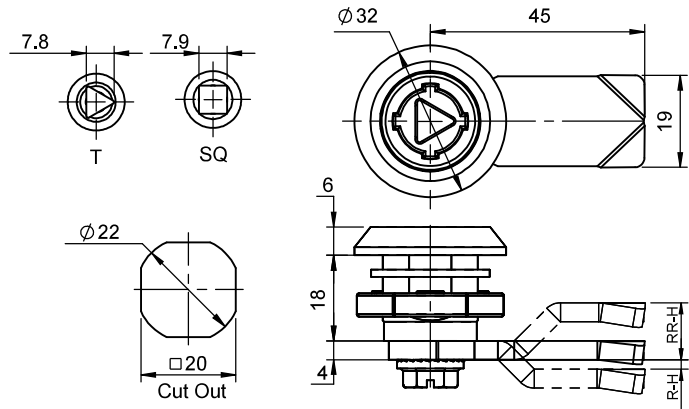




# LOCKS

## Safety Lock

Zinc, MS



**X** Inner Type

**SQ** Square

**T** Triangle

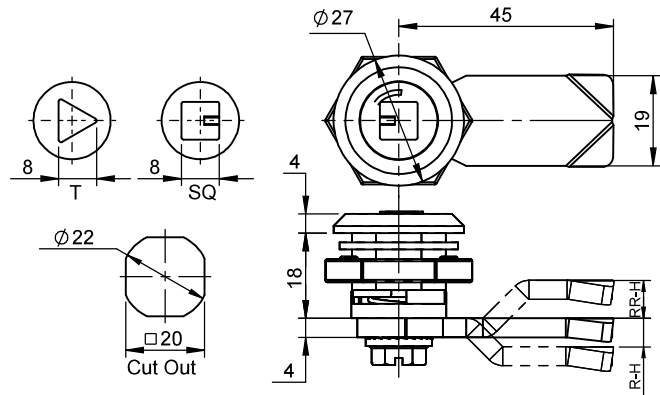
**D M S F - X - MR**

Nut Material	Body Material	Body Finish	Inner Material	Inner Finish	Cam Material	Cam Finish
Zinc	Zinc	CH	Zinc	CH	MS	Blue Zinc

Grip (R-H / RR-H) can be adjusted in 2 mm range

## Anti-Vibration Lock

Zinc, MS



**X** Inner Type

**SQ** Square

**T** Triangle

**D M S C L - 18 - X - MR**

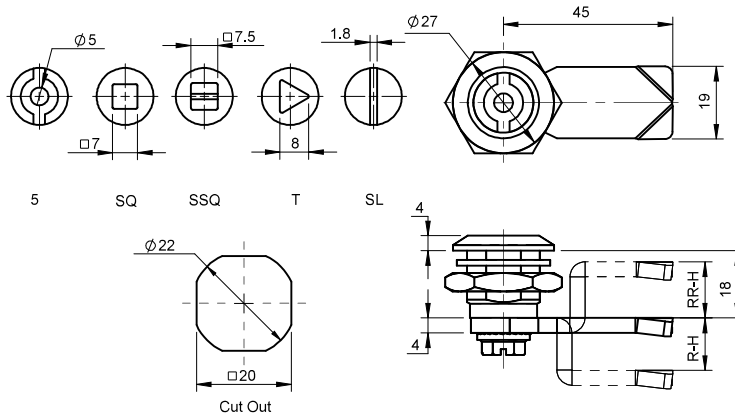
Nut Material	Body Material	Body Finish	Inner Material	Inner Finish	Cam Material	Cam Finish
Zinc	Zinc	CH	Zinc	CH	MS	Blue Zinc

Grip (R-H / RR-H) can be adjusted in 2 mm range

Add 'PC' at the end for Black Powder Coated Finish

Quarter Turn Lock SS

SS-304



**X** Inner Type

- SSQ** Slotted Square
- 5** 5-Bit
- SQ** Square
- T** Triangle
- SL** Slot

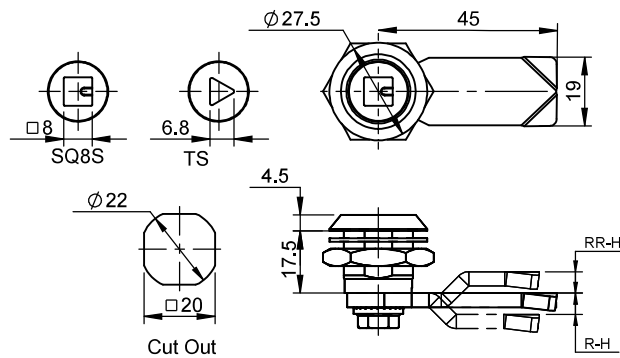
**D R S - X S - SR**

Nut Material	Body Material	Body Finish	Inner Material	Inner Finish	Cam Material	Cam Finish
SS-304	SS-304	EP	SS-304	EP	SS-304	EP

Grip (R-H / RR-H) can be adjusted in 2 mm range

Anti-Vibration Lock SS

SS-304



**X** Inner Type

- SQ8** Square
- T** Triangle

**D R S C L - X S - SR**

Nut Material	Body Material	Body Finish	Inner Material	Inner Finish	Cam Material	Cam Finish
SS-304	SS-304	EP	SS-304	EP	SS-304	EP

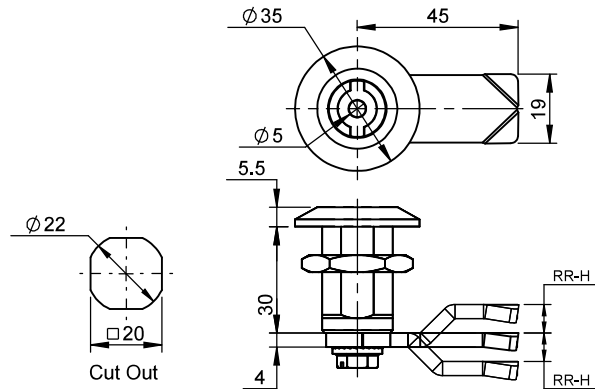
Grip (R-H / RR-H) can be adjusted in 2 mm range



# LOCKS

## Quarter Turn Lock SS

SS-304



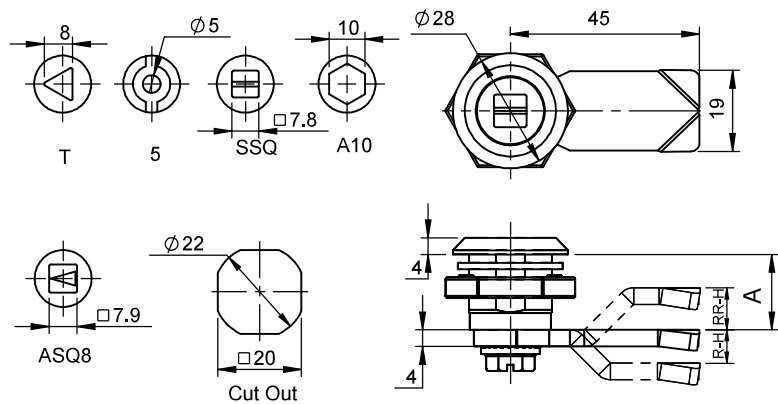
**D R S 3 - 5S - SR**

Nut Material	Body Material	Body Finish	Inner Material	Inner Finish	Cam Material	Cam Finish
SS-304	SS-304	EP	SS-304	EP	SS-304	EP

Grip (R-H / RR-H) can be adjusted in 2 mm range

## Spring Loaded Lock

Zinc, MS



### **X** Inner Type

**ASQ8** Arrow Square

**5** 5-Bit

**SQ** Square

**T** Triangle

**SSQ** Slotted Square

**A10** Allen-10

**D M S C L - A - X - MR**

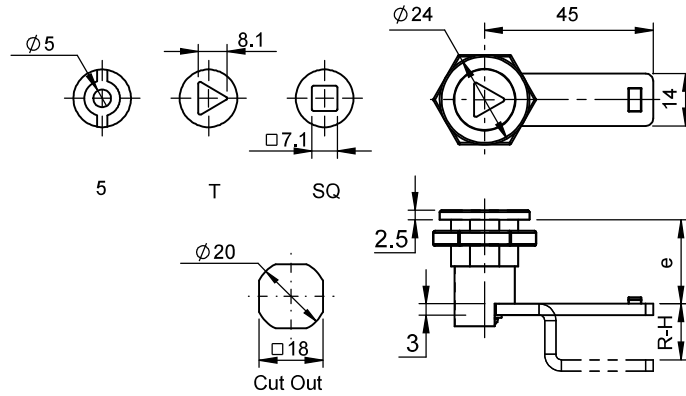
<b>A</b>	Nut Material	Body Material	Body Finish	Inner Material	Inner Finish	Cam Material	Cam Finish
18 / 30	Zinc	Zinc	CH	Zinc	CH	MS	Blue Zinc

Grip (R-H / RR-H) can be adjusted in 2 mm range

Add 'PC' at the end for Black Powder Coated Finish

**Spring Loaded Lock**

Zinc, MS



**X** Inner Type

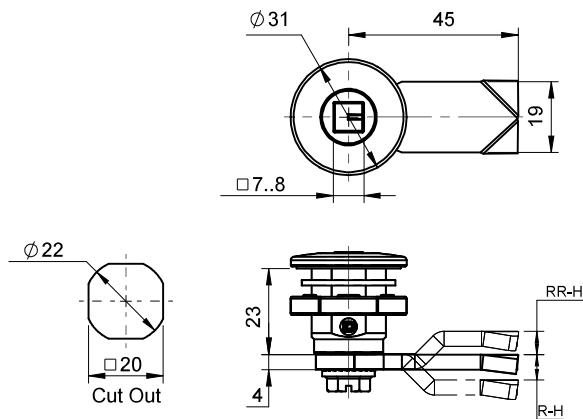
- 5** 5-Bit
- SQ** Square
- T** Triangle

**D M S C L - X - M R S**

<b>e</b>	Nut Material	Body Material	Body Finish	Inner Material	Inner Finish	Cam Material	Cam Finish
<b>22.5 / 30</b>	Zinc	Zinc	CH	Zinc	CH	MS	Blue Zinc
Grip (R-H / RR-H) can be adjusted in 2 mm range							
Add 'PC' at the end for Black Powder Coated Finish							

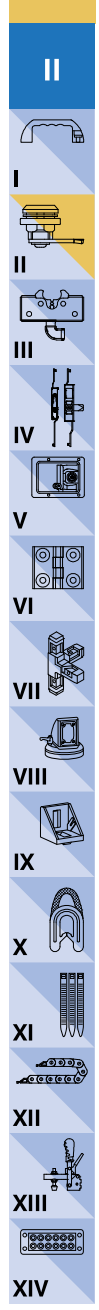
**Spring Loaded Lock**

Zinc, MS



**D M S L 23 - SQ8N - MR**

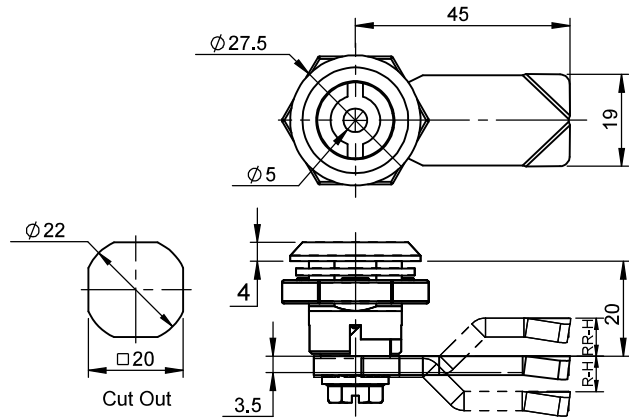
Nut Material	Body Material	Body Finish	Inner Material	Inner Finish	Cam Material	Cam Finish
Zinc	Zinc	CH	Zinc	CH	MS	Blue Zinc
Grip (R-H / RR-H) can be adjusted in 2 mm range						



# LOCKS

## Spring Loaded Lock

Zinc, MS



**X** Inner Type

**5** 5-Bit

**SQ** Square

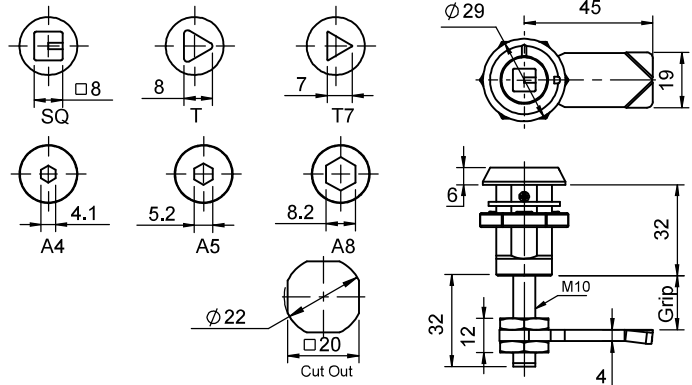
**T** Triangle

**D M C O - X - MR**

Nut Material	Body Material	Body Finish	Inner Material	Inner Finish	Cam Material	Cam Finish
Zinc	Zinc	CH	Zinc	CH	MS	Blue Zinc
Grip (R-H / RR-H) can be adjusted in 2 mm range						
Replace "RS" in place of "M" for Stainless Steel : <b>DRSCO-XS-SR</b>						

## Compression Lock

Zinc, MS



**X** Inner Type

**SQ** Square

**T** Triangle

**T7** 7mm Triangle

**D M C O 1 - X - MR**

**X** Inner Type

**A4** Allen-4

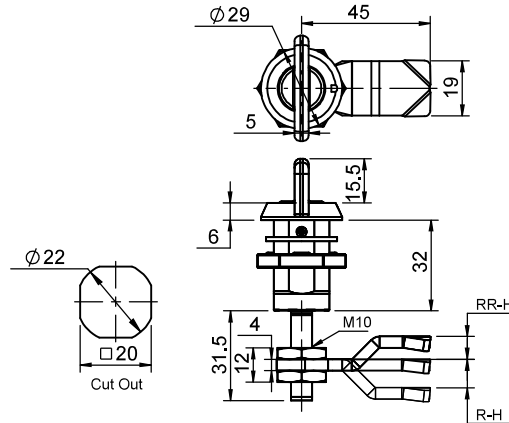
**A5** Allen-5

**A8** Allen-8

Nut Material	Body Material	Body Finish	Inner Material	Inner Finish	Cam Material	Cam Finish
Zinc	Zinc	CH	Zinc	CH	MS	Blue Zinc
For "SS" : <b>DRSCO1-30-SQ-SR</b>						
Grip (R-H / RR-H) can be adjusted in 2 mm range						

**Compression Lock**

Zinc, MS

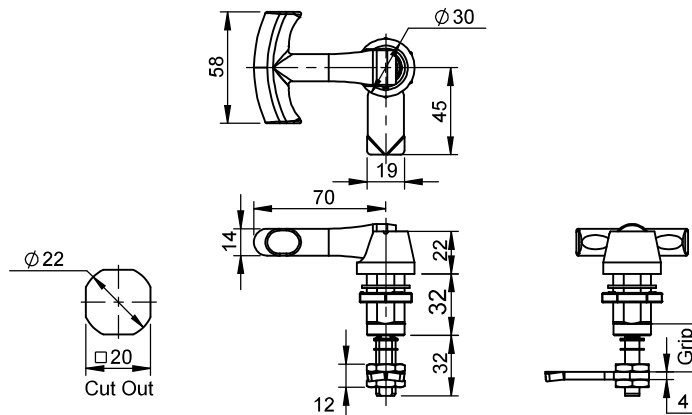


**D K M C O 1 - MR**

Nut Material	Body Material	Body Finish	Inner Material	Inner Finish	Cam Material	Cam Finish
Zinc		CH	Zinc	PC	MS	Blue Zinc
For "SS" : <b>DRKSCO1-SR</b>						
Grip (R-H / RR-H) can be adjusted in 2 mm range						

**Compression Lock**

Zinc, MS



**D M C O 2 T - G - MR - PC**

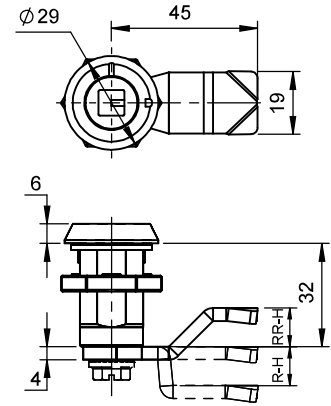
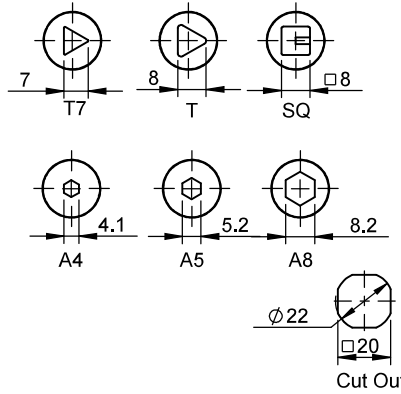
Nut Material	Body Material	Body Finish	Inner Material	Inner Finish	Cam Material	Cam Finish
Zinc		PC	Zinc	PC	MS	Blue Zinc
Grip (R-H / RR-H) can be adjusted in 2 mm range						

- II
- I
- II
- III
- IV
- V
- VI
- VII
- VIII
- IX
- X
- XI
- XII
- XIII
- XIV

# LOCKS

## Quarter Turn Lock

Zinc, MS



**X** Inner Type

- SQ** Square
- T** Triangle
- T7** 7mm Triangle
- 5** 5-Bit

**X** Inner Type

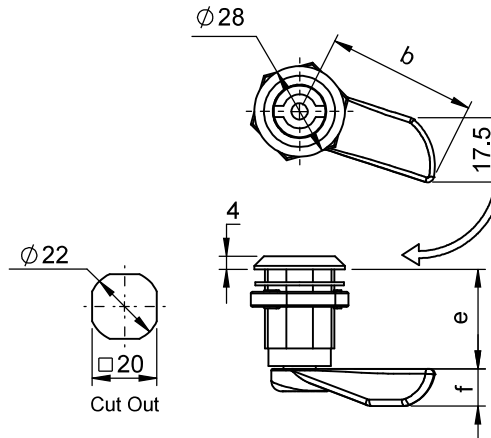
- A4** Allen-4
- A5** Allen-5
- A8** Allen-8

**D M C O 4 - X - M**

Nut Material	Body Material	Body Finish	Inner Material	Inner Finish	Cam Material	Cam Finish
Zinc	Zinc	CH	Zinc	CH	MS	Blue Zinc
Grip (R-H / RR-H) can be adjusted in 2 mm range						
Add 'PC' at the end for Black Powder Coated Finish						

## Slam Lock

Zinc, MS



**X** Inner Type

- 3** 3-Bit
- 5** 5-Bit

**Y** Orientation

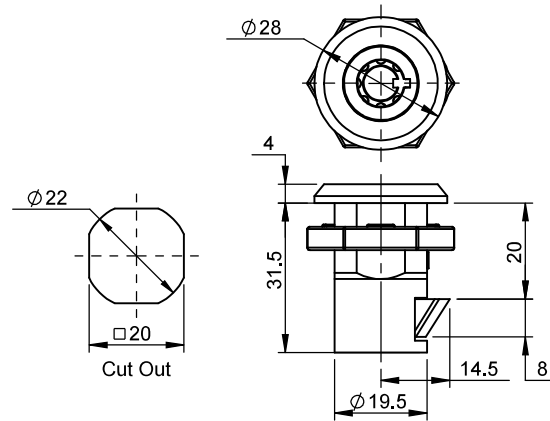
- L** Left
- R** Right

**D M C L - X - LS b - Y - CH**

Nut Material	Body Material	Body Finish	Inner Material	Inner Finish	Cam Material	Cam Finish	b	e	f	
Zinc	Zinc	CH	Zinc	CH	Zinc	CH		21	9.8	
								45	31	11.5
"b" is 35mm as standard, 45mm is also available as option										
Grip (R-H / RR-H) can be adjusted in 2 mm range										
Replace "3" in place of "CL" for 30mm Outer Height										

## Slam Lock

Zinc

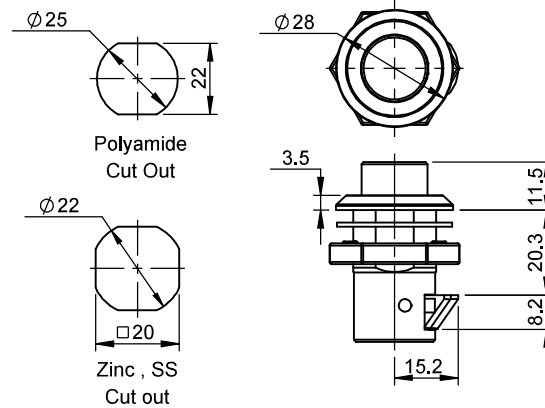


**D M L S 8**

Nut Material	Body Material	Body Finish	Barrel Material	Barrel Finish	Cam Material	Cam Finish
Zinc	Zinc	CH	Zinc	CH	Zinc	CH

## Slam Locks

Polyamide, Zinc, SS



**D M L S P**

Nut Material	Body Material	Push Material	Cam Material
Zinc / Polyamide / Stainless Steel			
Standard finish for Zinc is Chrome Plating			
Remove "M" from the Part Code for Polyamide version			
Add 'SS' at the end for Stainless Steel			

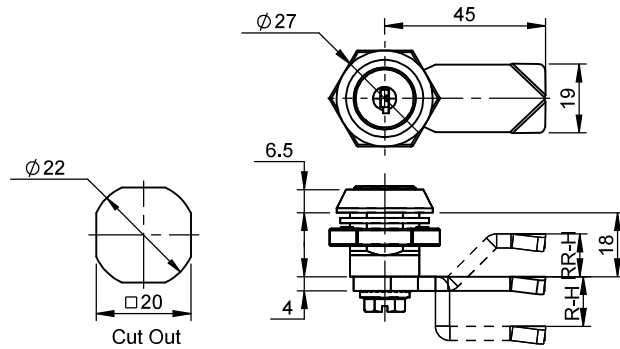
- II
- I
- II
- III
- IV
- V
- VI
- VII
- VIII
- IX
- X
- XI
- XII
- XIII
- XIV



# LOCKS

## Quarter Turn Lock

Polyamide, Zinc, MS



**D M L K 6 - MR**

Nut Material	Body Material	Cam Material
	Zinc / Polyamide	
Grip (R-H / RR-H) can be adjusted in 2 mm range		
Standard finish for Zinc is Chrome Plating		
Remove "M" from the Part Code for Polyamide version		

### Key

Brass



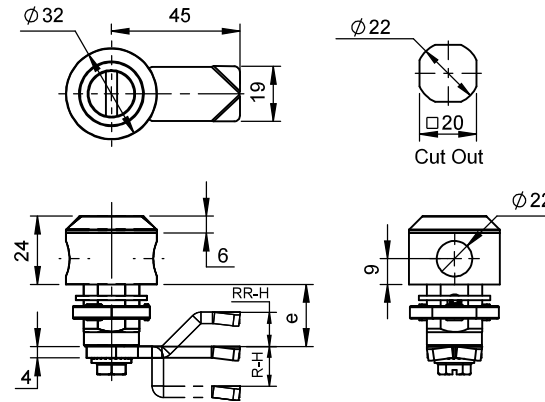
Product Code	Material	Finish	Type	Description
D-2233	Brass	Nickel	Press Fit	Unique Key
D-1333	Brass	Nickel	Press Fit	Unique Key
D-1333-CD	Brass	Nickel	Press Fit	Combination Key
D-1242	Brass	Nickel	-	Unique Key
D-1444	Brass	Nickel	Molded	Key
MK-1555	Brass	Nickel	Molded	Unique Key
D-1333-M	Brass	Nickel	Molded	Moulded Key
D-1333-M-CD	Brass	Nickel	Molded	Moulded Combination Key
DB-1333	Brass & Zinc	Nickel	Assembly	Handle Key
D-2233-M	Brass	Nickel	Molded	Moulded Key
DK-70	Brass	Nickel	Molded	Key

Keys to be Ordered Separately

Laser Marking available for CH finishing on minimum order

**Quarter Turn Pad Lock**

Zinc, Ms



**Y** Orientation  
**L** Left  
**R** Right

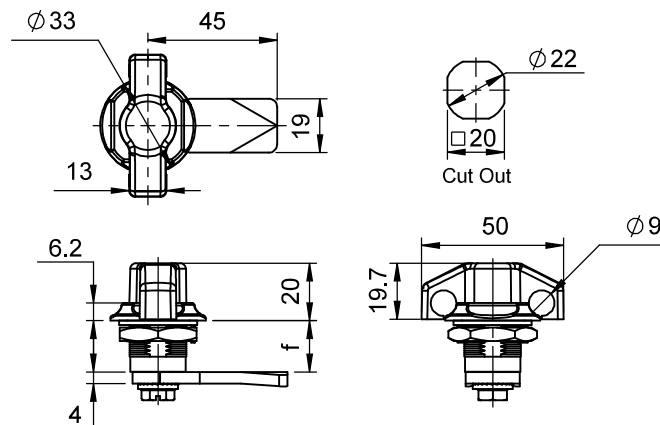
**D M A - SL4 - Y - MR**

<b>A</b>	Nut Material	Body Material	Body Finish	Inner Material	Inner Finish	Cam Material	Cam Finish	e
4	Zinc	Zinc	PC	Zinc	PC	MS	Blue Zinc	22
5								32
6								42

Grip (R-H / RR-H) can be adjusted in 2 mm range

**Wing Knob Pad Lock**

Zinc, MS



**D M W L A - L - MR**

<b>A</b>	Nut Material	Body Material	Body Finish	Inner Material	Inner Finish	Cam Material	Cam Finish	f
3	Zinc	Zinc	PC	Zinc	PC	MS	Blue Zinc	18
30								30

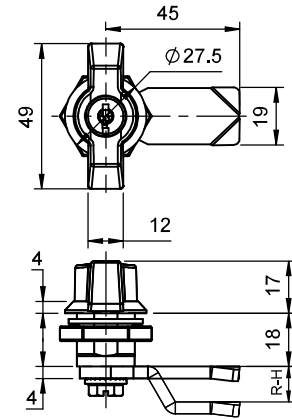
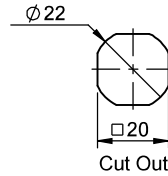
Grip (R-H / RR-H) can be adjusted in 2 mm range

- II
- I
- II
- III
- IV
- V
- VI
- VII
- VIII
- IX
- X
- XI
- XII
- XIII
- XIV

# LOCKS

## Wing Knob Lock

Zinc, Polyamide, MS



**D M A L K 7 - X - MR**

X		Nut Material	Body Material	Body Finish	Wing Knob Material	Wing Knob Finish	Cam Material	Cam Finish	Key
WL	WLM	Zinc	Zinc	PC	Polyamide	Zinc	PC	MS	D-2233
WL2	WL2M								D-1333

Grip (R-H / RR-H) can be adjusted in 2 mm range

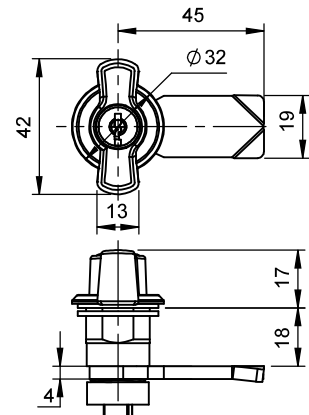
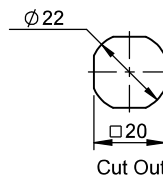
Remove "M" from the Part Code for Polyamide Body

For 60mm Body Height add "6" in place of "A"

Remove "K" from the Part Code for Non-Key Version

## Wing Knob Lock

Zinc, Polyamide, MS



**D M W L K 7 - WL1 - MR**

Nut Material		Body Material		Body Finish	Wing Knob Material	Cam Material	Cam Finish	Key
Polyamide	Zinc	Polyamide	Zinc	PC	Polyamide	MS	Blue Zinc	D-2233

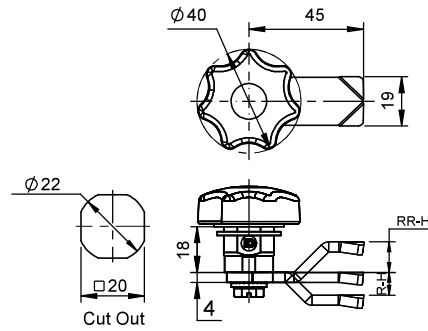
Grip (R-H / RR-H) can be adjusted in 2 mm range

Remove "M" from the Part Code for Polyamide Body

Remove "K" from the Part Code for Non-Key Version

## Wing Knob Lock

Zinc, Polyamide, MS

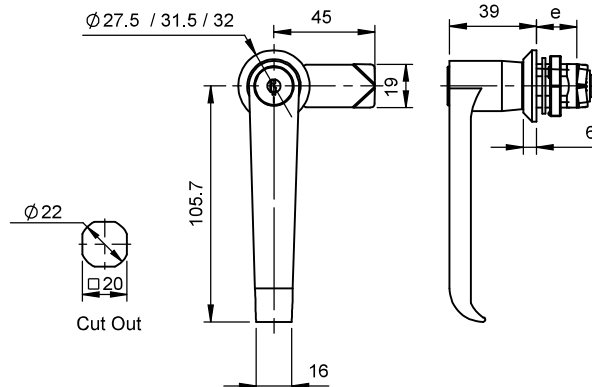


**D M L K 7 - K 40 - MR**

Nut Material	Body Material	Body Finish	Knob Material	Cam Material	Cam Finish	Key
Zinc	Zinc	CH	Polyamide	MS	Blue Zinc	D-2233
Grip (R-H / RR-H) can be adjusted in 2 mm range						
Replace "LK7" with "CL" from the Part Code for Non-Key Version						

## 'L' Handle Lock

Zinc, Polyamide, MS



- F** Finish
- PC** Black PC
- CH** Chrome Plated

**D M A L 1 M P - MR - F**

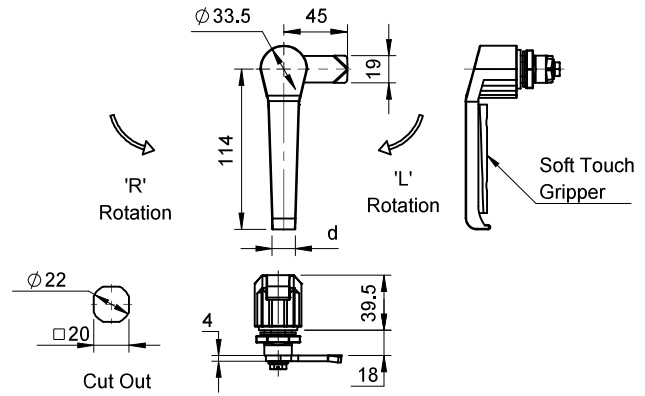
<b>A</b>				Nut Material	Body Material	Body Finish	Handle Material	Cam Material	Cam Finish	Key	e			
-	3	5	6	Zinc	Zinc	CH	Polyamide	MS	Blue Zinc	D-1333	18	30	50	60
Grip (R-H / RR-H) can be adjusted in 2 mm range														
Use "P" in the Part Code only for Non-Key Version														
Remove "M" from the Part Code for Polyamide Body														



# LOCKS

## Pad Lock 'L2' Handle

Zinc, MS



### F Finish

- PC** Black PC
- CH** Chrome Plated

### Y Orientation

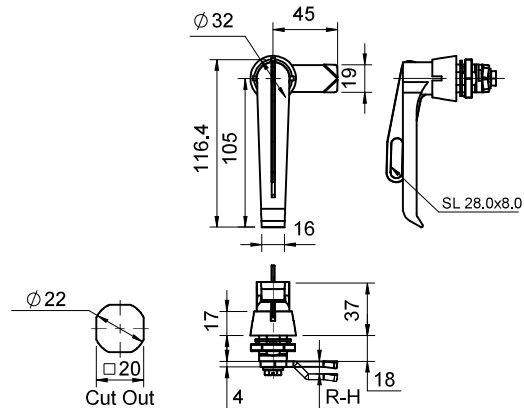
- L** Left
- R** Right

**D M L 2 - L - MR - Y - F**

Nut Material	Body Material	Handle Material	Cam Material	Cam Finish
	Zinc		MS	Blue Zinc
Grip (R-H / RR-H) can be adjusted in 2 mm range				
Use "L" in the Part Code only for Pad Lock Version				

## Pad Lock 'L3' Handle

Zinc, MS

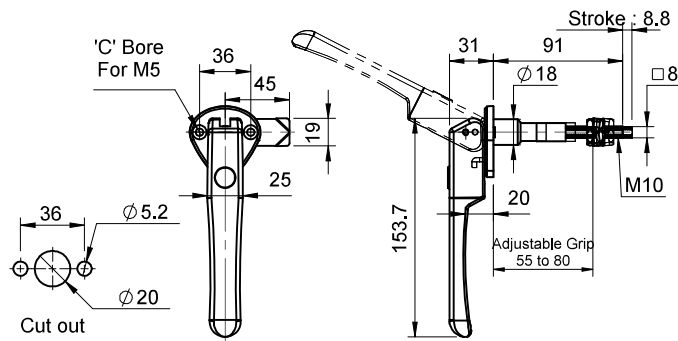


**D M L 3 - L - MR - PC**

Nut Material	Body Material	Handle Material	Cam Material	Cam Finish
	Zinc		MS	Blue Zinc
Grip (R-H / RR-H) can be adjusted in 2 mm range				

## Lift & Turn Compression Swing Handle 'L4'

Zinc, Polyamide, MS



### A Lock Type

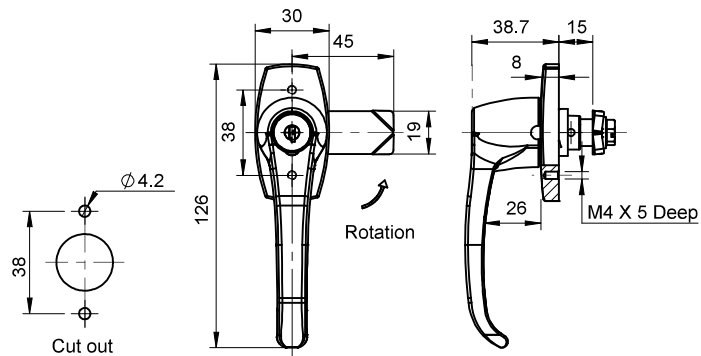
- 4S** Adj. with Stopper
- 4CO** Adj. Compression
- 35CO** Compression



Body Material	Handle Material	Stud Material	Cam Material	Cam Finish
Zinc	Polyamide	MS	MS	Blue Zinc
Grip (R-H / RR-H) can be adjusted in 2 mm range				
Use "P" in the Part Code only for Non-Key Version				
Use "PL" in the Part Code only for Pad Lock Version				

## Rotary 'L' Handle Lock

Zinc, MS



### F Finish

- PC** Black PC
- CH** Chrome Plated



### Y Orientation

- L** Left
- R** Right

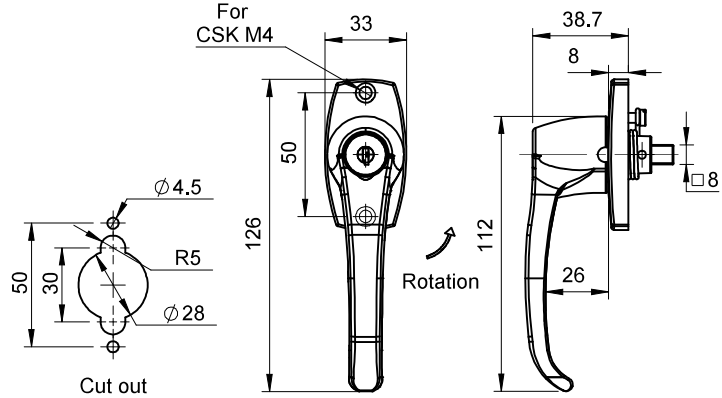
Base Material	Handle Material	Cam Material	Cam Finish
Zinc		MS	Blue Zinc
Grip (R-H / RR-H) can be adjusted in 2 mm range			
Use "K" in the Part Code only for Key Version			



# LOCKS

## Rotary 'L' Handle Lock

Zinc, MS



### F Finish

- PC** Black PC
- CH** Chrome Plated

### Y Orientation

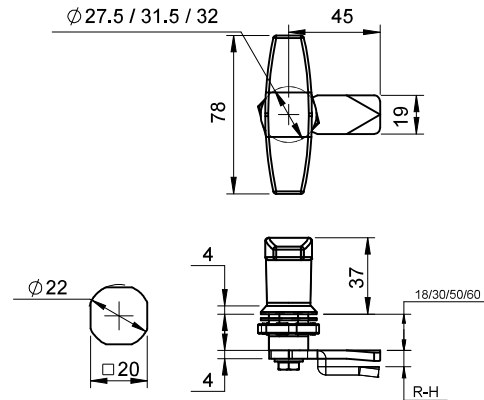
- L** Left
- R** Right

**D M L 5 - KLS - Y - F**

Base Material	Handle Material	Cam Material	Cam Finish
Zinc		MS	Blue Zinc

## 'T' Handle Lock

Zinc, Polyamide, MS



### F Finish

- PC** Black PC
- CH** Chrome Plated

**D M A T 7 M P - MR - F**

A	Nut Material	Body Material	Body Finish	Handle Material	Cam Material	Cam Finish	Key	e
- 3 5 6	Zinc	Zinc	CH	Polyamide	MS	Blue Zinc	D-1333	18 30 50 60

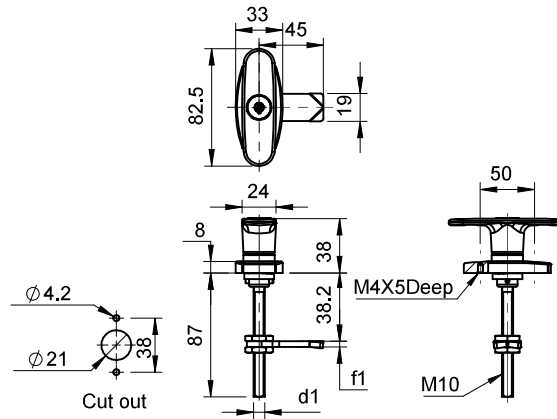
Grip (R-H / RR-H) can be adjusted in 2 mm range

Use "P" in the Part Code only for Non-Key Version

Remove "M" from the Part Code for Polyamide Body

**Rotary 'T' Handle Lock**

Zinc, MS



**F** Finish

- PC** Black PC
- CH** Chrome Plated

**Y** Orientation

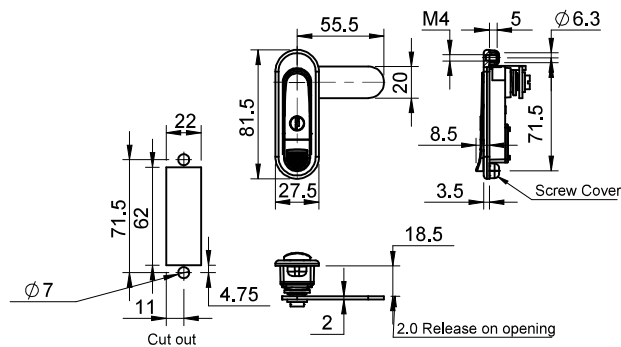
- L** Left
- R** Right

**D M T 5 - Y - F**

Base Material	Handle Material	Cam Material	Cam Finish
Zinc	Zinc	MS	Blue Zinc
Grip (R-H / RR-H) can be adjusted in 2 mm range			

**Compression Swing Handle**

Zinc, MS



**D 8 C S L - M1R - CH**

Base Material	Handle Material	Cam Material	Cam Finish
Zinc	Zinc	MS	Blue Zinc
Grip (R-H / RR-H) can be adjusted in 2 mm range			
Use "L" in the Part Code only for Key Version			

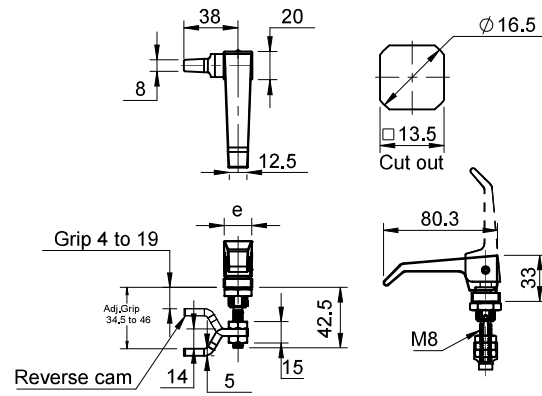




# LOCKS

## Lift & Turn Compression Swing Handle

Zinc, MS

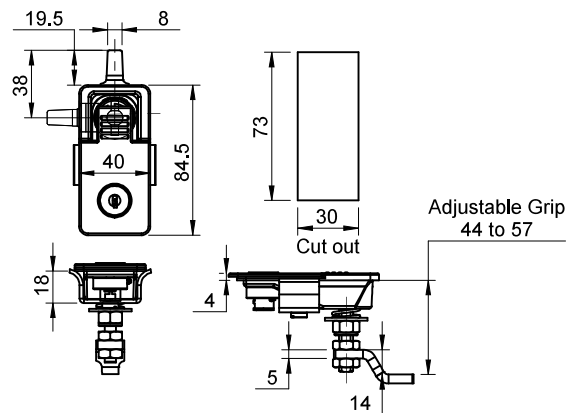


**D M L T - 805 - 10 - AG5 PC**

Base Material	Handle Material	Cam Material	Cam Finish
Zinc	Zinc	MS	Blue Zinc
Grip (R-H / RR-H) can be adjusted in 2 mm range			

## Lift & Turn Compression Swing Handle

Zinc, MS

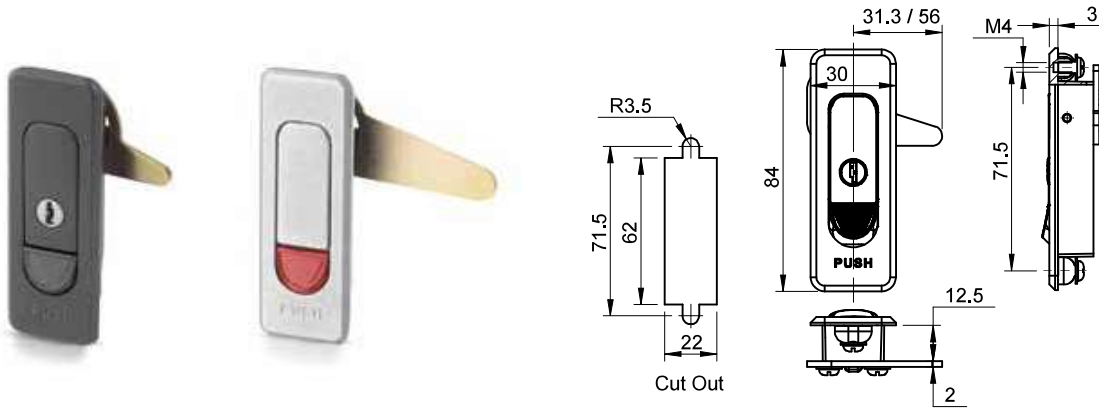


**D 10 SL - AG5V - PC**

Base Material	Handle Material	Cam Material	Cam Finish
Zinc	Zinc	MS	Blue Zinc
Grip (R-H / RR-H) can be adjusted in 2 mm range			

**Push Lock-DM11**

Zinc, MS



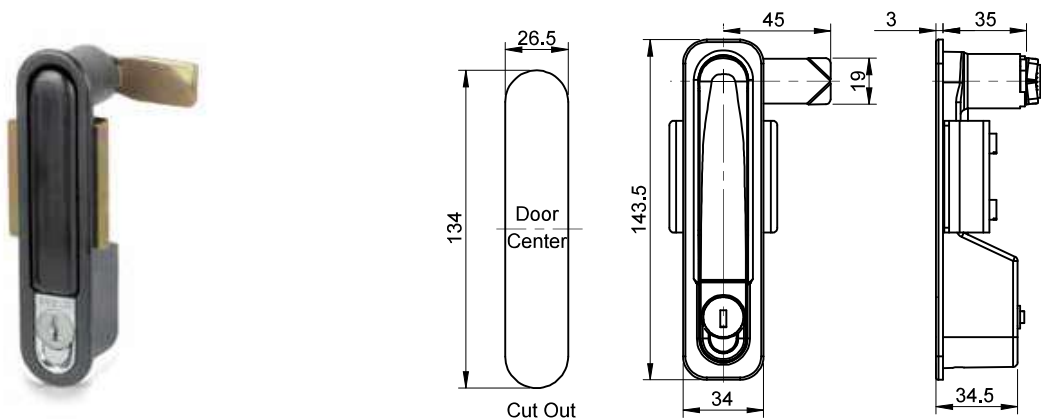
- F** Finish
- PC** Black PC
- SPC** Chrome Plated

**D M 11 SL - 56 - F**

Base Material	Handle Material	Cam Material	Cam Finish
Zinc	Zinc	MS	Blue Zinc
Remove "SL" from the Part Code for Non-Key version			
Std. : Cam Length is 31.3mm, use "56" in the Part Code only for Cam of 56mm			

**Swing Handle-D14SL**

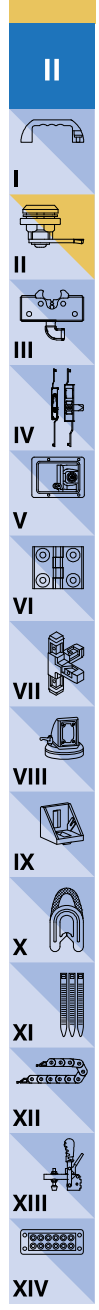
Zinc, MS



- Y** Orientation
- L** Left
- R** Right

**D 14 SL - MR - Y - PC**

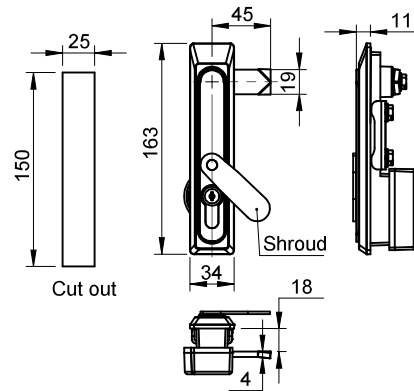
Base Material	Handle Material	Cam Material	Cam Finish
Zinc	Zinc	MS	Blue Zinc
Grip (R-H / RR-H) can be adjusted in 2 mm range			



# LOCKS

## Swing Handle-D15S

SS-304



**Y** Orientation

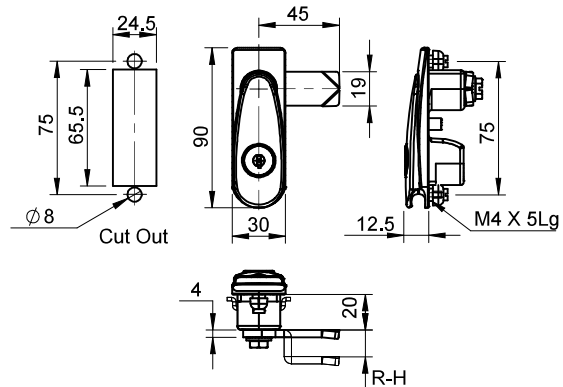
- L** Left
- R** Right

**D 15 S C Y 1 - SH - SS - SR - Y**

Base Material	Handle Material	Cam Material	Cam Finish
	SS-304		EP
Grip (R-H / RR-H) can be adjusted in 2 mm range			
For "SS-316L" add "SS-316L" after "SS" in the Part Code			

## Swing Handle-D18SL

Polyamide, MS



**Y** Orientation

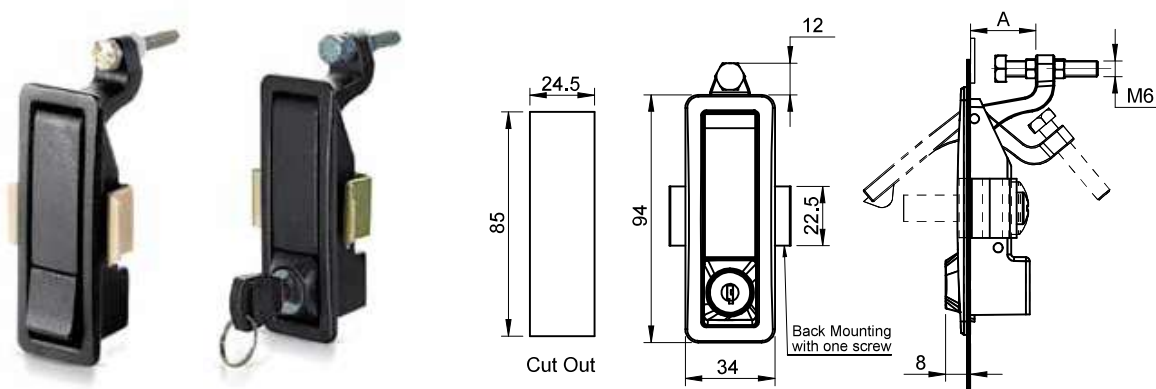
- L** Left
- R** Right

**D 18 SL - MR - Y**

Base Material	Handle Material	Cam Material	Cam Finish
	Polyamide	MS	Blue Zinc
Grip (R-H / RR-H) can be adjusted in 2 mm range			

**Push Lock-DM20**

Zinc, MS



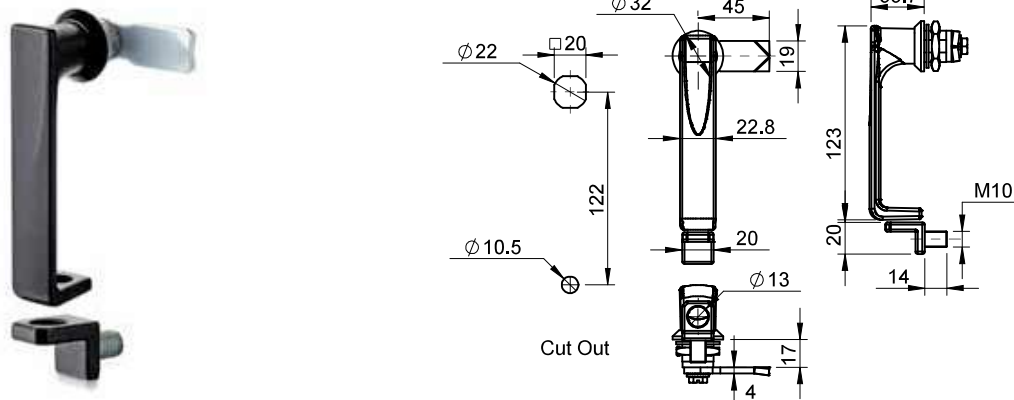
**A** Lever Dist.  
25  
50

**D M 20 SL - P - B A - PC**

Base Material	Handle Material	Lever Material	Push Material
Zinc			
Std. Part Code is without Key, add "SL" only for Key version			

**Pad Lock Handle-DM25**

Zinc, MS



**D M 25 - L - MR - PC**

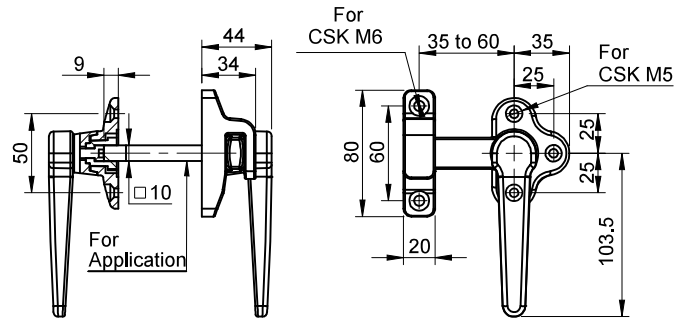
Base Material	Handle Material	Cam Material	Cam Finish
Zinc		MS	Blue Zinc
Grip (R-H / RR-H) can be adjusted in 2 mm range			

- II
- I
- II
- III
- IV
- V
- VI
- VII
- VIII
- IX
- X
- XI
- XII
- XIII
- XIV

# LOCKS

## Airtight Handle

Zinc



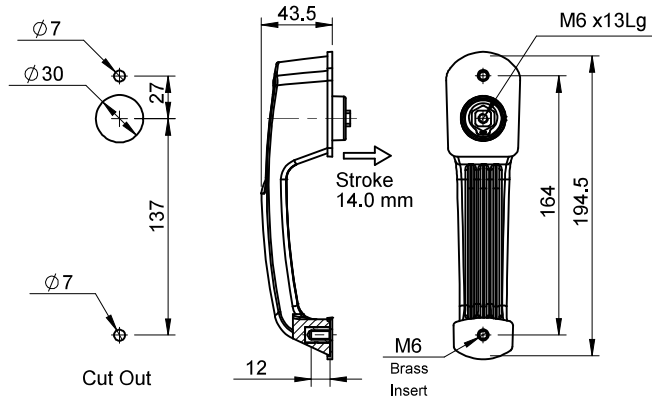
**Y** Orientation  
**L** Left  
**R** Right

**D M L U 28 - Y - SPC**

Base Material	Handle Material	Stud Material	Cam Finish
Zinc	Zinc	MS	Blue Zinc
Std. Part Code is Single handle and catcher, add "U" in the part code only for Dual Handle			

## Actuator Handle

Polyamide

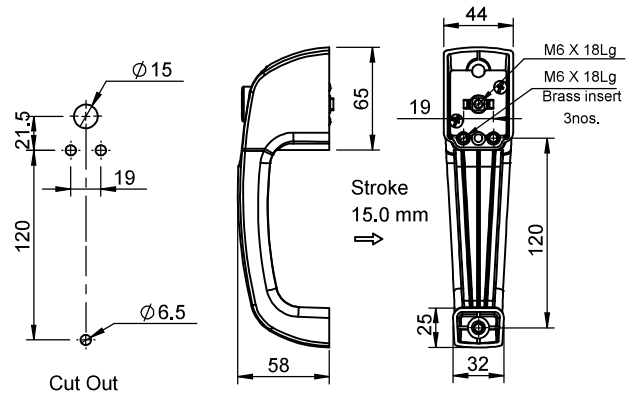


**D P L - 30**

Handle Material	Gasket Material
Polyamide	Rubber
Combination Keys available from "1-100"	
Key can be matched with ignition Keys encouraging "Green Key" concept	

## Actuator Handle

Polyamide

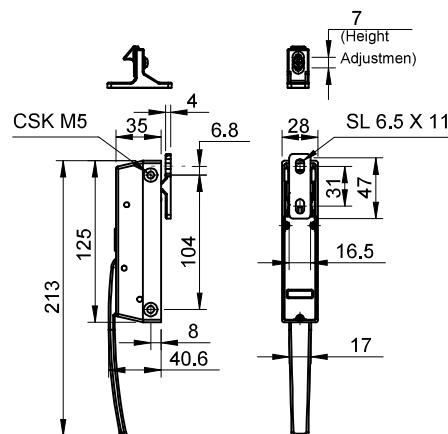


**D P L - 49**

Handle Material	Gasket Material
Polyamide	Rubber
Combination Keys available from "1-100"	
Key can be matched with ignition Keys encouraging "Green Key" concept.	

## Refrigeration Lock

Zinc



**D M 34 L**

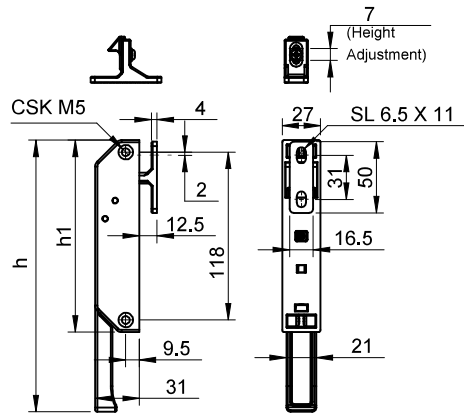
Base Material	Base Finish	Handle Material	Handle Finish	Catcher Material	Catcher Finish
Zinc	SPC	Zinc	Black PC	Zinc	Black PC

# LOCKS

## Refrigeration Lock

Zinc

- II
- I
- II
- III
- IV
- V
- VI
- VII
- VIII
- IX
- X
- XI
- XII
- XIII
- XIV

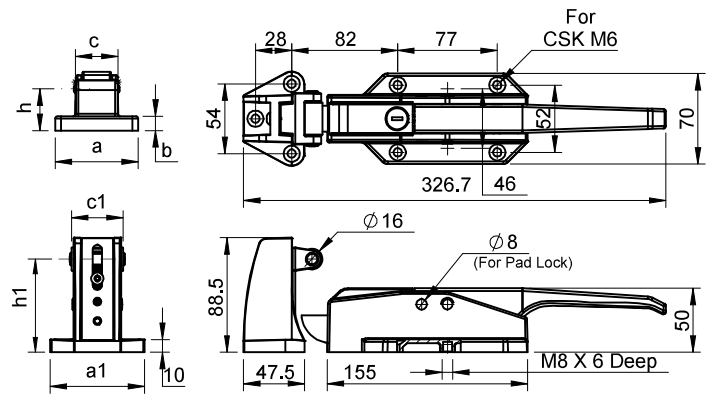


**D M 37 L**

Base Material	Base Finish	Handle Material	Handle Finish	Catcher Material	Catcher Finish
Zinc	SPC	Zinc	Black PC	Zinc	Black PC

## Refrigeration Lock

Zinc



**D M 38 C L**

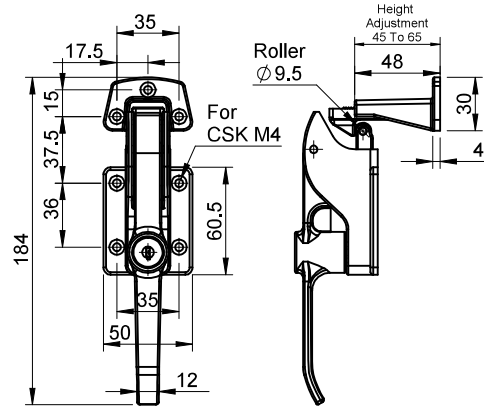
Base Material	Handle Material	Catcher Material	Base Finish	Handle Finish	Catcher Finish	a	a1	h	h1	c	c1
Zinc			SPC			70	73	35	72 to 98	35	40

Part Code for Emergency Release : **DLR**

Two catcher styles are available, refer the table

**Refrigeration Lock**

Zinc

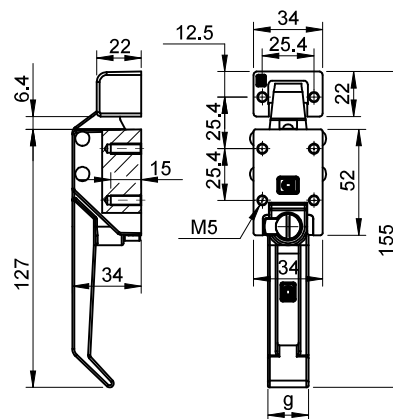


**D M 41 L**

Base Material	Handle Material	Catcher Material	Base Finish	Handle Finish	Catcher Finish
	Zinc			SPC	

**Refrigeration Lock**

Zinc



**D M 42**

Base Material	Handle Material	Catcher Material	Base Finish	Handle Finish	Catcher Finish
	Zinc			SPC	

For Key Version of the lock add "L" at the end of the part code

For Closed version of catcher add "CL" at the end of the part code

- II
- I
- II
- III
- IV
- V
- VI
- VII
- VIII
- IX
- X
- XI
- XII
- XIII
- XIV