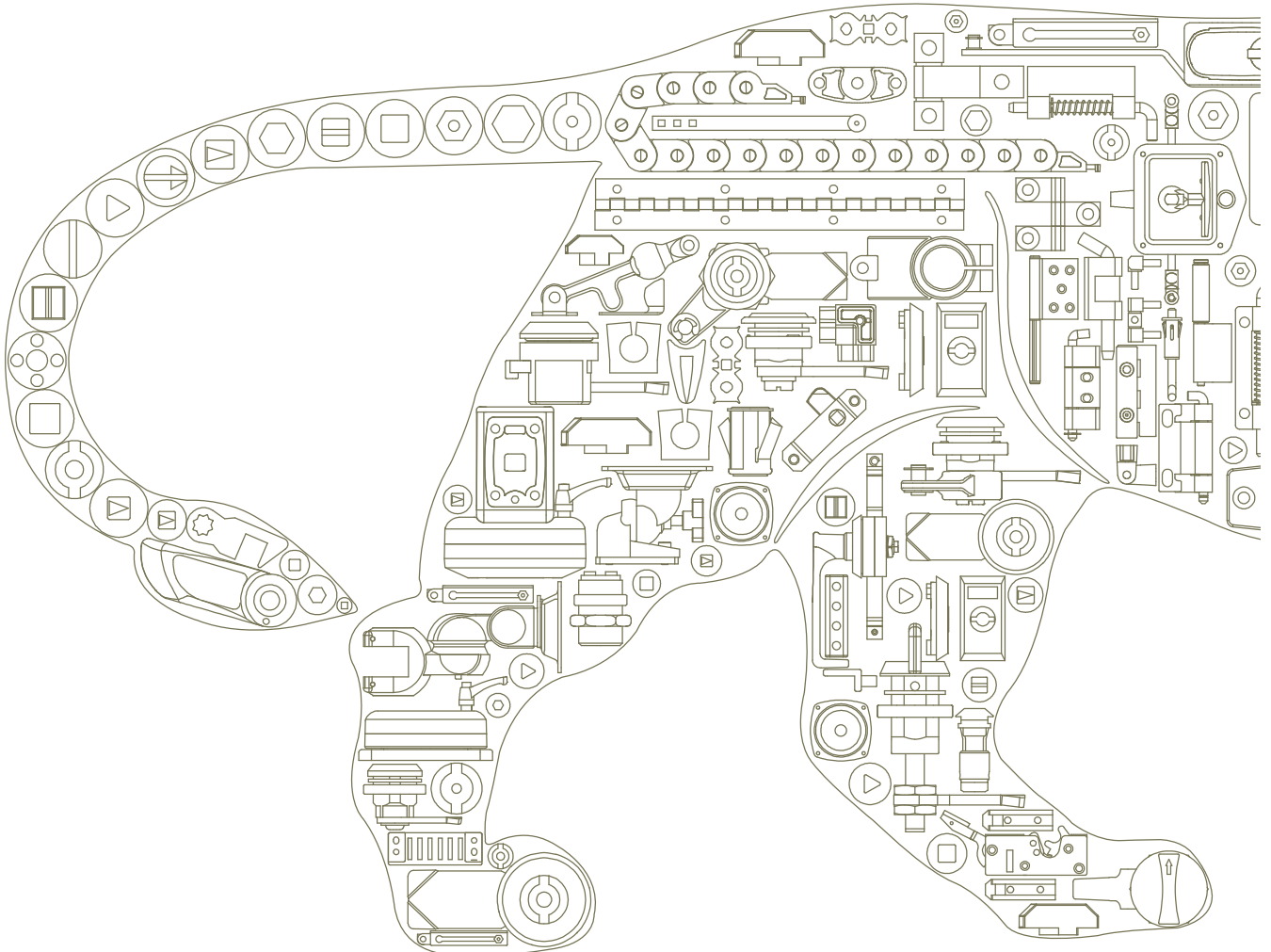


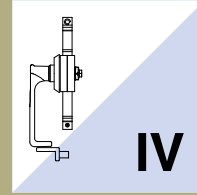
Part Code Index

Product Name	Material	Page
Mounting Plate	Polyamide, Zinc, SS-304	148
	Polyamide, Zinc, SS-304	149
	SS-304	150
		151
3 Point Locks		
Twisted Rod Lock Assembly		152
Multiple Pin Lock System		153
Swing Handle System - Flat Rods		154
		155
3 Point Lock Accessories	Polyamide, Zinc	156
	MS, Polyamide	157
Swing Handle System - Round Rods		158
		159
3 Point Lock Accessories	MS, Polyamide	160
		161
Swing Handle - D14	Zinc	162
Swing Handle - DM27		

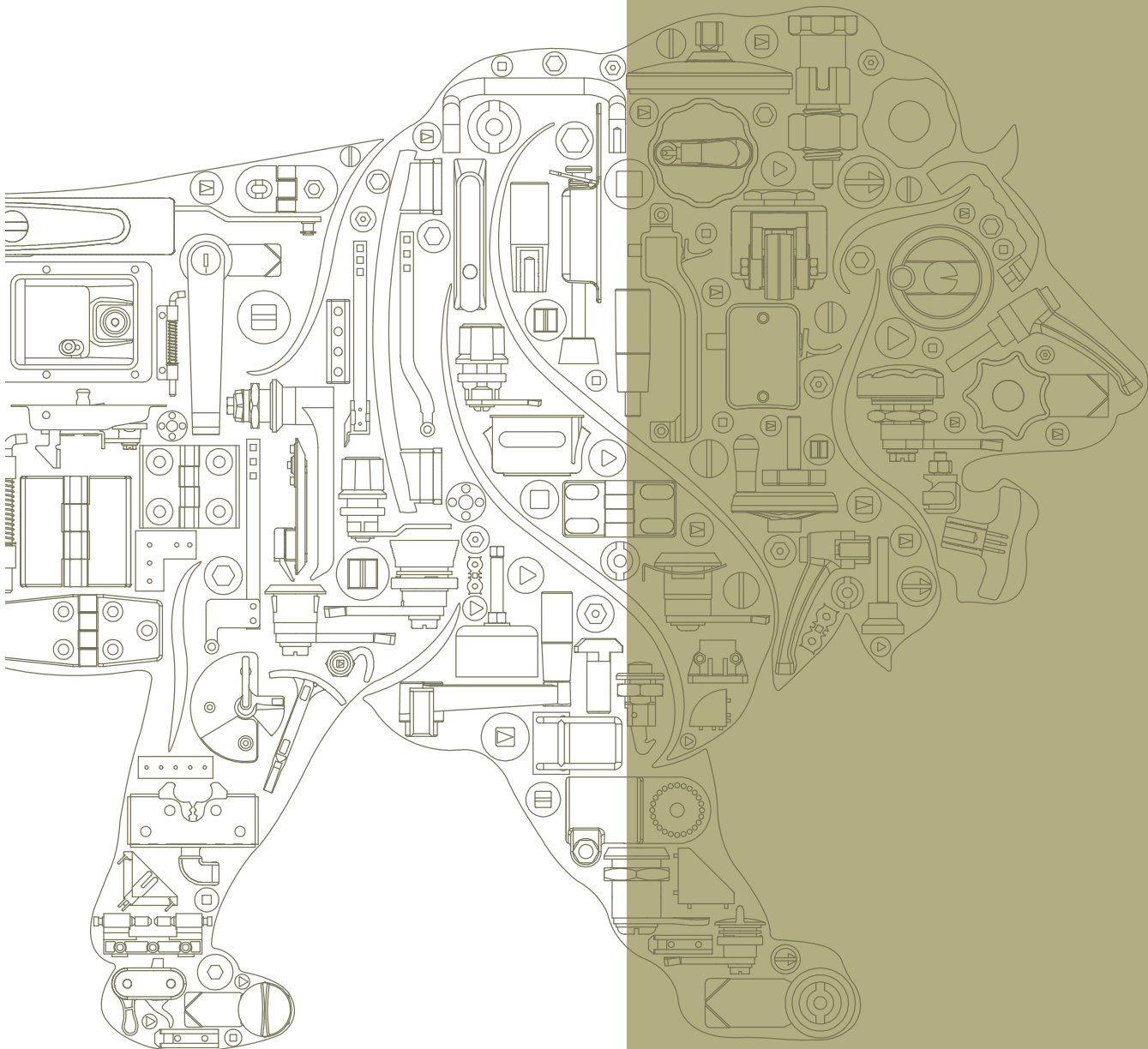
Product Name	Material	Page
Swing Handle - D15	SS-304	163
Swing Handle - D14		
Swing Handle - D18	Polyamide	164
Swing Handle - D19		
Swing Handle - D21		
Swing Handle - DM25	Zinc	165
Swing Handle - DM24		
Accessories	Polyamide, MS, Zinc	166
Double Door System		167
		168
Swing Handle - DM27	Zinc	169
Symmetrical Compact Lock Accessories	MS	170
Symmetrical Compact Lock		171
	MS	172
2 Way Slam Lock	Zinc, MS, SS-304	173
Rack & Pinion - DMRPU	Zinc	174



Product Name	Material	Page
Rack & Pinion - DMRPU	MS, Zinc	175
Symmetrical Pad Lock		176
Furniture Lock	Zinc	177
	Polyamide	178
	Polyamide, Zinc	179



MULTI-POINT LOCKS



Made in India  Made for You

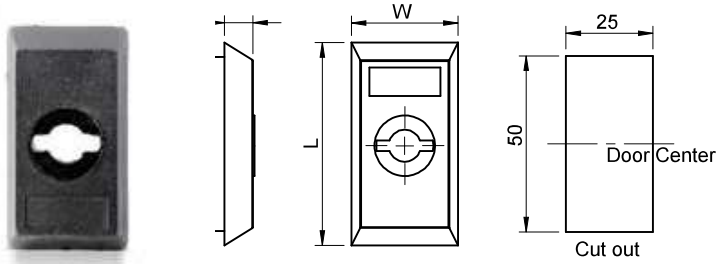
MULTI-POINT LOCKS

Mounting Plate

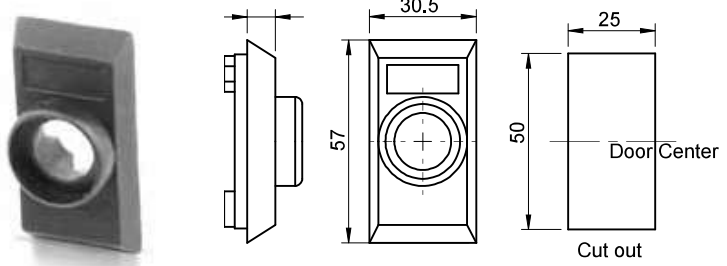
Polyamide, Zinc, SS-304

Mounting Plate	L	W	T
D1P	56.5	30	8
D1M	58	32	8
D1SS	60	35	9

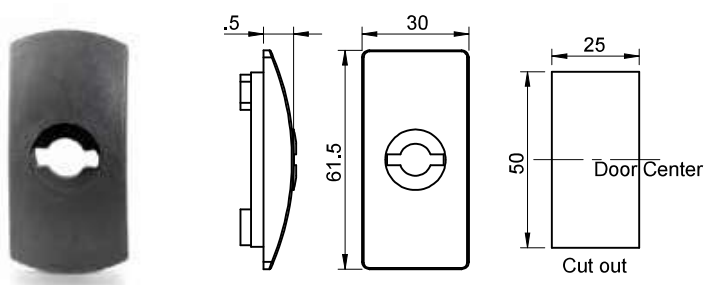
- IV
- I
- II
- III
- IV
- V
- VI
- VII
- VIII
- IX
- X
- XI
- XII
- XIII
- XIV



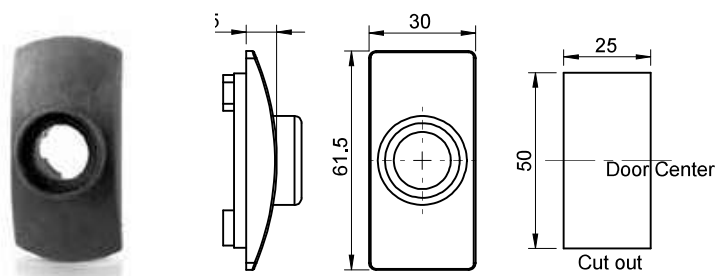
D1P



D6P



D11P



D16P



D1R1K-Z

D6R1L1-Z



D6R1TM7P-Z1-CH

D6R5WLM-Z



D1M-QBC-CH

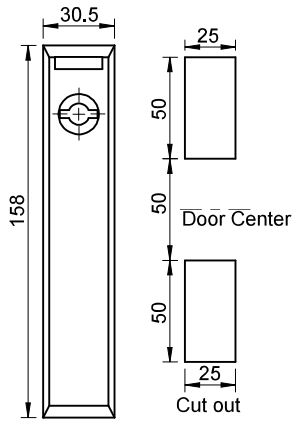
DB5

D 1 P

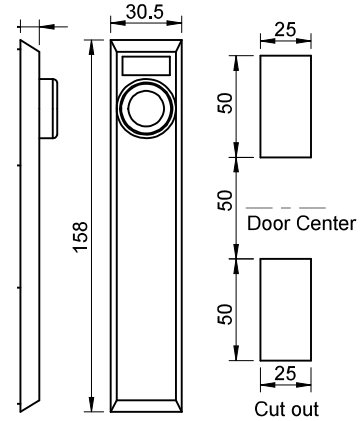
MULTI-POINT LOCKS

Mounting Plate

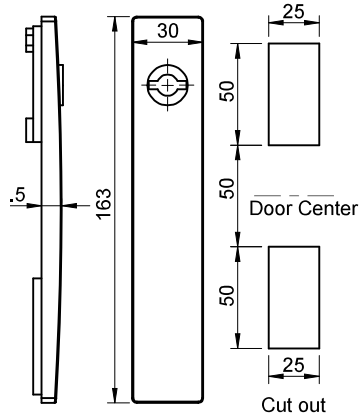
Polyamide, Zinc, SS-304



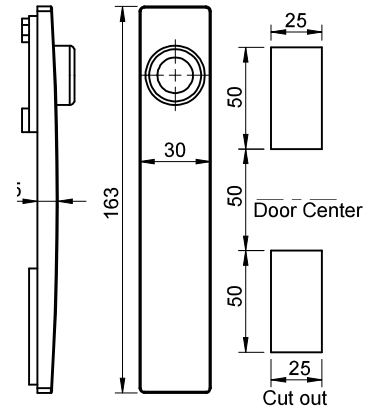
D2P



D7P



D12P



D17P



D7R3WL2-Z1



D12R3K-Z



D17R3L1MP-Z-PC



D17R3WML2P-Z-CH

Mounting Plate	R&P option		
	D1RPL	D3RPL	D5RPL
D1P			
D1M	✓		✓
D1SS			
D2P		✓	
D6P	✓		✓
D7P		✓	
D11P	✓		✓
D12P			
D16P	✓	✓	✓
D17P			

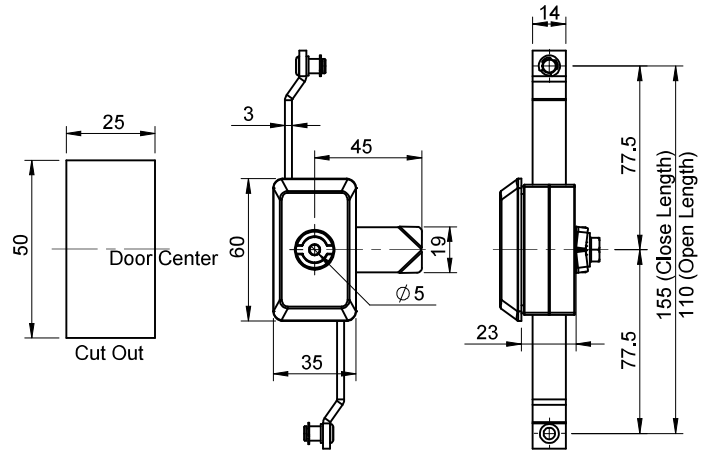
- IV
- I
- II
- III
- IV
- V
- VI
- VII
- VIII
- IX
- X
- XI
- XII
- XIII
- XIV

MULTI-POINT LOCKS

Mounting Plate

SS-304

- IV
- I
- II
- III
- IV
- V
- VI
- VII
- VIII
- IX
- X
- XI
- XII
- XIII
- XIV

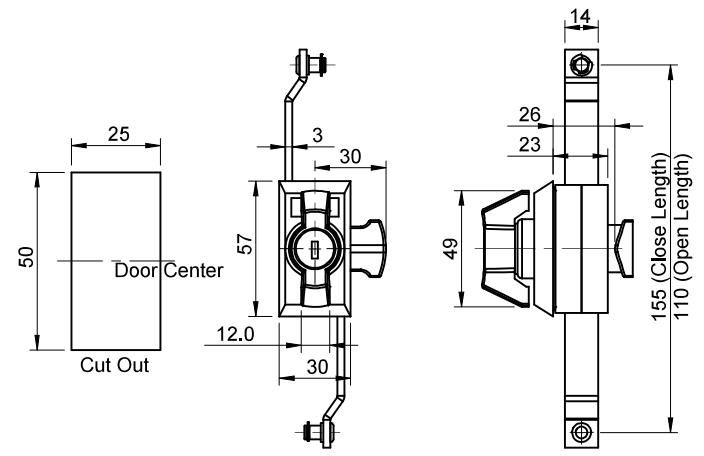


D 1 L M R 5 K SS 5 - SR

Part Code	Material	Finish	Description
D1MR5KSS-SQ-SR	SS304	EP	Mounting Plate
D1MR5KSS-5-SR			

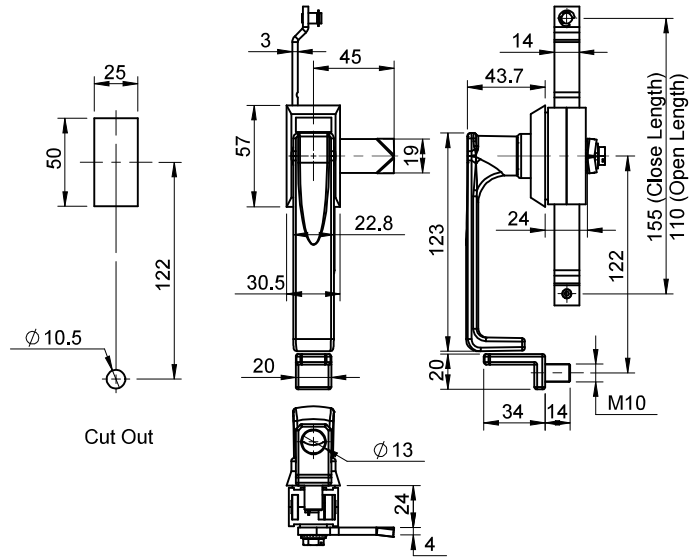
Mounting Plate

SS-304



D 6 M R 5 W L 2 SS - Z

Part Code	Material	Finish	Description
D6MR5WL2SS-Z	SS304	EP	Mounting Plate
D6MR5WL2SS			



D 6 2 5 R 5 B - L - MR - PC

Part Code	Material	Finish	Description
D625R5B-L-MR-PC	Zinc	Black PC	Rack & Pinion : D5RBPL (Stay put movement)
D1MR5KSS-5-SR			

3 Point Locks



D3R3SHL

D3R3CY1

D3RR3SLG-MR4

D3RR3SL-L-MR7

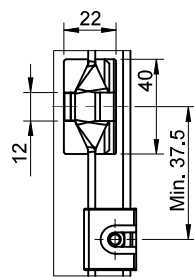
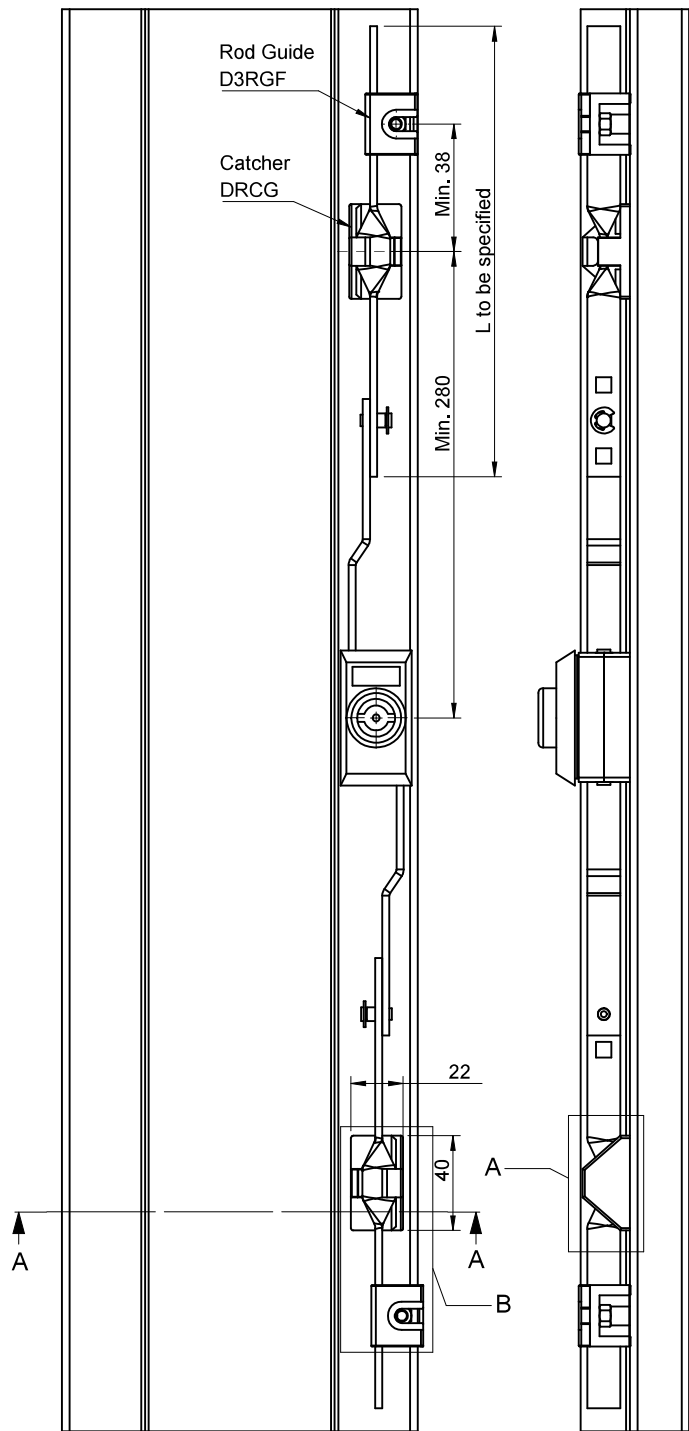
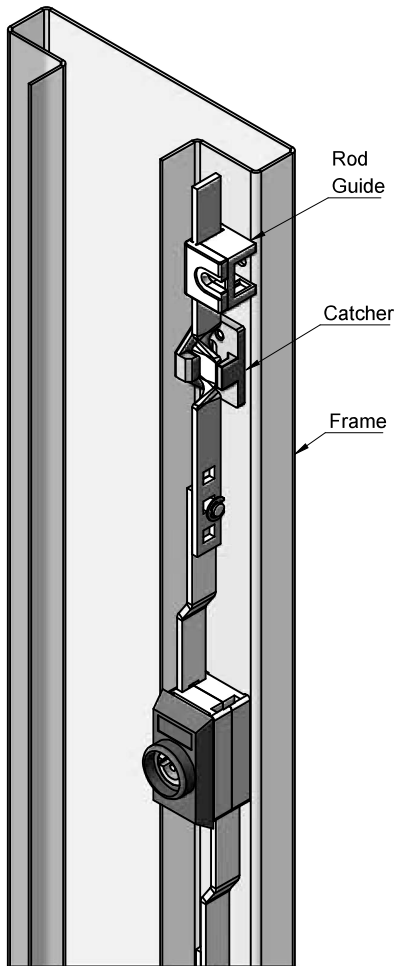
D3R3C5-MR



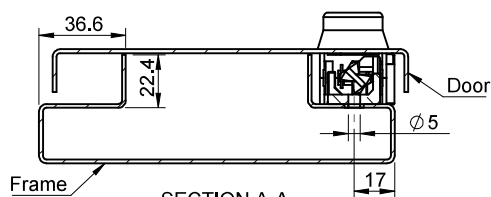
MULTI-POINT LOCKS

Twisted Rod Lock Assembly

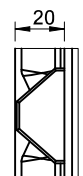
- IV
- I
- II
- III
- IV
- V
- VI
- VII
- VIII
- IX
- X
- XI
- XII
- XIII
- XIV



VIEW-B



SECTION A-A

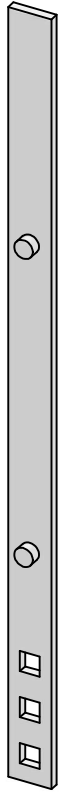


VIEW-A

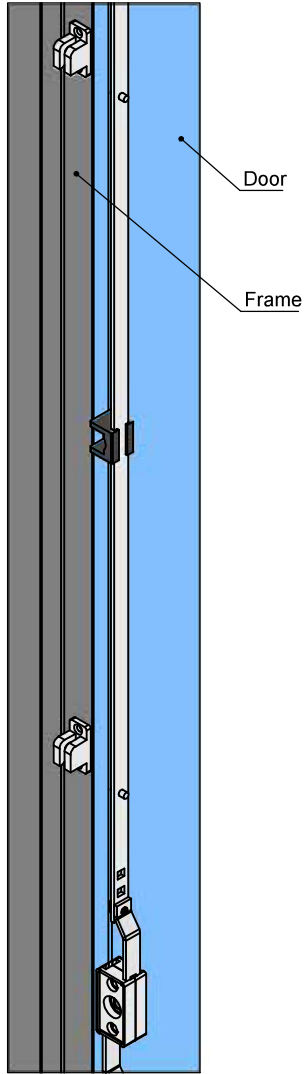
Application View

D6R5K-L

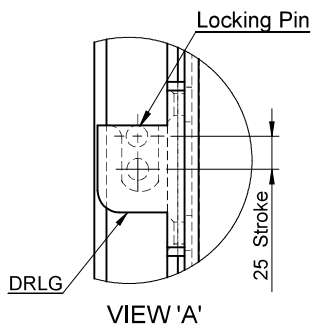
Multiple Pin Lock System



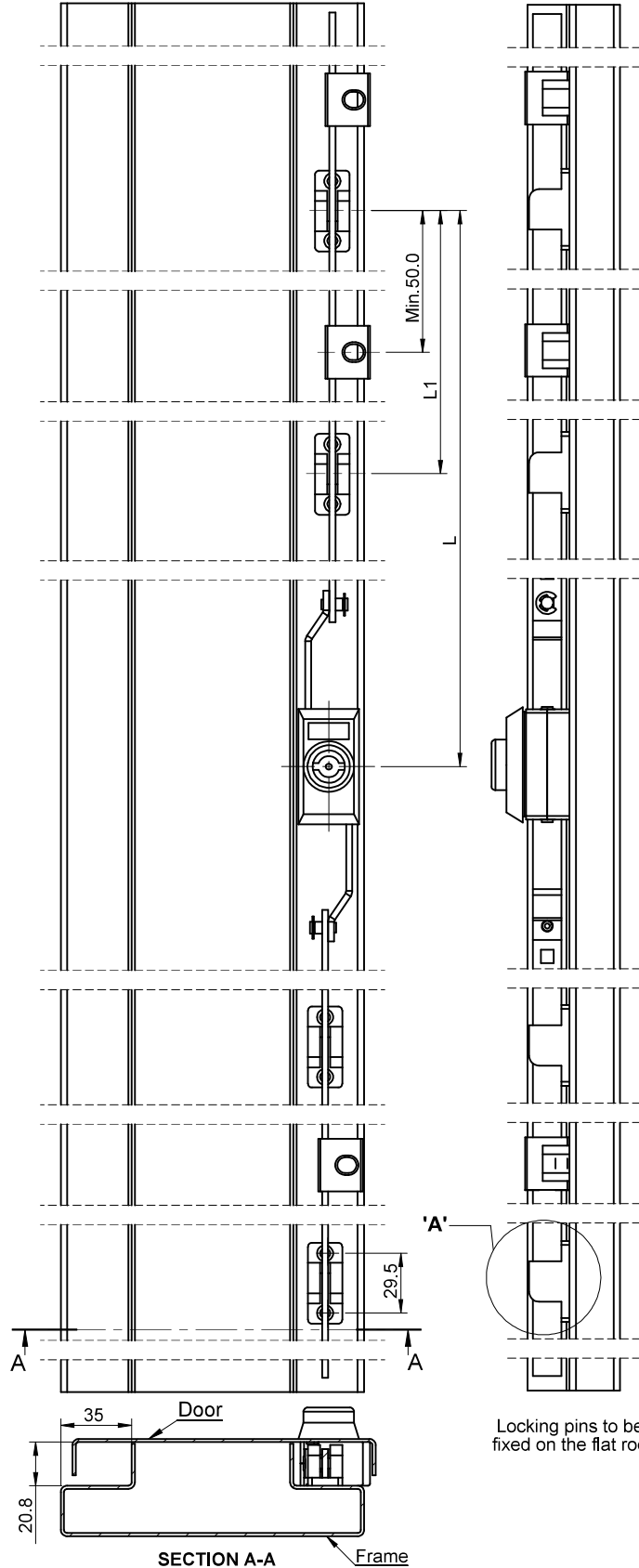
D3RLP-858
with Pin



Application View



VIEW 'A'



Locking pins to be fixed on the flat rod

- IV
- I
- II
- III
- IV
- V
- VI
- VII
- VIII
- IX
- X
- XI
- XII
- XIII
- XIV

Application View
D3RL-P-858-N

MULTI-POINT LOCKS

Swing Handle System - Flat Rods

- IV
- I
- II
- III
- IV
- V
- VI
- VII
- VIII
- IX
- X
- XI
- XII
- XIII
- XIV



D3SP



D3SSLG



D3SP-L



D3SML-CH



D3SHL



D3SL-CY1



D3SHL-CY2



D3SML-CY2T



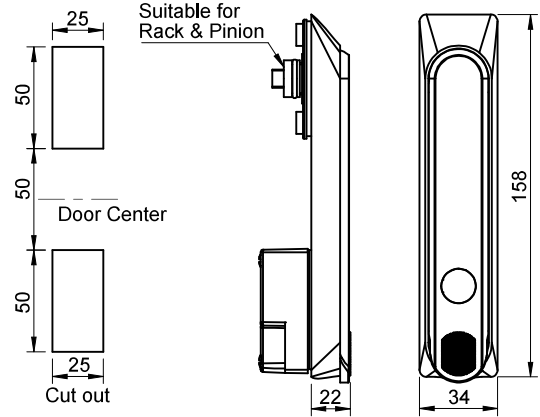
D3C5



D3SL

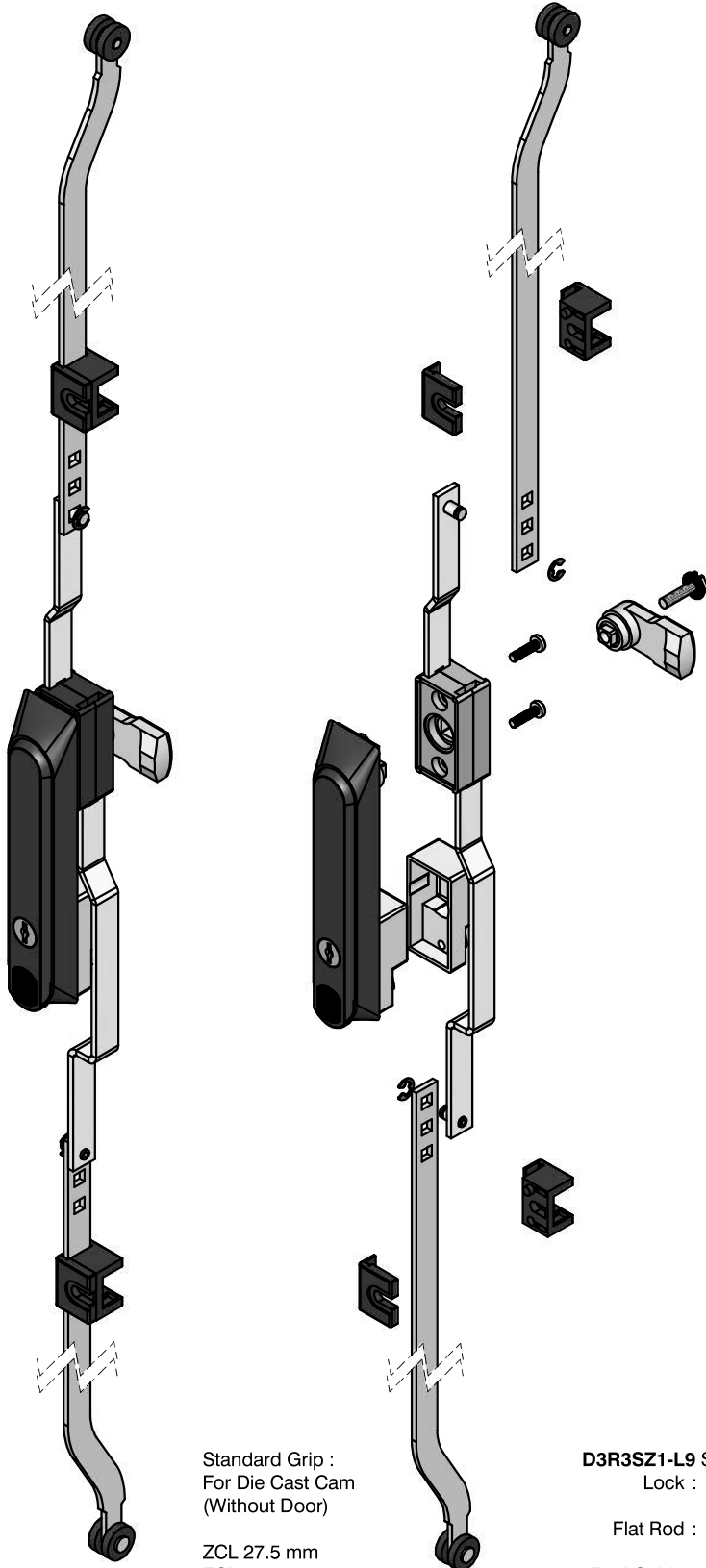


D3SLG



Part Code	Material	Type	Key
D3SP	Polyamide	With Plug	-
D3SSLG		With Shutter & Acrylic Branding Plate	D-1333
D3SP-L		With Pad Lock	-
D3SML-CH	Polyamide & Zinc	Die Cast Handle	D-1333
D3SHL	Polyamide	With Shroud	
D3SL-CY1		With Profile Cylinder	
D3SHL-CY2	Polyamide	With Profile Cylinder & With Insert	DB5K
D3SML-CY2T	Polyamide & Zinc	With Profile Cylinder & With 'T' Insert	
D3C5	Polyamide	With Insert	D-1333
D3SL		With Key	
D3SLG		With Acrylic Branding Plate	

Swing Handle System - Flat Rods

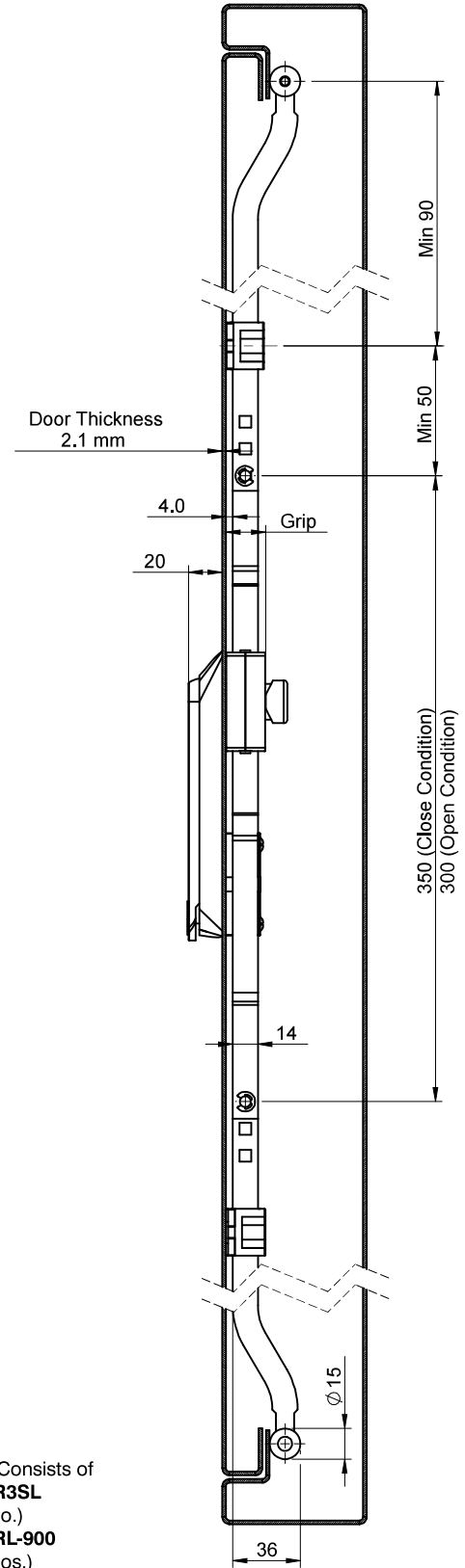


Standard Grip :
For Die Cast Cam
(Without Door)

ZCL 27.5 mm
ZCL1 22 mm

Other grips can be
obtained with MR-H.
IP 65

D3R3SZ1-L9 Set Consists of
Lock : **D3R3SL**
(1 no.)
Flat Rod : **D3RL-900**
(2 nos.)
Rod Guide : **D3RGF**
(4 nos.)
Cam : **ZCL1**
(1 nos.)



IV	
I	
II	
III	
IV	
V	
VI	
VII	
VIII	
IX	
X	
XI	
XII	
XIII	
XIV	

MULTI-POINT LOCKS

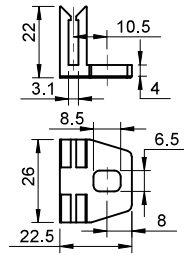
3 Point Lock Accessories

Polyamide, Zinc

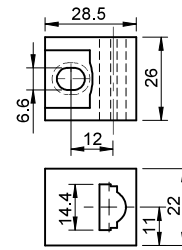
- IV
- I
- II
- III
- IV
- V
- VI
- VII
- VIII
- IX
- X
- XI
- XII
- XIII
- XIV



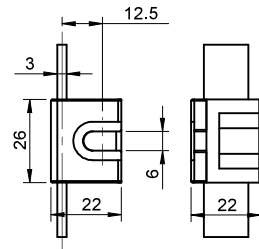
D3RGF2



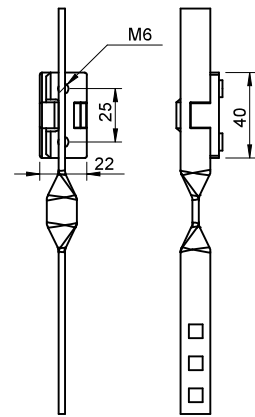
D34RG



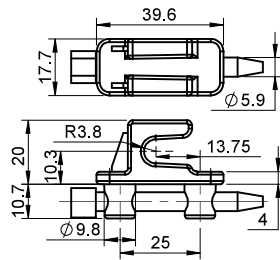
D3RGF



DRCG



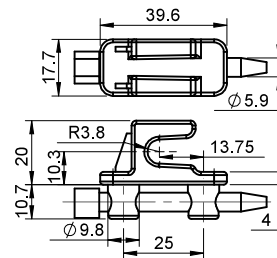
DRLG1P



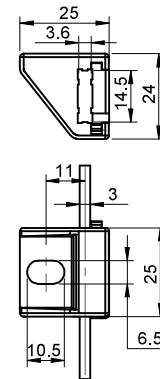
DRCGP



DRLG1



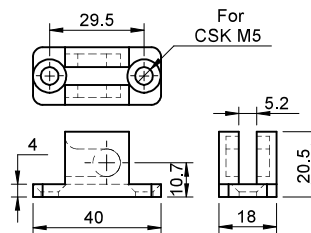
D3RGFC5



DRLG



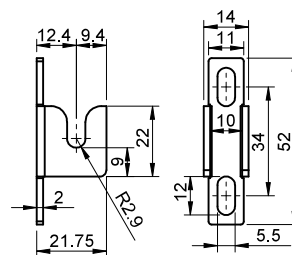
DRLG Pin



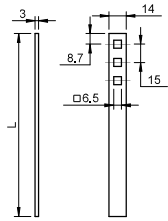
DMRLG1



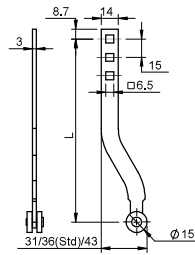
DMRLG1 Pin



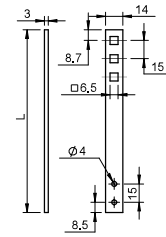
IV



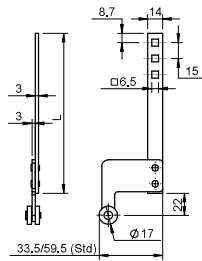
D3RL-A-L



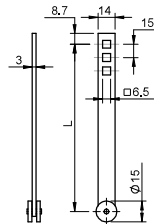
D3RL-L



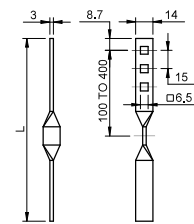
D3RL-AH-L



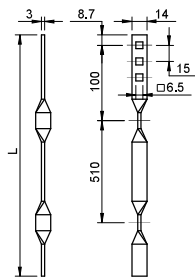
D3RL-AH-L With DROA-59.5



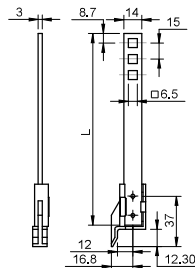
D3RL-AR-L



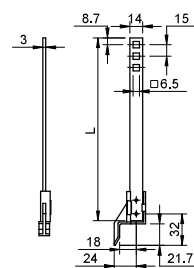
D3RL-ST-L



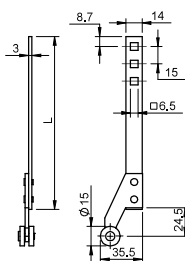
D3RL-T-L



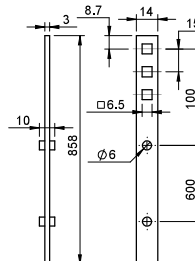
D3RL-FRE-1213



D3RL-FRE-1823



D3RL-A-L With D5C



D3RL-P-858



MULTI-POINT LOCKS

Swing Handle System - Round Rods

- IV
- I
- II
- III
- IV
- V
- VI
- VII
- VIII
- IX
- X
- XI
- XII
- XIII
- XIV



D4SP



D4SSLG



D4SP-L



D4SML-CH



D4SHL



D4SL-CY1



D4SHL-CY2



D4SML-CY2T



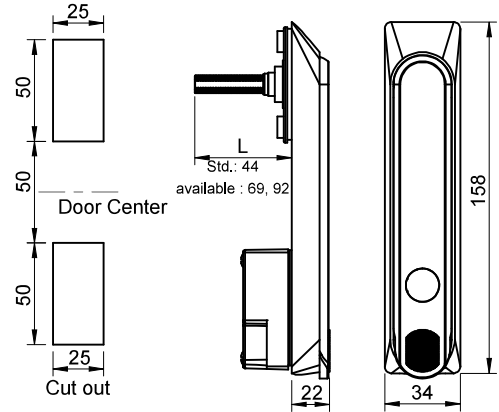
D4C5



D4SL

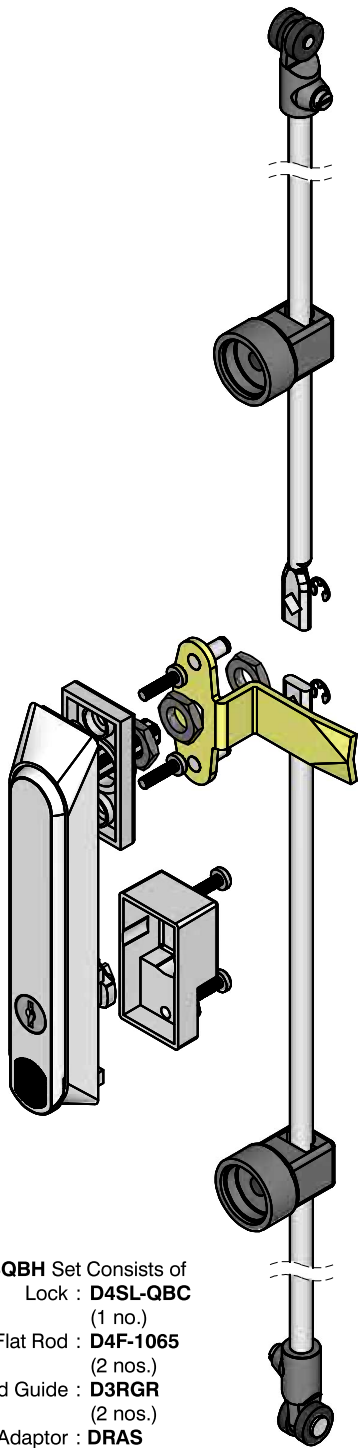


D4SLG

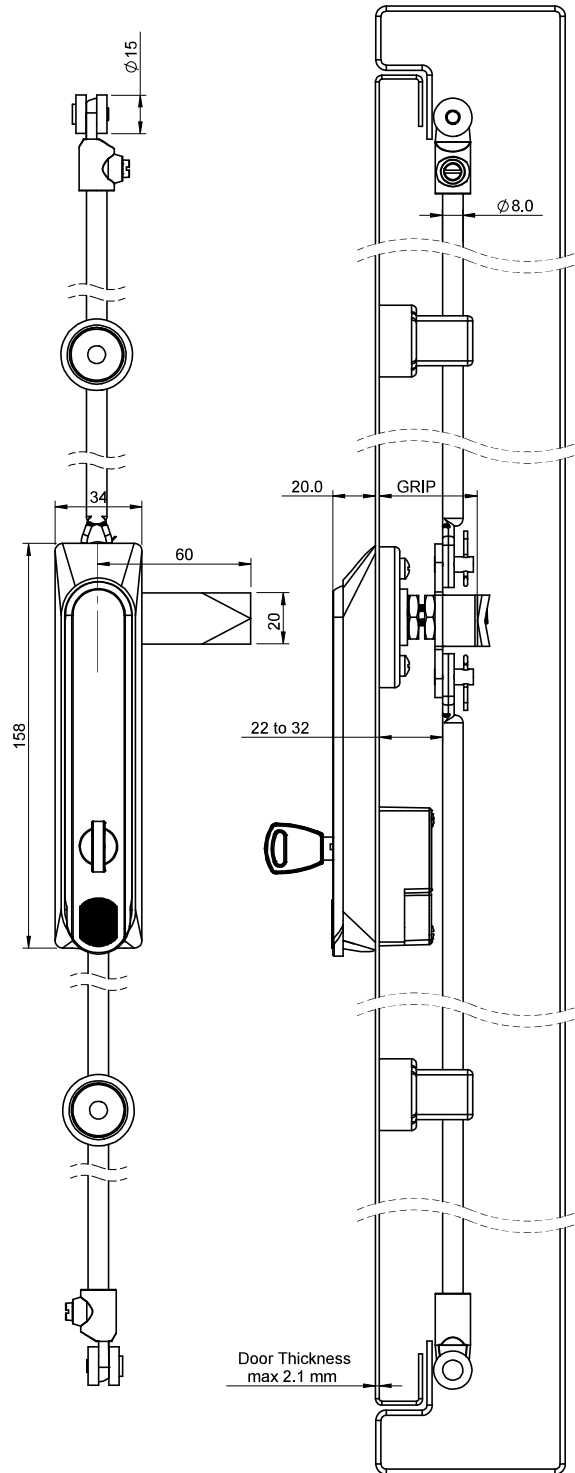


Product Code	Material	Type	Key
D4SP	Polyamide	With Plug	-
D4SSLG		With Shutter Acrylic Branding Plate	D-1333
D4SP-L		With Pad Lock	-
D4SML-CH	Polyamide & Zinc	Die Cast Handle	D-1333
D4SHL		With Shroud	
D4SL-CY1	Polyamide	With Profile Cylinder	D-1333
D4SHL-CY2		With Profile Cylinder & With Insert	
D4SML-CY2T	Polyamide & Zinc	With Profile Cylinder & With 'T' Insert	DB5K
D4C5	Polyamide	With Insert	D-1333
D4SL		With Key	
D4SLG		With Acrylic Branding Plate	

Swing Handle System - Round Rods



- D4SQBH Set** Consists of
 Lock : **D4SL-QBC**
 (1 no.)
 Flat Rod : **D4F-1065**
 (2 nos.)
 Rod Guide : **D3RGR**
 (2 nos.)
 Adaptor : **DRAS**
 (2 nos.)



D 4 S Q B H

Material	Key
Polyamide	D-1333

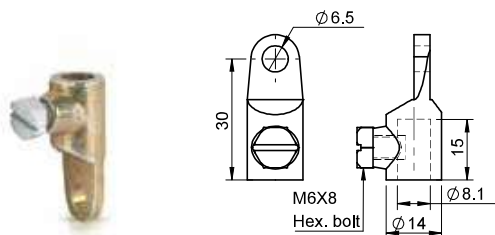


MULTI-POINT LOCKS

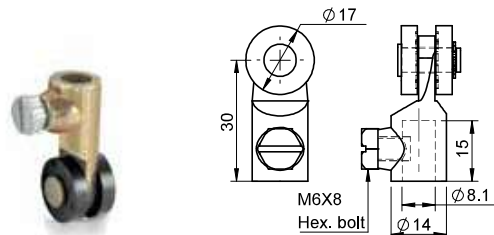
3 Point Lock Accessories

MS, Polyamide

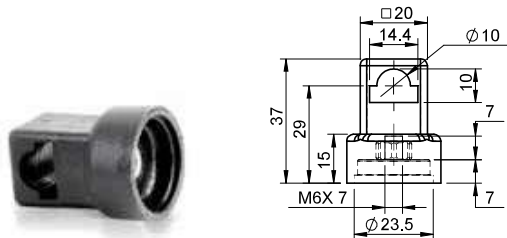
- IV
- I
- II
- III
- IV
- V
- VI
- VII
- VIII
- IX
- X
- XI
- XII
- XIII
- XIV



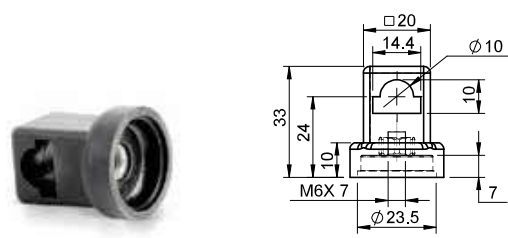
DRA



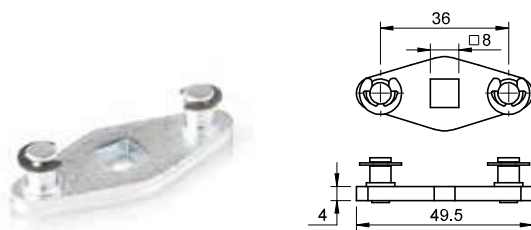
DRAS



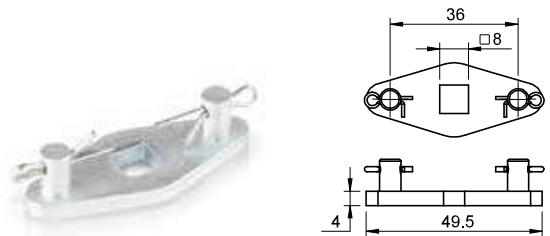
D3RGR



D3RGR4



ACSQ-36



ACSQR-36



FC



LC

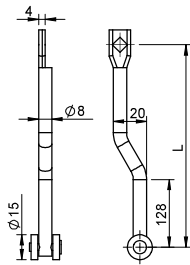


QBC

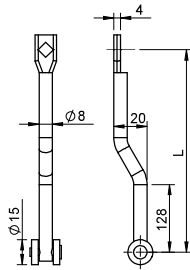


QBC-SS

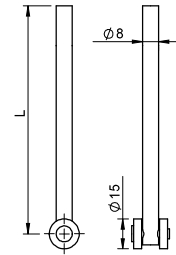
Part Code	Material	Finish	H	C	L	T	W
FC	MS	Blue Zinc	28	52	45	04	20
LC			33	40	43		19
LC36			32	36	33		19
QBC	SS-304	Sand Blasting	16	44	60	03	20
QBCC							
QBC-SS							



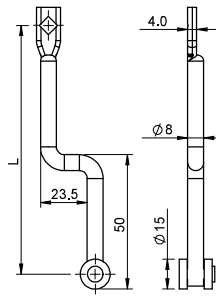
D4FAR20-L



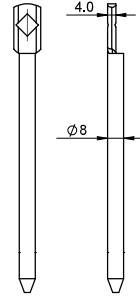
D4FARQ20-L



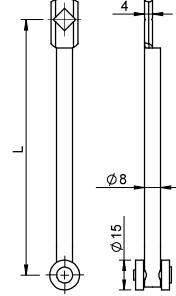
D4DR-L



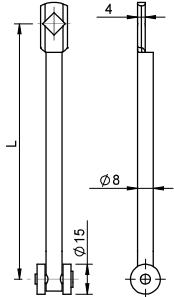
D4FOR-L



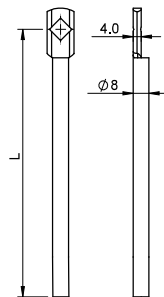
D4FP-L



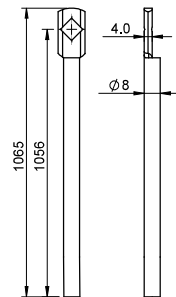
D4FR-L



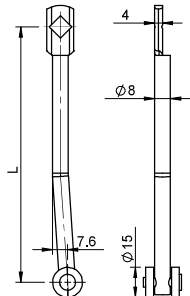
D4FRQ-L



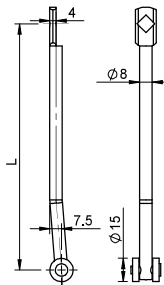
D4F-L



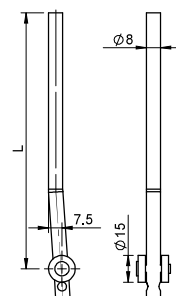
D4F-1065



D4FBR-L



D4FBRQ-L



D4BR-L

IV

I

II

III

IV

V

VI

VII

VIII

IX

X

XI

XII

XIII

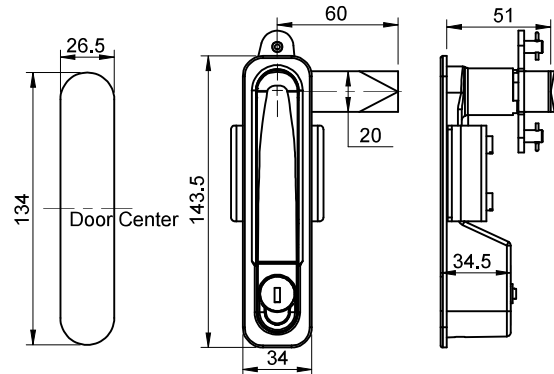
XIV

MULTI-POINT LOCKS

Swing Handle - D14

Zinc

IV

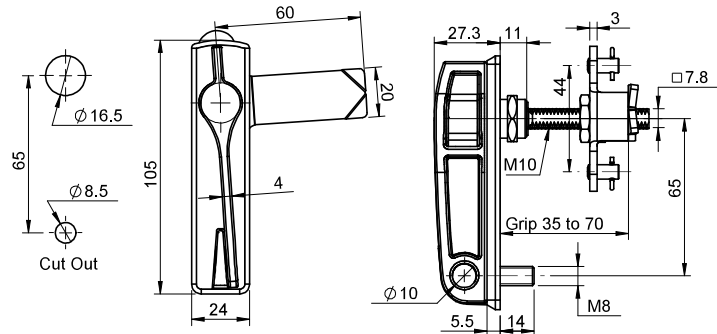


D 14 S L - QBC - L - PC

Material	Finish	Key	Description
Zinc	Black PC	D-1333-M	Push to Lock

Swing Handle - DM27

Zinc

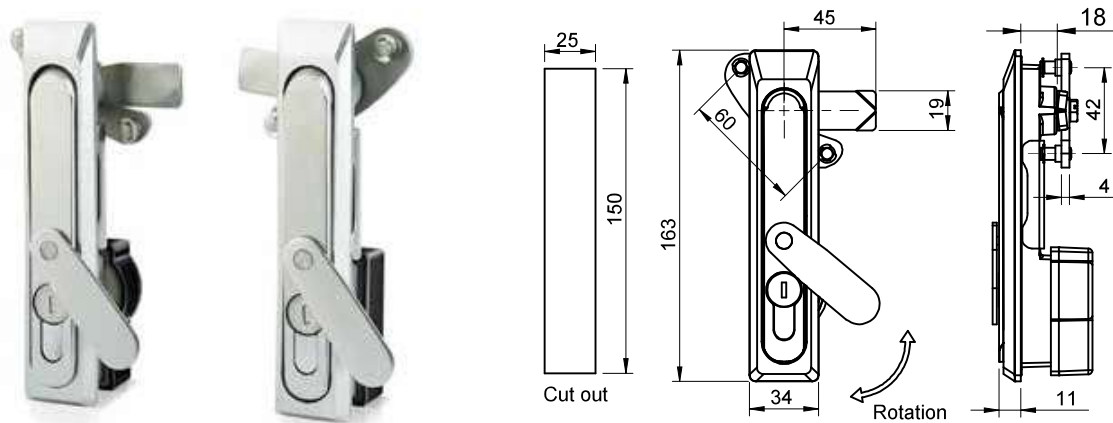


D 17 - L - S - 10x50 - QBC - L - PC

Part Code	Material	Finish	Description
DM17-L-S-10x50-QBC-L-PC	Zinc	Black PC	Anti-Clockwise Version
DM17-L-S-10x50-QBC-R-PC			Clockwise Version

Swing Handle - D15

SS-304

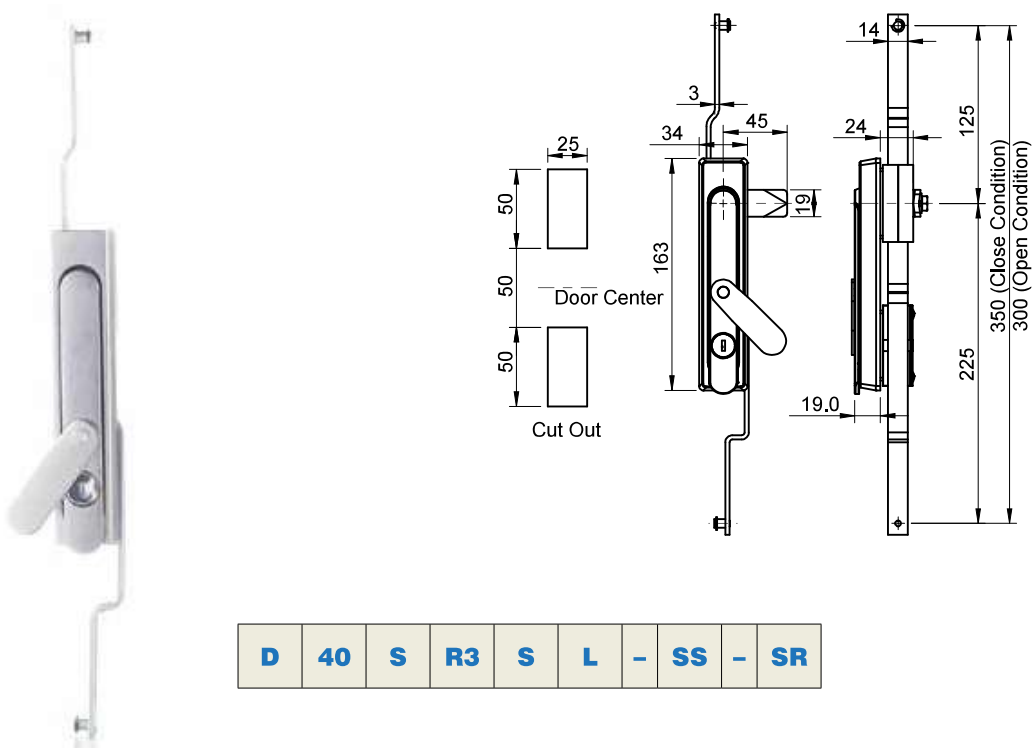


D	15	S	CY1	-	SH	-	SS	-	CA3	-	SR	-	L
----------	-----------	----------	------------	----------	-----------	----------	-----------	----------	------------	----------	-----------	----------	----------

Part Code	Material	Finish	Key	Description
D15SCY1-SH-SS-CA3-SR-L	SS-304	EP	D-1333-M	Push to Lock
D15SCY1-SH-SS-CA3-SR-R				

Swing Handle - D14

SS-304



D	40	S	R3	S	L	-	SS	-	SR
----------	-----------	----------	-----------	----------	----------	----------	-----------	----------	-----------

Material	Finish	Key	Description
SS-304	EP	D-1333-M	Swing Handle

IV

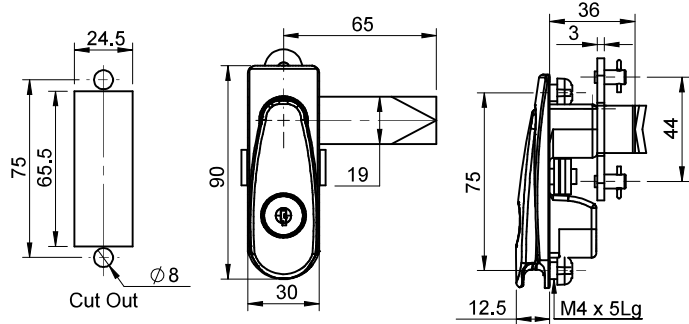


MULTI-POINT LOCKS

Swing Handle - D18

Polyamide

- IV
- I
- II
- III
- IV
- V
- VI
- VII
- VIII
- IX
- X
- XI
- XII
- XIII
- XIV

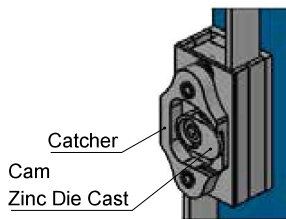
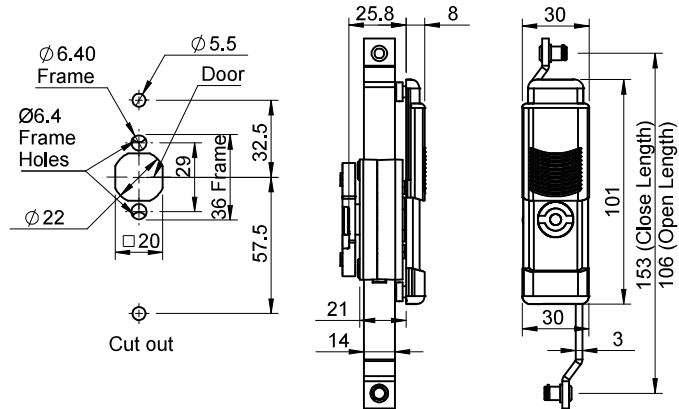


D 18 S L - QBC - L

Part Code	Material	Key
D18SL-QBC-L	Polyamide	D-1333
D18SL-QBC-R		

Swing Handle - D19

Polyamide



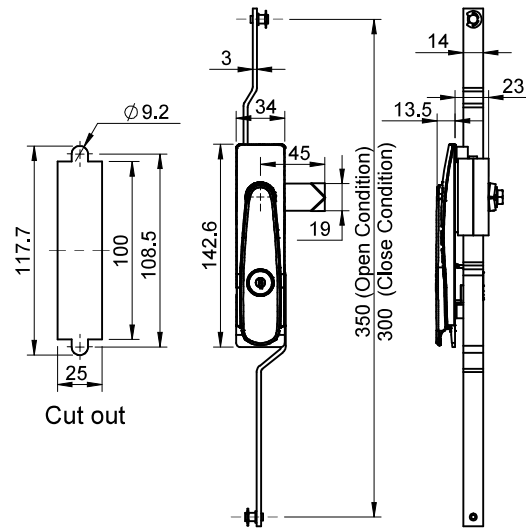
D 19 L G

Material	Key
Polyamide	D85K

MULTI-POINT LOCKS

Swing Handle - D21

Polyamide

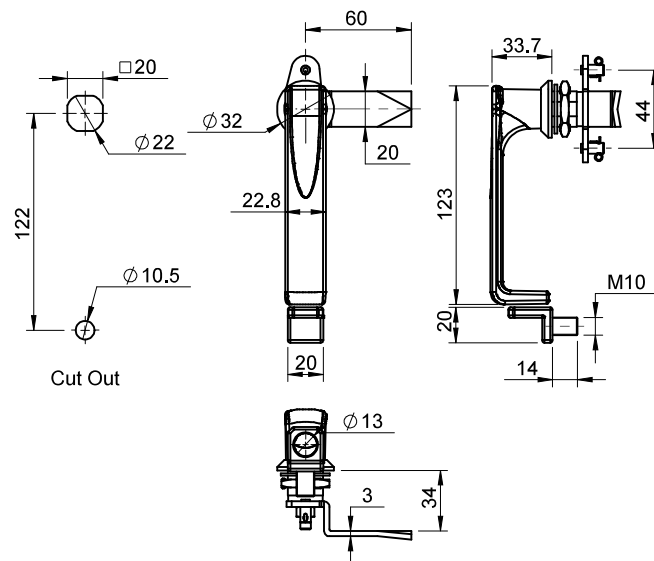


D 18 S L - QBC - L

Part Code	Material	Key
D21R2SL-MR	Polyamide	D-1333
D21R2PSL-Z1		

Swing Handle - DM25

Zinc



D M 25 - L - QBC - PC

Material	Finish
Zinc	Black PC

IV



I



II



III



IV



V



VI



VII



VIII



IX



X



XI



XII



XIII



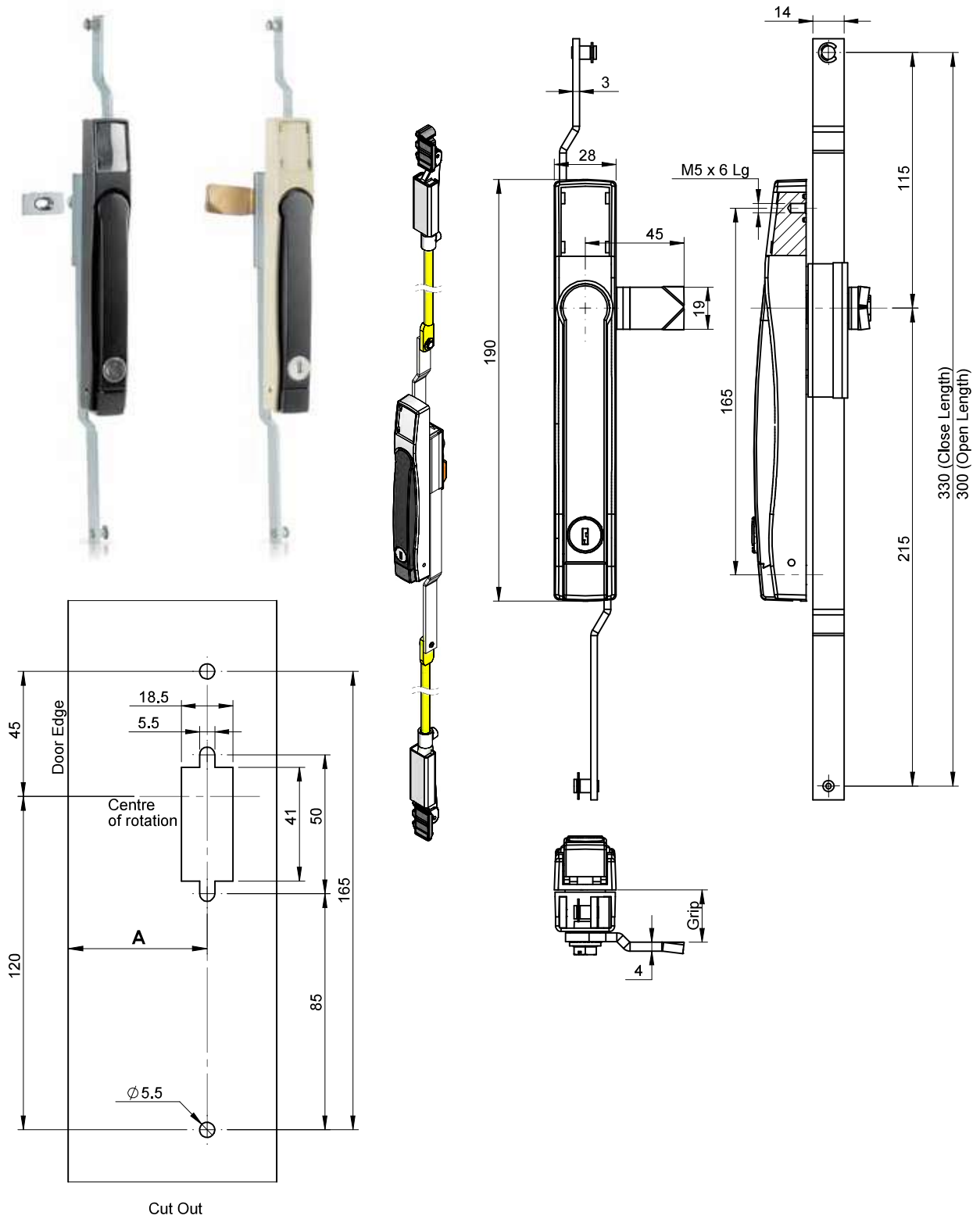
XIV

MULTI-POINT LOCKS

Swing Handle - DM24

Zinc

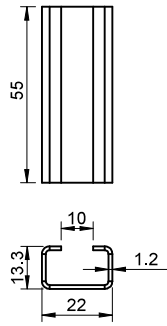
- IV
- I
- II
- III
- IV
- V
- VI
- VII
- VIII
- IX
- X
- XI
- XII
- XIII
- XIV



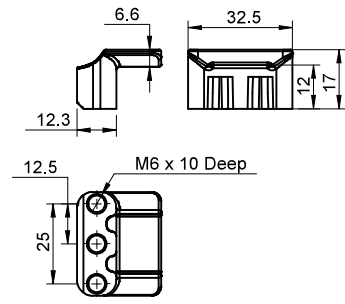
D M 24 R9 - ZCL3 - PC

Part Code	Material	A	Finish	Key
DM24R9-ZCL3-PC	Zinc	18	Black PC	DM-24
DM24R9-MR4-Gray		50		

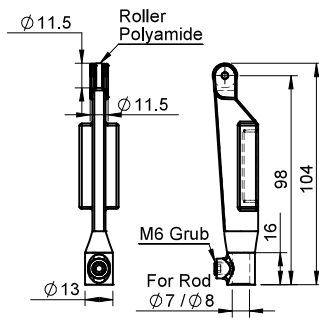
- IV
- I
- II
- III
- IV
- V
- VI
- VII
- VIII
- IX
- X
- XI
- XII
- XIII
- XIV



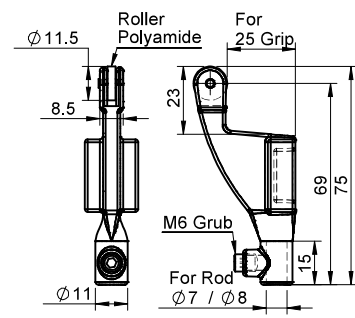
DR7G



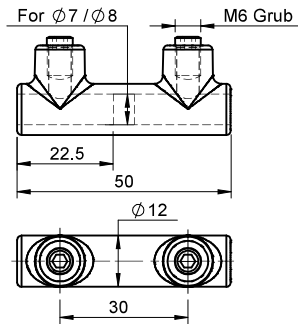
DR7C



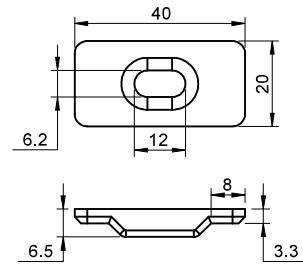
DRA-7-11 | DRA-8-11



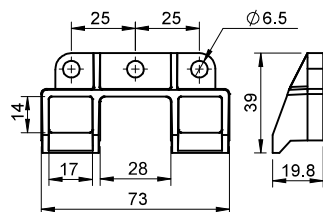
DRA-7-25 | DRA-8-25



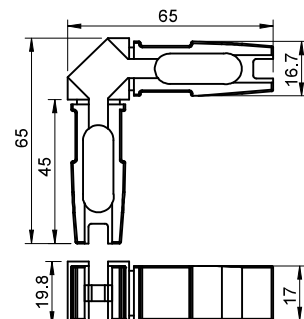
DZJ-8 | DZJ-7



ZCL3



D2HRZ

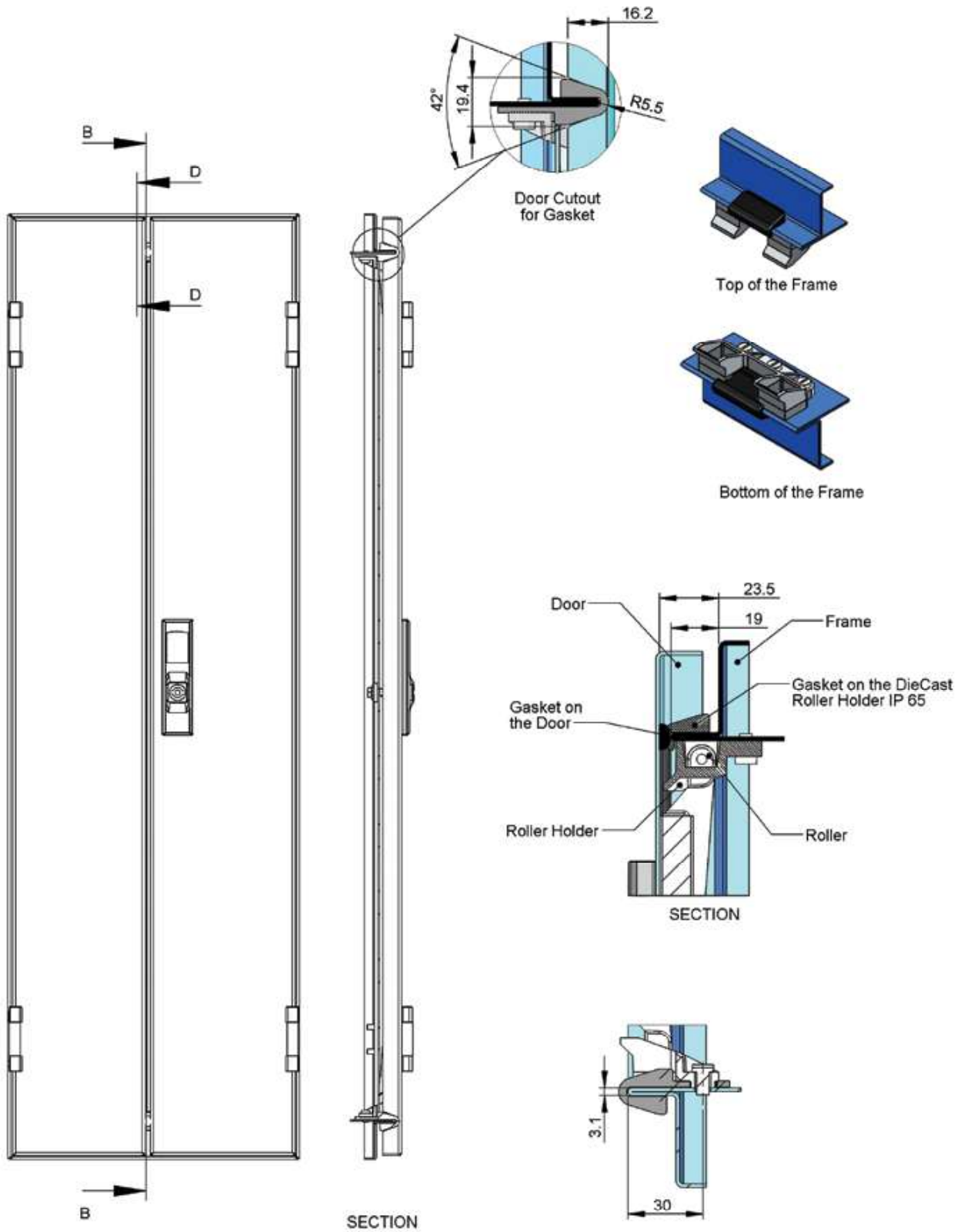


DPC-17

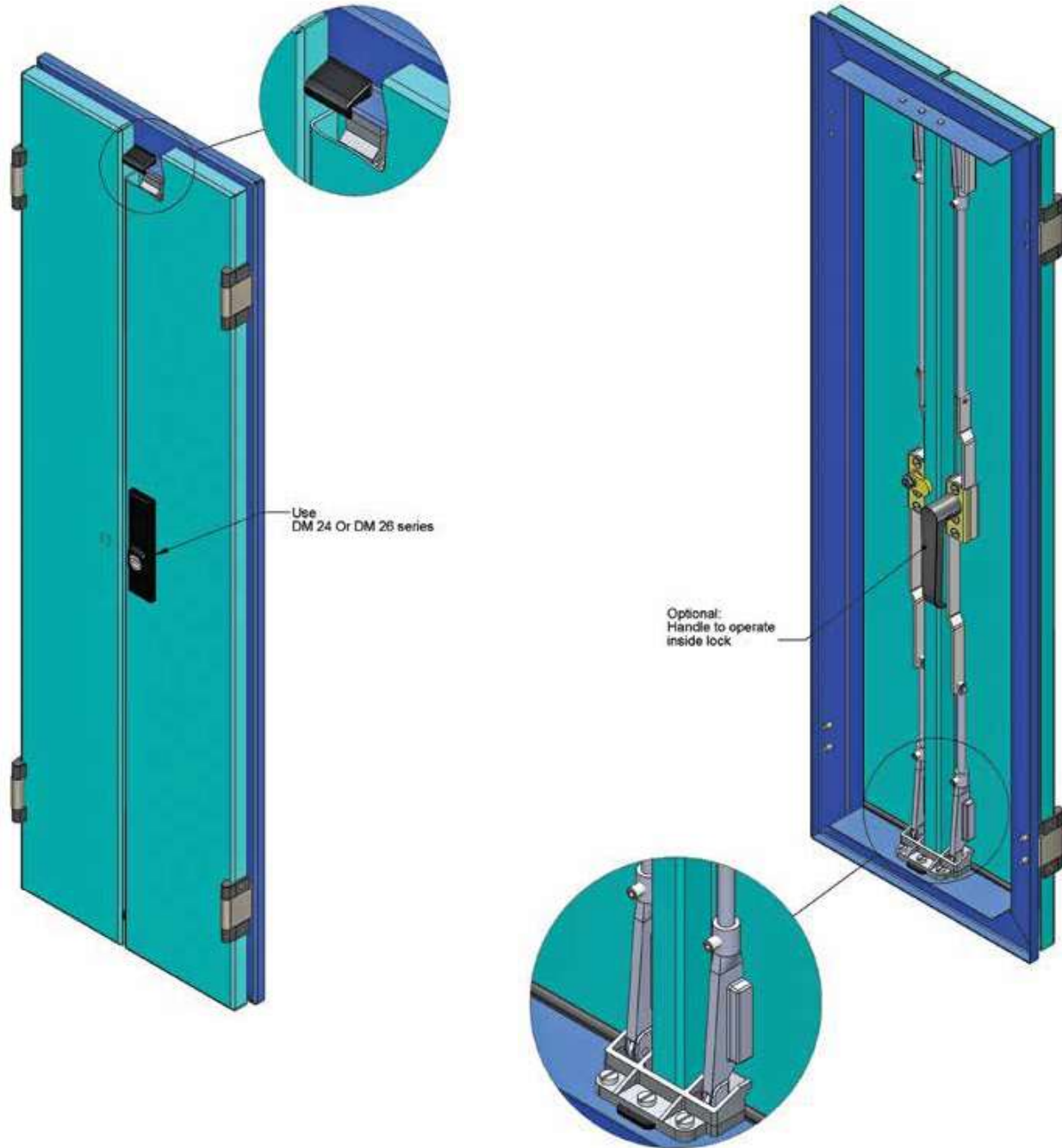
MULTI-POINT LOCKS

Double Door System

- IV
- I
- II
- III
- IV
- V
- VI
- VII
- VIII
- IX
- X
- XI
- XII
- XIII
- XIV

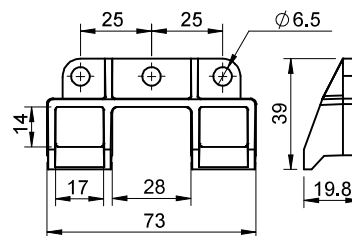


Double Door System



- IV
- I
- II
- III
- IV
- V
- VI
- VII
- VIII
- IX
- X
- XI
- XII
- XIII
- XIV

- DK-DDS-F1 Set Consists of**
- Lock : **DM24R9-MR-PC**
(1 no.)
 - Lock : **R9L1MP-PC**
(1 no.)
 - Round Rod : **D4F-1065**
(4 nos.)
 - Rod Guide : **D34RG**
(4 nos.)
 - Adaptor : **DR7G**
(4 nos.)
 - DRA-8-11**
(4 nos.)
 - Adaptor Guide : **D2HRZ**
(2 Nos.)

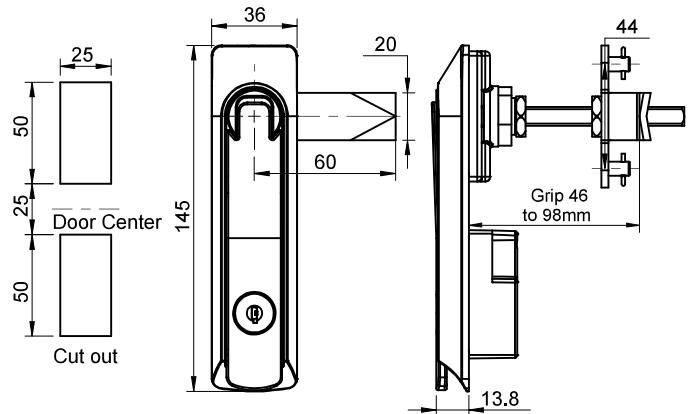


MULTI-POINT LOCKS

Swing Handle - DM27

Zinc

- IV
- I
- II
- III
- IV
- V
- VI
- VII
- VIII
- IX
- X
- XI
- XII
- XIII
- XIV

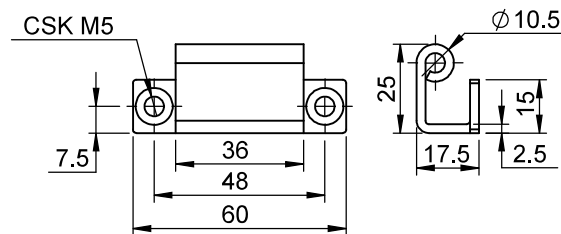
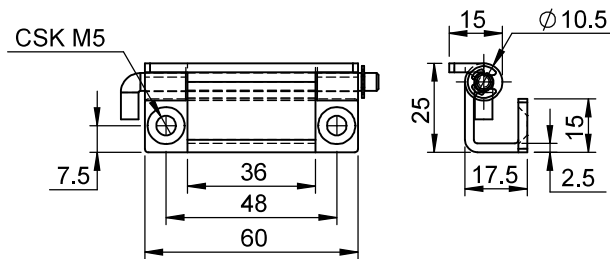


D M 27 - K - S - 10x75 - QBC - CH

Material	Finish	Key
Zinc	CH	D-1333

Symmetrical Compact Lock Accessories

MS



Part Code	Material	Finish	Description
DHIM-6025	MS	Blue Zinc Plated	Hinge
DMRLG2			Catcher

Symmetrical Compact Lock



DM32-K



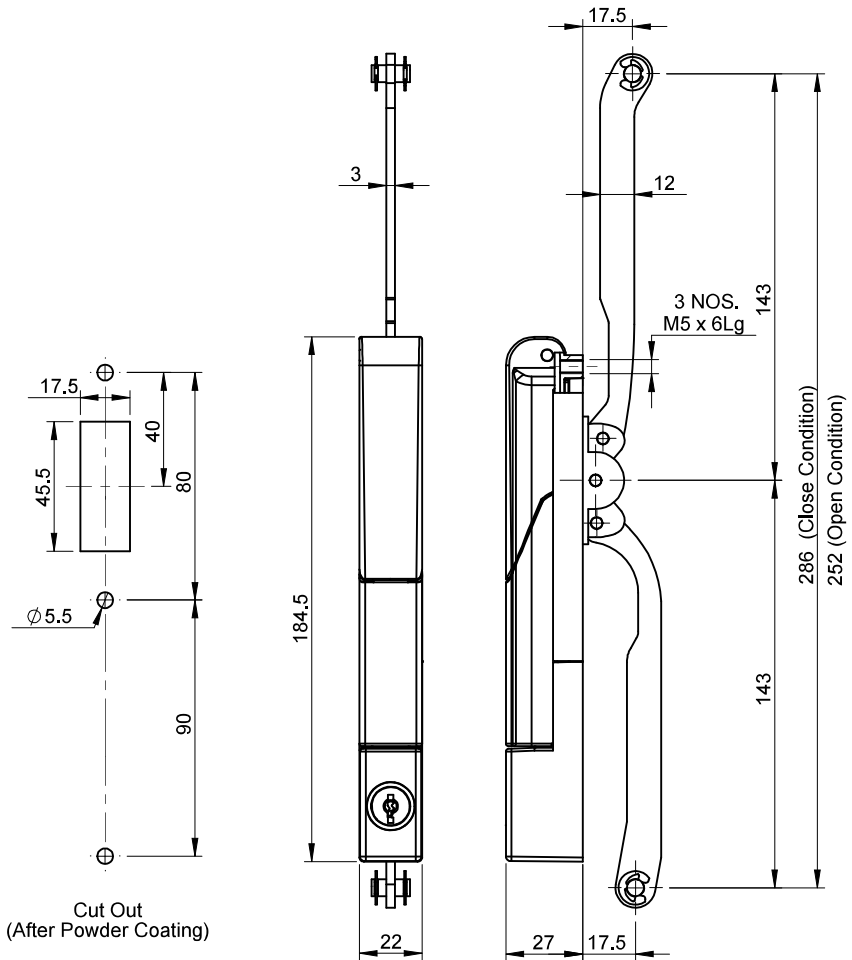
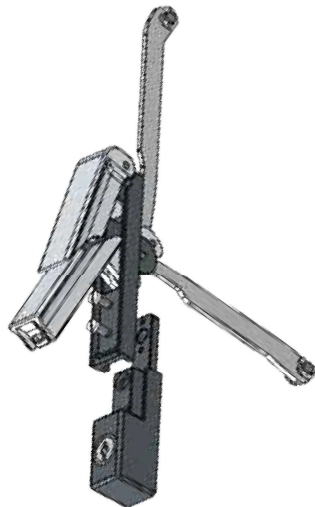
DM32-2



DM32-2L



DK32



Part Code	Material	Base Finish	Handle Finish	Key
DM32-K	Zinc	Gray (RAL-7011) PC	SPC	D-2233
DM32-2				DK-32
DM32-2L				
DK32		Nickel Plated		Key

IV



MULTI-POINT LOCKS

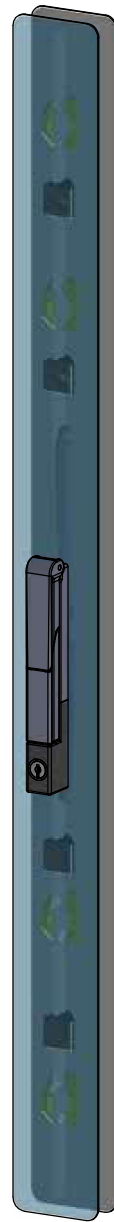
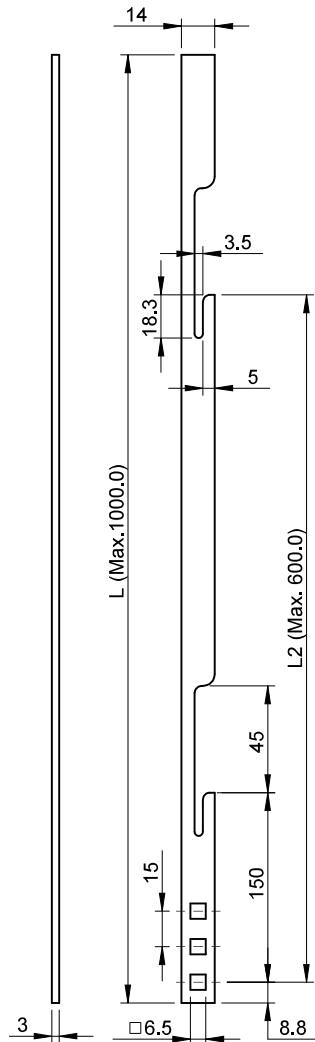
Symmetrical Compact Lock

MS

- IV
- I
- II
- III
- IV
- V
- VI
- VII
- VIII
- IX
- X
- XI
- XII
- XIII
- XIV



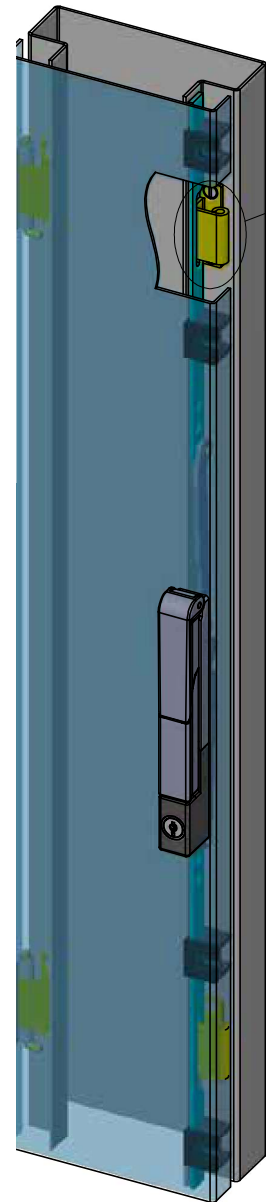
D3RL-H-L



4 Point Lock



3 Point Lock



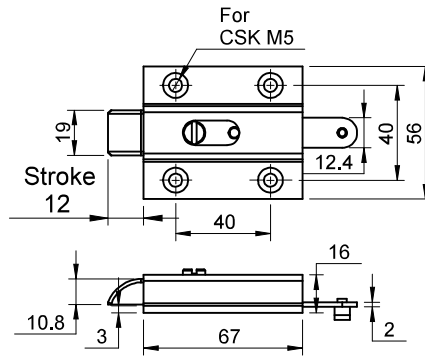
Multi Point Lock for Interchangeable Door

D 3 R L - H - L

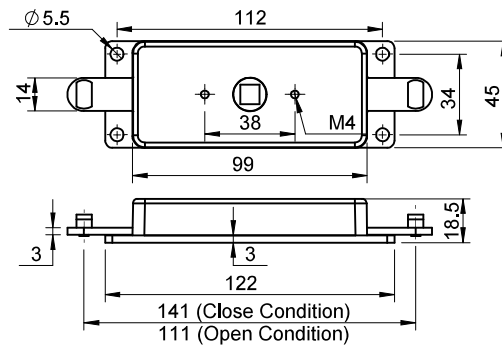
Material	Finish
MS	Nickel Plated
Application View : DM32-K	



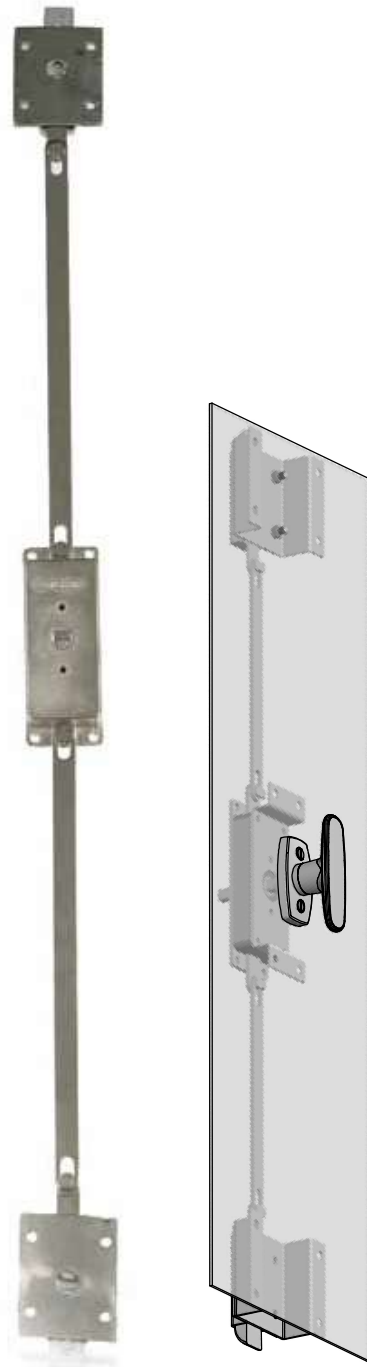
DZSRP-F



DZSRP



DZCRP



D Z S R P - F

- IV
- I
- II
- III
- IV
- V
- VI
- VII
- VIII
- IX
- X
- XI
- XII
- XIII
- XIV

Part Code	Material	Finish
DZSRP-F	SS-304, MS	Buffing & Nickel Plated
DZSRP		
DZCRP	Zinc, MS	Nickel Plated

MULTI-POINT LOCKS

Rack & Pinion - DMRPU

Zinc

- IV
- I
- II
- III
- IV
- V
- VI
- VII
- VIII
- IX
- X
- XI
- XII
- XIII
- XIV



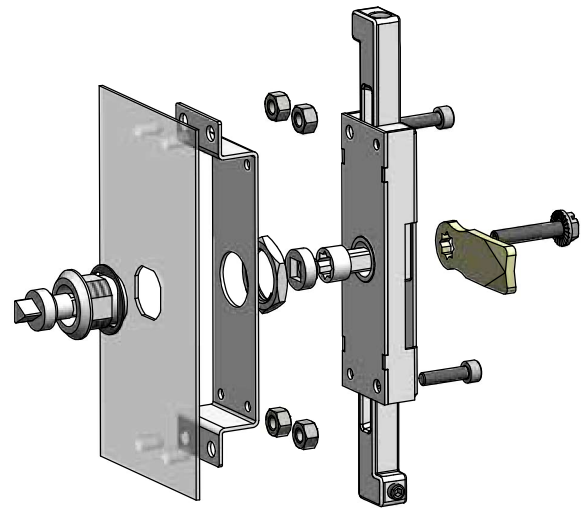
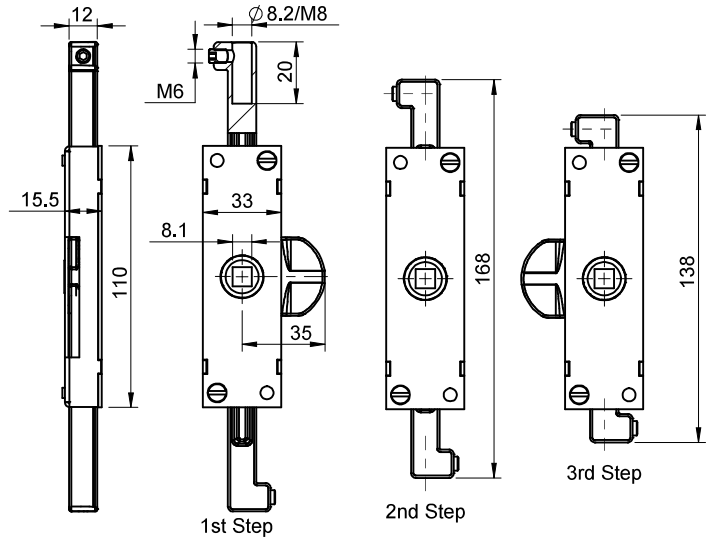
DMRPU-ZC



Connector End
Standard Version with
Grub Screw. 8 Ø Rod



DMRPU-TH-ZC
DMRPU-TH-MR
Connector End
Threaded Version - M8



Assembly Exploded View



Application View

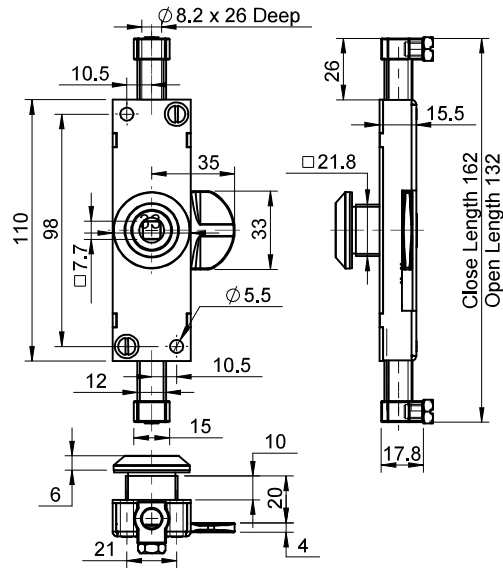
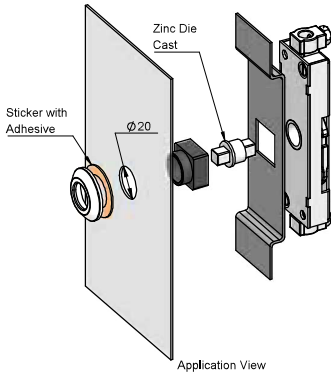
D M R P U - ZC

Part Code	Material	Finish	Description
DMRPU-ZC	Zinc	Blue Zinc Plated	With Zinc Die Cast Cam
DMRPU-TH-ZC			With Zinc Die Cast Cam, Threaded Version
DMRPU-TH-MR			With MR Cam, Threaded Version
DMRPU Bracket			Mounting Bracket

MULTI-POINT LOCKS

Rack & Pinion - DMRPU

MS, Zinc

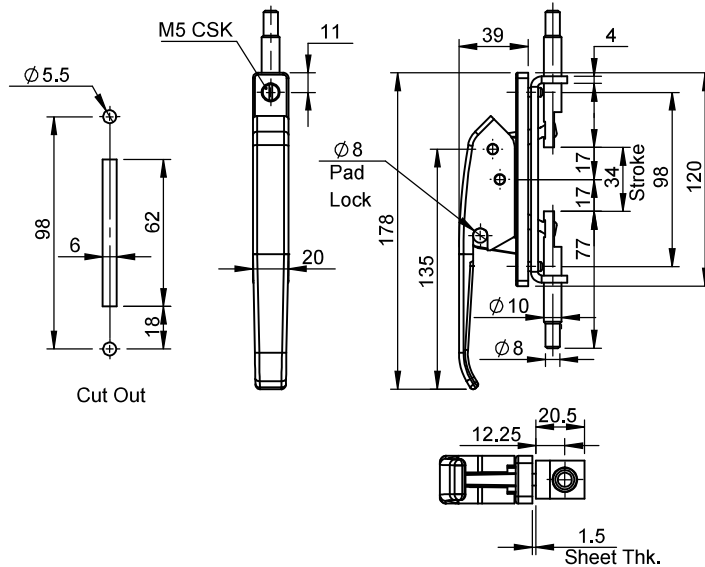


D M R P U 90 - ZC - SU

Material	Finish
Zinc	Blue Zinc Plated

Symmetrical Pad Lock

MS, Zinc



D M 36 L

Material	Finish
Zinc, MS	Black PC

IV

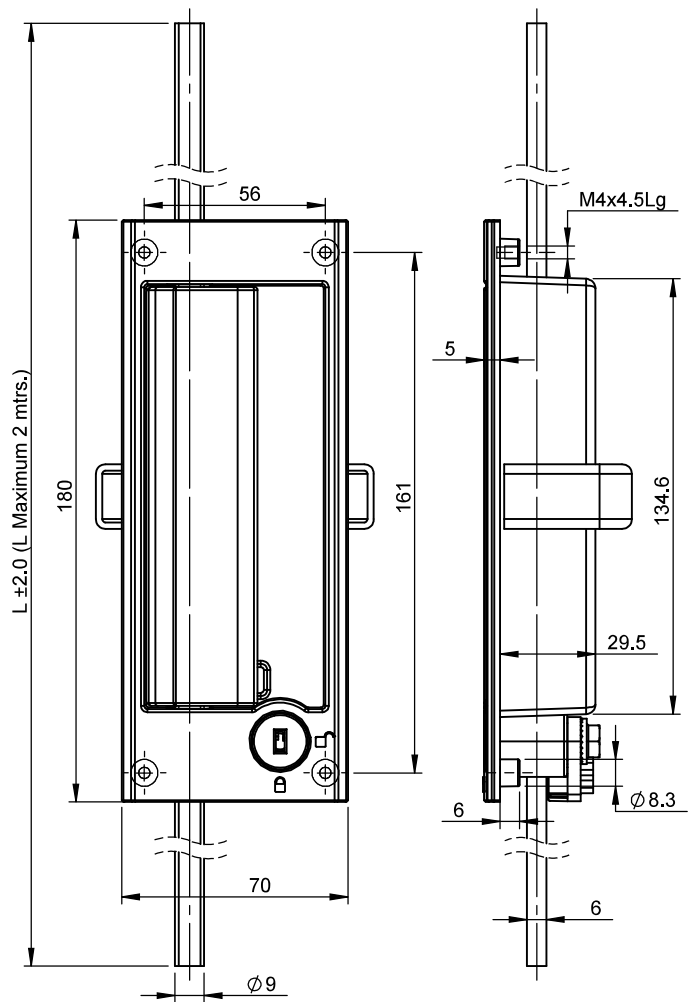
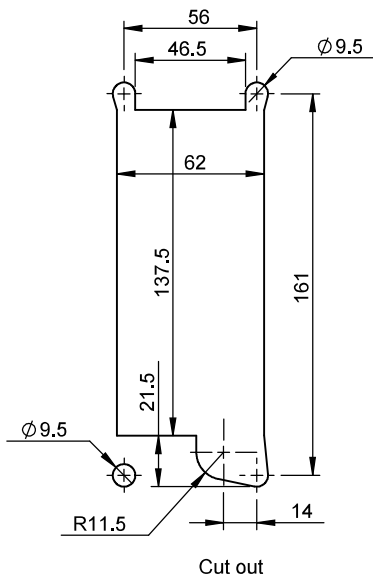


MULTI-POINT LOCKS

Furniture Lock

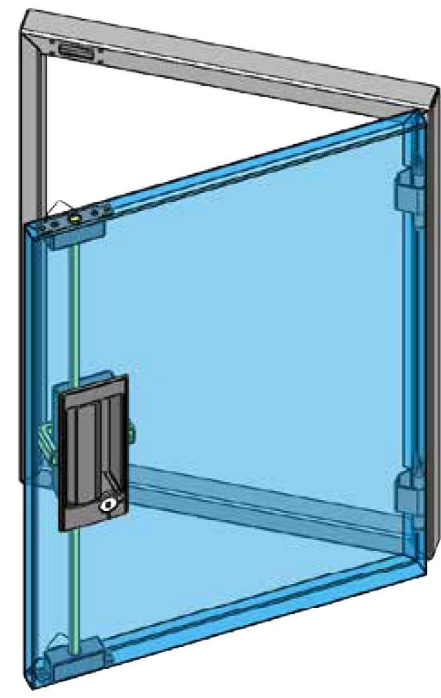
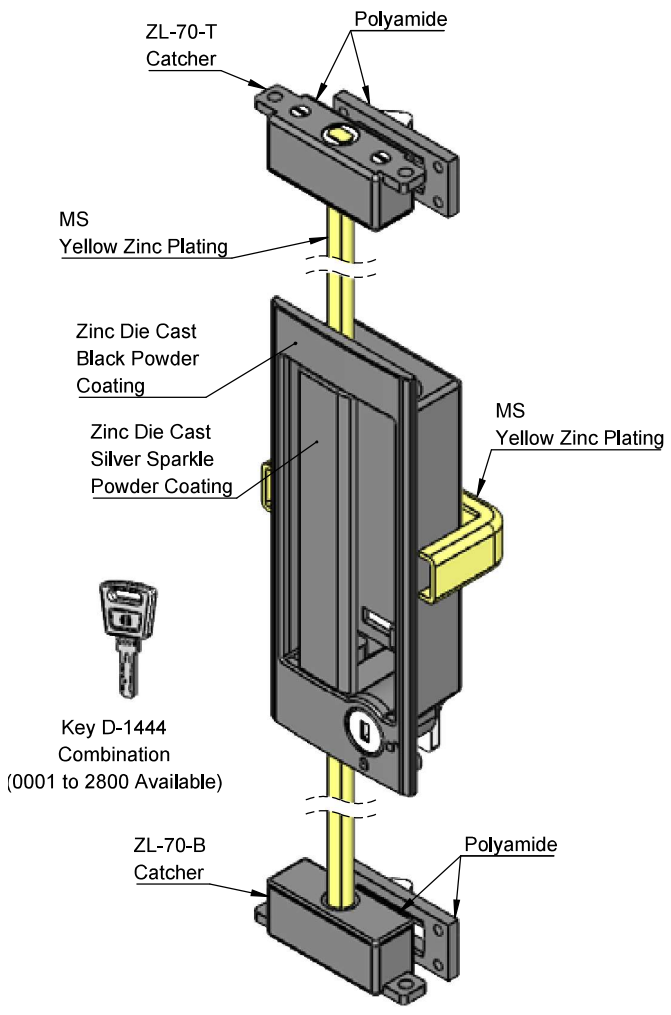
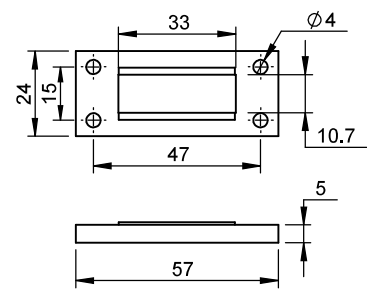
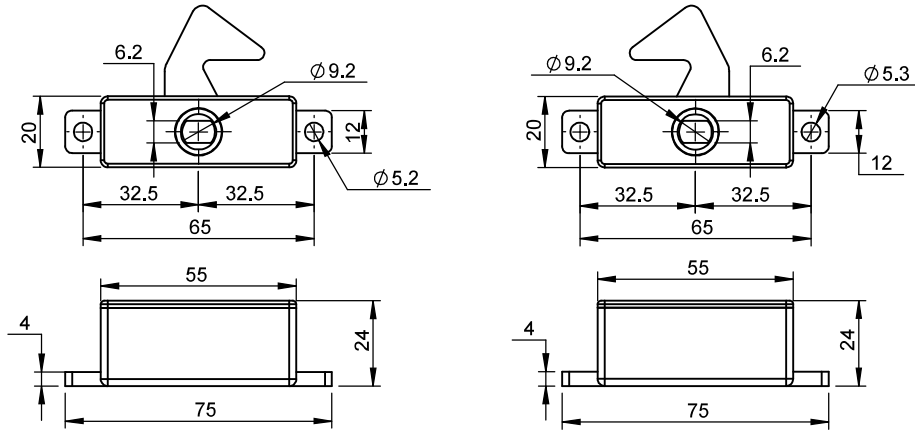
Zinc

- IV
- I
- II
- III
- IV
- V
- VI
- VII
- VIII
- IX
- X
- XI
- XII
- XIII
- XIV



D Z F L - 70

Base Material	Base Finish	Handle Material	Handle Finish
Zinc	Black PC	Zinc	Black PC



IV

I

II

III

IV

V

VI

VII

VIII

IX

X

XI

XII

XIII

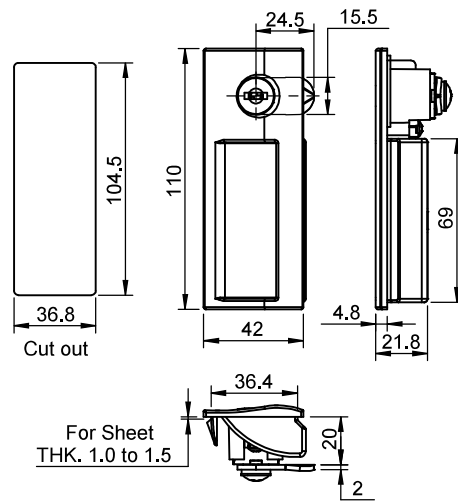
XIV

MULTI-POINT LOCKS

Furniture Lock

Polyamide

- IV
- I
- II
- III
- IV
- V
- VI
- VII
- VIII
- IX
- X
- XI
- XII
- XIII
- XIV

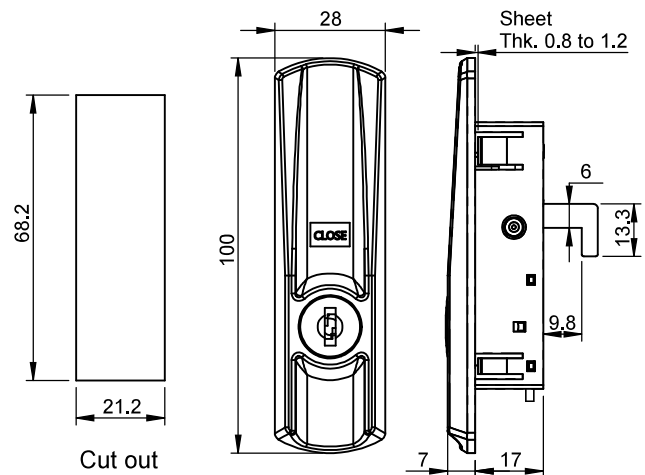


D H P - 110 - L

Material	Key
Polyamide	MK-1555

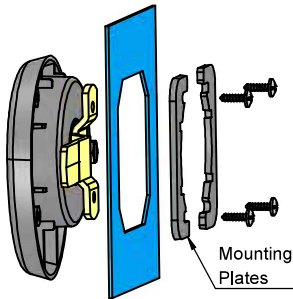
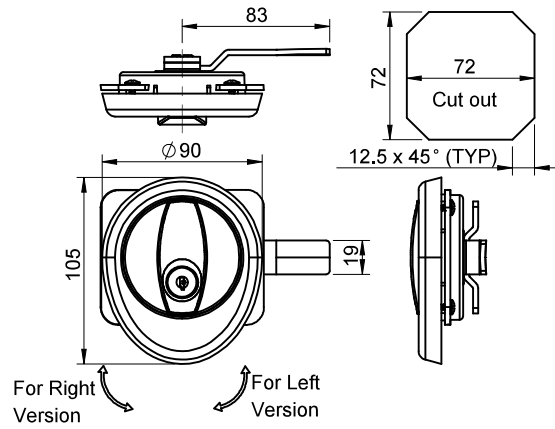
Furniture Lock

Polyamide



D P H L - 110

Material	Key
Polyamide	MK-1555



D F P C - 105

Part Code	Base Material	Handle Material	Handle Finish	Key
DFPC-105	Polyamide	Zinc	CH	D-1333
DFPC-105-CD				D-1333-CD

- IV
- I
- II
- III
- IV
- V
- VI
- VII
- VIII
- IX
- X
- XI
- XII
- XIII
- XIV