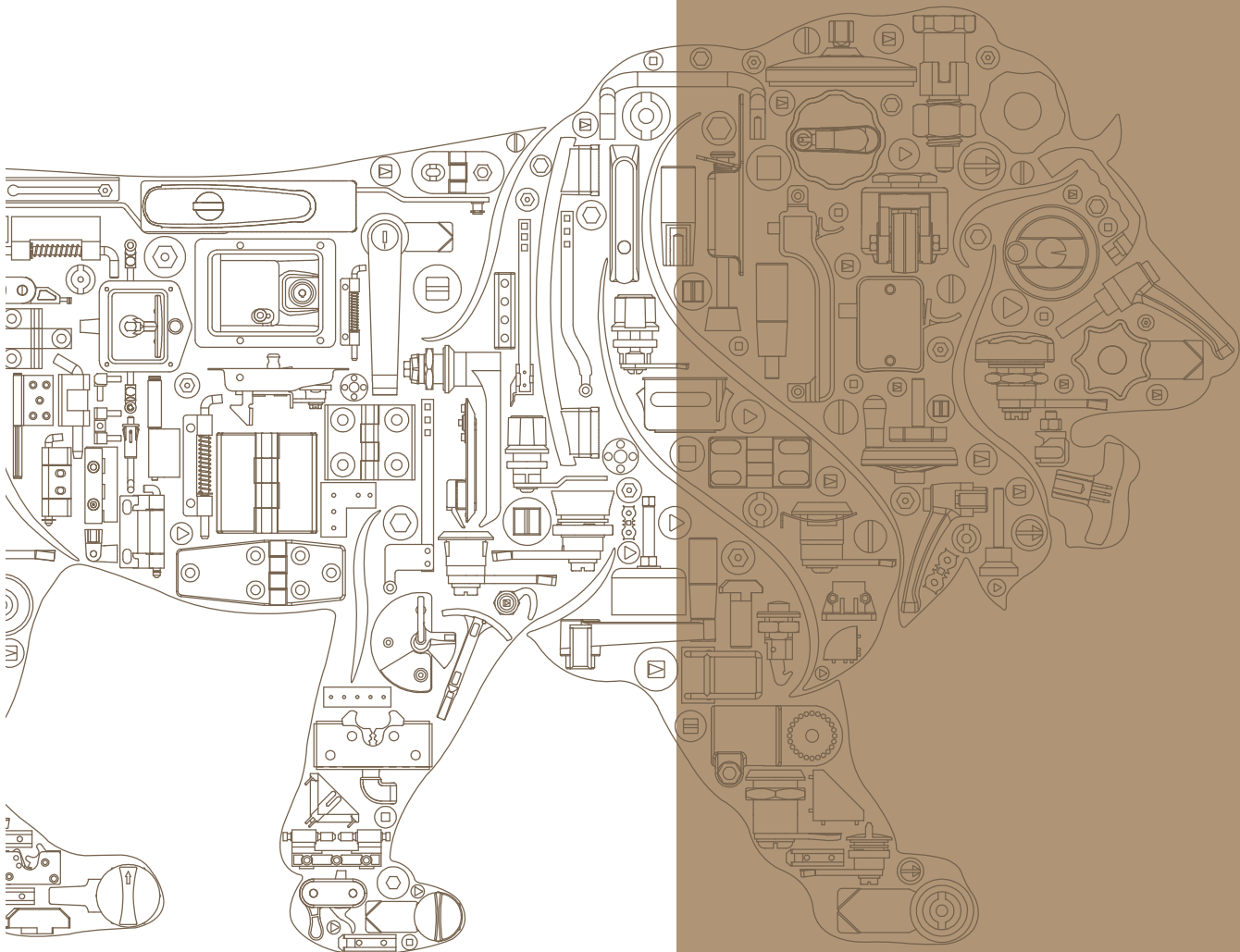


LATCHES



Made in India  Made for You

LATCHES

Fire Latch

SS-202, Zinc

III



I



II



III



IV



V



VI



VII



VIII



IX



X



XI



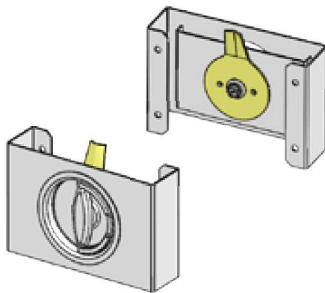
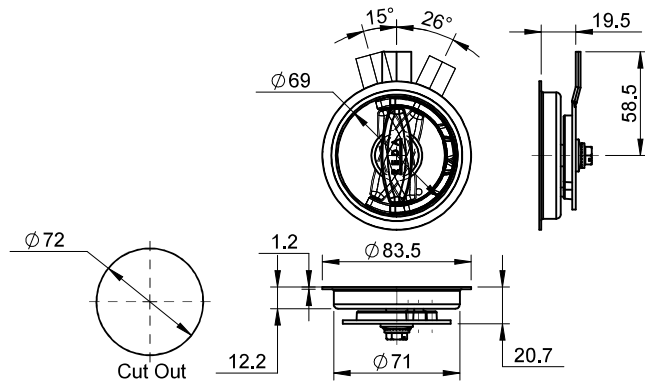
XII



XIII



XIV

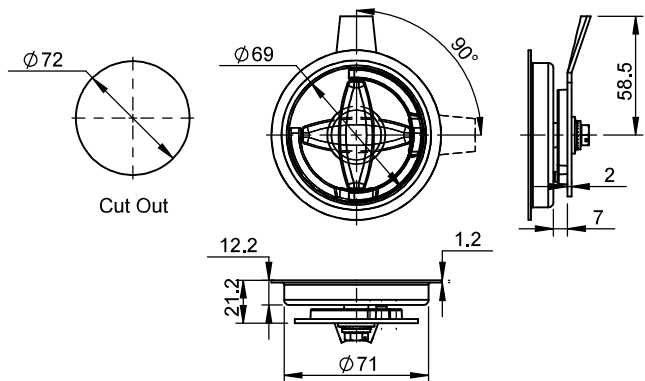


D M F F - 83

Part Code	Cover Material	Cover Finish	Handle Material	Handle Finish	Description
DMFF-83	SS-202	Buffed	Zinc	CH	Flush Lock

Fire Latch

SS-202, Zinc

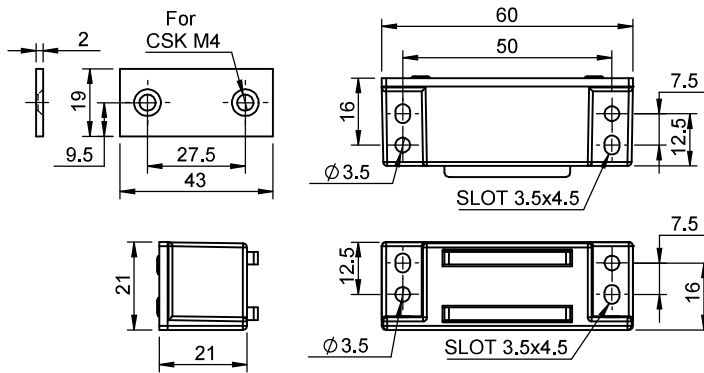


D M F F - 83 - 93

Part Code	Cover Material	Cover Finish	Handle Material	Handle Finish	Description
DMFF-83-90	SS-202	Buffed	Zinc	CH	Flush Lock

Magnetic Catch

Zinc, MS

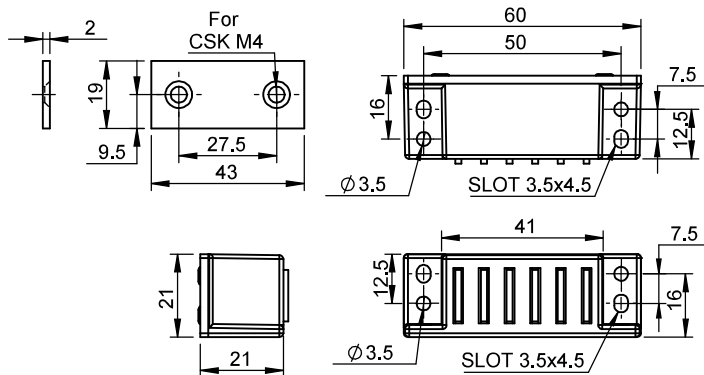


D M L M - H6020

Part Code	Material	Finish	Description	Handle Finish
DMLM-H6020	Zinc, MS	Nickel, Blue Zinc	Magnetic Catch	CH

Magnetic Catch

Zinc, MS



D M L M - 6020

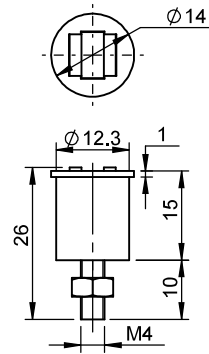
Part Code	Material	Finish	Description	Handle Finish
DMLM-6020	Zinc, MS	Nickel, Blue Zinc	Magnetic Catch	CH



LATCHES

Magnetic Catch

Zinc, Polyamide

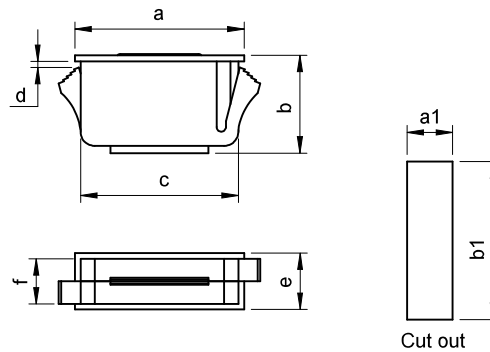


D **X** **L** **M** - **12**

X	Material	Description	Finish
P	Polyamide	Magnetic Catch	
Z	Zinc	Magnetic Catch	Black PC

Magnetic Catch

Polyamide

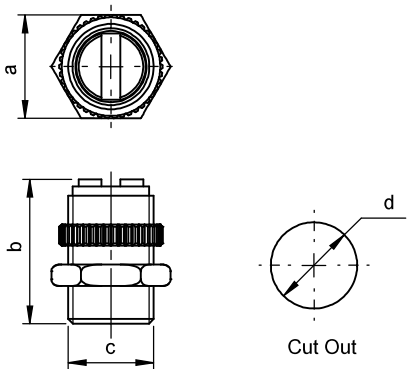


D **P** **L** **M** - **X**

X	a	b	c	d (Sheet Thk)	e	f	Cut Out
124-2	23.8	13.7	22.2	0.5 to 2.0	7.9	6.4	6.4 x 22.2
124-3.5				2.0 to 3.5			
139-2	39.4	25.4	37.7	0.5 to 2.5	9.4	7.9	8.13 x 38.1
239-3.5				2.5 to 3.5			
339-5				3.5 to 5.0			
158-2	58.4	20.4	56.9	0.5 to 2.5	10.9	9.4	9.65 x 57.15
258-3.5				2.5 to 3.5			
358-5				3.5 to 5.0			

Magnetic Catch

Bras, MS

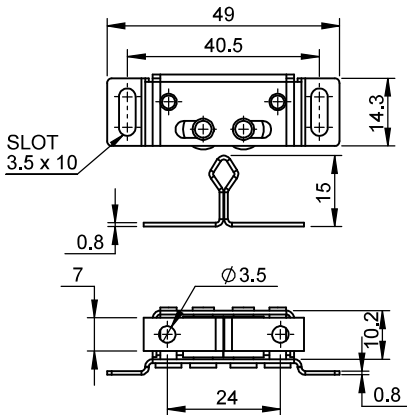


D B L M - X

X	a	b	c	d (Cut Out)	Finish
18	A/F 21.8	30.5	M18	Ø18.2	Nickel Plated
22	A/F 26	30.5	M22	Ø22.2	

Mechanical Catch

SS-304



D M L - 3014 - SS

Part Code	Material	Description	Finish
DML-3014-SS	SS-304	Roller Catch	Electro Polishing

III



I



II



III



IV



V



VI



VII



VIII



IX



X



XI



XII



XIII



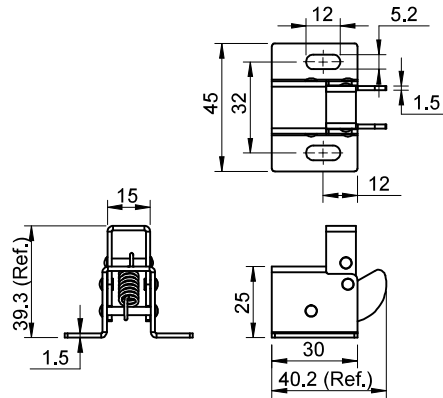
XIV

LATCHES

Mechanical Catch

MS

- III
- I
- II
- III
- IV
- V
- VI
- VII
- VIII
- IX
- X
- XI
- XII
- XIII
- XIV

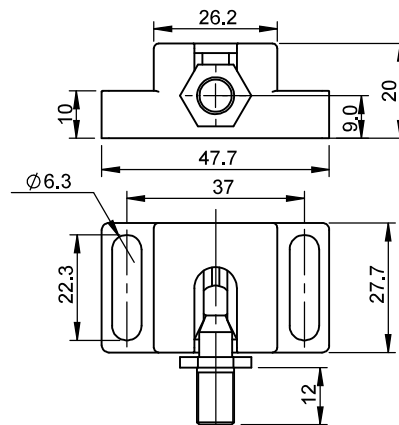


D S N L - 3040

Part Code	Material	Description	Finish
DSNL-3040	MS	Mechanical Catch	Blue Zinc Plated

Mechanical Catch

Polyamide



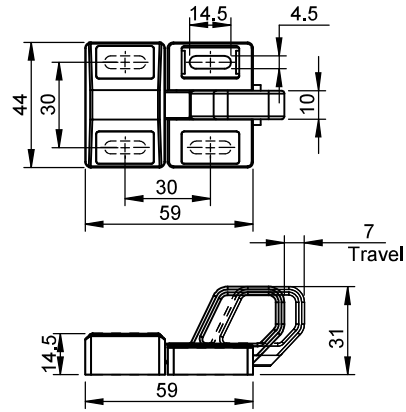
D P L M - 4827

Part Code	Base Material	Stud Material	Stud Finish	Description
DPLM-4827	Polyamide	MS	Nickel	Mechanical Catch

Fix base on panel before use Stud can be mounted Horizontally / Vertically

Slam Latch

Polyamide

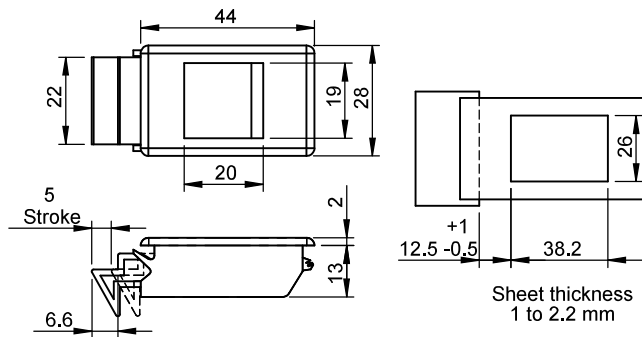


D P P L - 4430

Part Code	Material	Description
DPPL-4430	Polyamide	Slam Latch
DPPL2-4430		

Slam Catch

Polyamide



D P L S - 2538

Product Code	Material	Description
DPLS-2538	Polyamide	Slam Latch

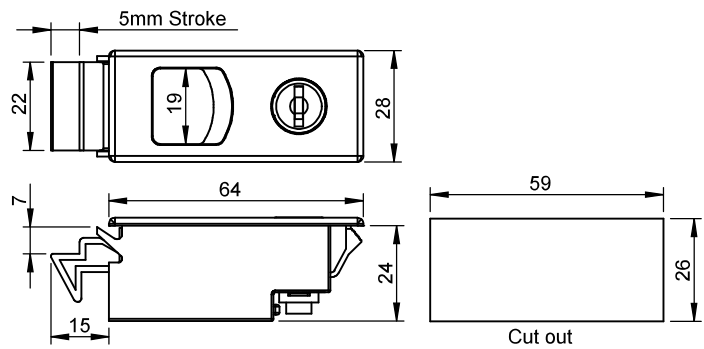
- III
- I
- II
- III
- IV
- V
- VI
- VII
- VIII
- IX
- X
- XI
- XII
- XIII
- XIV

LATCHES

Slam Catch

Polyamide

- III
- I
- II
- III
- IV
- V
- VI
- VII
- VIII
- IX
- X
- XI
- XII
- XIII
- XIV



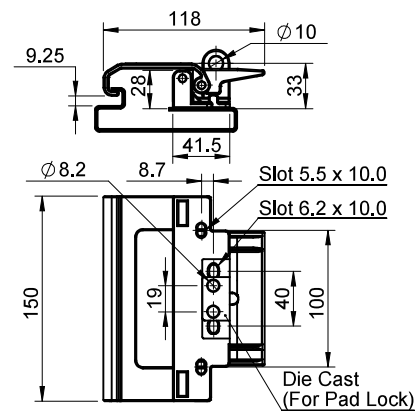
D P L S L - 6428

Part Code	Material	Key	Description
DPLSL-6428	Polyamide	D-1333	Slam Latch
DPLSP-6428		-	

Key not removed in unlock condition

Mechanical Catch

Polyamide, Zinc

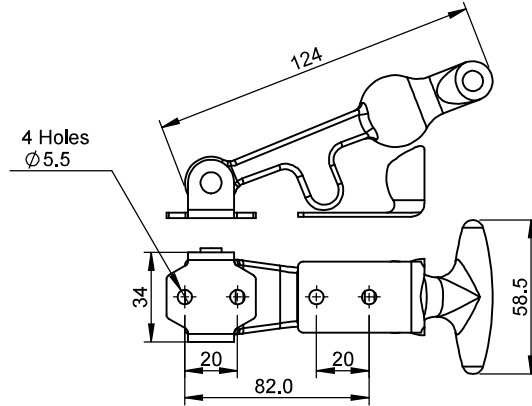


D P S N L - 150 - L

Part Code	Material	Version	Bracket Material	Bracket Finish	Description
DPSNL-150-L	Polyamide	Pad Lock	Zinc	Blue Zinc	Mechanical Catch
DPSNL-150		-	-	-	

Magnetic Catch

EPDM, MS, SS-304

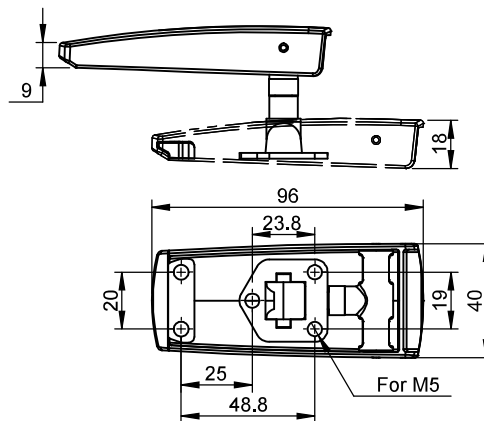


D P R L - 124

Product Code	Material	Finish	Description
DPRL-124	EPDM, MS	Blue Zinc Plated	Pull Latch
DPRL-124-SS	EPDM, SS-304	Electro Polishing	Pull Latch

Over Centre Latch

Polyamide



D P S N L - A - 9540

Product Code	Material	Description
DPSNL-A-9540	Polyamide	Adjustable Draw Latch

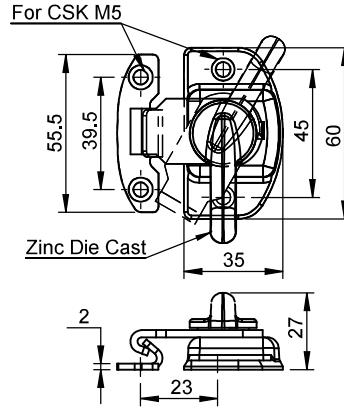
III



LATCHES

Over Centre Latch

SS-304, Zinc

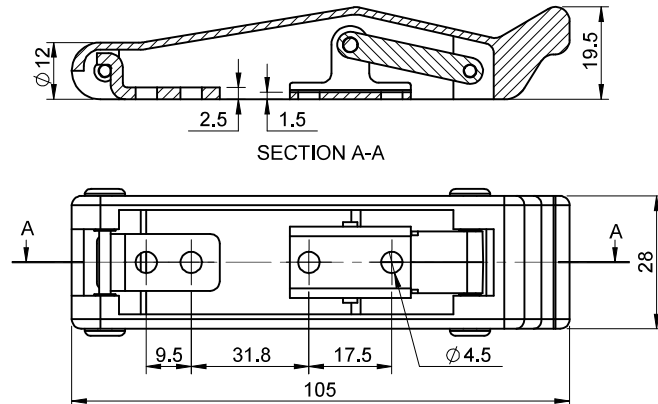


D S N L - 3560 - SS

Part Code	Material	Finish	Description
DSNL-3560-SS	SS-304	Electro Polishing	Cam Type Latch

Over Centre Latch

EPDM, SS-304

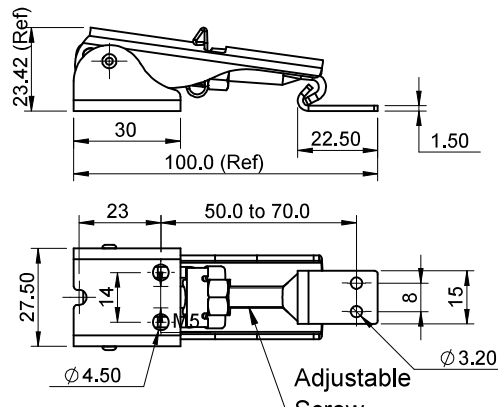


D P S N L - 105

Part Code	Material	Finish	Description
DPSNL-105	EPDM, SS-304	Electro Polishing	Cam Type Latch

Over Centre Latch

SS-304

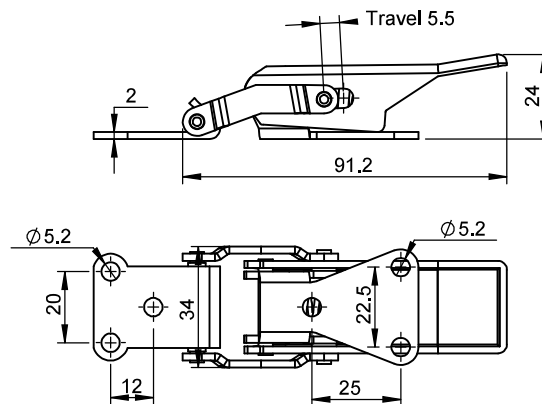


D S N L - L - 2769 - SS

Part Code	Material	Finish	Description
DSNL-L-2769-SS	SS-304	Electro Polishing	Adjustable Draw Latch
DSNL-2769-SS	SS-304	Electro Polishing	Adjustable Draw Latch

Over Central Latch

SS-304



D S N L - 8334 - SS

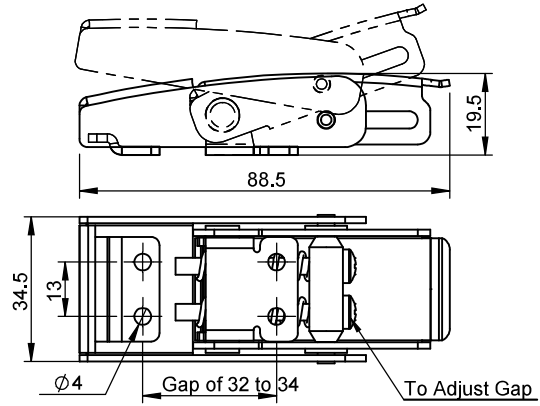
Part Code	Material	Finish	Description
DSNL-8334-SS	SS-304	Electro Polishing	Self Adjustable Draw Latch

- III
- I
- II
- III
- IV
- V
- VI
- VII
- VIII
- IX
- X
- XI
- XII
- XIII
- XIV

LATCHES

Over Centre Latch

MS, SS-304

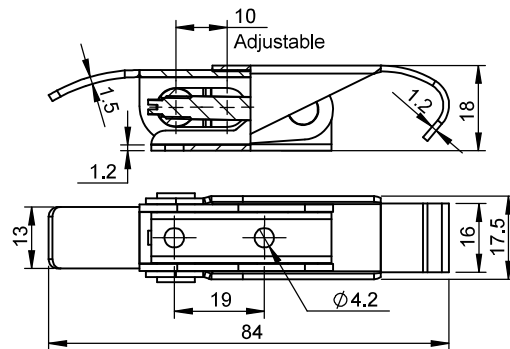


D S N L - 8834

Part Code	Material	Finish	Description
DSNL-8834	MS	Nickel Plated	Adjustable Draw Latch
DSNL-8834-SS	SS-304	Electro Polishing	Adjustable Draw Latch

Over Centre Latch

MS

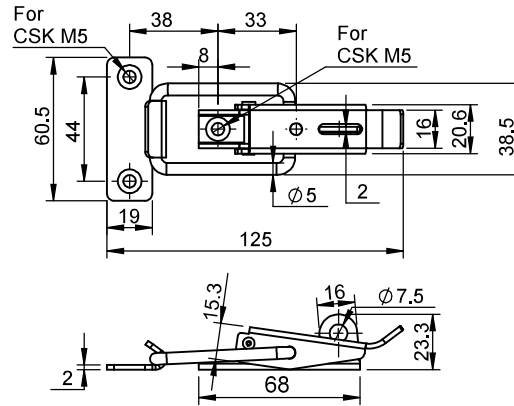


D S N L - 1794

Part Code	Material	Finish	Description
DSNL-1794	MS	Blue Zinc Plated	Adjustable Draw Latch

Over Centre Latch

MS

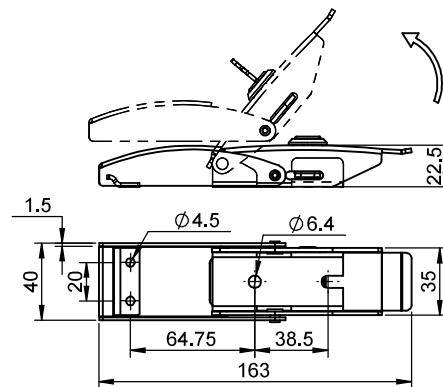


D S N L - L - 6816

Product Code	Material	Finish	Description
DSNL-L-6816	MS	Blue Zinc Plated	Pull Latch

Over Centre Latch

MS, SS-304



D S N L - X - 16240

X	Material	Finish	Description	Key
DSNL-K-16240	MS	Nickel Plated	Draw Latch Lockable	D-2233
DSNL-K-16240-SS	SS-304	Electro Polishing	Draw Latch Lockable	D-2233
DSNL-16240	MS	Nickel Plated	Draw Latch	
DSNL-16240-SS	SS-304	Electro Polishing	Draw Latch	

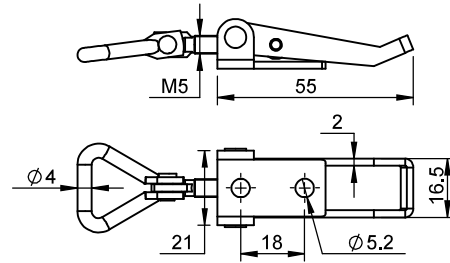
- III
- I
- II
- III
- IV
- V
- VI
- VII
- VIII
- IX
- X
- XI
- XII
- XIII
- XIV

LATCHES

Over Centre Latch

MS, SS-304

- III
- I
- II
- III
- IV
- V
- VI
- VII
- VIII
- IX
- X
- XI
- XII
- XIII
- XIV

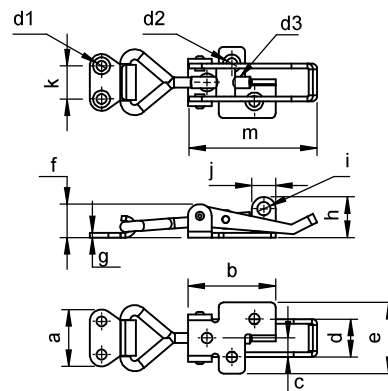


D S N L - 5821

Part Code	Material	Finish	Description
DSNL-5821	MS	Blue Zinc Plated	Adjustable Draw Latch
DSNL-5821-SS	SS-304	Electro Polishing	

Over Centre Latch

MS, SS-304



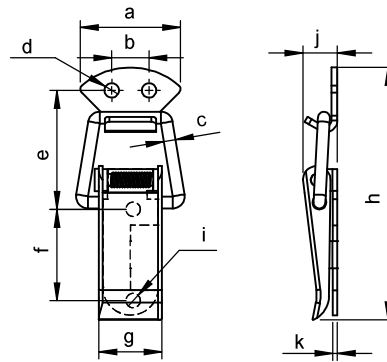
D S N L - X - SS

X	a	b	c	d	d1	d2	d3	e	f	g	h	i	j	k	m
5430	24	37	8	16	CSK M4	CSK M4	M5 x 25	30	14	2	17	Ø5.6	Ø10	14	54
10034	45	60	11	26.6	CSKM5	CSK M8	M8 x40	39.8	23.9	4	26.35	Ø10	Ø14	20	100.4

For 'MS' : DSNL-10034

Over Centre Latch

SS-304



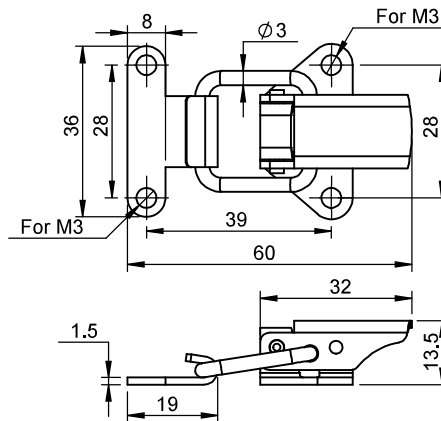
D S N L - X - SS

X	a	b	c	d	e	f	g	h	i	j
5316	24.3	9.5	Ø3	Ø3.7	31.5	23	16.5	64	Ø3.7	8.7
8216		9.45		Ø3.65	59			93		

Finish : Electro Polishing

Over Centre Latch

MS, SS-304



D S N L - X

X	Material	Finish	Description
3215	MS	Blue Zinc Plated	Draw Latch
3215-SS	SS-304	Electro Polishing	

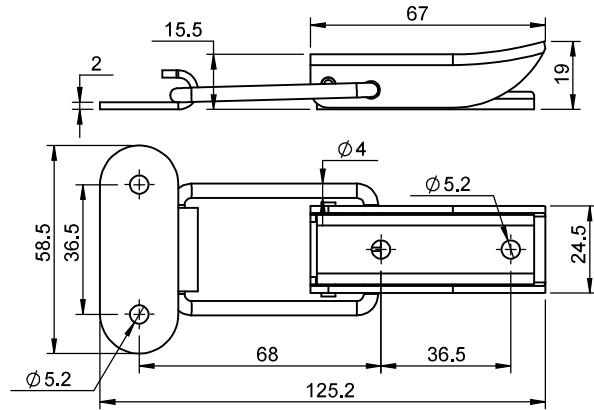
- III
- I
- II
- III
- IV
- V
- VI
- VII
- VIII
- IX
- X
- XI
- XII
- XIII
- XIV

LATCHES

Over Centre Latch

Zinc

- III
- I
- II
- III
- IV
- V
- VI
- VII
- VIII
- IX
- X
- XI
- XII
- XIII
- XIV

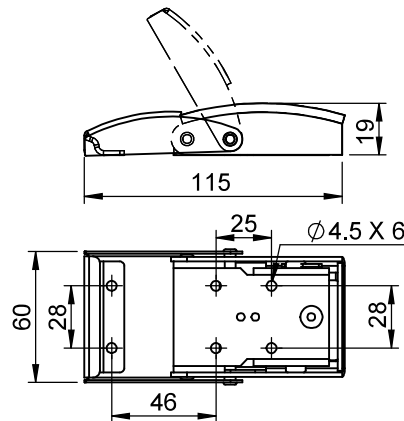


D S N L - 6724

Part Code	Material	Finish	Description
DSNL-6724	MS	Blue Zinc Plated	Draw Latch

Over Centre Latch

Zinc

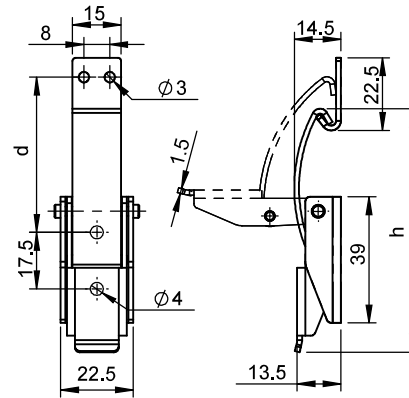


D S N L - L - 11560 - SS

Product Code	Material	Finish	Description
DSNL-L-11560-SS	SS-304	Electro Polishing	Draw Latch With Safety Mechanism

Over Centre Latch

MS, SS-304

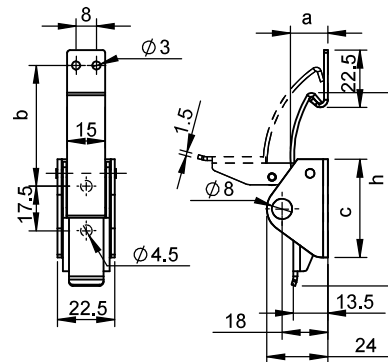


D S N L - X

X	b	h	Finish
5029	48	75	Nickel Plated
5039	60	87	
5029-SS	48	75	Electro Polishing
5039-SS	60	87	

Over Centre Latch

MS, SS-304



D S N L - L - X

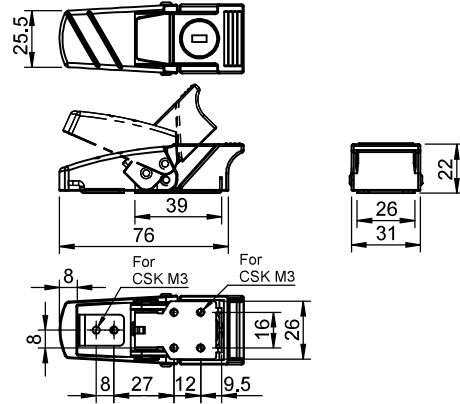
X	a	b	c	h	Finish
5029	15.5	48	39	75	Nickel Plated
5039	14.5	60	38.6	87	
5029-SS	15.5	48	39	75	Electro Polishing
5039-SS	14.5	60	38.6	87	

- III
- I
- II
- III
- IV
- V
- VI
- VII
- VIII
- IX
- X
- XI
- XII
- XIII
- XIV

LATCHES

Over Centre Latch

Zinc

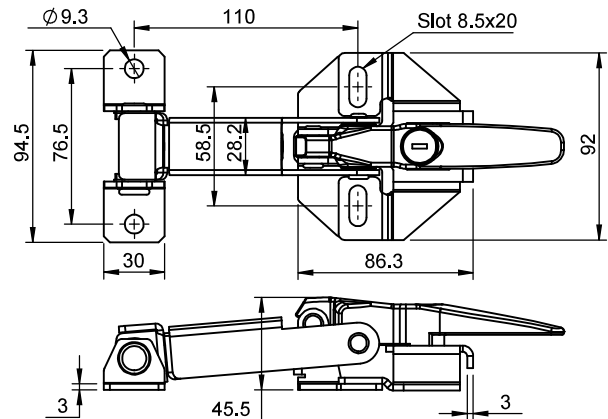


D Z S N L - 3183

Part Code	Material	Finish	Description	Key
DZSNL-3183	Zinc	Black PC	Door Latch	D-1666

Over Central Latch

MS, Zinc

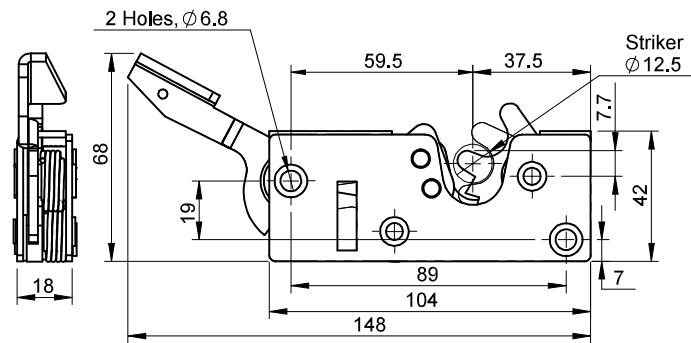


D S N L - X

X	Material	Handle Material	Handle Finish	Finish	Description
76110-PC	MS	Zinc	Black PC	Black PC	Self Adjustable Draw Latch
76110-BZ	MS	Zinc	Black PC	Blue Zinc	

Door Catcher

MS



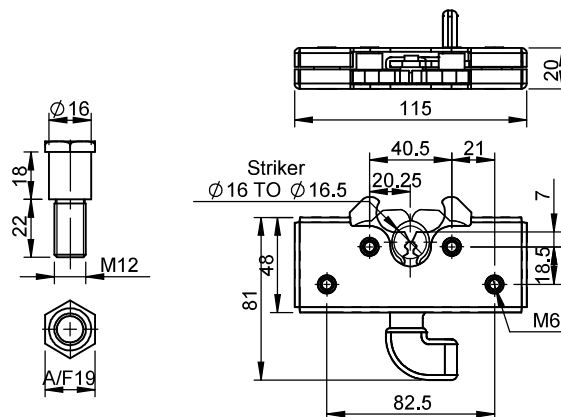
D D C 1 - R

Part Code	Material	Finish	Locking Type	Description
DDC1-R	MS	Blue Zinc Plated	Single Locking	Door Catcher

Screw mounting tightening Torque : 6 Nm

Door Catcher

Zinc



D D C 2 - X

X	Material	Finish	Locking Type	Description
L	MS	Black PC	Double Locking	Door Catcher
R	MS	Black PC	Double Locking	Door Catcher
SB-1	MS	Blue Zinc Plated	-	Striker

“SB-1” Striker Order to be separately

Screw mounting tightening Torque : 6 Nm

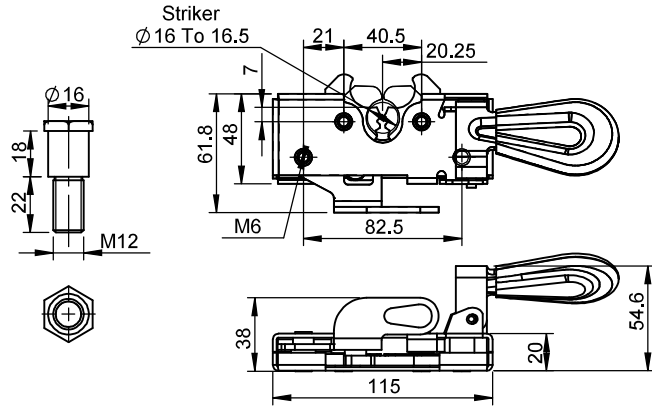
- III
- I
- II
- III
- IV
- V
- VI
- VII
- VIII
- IX
- X
- XI
- XII
- XIII
- XIV

LATCHES

Door Catcher

MS

- III
- I
- II
- III
- IV
- V
- VI
- VII
- VIII
- IX
- X
- XI
- XII
- XIII
- XIV



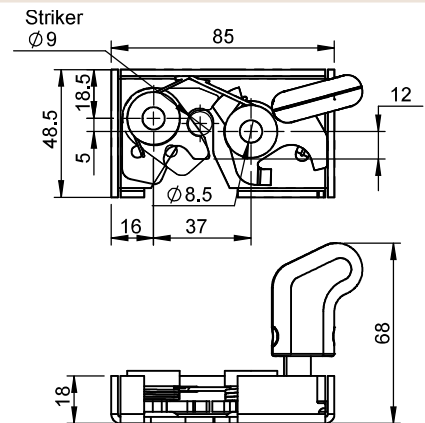
D D C 3 - X

<input checked="" type="checkbox"/>	Material	Finish	Locking Type	Description
L	MS	Blue Zinc Plated	Double Locking	Door Catcher
R	MS			
SB-1	MS		-	Striker

"SB-1" Striker Order to be separately
Screw mounting tightening Torque : 6 Nm

Door Catcher

MS



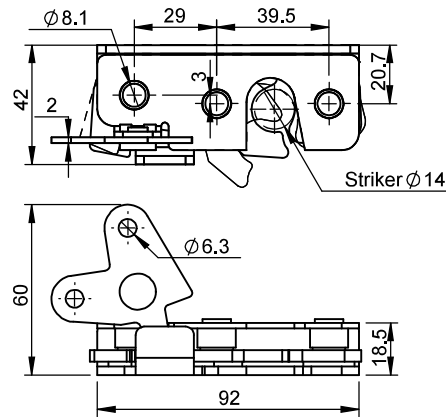
D D C 4 - X

<input checked="" type="checkbox"/>	Material	Finish	Locking Type	Description
L	MS	Blue Zinc Plated	Single Locking	Door Catcher
R	MS			
MH	MS			

Screw mounting tightening Torque : 6 Nm

Door Catcher

MS



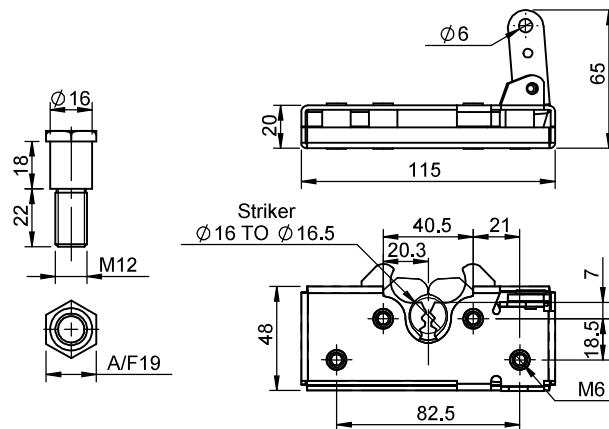
D D C 5 - L

Product Code	Material	Finish	Locking Type	Description
DDC5-L	MS	Blue Zinc Plated	Single Locking	Door Catcher

Screw mounting tightening Torque : 6 Nm

Door Catcher

MS



D D C 6 - X

<input checked="" type="checkbox"/>	Material	Finish	Locking Type	Description	Torque
L	MS	Blue Zinc Plated	Double Locking	Door Catcher	6 N/m
R	MS			Door Catcher	
SB-1	MS		-	Striker	-

“SB-1” Striker Order to be separately

Screw mounting tightening Torque : 6 Nm

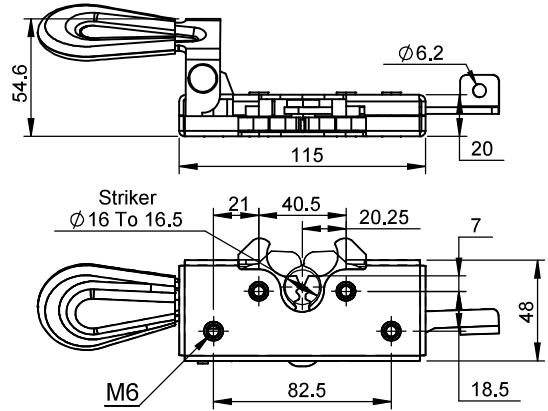
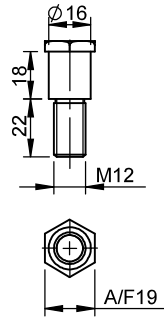
- III
- I
- II
- III
- IV
- V
- VI
- VII
- VIII
- IX
- X
- XI
- XII
- XIII
- XIV

LATCHES

Door Catcher

MS

- III
- I
- II
- III
- IV
- V
- VI
- VII
- VIII
- IX
- X
- XI
- XII
- XIII
- XIV



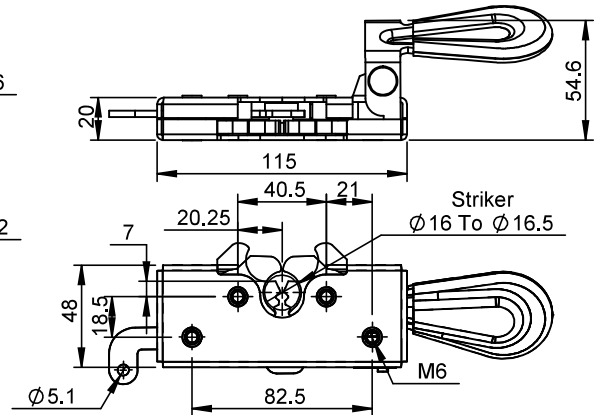
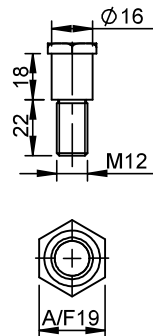
D D C 7 - X

<input checked="" type="checkbox"/>	Material	Finish	Locking Type	Description
L	MS	Blue Zinc Plated	Double Locking	Door Catcher
R	MS			
SB-1	MS		-	Striker

"SB-1" Striker Order to be separately
Screw mounting tightening Torque : 6 Nm

Door Catcher

MS



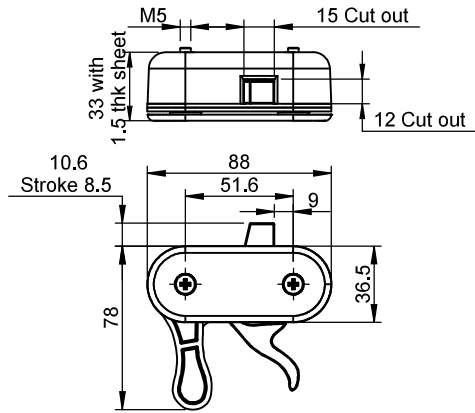
D D C 8 - X

<input checked="" type="checkbox"/>	Material	Finish	Locking Type	Description
L	MS	Blue Zinc Plated	Double Locking	Door Catcher
R	MS			
SB-1	MS		-	Striker

"SB-1" Striker Order to be separately
Screw mounting tightening Torque : 6 Nm

Window Latch

Polyamide

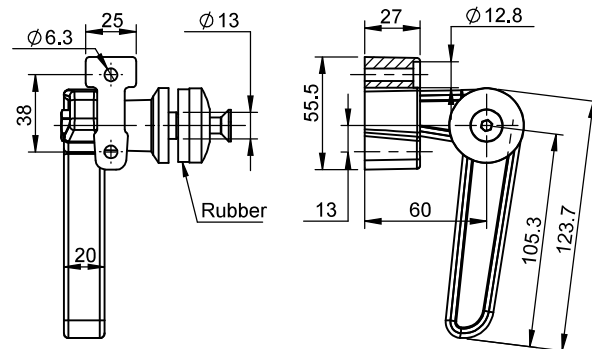
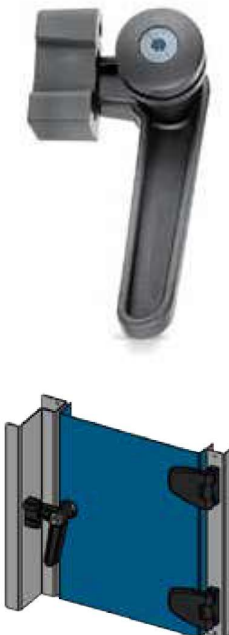


D P W C 1 - X

X	Material	Release Type	Description
L	Polyamide	Single Release	Window Latch
R			

Window Latch

Polyamide



D P W C 2

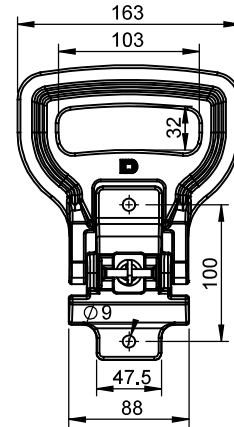
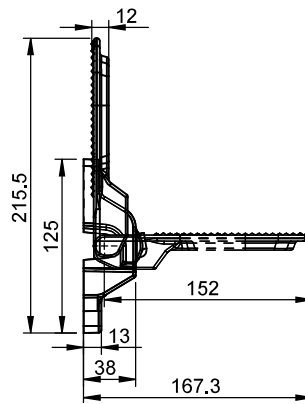
Product Code	Material	Description
DPWC-2	Polyamide	Window Latch

- III
- I
- II
- III
- IV
- V
- VI
- VII
- VIII
- IX
- X
- XI
- XII
- XIII
- XIV

LATCHES

Step Handle

SS-304

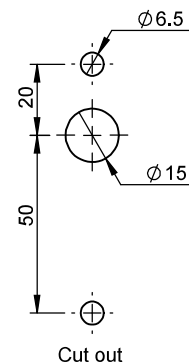
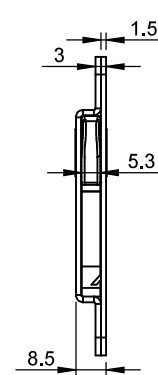
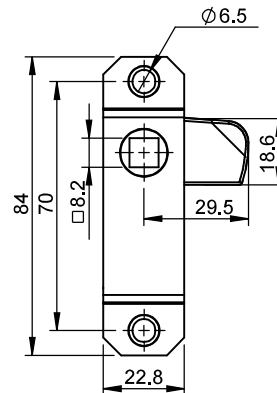


D S L S - 167

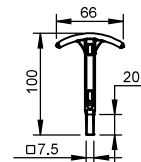
Product Code	Material Type	Finish	Description
DSLS-167	SS-304	Electro Polishing	Step

Flat Latch

MS



D C L J 2 - X



<input checked="" type="checkbox"/>	Body Material	Cam Material	Finish	Description
L	MS	Zinc	Blue Zinc Plated	Flat Latch
R				
DRK	Zinc	-	Raw	Key

- III
- I
- II
- III
- IV
- V
- VI
- VII
- VIII
- IX
- X
- XI
- XII
- XIII
- XIV

