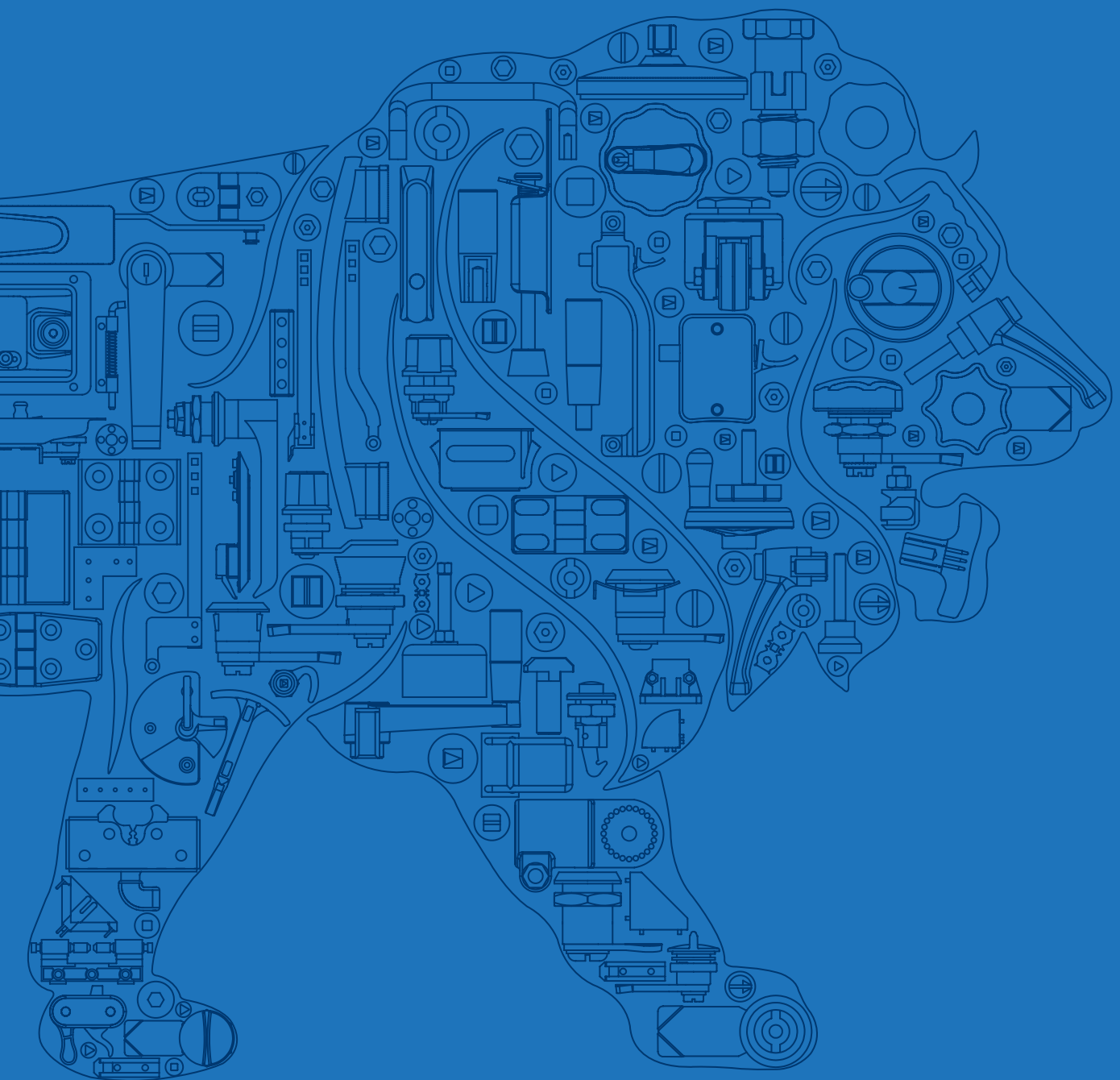


**D** darshana®



Made in India  Made for You



# WHO WE ARE

India's Largest and Most Trusted Manufacturer of  
Access Hardware and Machine Components

Founded in  
**1982**

Highly focused on  
**INDIA'S**  
Strong Machine  
Building Industry

Engineering

Tooling

Manufacturing

Sales

Two Locations in  
**PUNE**

120,000 sq. ft.  
(11,000 sq. m.)  
**AREA**

## OVER 350

People Committed to Customer Satisfaction

## OVER 20 DEALERS

in India and reliable partners overseas to provide end to end  
integration of parts in customer's designs

## OVER 90%

of components used are

## MADE-IN-HOUSE

Ensures control of quality and delivery

### OUR PRESENCE IN VARIOUS SECTORS



Agriculture



Airline Industry



Automation



Automobile



Dairy



Defence



Earthmoving



Electric Panels



Food



Generator



Hospital Essentials



HVAC



Interior



Kitchen Equipment



Machine Building



Marine



Medical



Office Furniture



Pharma



Printing & Packing



Railways



Renewable Energy



Telecom



Waste Management

# OUR GLOBAL PRESENCE

## India

- Ahmedabad
- Aurangabad
- Bengaluru
- Chennai
- Coimbatore
- Delhi
- Goa
- Hyderabad
- Indore
- Kolhapur
- Mumbai
- Nagpur
- Nashik
- Noida
- Pune
- Punjab
- Rajkot
- Surat
- Vadodara

## International

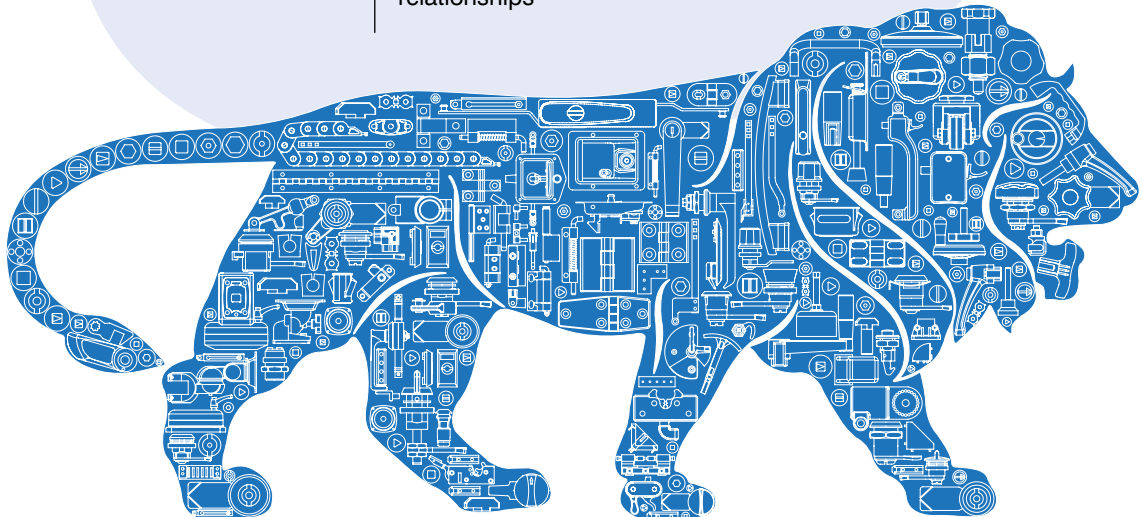
- Australia
- Canada
- Egypt
- France
- Iceland
- Ireland
- Israel
- Italy
- Kenya
- Kuwait
- Lebanon
- Malaysia
- Netherlands
- New Zealand
- Nigeria
- Oman
- Philippines
- Poland
- Saudi Arabia
- South Africa
- Spain
- Sri Lanka
- Thailand
- UAE
- United Kingdom
- Yemen
- Zambia
- USA

## Vision

To be the leading trusted source of engineered machine components.

## Mission

To create continuous growth opportunities through value driven product designs and operations.  
We will achieve this growth through well engineered designs that ensure product reliability and efficient manufacturing operations that are committed to quality, consistency, and cost management  
Customer connectivity that creates long-term relationships



Made in India  Made for You



## Primary Processes in Facility 1

- Zinc Die Casting
- Injection Molding
- Powder Coating
- Laser Cutting
- CNC Machining
- Gasketing
- Key Making
- Robotic Welding
- Robotic Buffing
- Automated Assembly Lines

ISO CERTIFIED


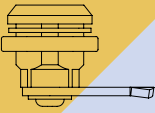
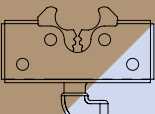
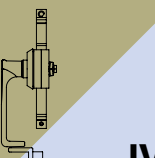
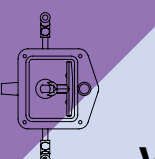

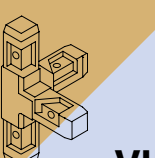
9001 : 15 | 14001 : 15 | 45001 : 15

## Primary Processes in Facility 2

- Stamping Unit
- Riveting Line
- Secondary Finishing Lines
- Assembly  
(Sheet Metal Components)
- Space for expansion



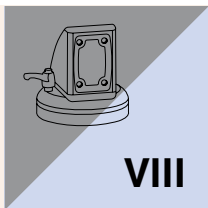
# Product Categories

Colour coding for Category identification	Product Category	Category Sub Colour Shade	Page No.
 Category Number I	<b>HANDLES</b>		008 to 083
 Category Number II	<b>LOCKS</b>		084 to 119
 Category Number III	<b>LATCHES</b>		120 to 145
 Category Number IV	<b>MULTI-POINT LOCKS</b>		146 to 179
 Category Number V	<b>CANOPY LOCKS</b>		180 to 195
 Category Number VI	<b>HINGES</b>		196 to 267
 Category Number VII	<b>CONVEYOR COMPONENTS</b>		268 to 291

# Part Code Configurator

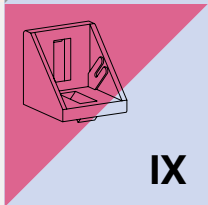


For building the **Part Code** please fill the variables that are outlined values from the table referring the drawings.



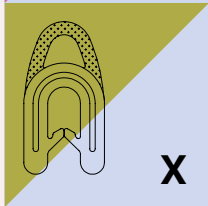
## SUPPORT ARM SYSTEM

292 to 323



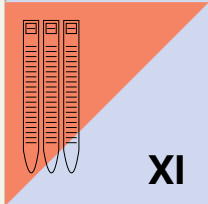
## ALUMINIUM SECTIONS & ACCESSORIES

324 to 343



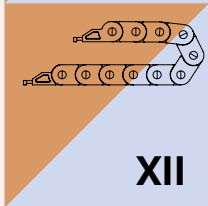
## GASKETS

344 to 349



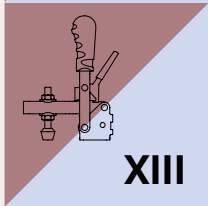
## CONDUIT ACCESSORIES & CABLE TIES

350 to 355



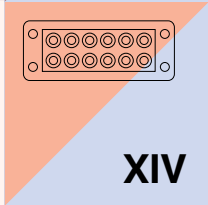
## DRAG CHAINS

356 to 361



## TOGGLE CLAMPS

362 to 379



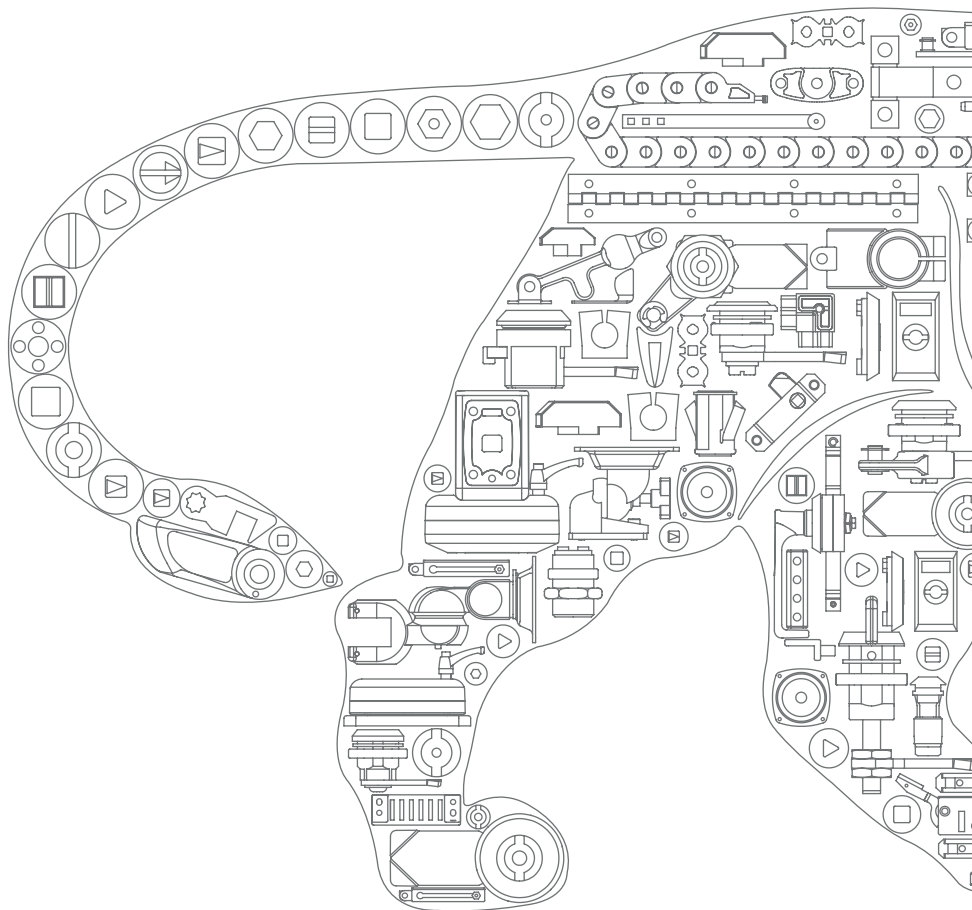
## CABLE MANAGEMENT SYSTEM

380 to 385

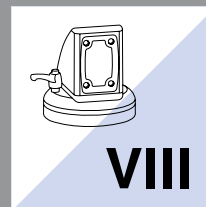
# Part Code Index

Product Name	Material	Page
Flexible Pipe Mount	Aluminium	294
		295
	MS	296
	Zinc, MS	297
	MS	
	Zinc, MS	298
	Zinc, MS	298

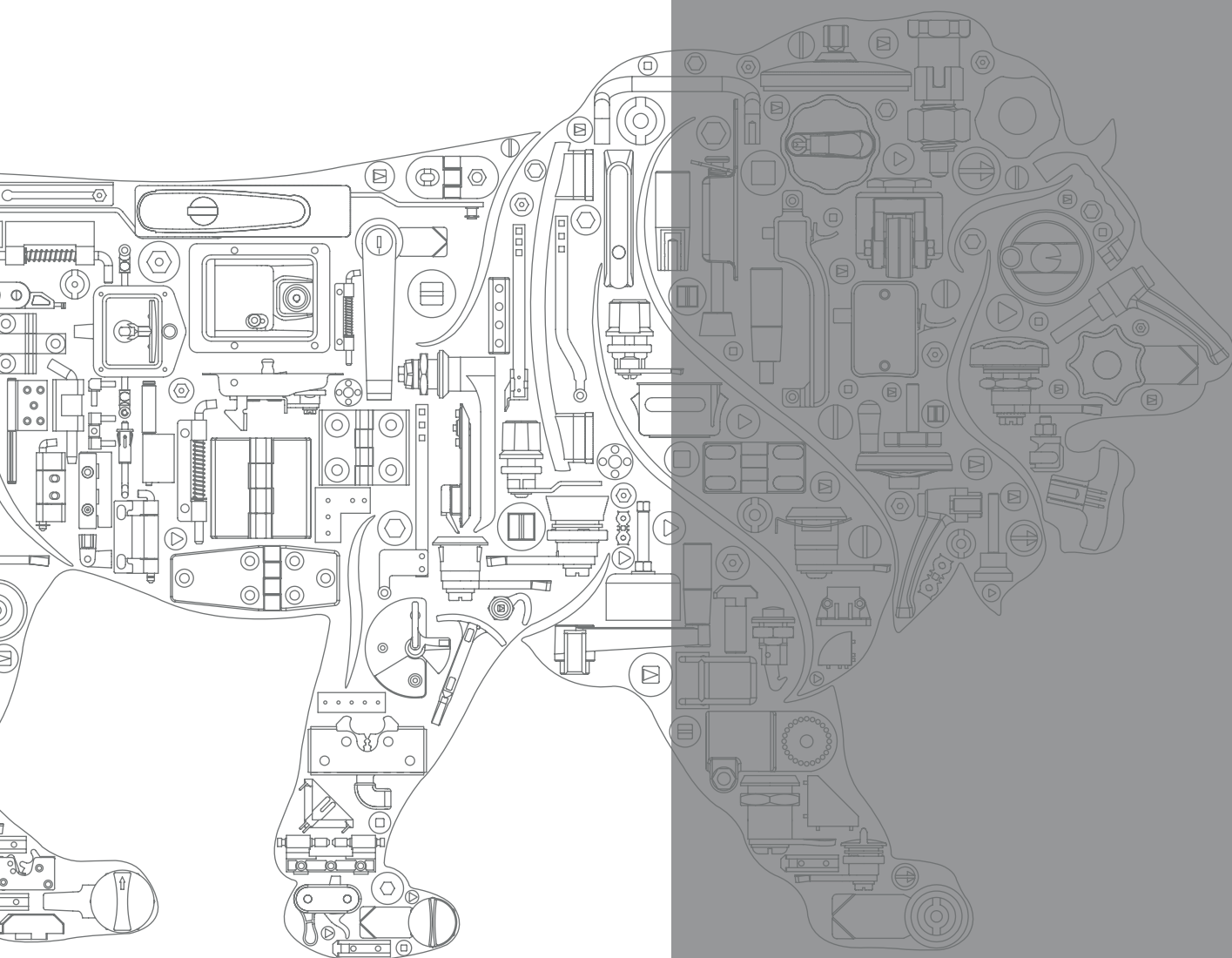
Product Name	Material	Page	
Support Arm	Aluminium	299	
		300	
		301	
		302	
		303	
		304	
		305	
		306	
		Stainless Steel	307
			308
		Aluminium	309
	310		
	311		
	312		
	313		
	314		
	315		
	316		
	317		
	318		
	319		
	320		
	321		
322			
Zinc	323		







# SUPPORT ARM SYSTEM



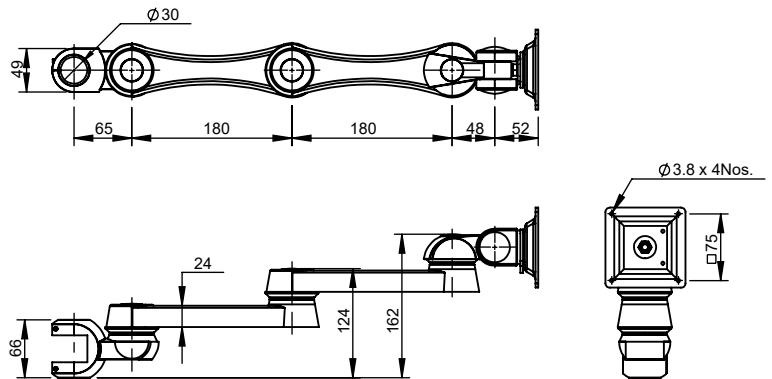
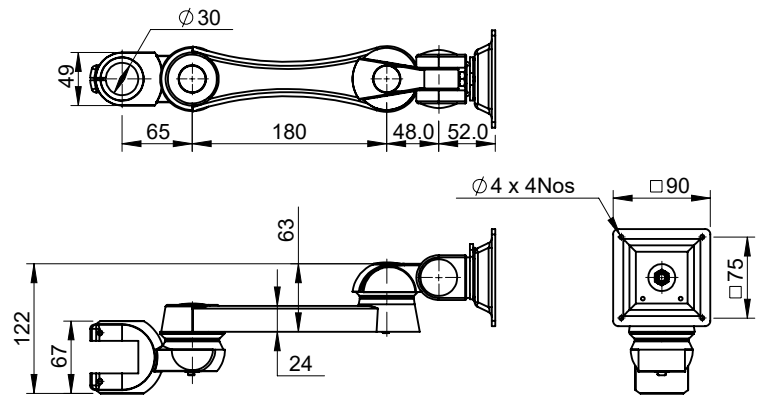
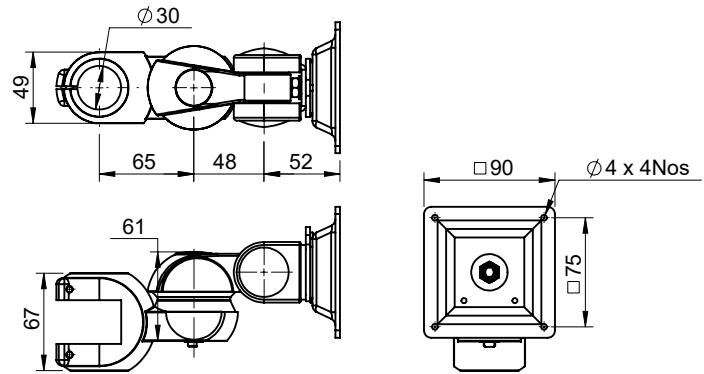
Made in India  Made for You

# SUPPORT ARM SYSTEM

Flexible Pipe Mount

Aluminium

VIII



**D F M A - X - B - C**

<b>X</b>	Body Material	Body Finish	Plate Material	Plate Finish	Total Length	LC (kg)
270	Aluminium	SPC	MS	Black PC	270	15
350					350	10
530					530	8

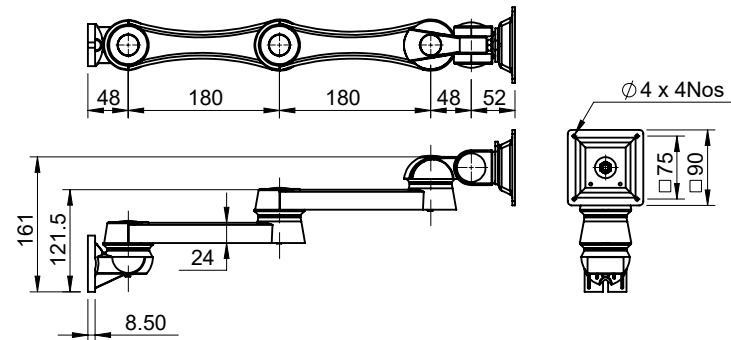
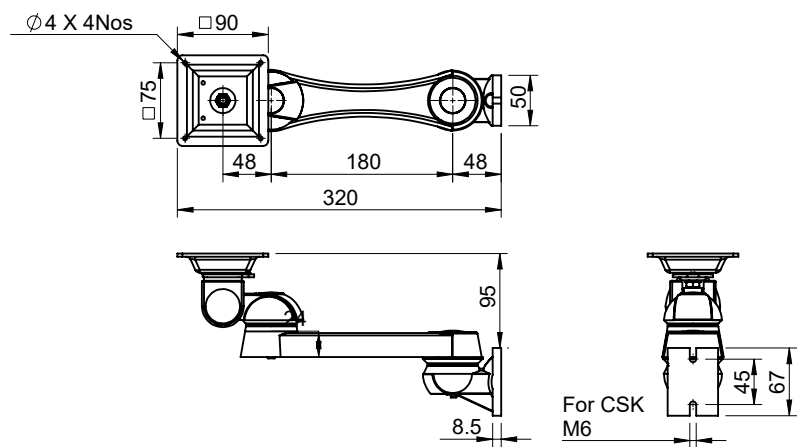
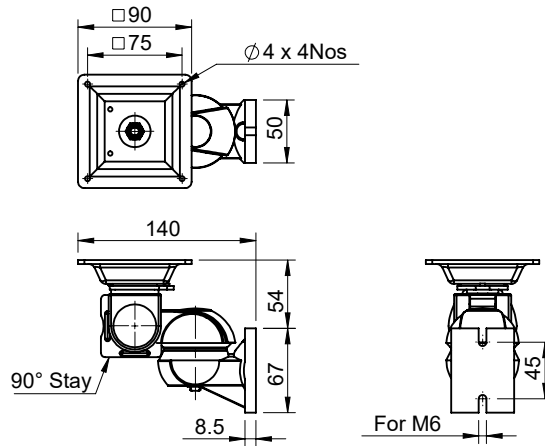
Replace "B" with "90S" for 90° Stopper for the Mounting Plate

Replace "C" with "DC115" for 115mm mounting plate for heavy monitors

# SUPPORT ARM SYSTEM

Flexible Wall Mount

Aluminium



**D F W M 1 - X - B - C**

<b>X</b>	Body Material	Body Finish	Plate Material	Plate Finish	Total Length	LC (kg)
270	Aluminium	SPC	MS	Black PC	270	15
350					350	10
530					530	8

Replace "B" with "90S" for 90° Stopper for the Mounting Plate

Replace "C" with "DC115" for 115mm mounting plate for heavy monitors

VIII



I



II



III



IV



V



VI



VII



VIII



IX



X



XI



XII



XIII

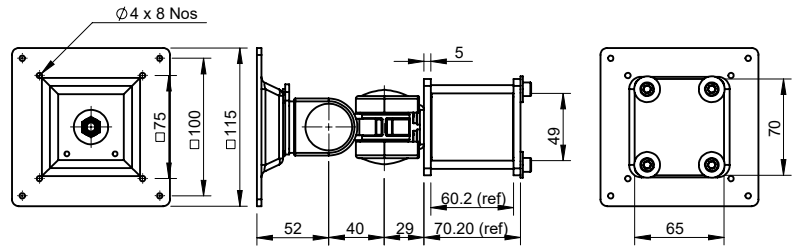


XIV

# SUPPORT ARM SYSTEM

## Flexible Pipe Mount

MS

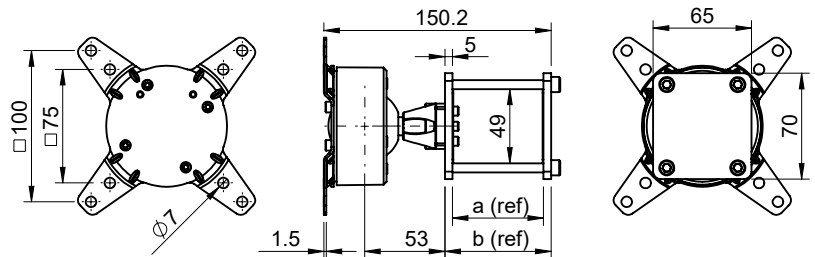


**D F P M - 140 - DC115**

Body Material	Body Finish	Plate Material	Plate Finish	LC (kg)
MS	Black PC	MS	Black PC	15

## Flexible Pipe Mount

MS



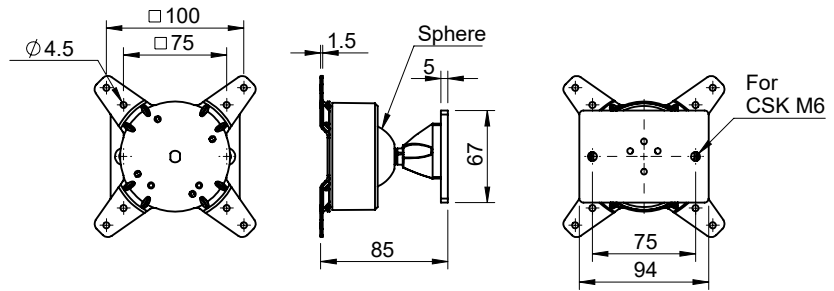
**D F U P M - 140 - D**

<b>D</b>	a	b	Body Material	Body Finish	Plate Material	Plate Finish	LC (kg)
	60.2	70.2	MS	Black PC	MS	Black PC	15
<b>55</b>	55.2	65.2					
<b>80</b>	80.2	90.2					

# SUPPORT ARM SYSTEM

## Flexible Wall Mount

Zinc, MS

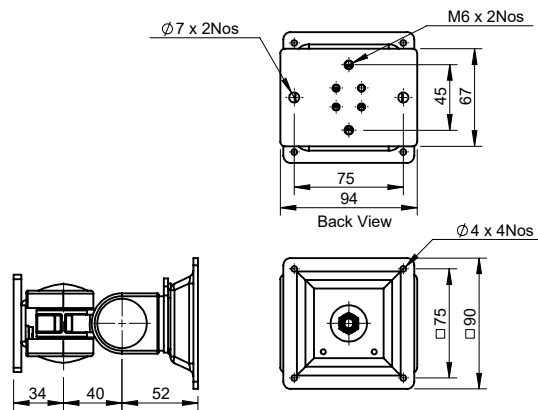


**D F U W M - 140**

Body Material	Body Finish	Plate Material	Plate Finish	LC (kg)
Zinc	Black PC	MS	Black PC	18
Replace "C" with "DC115" for 115mm mounting plate for heavy monitors				
Adjustable Ball Joint grip provides extra rigidity				

## Flexible Wall Mount

MS



**D F W M - 140 - C**

Body Material	Body Finish	Plate Material	Plate Finish	LC (kg)
MS	Black PC	MS	Black PC	15
Replace "C" with "DC115" for 115mm mounting plate for heavy monitors				

VIII



I



II



III



IV



V



VI



VII



VIII



IX



X



XI



XII



XIII



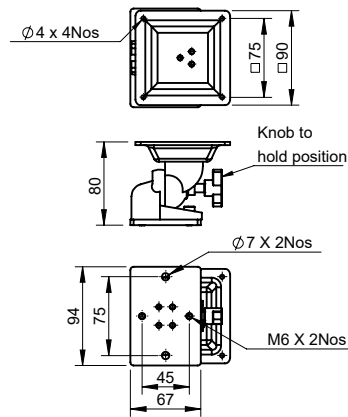
XIV



# SUPPORT ARM SYSTEM

## Flexible Wall Mount

Zinc, MS



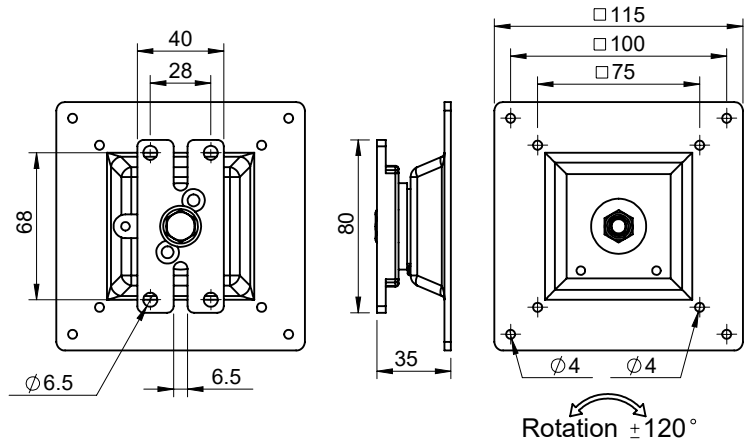
**D F W M - 75 - B - C**

Body Material	Body Finish	Plate Material	Plate Finish	LC (kg)
Zinc	Black PC	MS	Black PC	15

Replace "C" with "DC115" for 115mm mounting plate for heavy monitors

## Flexible Wall Mount

Zinc, MS



**D F M V - 4080 - C**

Body Material	Body Finish	Plate Material	Plate Finish	LC (kg)
Zinc	Black PC	MS	Black PC	15

Replace "C" with "DC115" for 115mm mounting plate for heavy monitors

VIII



I



II



III



IV



V



VI



VII



VIII



IX



X



XI



XII



XIII

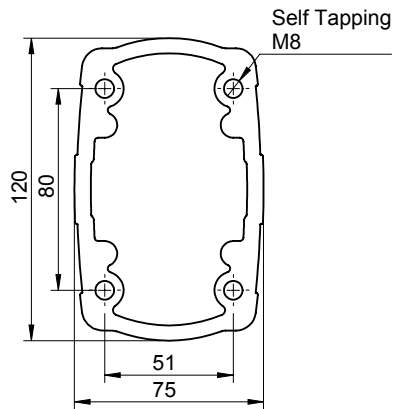
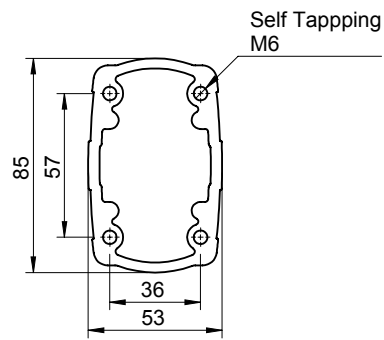
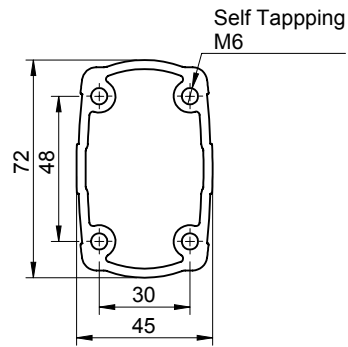


XIV

# SUPPORT ARM SYSTEM

Support Arm

Aluminium

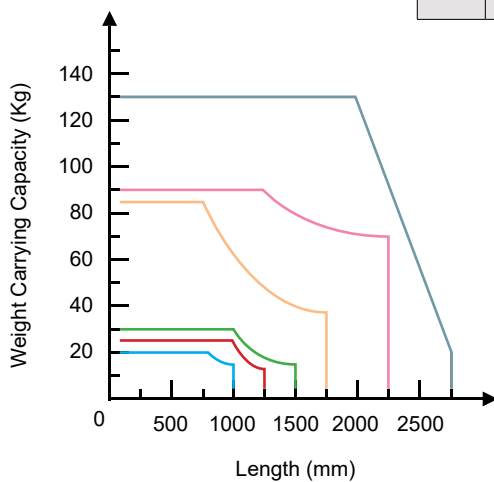


**X** Series

**4572**

**5385**

**75120**



### SERIES

- 75120
- 5385
- 4572
- 6080
- 4565
- 48

### Note

Support Arm System Should be mounted on a rigid base.  
Section to be cut & milled at 90°.

VIII



I



II



III



IV



V



VI



VII



VIII



IX



X



XI



XII



XIII



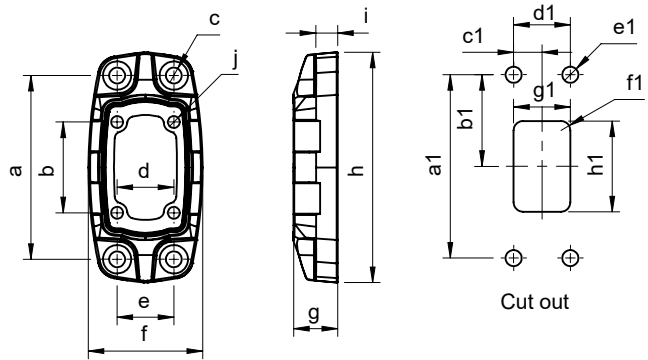
XIV



# SUPPORT ARM SYSTEM

Support Arm

Aluminium



**D C F - X**

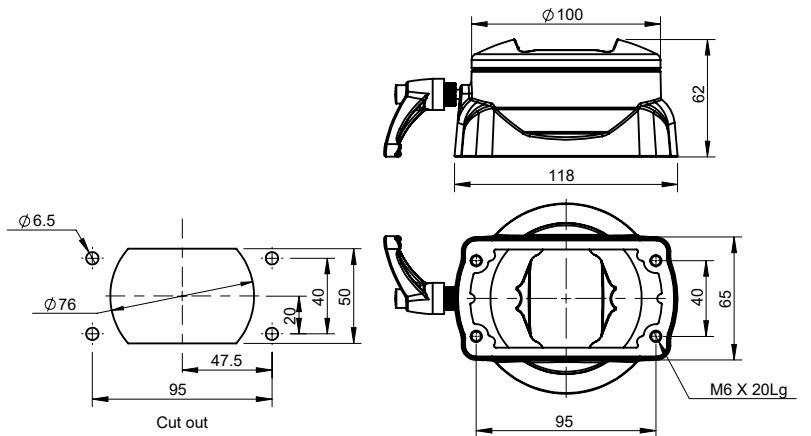
<input checked="" type="checkbox"/>	a	b	c	d	e	f	g	h	i	j	a1	b1	c1	d1	e1	f1	g1	h1
<b>4572</b>	97	48	Ø8.4	30	30	60.4	23.2	122	11	Ø6.5	97	48.5	15	30	Ø8.5	R5	30	48
<b>5385</b>	115	59	Ø9	36	35	71.4	27.8	115	13.7	SL 6.3 x 8.3	115	57.5	17.5	35			35	60
<b>75120</b>	162	81.5	Ø13	51	50	100.7	39	203	19	SL8.6 x 117.7	162	81	25	50			Ø13	50

Finish : RAL-7035

Additional screws are provided for adjusting sag

Support Arm

Aluminium



**D C R - AV - 5385**

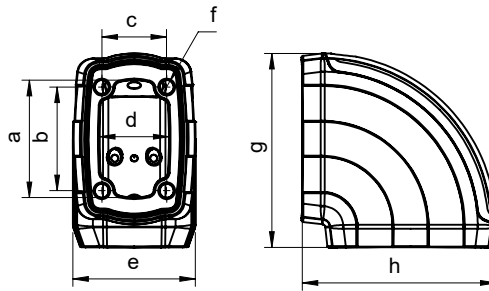
Body Material	Body Finish
Aluminium	RAL-7035
Mount for HMI Enclosures	



# SUPPORT ARM SYSTEM

## Support Arm

Aluminium



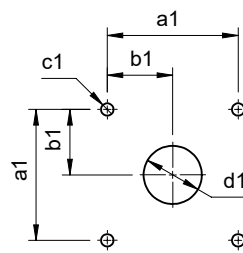
X	a	b	c	d	e	f	g	h
4572	54	48	30	32	57	Ø6.3	90	90
5385	64	59	36	38	67	SL 6.3 x 8.3	106.3	106.3
75120	90	81.5	51	53	94.6	SL8.6 x 11.7	150	150

Finish : RAL-7035

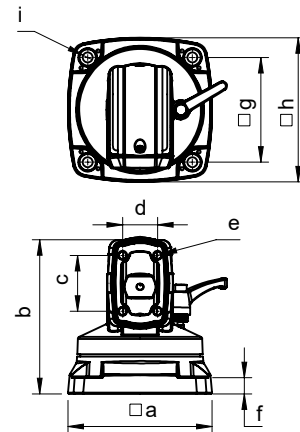
Additional screws are provided for adjusting sag

## Support Arm

Aluminium



Cut out



X	a	b	c	d	e	f	g	h	i	a1	b1	c1	d1
4572	124	133	48	30	Ø6.3	14	90	124	Ø8.5	90	45	Ø8.5	Ø40
5385	138.6	153.5	59	36	SL 6.3 X 8.3	15.6	102	138.6	Ø9.2	102	51	Ø9.2	Ø45
75120	195.7	214	81.5	51	SL 8.6 X 11.7	22	144	195.7	Ø13	144	72	Ø13	Ø60

Finish : RAL-7035

Additional screws are provided for adjusting sag

VIII

I

II

III

IV

V

VI

VII

VIII

IX

X

XI

XII

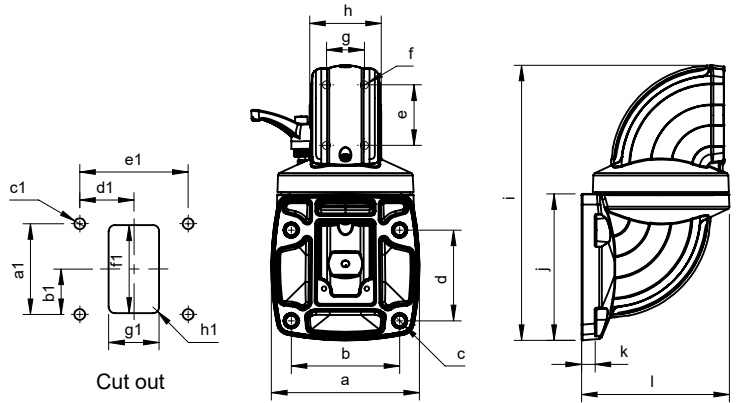
XIII

XIV

# SUPPORT ARM SYSTEM

Support Arm

Aluminium



**D C W R E - X**

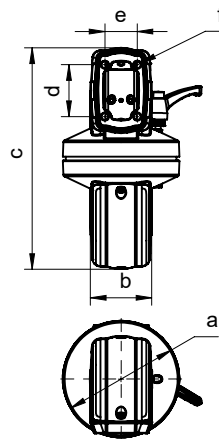
<input checked="" type="checkbox"/>	a	b	c	d	e	f	g	h	i	j	k	l	a1	b1	c1	d1	e1	f1	g1	h1
<b>4572</b>	117.5	86	Ø8.3	72	48	Ø6.3	30	57	218	116.5	11	117.5	72	36	Ø8.5	43	86	70	40	
<b>5385</b>	139	102	Ø9.2	85	59	SL 6.3 X 8.3	36	67	255.5	137.5	12.8	135	85	42.5	Ø9.2	51	102	90	45	R5
<b>75120</b>	195.7	144	Ø13	120	81.5	SL 8.6 X 11.7	51	94.6	356.6	193.6	17.6	191.6	120	60	Ø13	72	144	110	65	

Finish : RAL-7035

Additional screws are provided for adjusting sag

Support Arm

Aluminium



**D C P R E - X**

<input checked="" type="checkbox"/>	a	b	c	d	e	f
<b>4572</b>	Ø108	57	205	48	30	Ø6.3
<b>5385</b>	Ø120	67	234	59	36	SL 6.3 X 8.3
<b>75120</b>	Ø168	94.6	328.5	81.5	51	SL8.6 X 11.7

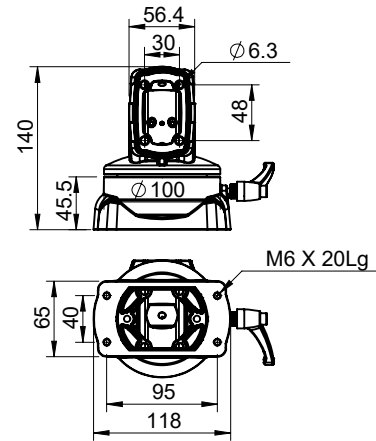
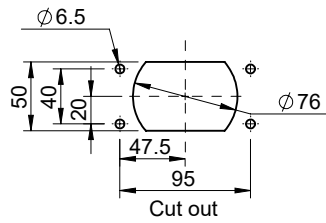
Finish : RAL-7035

Additional screws are provided for adjusting sag

# SUPPORT ARM SYSTEM

## Support Arm

Aluminium

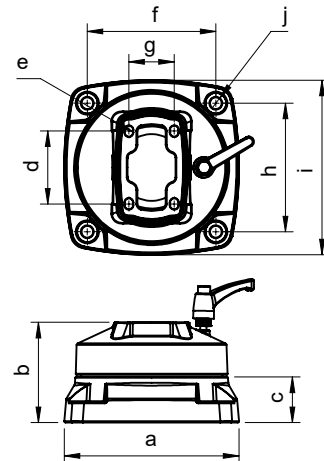
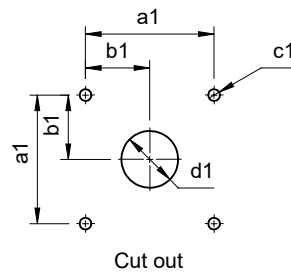


**D C R E - A V - 4572**

Body Material	Body Finish
Aluminium	RAL-7035
Mount for HMI Enclosures	

## Support Arm

Aluminium



**D C F R - X**

<input checked="" type="checkbox"/>	a	b	c	d	e	f	g	h	i	j	a1	b1	c1	d1
<b>5385</b>	139	79.5	36	58	SL 6.3	102	36	102	139	Ø9.2	144	72	Ø13	Ø60
<b>75120</b>	195.7	105.3		81.5	X 8.3	144	51	144	195.7	Ø13				
Finish : RAL-7035														
Additional screws are provided for adjusting sag														

VIII



I



II



III



IV



V



VI



VII



VIII



IX



X



XI



XII



XIII



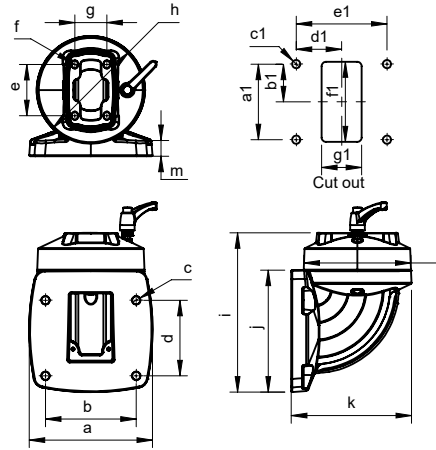
XIV



# SUPPORT ARM SYSTEM

Support Arm

Aluminium



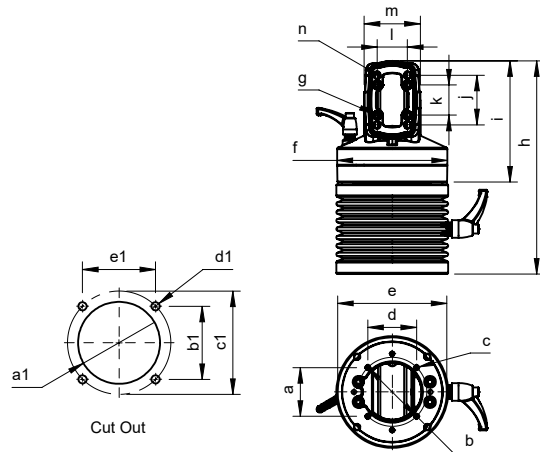
**D C W R - X**

<b>X</b>	a	b	c	d	e	f	g	h	i	j	k	l	m	a1	b1	c1	d1	e1	f1	g1
<b>5385</b>	139	102	Ø9.2	85	58	SL 6.3 x 8.3	36	Ø122	179	137	135	Ø120	17.5	85	42.5	Ø9.2	51	102	90	45
<b>75120</b>	195.7	144	Ø13	120	81.5	SL 8.6 x 11.7	51	Ø173	248	193.6	191.5	Ø170	18	120	60	Ø13	72	144	110	65

Finish : RAL-7035  
Additional screws are provided for adjusting sag

Support Arm

Aluminium



**D C R E T - X**

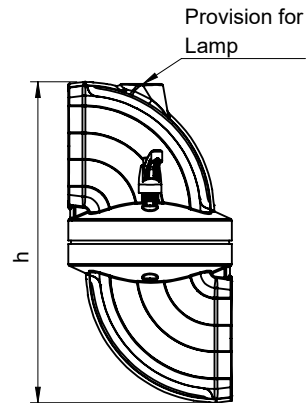
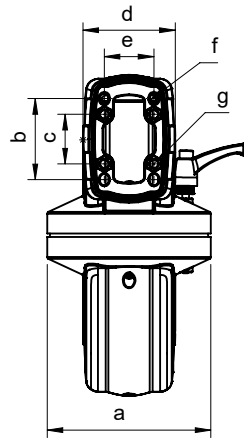
<b>X</b>	a	b	c	d	e	f	g	h	i	j	k	l	m	n	a1	b1	c1	d1	e1
<b>5385</b>	58	Ø82	M6 X13	58	Ø130	Ø131	Ø6.5	253.7	144	59	36	36	67	SL 6.3 X 8.3	Ø65	58	Ø82	Ø6.5	58
<b>75120</b>							Ø8.6	279.7	171	81.5	51	51	94	SL 8.6 X 11.6					

Finish : RAL-7035  
Additional screws are provided for adjusting sag

# SUPPORT ARM SYSTEM

## Support Arm

Aluminium



**D C P R E H - X - A**

**A** Lamp Colours  
**3** 3-Floor Lamp  
**5** 5-Floor Lamp

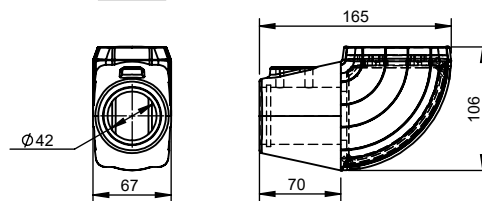
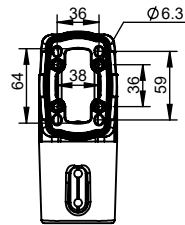
X	a	b	c	d	e	f	g	h
5385	Ø120	59	36	67	36	SL 6.3 X 8.3	Ø6.5	234
75120	Ø168	81.5	51	94.6	51	SL 8.6 X 11.7	Ø8.6	328.4

Finish : RAL-7035

Additional screws are provided for adjusting sag

## Support Arm

Aluminium



**D C E P J - 4572 - 48**

Body Material	Body Finish
Aluminium	RAL-7035
Extension for Pipe Type Support Arm	

VIII

I

II

III

IV

V

VI

VII

VIII

IX

X

XI

XII

XIII

XIV

XV

XVI

XVII

XVIII

XIX

XX

XXI

XXII

XXIII

XXIV

XXV

XXVI

XXVII

XXVIII

XXIX

XXX

XXXI

XXXII

XXXIII

XXXIV

XXXV

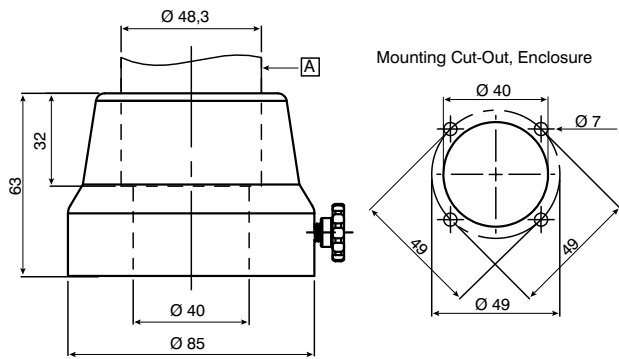
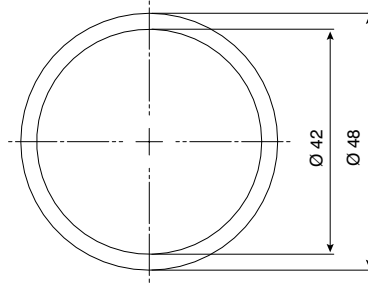
# SUPPORT ARM SYSTEM

Support Arm

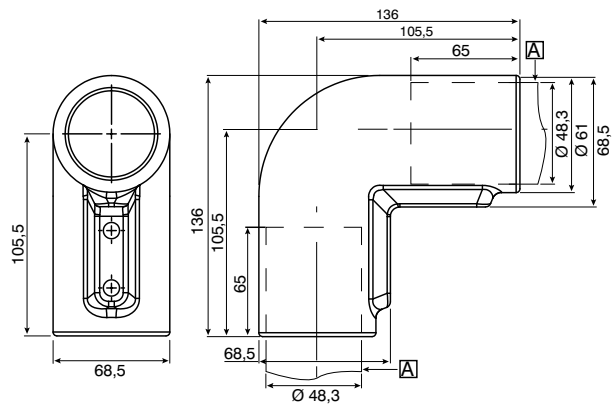
Stainless Steel

VIII

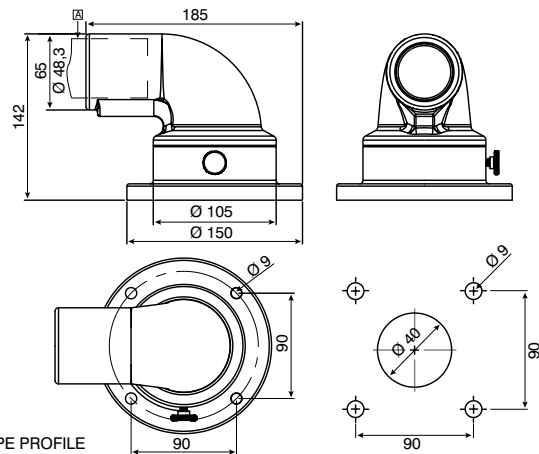
**NEW  
PRODUCT  
2024**



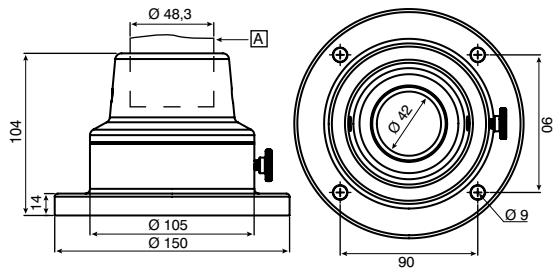
A PIPE PROFILE



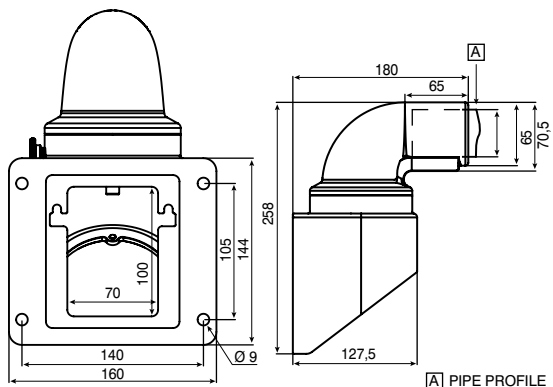
A PIPE PROFILE



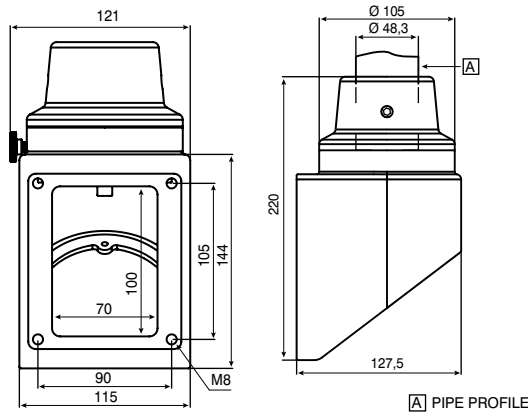
A PIPE PROFILE



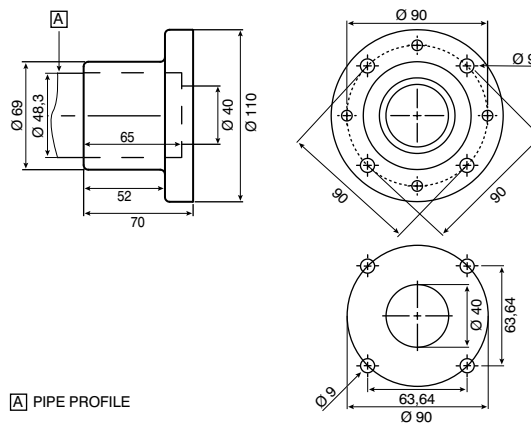
A PIPE PROFILE



A PIPE PROFILE



A PIPE PROFILE



A PIPE PROFILE

VIII



I



II



III



IV



V



VI



VII



VIII



IX



X



XI



XII



XIII



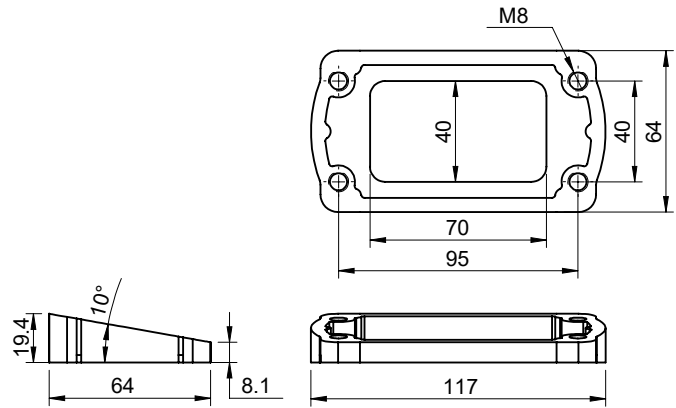
XIV



# SUPPORT ARM SYSTEM

Support Arm

Aluminium

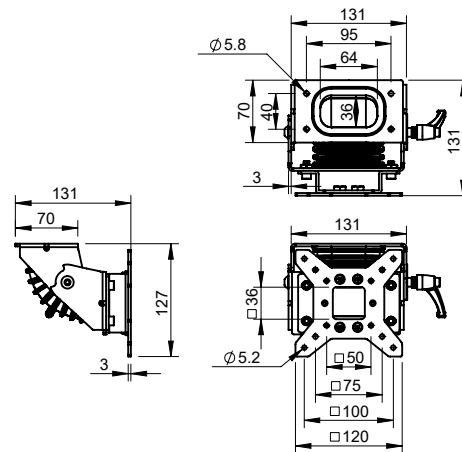


**D C R A - 5385**

Body Material	Body Finish
Aluminium	RAL-7035
Mount for HMI Enclosures	

Support Arm

Aluminium



**D T A - D C - 120**

Body Material	Body Finish
Aluminium	RAL-7035
Mount for HMI Enclosures	

VIII



I



II



III



IV



V



VI



VII



VIII



IX



X



XI



XII



XIII



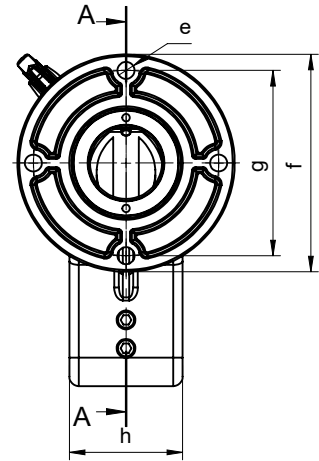
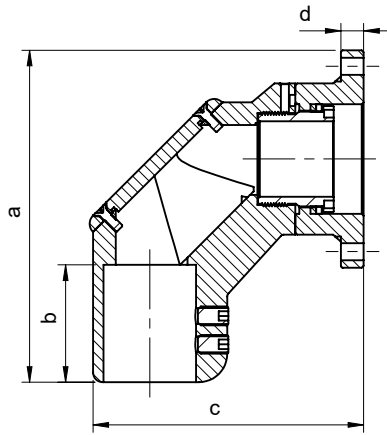
XIV



# SUPPORT ARM SYSTEM

## Support Arm

Aluminium



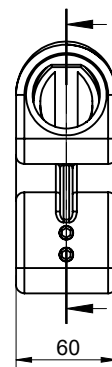
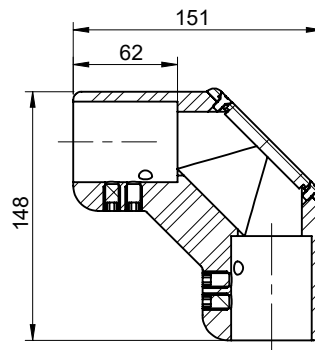
**D C X R E - 48**

- X** Mounting Style  
 - Plain Bracket  
**F** Flange Bracket

a	b	c	d	e	f	g	h
175.5	62	143	12	Ø9	Ø115	98	60
158	62	131		M5 x 8lg	Ø80	65	

## Support Arm

Aluminium



**D C E - 48**

Body Material	Body Finish
Aluminium	Gray PC

VIII



I



II



III



IV



V



VI



VII



VIII



IX



X



XI



XII



XIII



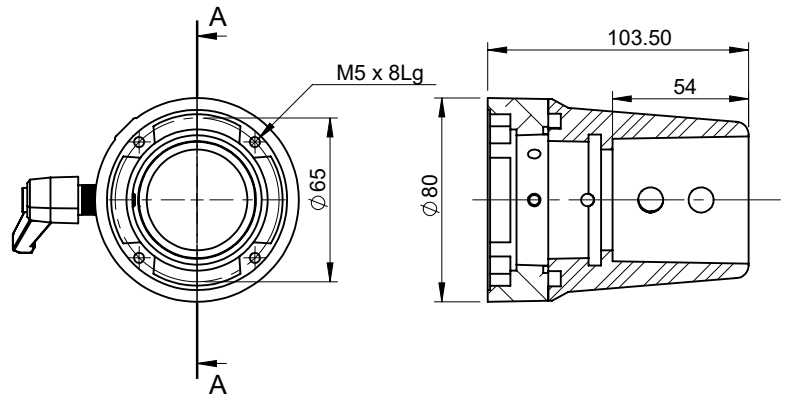
XIV



# SUPPORT ARM SYSTEM

Support Arm

Aluminium



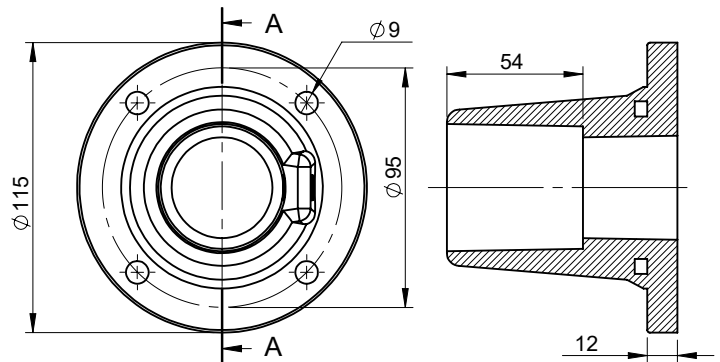
**D** **C** **X** **R** - **48**

- X** Mounting Style
- Plain Bracket
- F** Flange Bracket

Body Material	Body Finish
Aluminium	Gray PC

Support Arm

Aluminium



**D** **C** **M** - **48**

Body Material	Body Finish
Aluminium	Gray PC

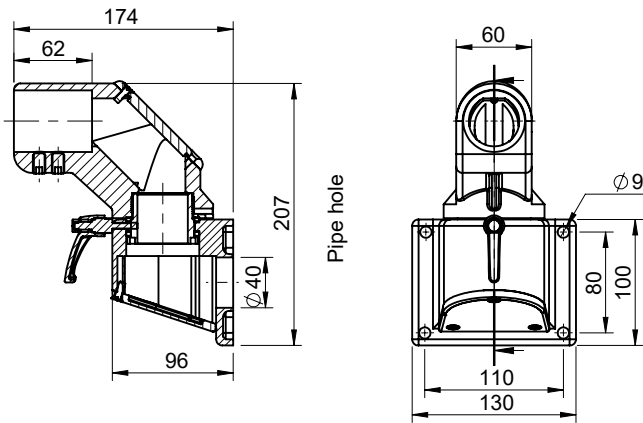
VIII



# SUPPORT ARM SYSTEM

Support Arm

Aluminium

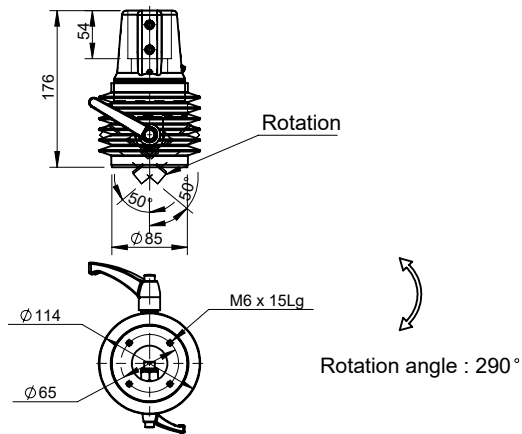


**D C W R E - 48**

Body Material	Body Finish
Aluminium	Gray PC

Support Arm

Aluminium



**D C R T - 48**

Body Material	Body Finish
Aluminium	Gray PC

VIII



I



II



III



IV



V



VI



VII



VIII



IX



X



XI



XII



XIII



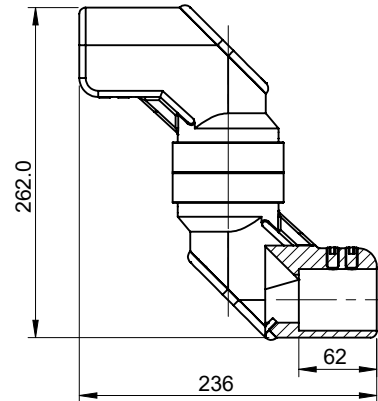
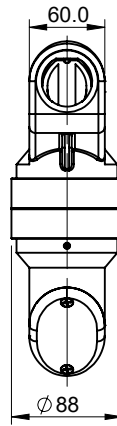
XIV



# SUPPORT ARM SYSTEM

Support Arm

Aluminium

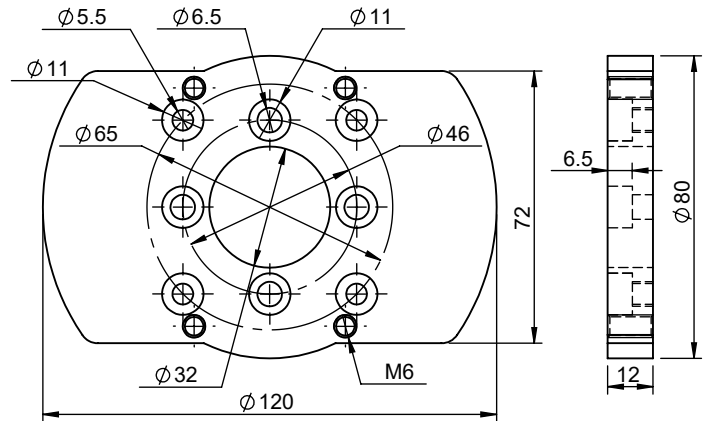


**D C P R E - 48**

Body Material	Body Finish
Aluminium	Gray PC

Support Arm

Aluminium



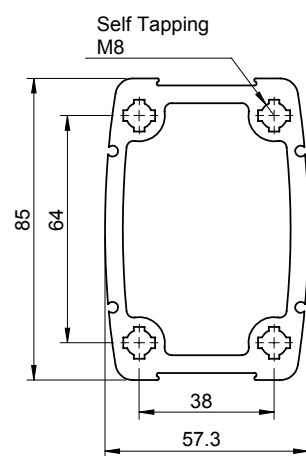
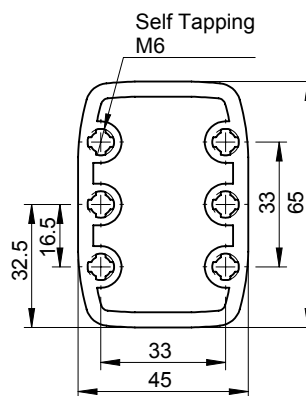
**D C R - 48 - RA**

Body Material	Body Finish
Aluminium	Gray PC

# SUPPORT ARM SYSTEM

Support Arm

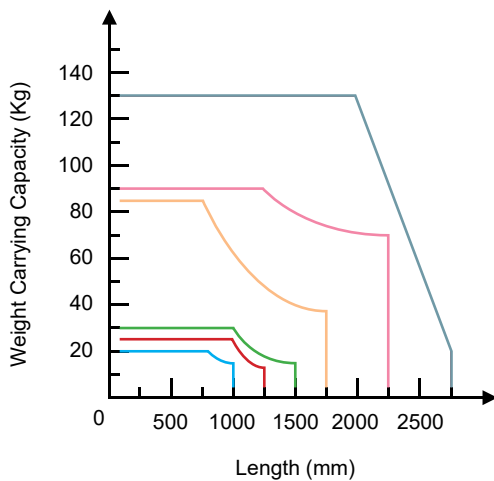
Aluminium



**X** Series  
4565  
6080

**D C S A - X - F**

**F** Finish  
- Raw  
**SPC** Silver PC



**SERIES**

- 75120
- 5385
- 4572
- 6080
- 4565
- 48

**Note**

Support Arm System Should be mounted on a rigid base. Section to be cut & milled at 90°.

VIII



I



II



III



IV



V



VI



VII



VIII



IX



X



XI



XII



XIII



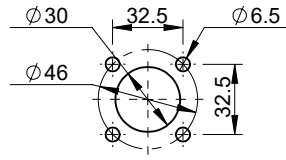
XIV



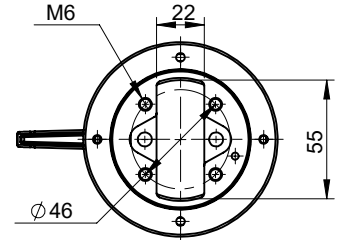
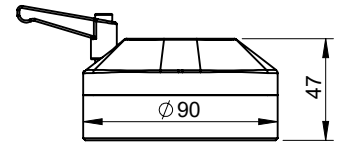
# SUPPORT ARM SYSTEM

Support Arm

Aluminium



Cut Out

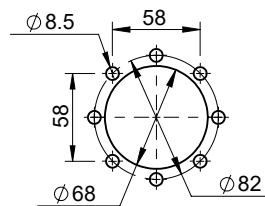


**D C S R - 4565**

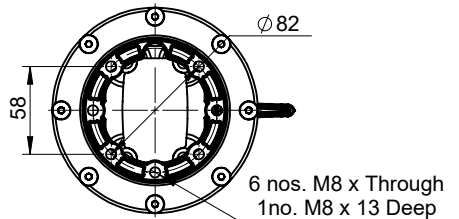
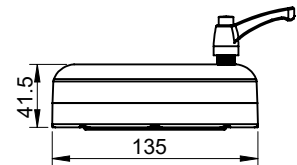
Body Material	Body Finish
Aluminium	Gray PC

Support Arm

Aluminium



Cut out



**D C R - 6080**

Body Material	Body Finish
Aluminium	Gray PC

VIII



I



II



III



IV



V



VI



VII



VIII



IX



X



XI



XII



XIII

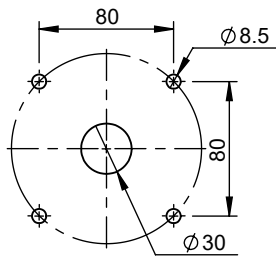


XIV

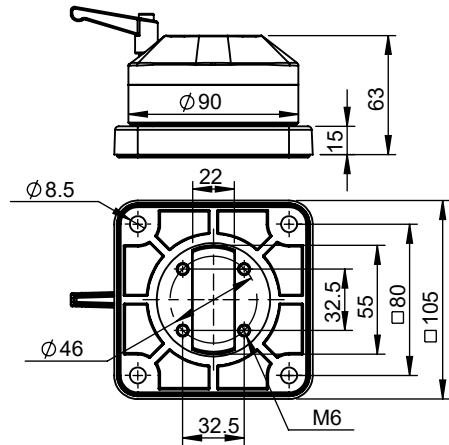
# SUPPORT ARM SYSTEM

## Support Arm

Aluminium



Cut Out

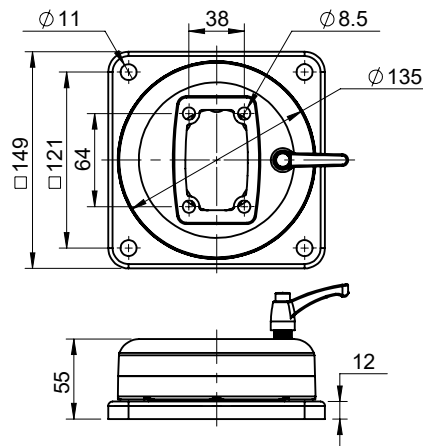


**D C F R - 4565**

Body Material	Body Finish
Aluminium	Gray PC

## Support Arm

Aluminium



**D C F R - 6080**

Body Material	Body Finish
Aluminium	Gray PC

VIII



I



II



III



IV



V



VI



VII



VIII



IX



X



XI



XII



XIII



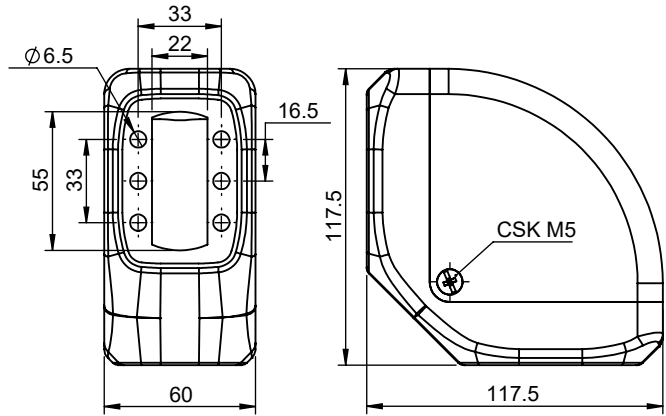
XIV



# SUPPORT ARM SYSTEM

Support Arm

Aluminium

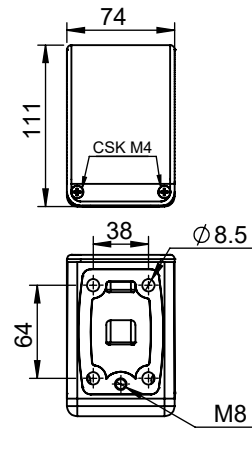


**D C S E - 4565**

Body Material	Body Finish
Aluminium	Gray PC

Support Arm

Aluminium



**D C E - 6080**

Body Material	Body Finish
Aluminium	Gray PC

VIII



I



II



III



IV



V



VI



VII



VIII



IX



X



XI



XII



XIII



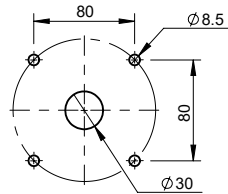
XIV



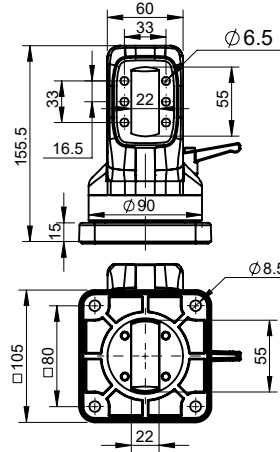
# SUPPORT ARM SYSTEM

## Support Arm

Aluminium



Cut Out

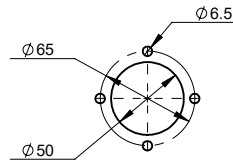


**D C S F R E - 4565**

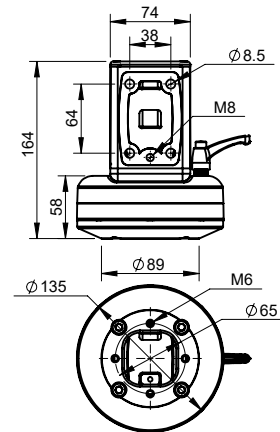
Body Material	Body Finish
Aluminium	Gray PC

## Support Arm

Aluminium



Cut out



**D C R E - SA - 6080**

Body Material	Body Finish
Aluminium	Gray PC

VIII



I



II



III



IV



V



VI



VII



VIII



IX



X



XI



XII



XIII



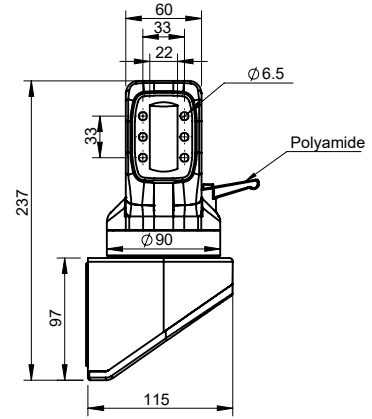
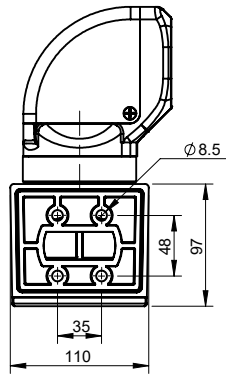
XIV



# SUPPORT ARM SYSTEM

Support Arm

Aluminium

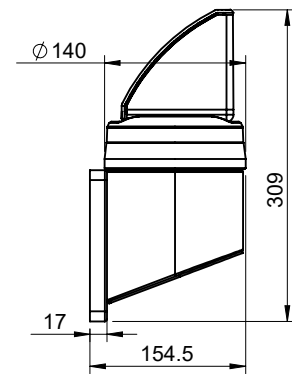
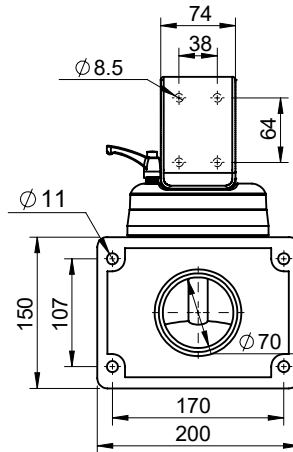


**D C S W R E - 4565**

Body Material	Body Finish
Aluminium	Gray PC

Support Arm

Aluminium



**D C W R E M - 6080**

Body Material	Body Finish
Aluminium	Gray PC

VIII



I



II



III



IV



V



VI



VII



VIII



IX



X



XI



XII



XIII

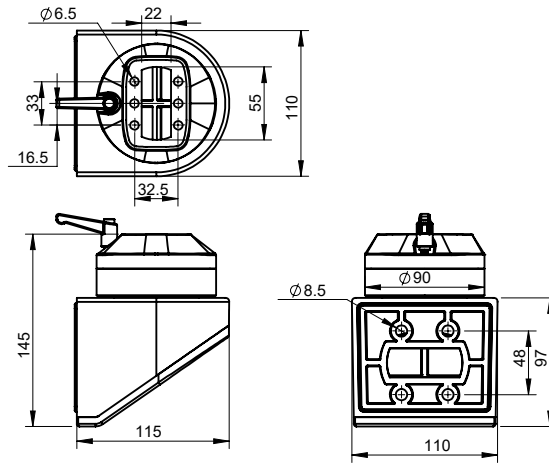


XIV

# SUPPORT ARM SYSTEM

## Support Arm

Aluminium

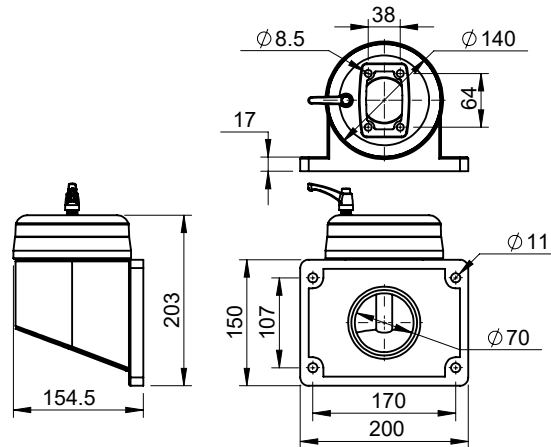


**D C S W R - 4565**

Body Material	Body Finish
Aluminium	Gray PC

## Support Arm

Aluminium



**D C W R M - 6080**

Body Material	Body Finish
Aluminium	Gray PC

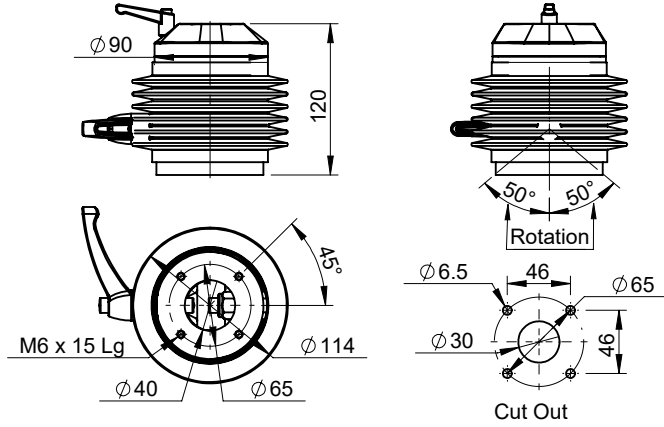
VIII



# SUPPORT ARM SYSTEM

Support Arm

Aluminium

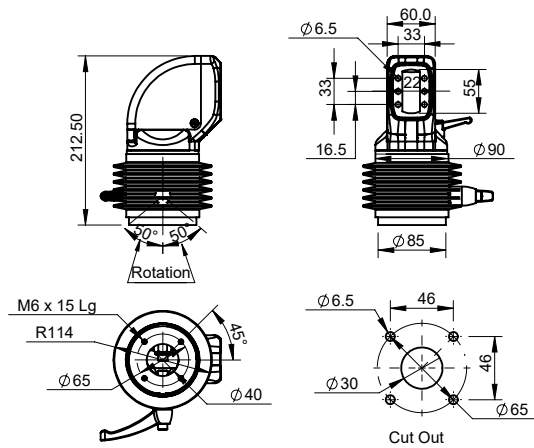


**D C S R T - 4565**

Body Material	Body Finish
Aluminium	Gray PC

Support Arm

Aluminium



**D C S R E T - 4565**

Body Material	Body Finish
Aluminium	Gray PC

VIII



I



II



III



IV



V



VI



VII



VIII



IX



X



XI



XII



XIII

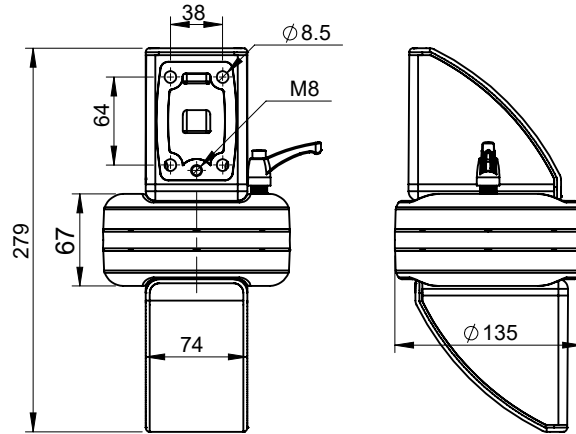


XIV

# SUPPORT ARM SYSTEM

Support Arm

Aluminium

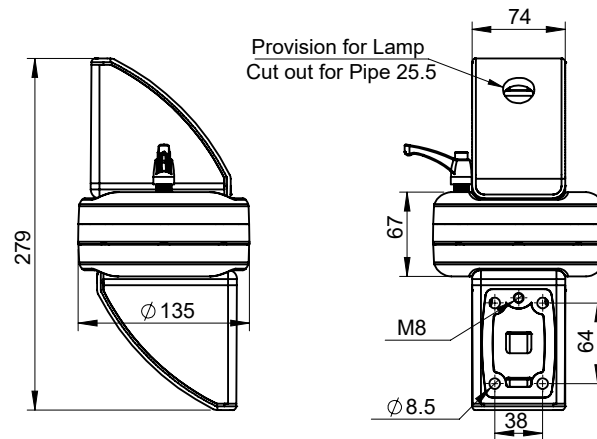


**D C P R E - 6080**

Body Material	Body Finish
Aluminium	Gray PC

Support Arm

Aluminium



**D C P R E H - 6080**

Body Material	Body Finish
Aluminium	Gray PC

VIII



I



II



III



IV



V



VI



VII



VIII



IX



X



XI



XII



XIII



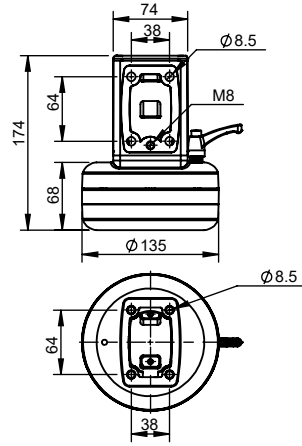
XIV



# SUPPORT ARM SYSTEM

Support Arm

Aluminium

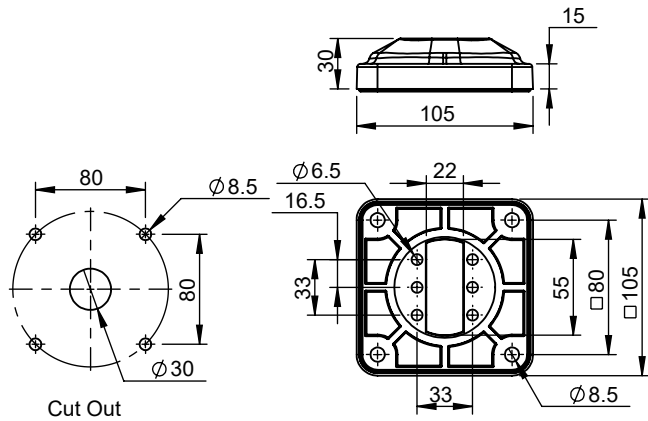


**D P C E - 6080**

Body Material	Body Finish
Aluminium	Gray PC

Support Arm

Aluminium



**D C S M - 4565**

Body Material	Body Finish
Aluminium	Gray PC

VIII



I



II



III



IV



V



VI



VII



VIII



IX



X



XI



XII



XIII

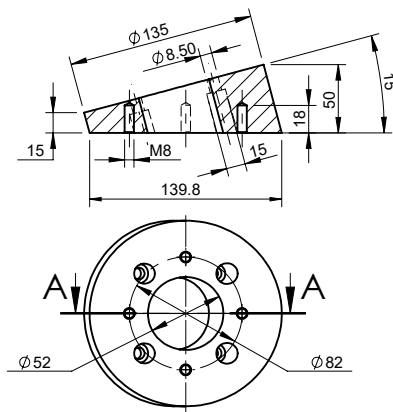
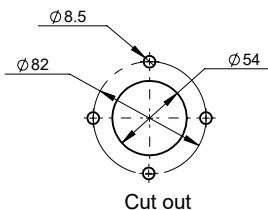


XIV

# SUPPORT ARM SYSTEM

## Support Arm

Aluminium

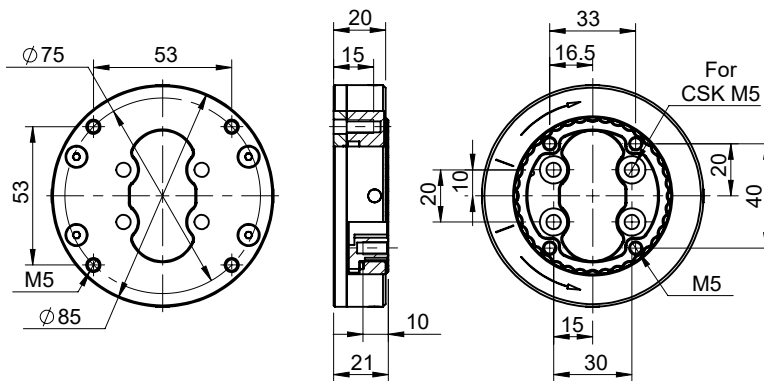


**D C S A - 15 - 6080**

Body Material	Body Finish
Aluminium	Gray PC

## Support Arm

Zinc



**D C R - 84**

Body Material	Body Finish
Zinc	Black PC

VIII



I



II



III



IV



V



VI



VII



VIII



IX



X



XI



XII



XIII



XIV



# Ideas







## Darshana Industries Pvt. Ltd.

📍 Head Office & Factory:  
Sub Plot No. 32, Final Plot No. 6,  
Ramtekdi Industrial Estate, Hadapsar,  
Pune-411 028. Maharashtra, INDIA.

☎ Tel: +91 20 2951 1572

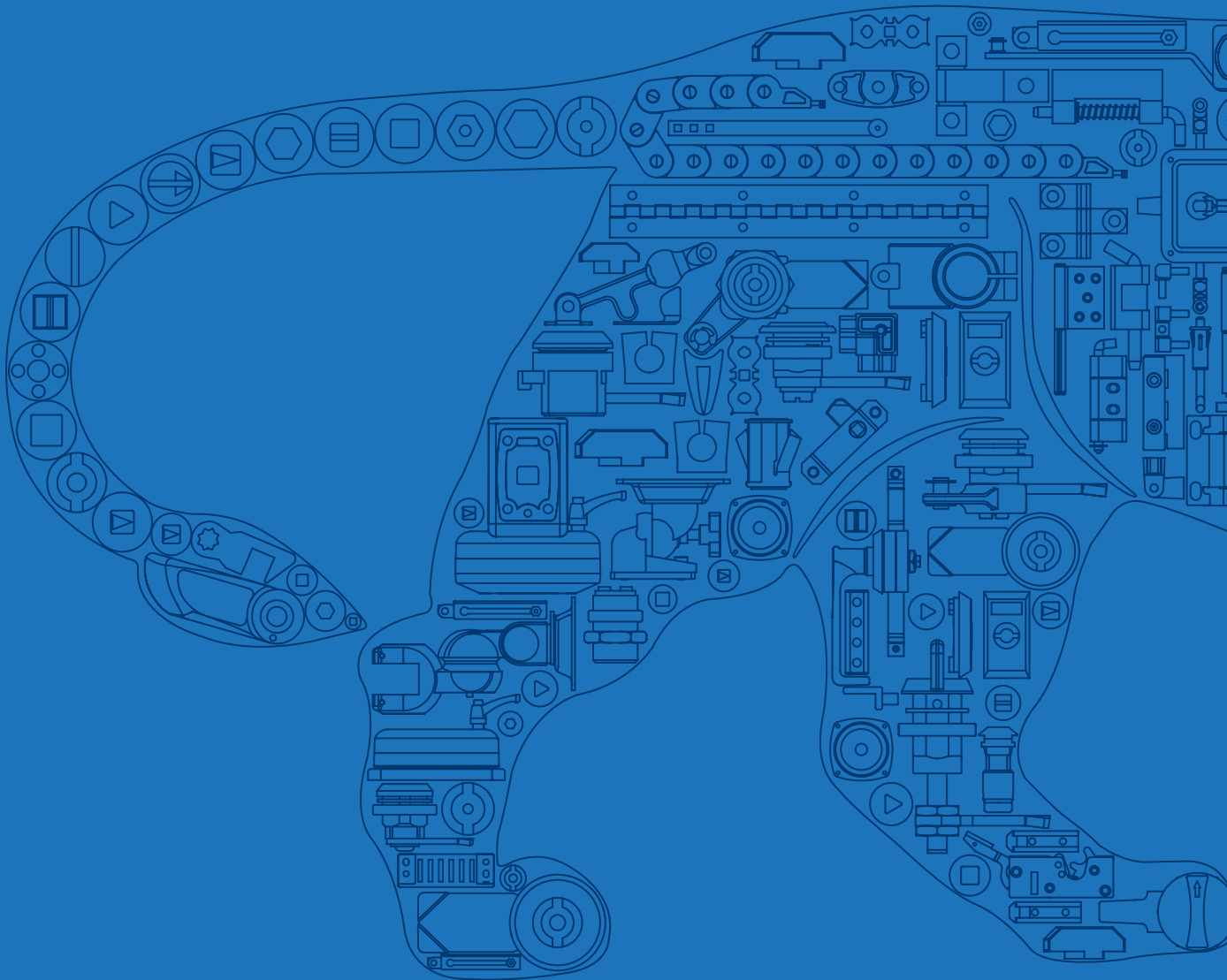
🌐 [darshanaindustries.com](http://darshanaindustries.com)

Head of Sales & Exports

👤 **Sanket Sutrave**  
✉ [ssutrave@darshanaindustries.com](mailto:ssutrave@darshanaindustries.com)

Head of Business Development

👤 **Jethan Reddy**  
✉ [jmadhireddy@darshanaindustries.com](mailto:jmadhireddy@darshanaindustries.com)



Made in India 🌐 Made for You