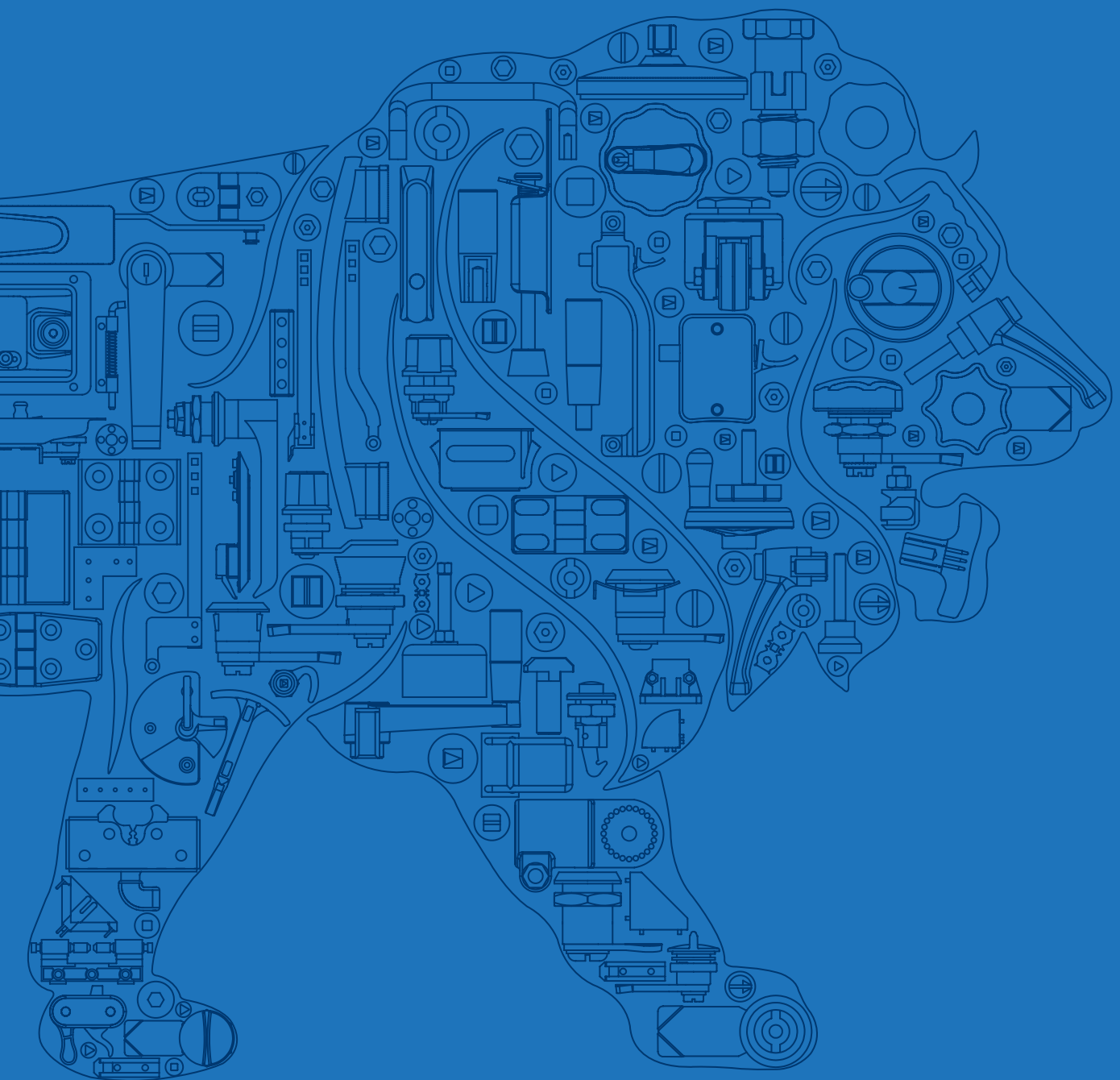


**D** darshana®



Made in India  Made for You



# WHO WE ARE

India's Largest and Most Trusted Manufacturer of  
Access Hardware and Machine Components

Founded in  
**1982**

Highly focused on  
**INDIA'S**  
Strong Machine  
Building Industry

Engineering

Tooling

Manufacturing

Sales

Two Locations in  
**PUNE**

120,000 sq. ft.  
(11,000 sq. m.)  
**AREA**

## OVER 350

People Committed to Customer Satisfaction

## OVER 20 DEALERS

in India and reliable partners overseas to provide end to end  
integration of parts in customer's designs

## OVER 90%

of components used are

## MADE-IN-HOUSE

Ensures control of quality and delivery

### OUR PRESENCE IN VARIOUS SECTORS



Agriculture



Airline Industry



Automation



Automobile



Dairy



Defence



Earthmoving



Electric Panels



Food



Generator



Hospital Essentials



HVAC



Interior



Kitchen Equipment



Machine Building



Marine



Medical



Office Furniture



Pharma



Printing & Packing



Railways



Renewable Energy



Telecom



Waste Management

# OUR GLOBAL PRESENCE

## India

- Ahmedabad
- Aurangabad
- Bengaluru
- Chennai
- Coimbatore
- Delhi
- Goa
- Hyderabad
- Indore
- Kolhapur
- Mumbai
- Nagpur
- Nashik
- Noida
- Pune
- Punjab
- Rajkot
- Surat
- Vadodara

## International

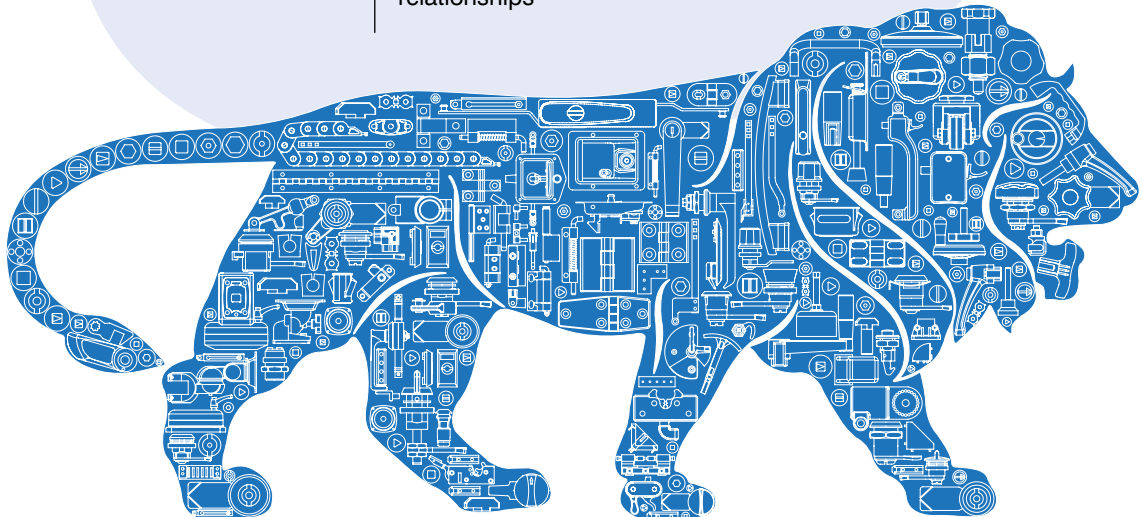
- Australia
- Canada
- Egypt
- France
- Iceland
- Ireland
- Israel
- Italy
- Kenya
- Kuwait
- Lebanon
- Malaysia
- Netherlands
- New Zealand
- Nigeria
- Oman
- Philippines
- Poland
- Saudi Arabia
- South Africa
- Spain
- Sri Lanka
- Thailand
- UAE
- United Kingdom
- Yemen
- Zambia
- USA

## Vision

To be the leading trusted source of engineered machine components.

## Mission

To create continuous growth opportunities through value driven product designs and operations.  
We will achieve this growth through well engineered designs that ensure product reliability and efficient manufacturing operations that are committed to quality, consistency, and cost management  
Customer connectivity that creates long-term relationships



Made in India  Made for You



## Primary Processes in Facility 1

- Zinc Die Casting
- Injection Molding
- Powder Coating
- Laser Cutting
- CNC Machining
- Gasketing
- Key Making
- Robotic Welding
- Robotic Buffing
- Automated Assembly Lines

ISO CERTIFIED


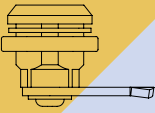
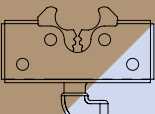
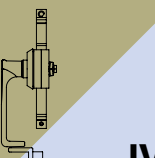
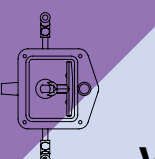

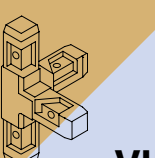
9001 : 15 | 14001 : 15 | 45001 : 15

## Primary Processes in Facility 2

- Stamping Unit
- Riveting Line
- Secondary Finishing Lines
- Assembly  
(Sheet Metal Components)
- Space for expansion



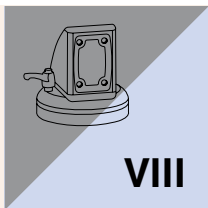
# Product Categories

| Colour coding for Category identification  | Product Category           | Category Sub Colour Shade | Page No.   |
|--|----------------------------|---------------------------|------------|
| <br>Category Number I     | <b>HANDLES</b>             |                           | 008 to 083 |
| <br>Category Number II   | <b>LOCKS</b>               |                           | 084 to 119 |
| <br>Category Number III | <b>LATCHES</b>             |                           | 120 to 145 |
| <br>Category Number IV  | <b>MULTI-POINT LOCKS</b>   |                           | 146 to 179 |
| <br>Category Number V   | <b>CANOPY LOCKS</b>        |                           | 180 to 195 |
| <br>Category Number VI  | <b>HINGES</b>              |                           | 196 to 267 |
| <br>Category Number VII | <b>CONVEYOR COMPONENTS</b> |                           | 268 to 291 |

# Part Code Configurator

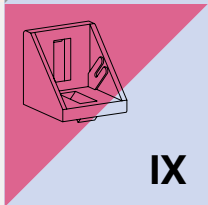


For building the **Part Code** please fill the variables that are outlined values from the table referring the drawings.



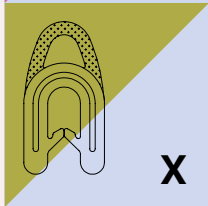
## SUPPORT ARM SYSTEM

292 to 323



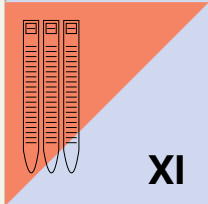
## ALUMINIUM SECTIONS & ACCESSORIES

324 to 343



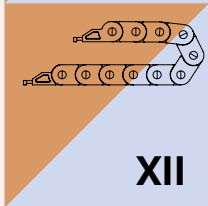
## GASKETS

344 to 349



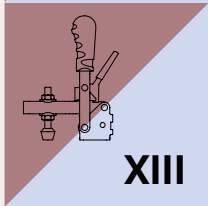
## CONDUIT ACCESSORIES & CABLE TIES

350 to 355



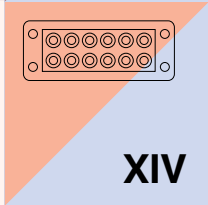
## DRAG CHAINS

356 to 361



## TOGGLE CLAMPS

362 to 379



## CABLE MANAGEMENT SYSTEM

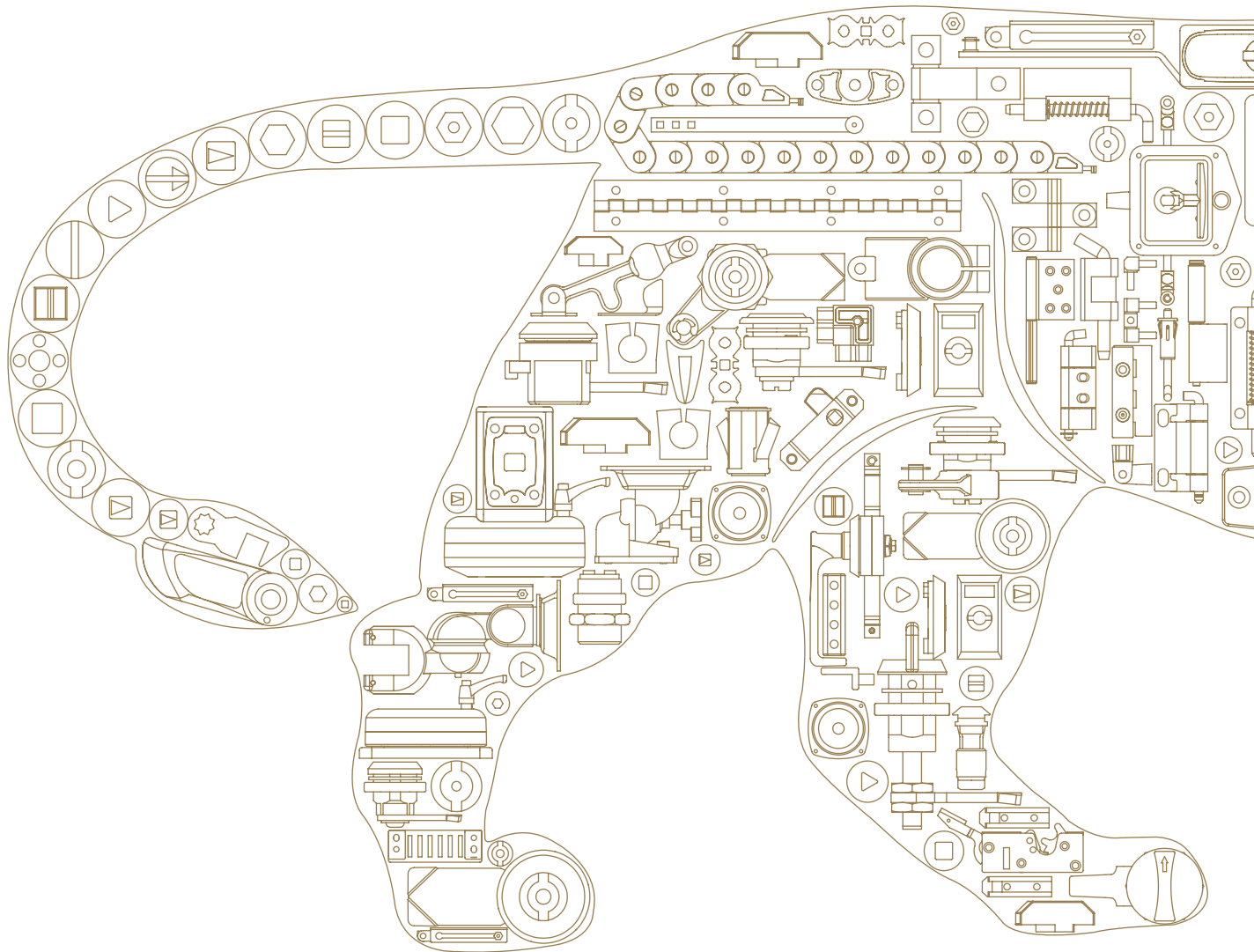
380 to 385



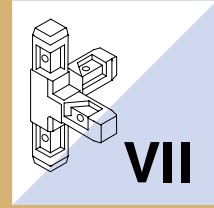
# Part Code Index

| Product Name        | Material  | Page |
|---------------------|-----------|------|
| Clamping Connectors | Aluminium | 270  |
|                     |           | 271  |
|                     |           | 272  |
|                     |           | 273  |
|                     |           | 274  |
|                     |           | 275  |
|                     |           | 276  |
|                     |           | 277  |
|                     | Polyamide | 278  |
|                     |           | 279  |
|                     |           | 280  |
|                     |           | 281  |
|                     |           | 282  |
|                     |           | 283  |
|                     |           | 284  |

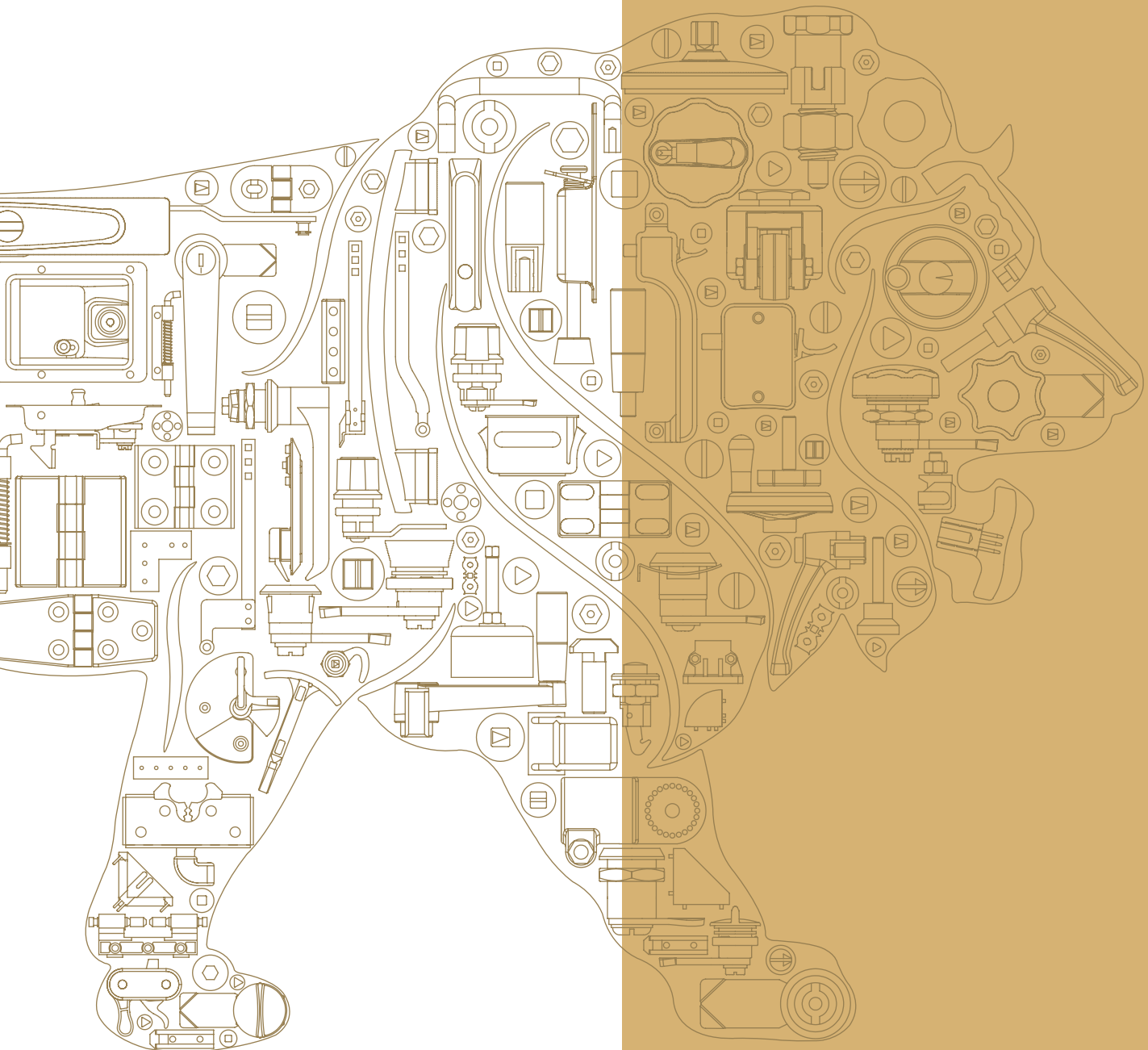
| Product Name         | Material  | Page |
|----------------------|-----------|------|
| Corner Joint Section | Zinc      | 285  |
|                      |           | 286  |
|                      |           | 287  |
|                      | Polyamide | 288  |
| Conveyor Accessories |           | 289  |
|                      |           | 290  |
|                      |           | 291  |







# CONVEYOR COMPONENTS

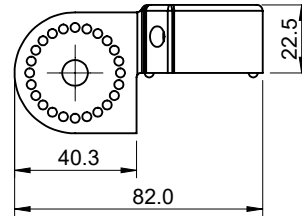
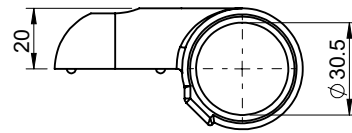


Made in India  Made for You

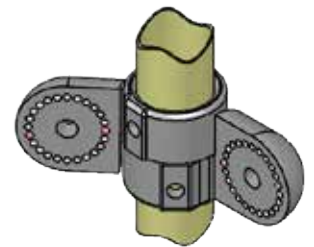
# CONVEYOR COMPONENTS

## Clamping Connectors

Aluminium



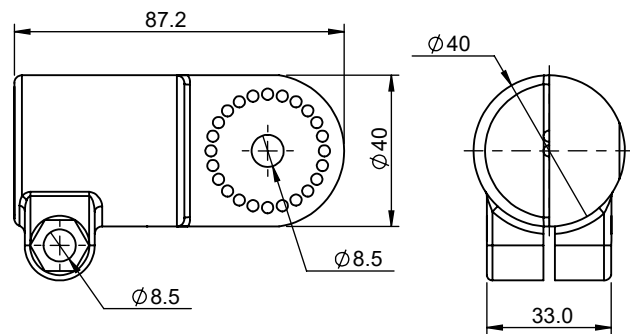
**D C C - X**



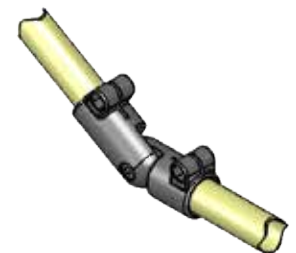
| <input checked="" type="checkbox"/> | Material  | Pipe Size      | Finish  | Description                |
|-------------------------------------|-----------|----------------|---------|----------------------------|
| <b>30400</b>                        | Aluminium | Ø30.0 (Coated) | Gray PC | Fixed Clamps (Single Unit) |
| <b>30401</b>                        |           |                |         | Pivot Clamps (Double Unit) |

## Clamping Connectors

Aluminium



**D C C - X**



| <input checked="" type="checkbox"/> | Material  | Pipe Size      | Finish  | Description                |
|-------------------------------------|-----------|----------------|---------|----------------------------|
| <b>30300</b>                        | Aluminium | Ø30.0 (Coated) | Gray PC | Fixed Clamps (Single Unit) |
| <b>30301</b>                        |           |                |         | Pivot Clamps (Double Unit) |

VII

I

II

III

IV

V

VI

VII

VIII

IX

X

XI

XII

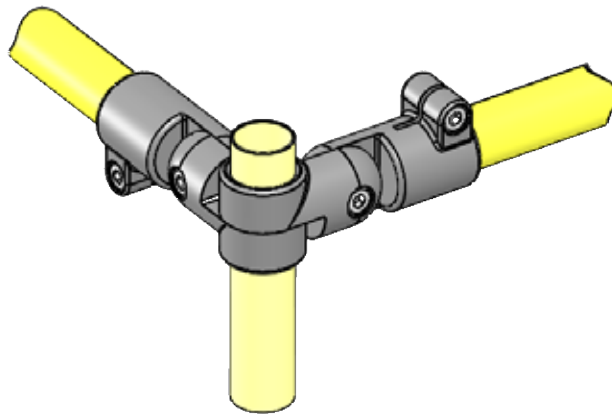
XIII

XIV

# CONVEYOR COMPONENTS

## Clamping Connectors

Aluminium

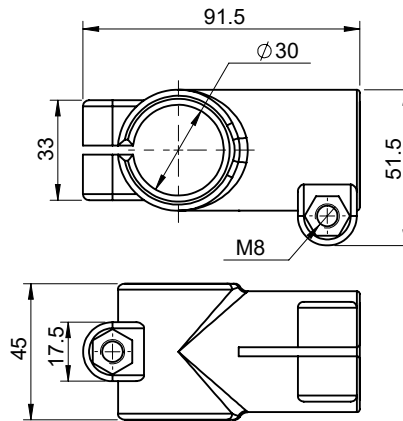


**D C C - X**

|              |           |                |         |              |
|--------------|-----------|----------------|---------|--------------|
| <b>X</b>     | Material  | Pipe Size      | Finish  | Description  |
| <b>30500</b> | Aluminium | Ø30.0 (Coated) | Gray PC | Pivot Clamps |

## Clamping Connectors

Aluminium



**D C C - X**

|              |           |                |         |              |
|--------------|-----------|----------------|---------|--------------|
| <b>X</b>     | Material  | Pipe Size      | Finish  | Description  |
| <b>30500</b> | Aluminium | Ø30.0 (Coated) | Gray PC | Pivot Clamps |

VII



I



II



III



IV



V



VI



VII



VIII



IX



X



XI



XII



XIII



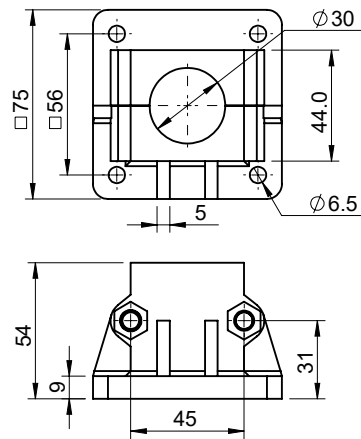
XIV



# CONVEYOR COMPONENTS

## Clamping Connectors

Aluminium

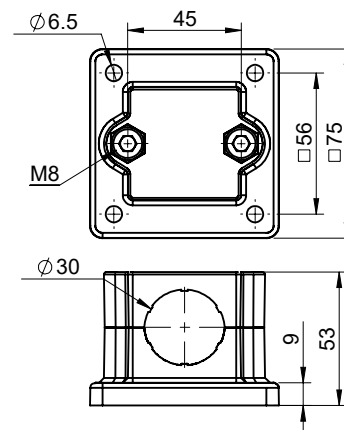


**D C C - X**

| <b>X</b>     | Material  | Pipe Size      | Finish  | Description               |
|--------------|-----------|----------------|---------|---------------------------|
| <b>30100</b> | Aluminium | Ø30.0 (Coated) | Gray PC | Horizontal Base Connector |

## Clamping Connectors

Aluminium



**D C C V - X**

| <b>X</b>     | Material  | Pipe Size      | Finish  | Description                 |
|--------------|-----------|----------------|---------|-----------------------------|
| <b>30100</b> | Aluminium | Ø30.0 (Coated) | Gray PC | Vertical Wall Mounting Base |

VII

I

II

III

IV

V

VI

VII

VIII

IX

X

XI

XII

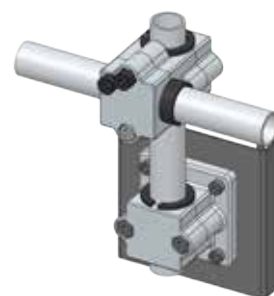
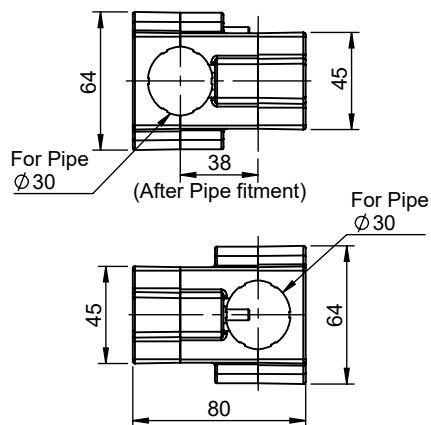
XIII

XIV

# CONVEYOR COMPONENTS

## Clamping Connectors

Aluminium



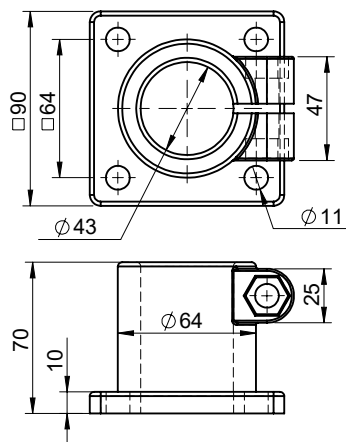
**D C C V H - X**

| <b>X</b>     | Material  | Pipe Size      | Finish  | Description |
|--------------|-----------|----------------|---------|-------------|
| <b>30100</b> | Aluminium | Ø30.0 (Coated) | Gray PC | Clamp       |

For Pipe Ø28.5 use sleeve DCC-30028 & Ø25.4 use sleeve DCC-30025

## Clamping Connectors

Aluminium



**D C C - X**

| <b>X</b>     | Material  | Pipe Size      | Finish  | Description               |
|--------------|-----------|----------------|---------|---------------------------|
| <b>42100</b> | Aluminium | Ø42.5 (Coated) | Gray PC | Horizontal Base Connector |

VII



I



II



III



IV



V



VI



VII



VIII



IX



X



XI



XII



XIII



XIV

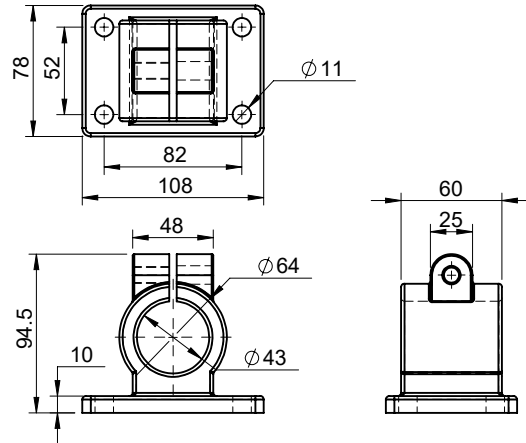


# CONVEYOR COMPONENTS

## Clamping Connectors

Aluminium

VII



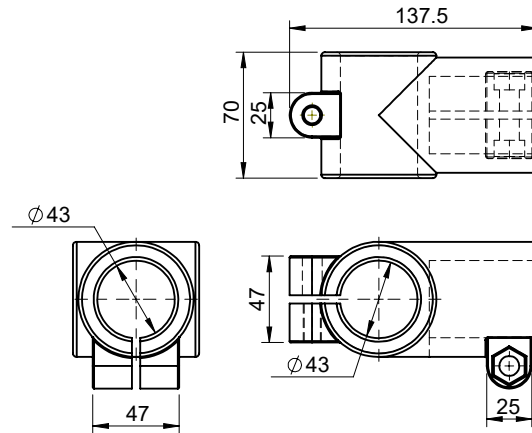
**D C C V - X**

| <b>X</b>     | Material  | Pipe Size      | Finish  | Description                 |
|--------------|-----------|----------------|---------|-----------------------------|
| <b>42100</b> | Aluminium | Ø42.5 (Coated) | Gray PC | Vertical Wall Mounting Base |

## Clamping Connectors

Aluminium

VII



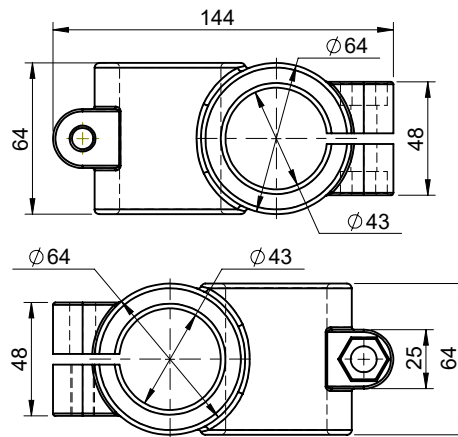
**D C C - X**

| <b>X</b>     | Material  | Pipe Size      | Finish  | Description   |
|--------------|-----------|----------------|---------|---------------|
| <b>42200</b> | Aluminium | Ø42.5 (Coated) | Gray PC | Connector 90° |

# CONVEYOR COMPONENTS

## Clamping Connectors

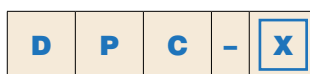
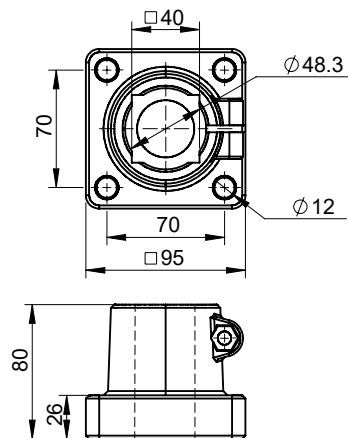
Aluminium



| <input checked="" type="checkbox"/> | Material  | Pipe Size      | Finish  | Description   |
|-------------------------------------|-----------|----------------|---------|---------------|
| 42300                               | Aluminium | Ø42.5 (Coated) | Gray PC | Connector 90° |

## Clamping Connectors

Polyamide



| <input checked="" type="checkbox"/> | Material  | Pipe Size                 | Description     |
|-------------------------------------|-----------|---------------------------|-----------------|
| 48100                               | Polyamide | Ø48.3 / Sq. 40.0 (Coated) | Horizontal Base |

VII

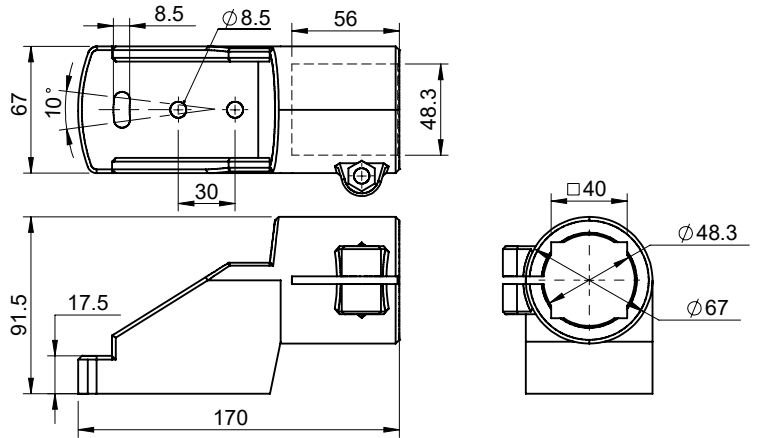




# CONVEYOR COMPONENTS

## Clamping Connectors

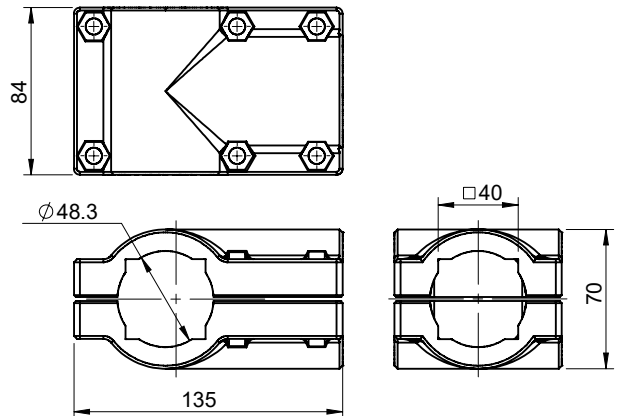
Polyamide



| <input checked="" type="checkbox"/> | Material  | Pipe Size                 | Description        |
|-------------------------------------|-----------|---------------------------|--------------------|
| 48200                               | Polyamide | Ø48.3 / Sq. 40.0 (Coated) | Side Mounting Base |

## Clamping Connectors

Polyamide



| <input checked="" type="checkbox"/> | Material  | Pipe Size                 | Description   |
|-------------------------------------|-----------|---------------------------|---------------|
| 48300                               | Polyamide | Ø48.3 / Sq. 40.0 (Coated) | Connector 90° |

VII



I



II



III



IV



V



VI



VII



VIII



IX



X



XI



XII



XIII

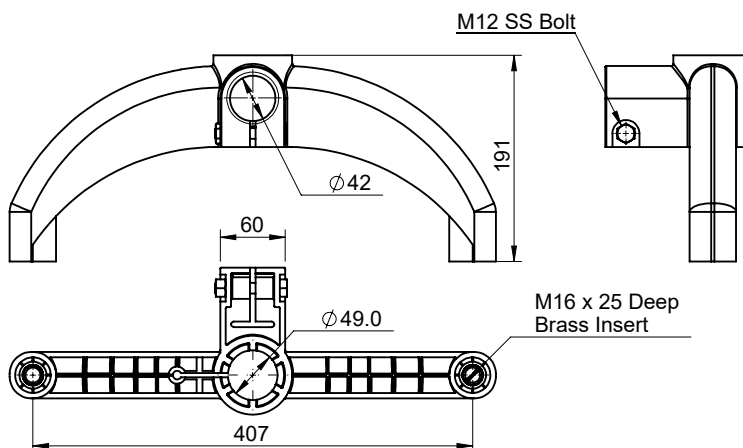


XIV

# CONVEYOR COMPONENTS

## Clamping Connectors

Polyamide

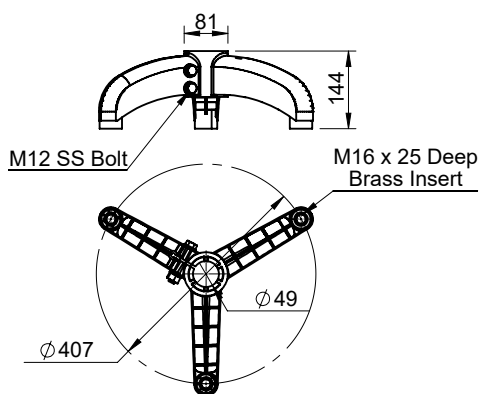


**D P C - 2.5 - X**

| <input checked="" type="checkbox"/> | Material  | Pipe Size      | Description    |
|-------------------------------------|-----------|----------------|----------------|
| <b>48500</b>                        | Polyamide | Ø48.3 (Coated) | Base Connector |

## Clamping Connectors

Polyamide



**D P C - 3 - X**

| <input checked="" type="checkbox"/> | Material  | Pipe Size      | Description    |
|-------------------------------------|-----------|----------------|----------------|
| <b>48400</b>                        | Polyamide | Ø48.3 (Coated) | Base Connector |

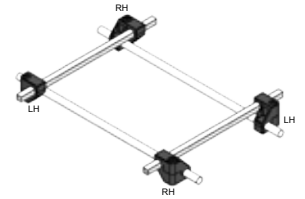
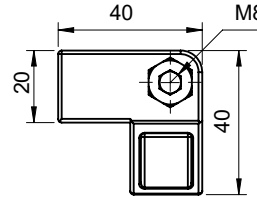
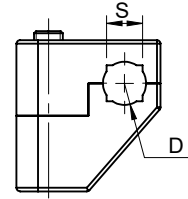
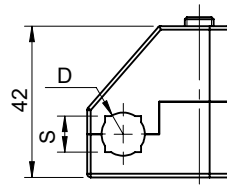
VII



# CONVEYOR COMPONENTS

## Clamping Connectors

Polyamide

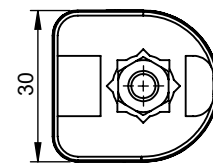
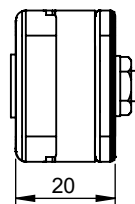
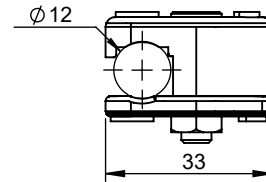


**D C C - X - SR - Y**

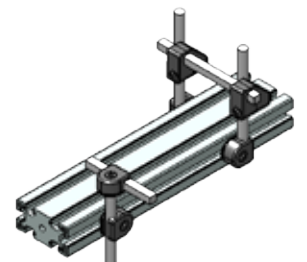
| <b>X</b>  | <b>Y</b> | Material  | Clamping Size | S  | D  | Description |
|-----------|----------|-----------|---------------|----|----|-------------|
| <b>8</b>  | LH       | Polyamide | Sq. 8 or Ø10  | 8  | 10 | Connector   |
|           | RH       |           |               |    |    |             |
| <b>10</b> | LH       |           | Sq. 10 or Ø12 | 10 | 12 |             |
|           | RH       |           |               |    |    |             |

## Clamping Connectors

Polyamide



**D C C - 12 - SR**



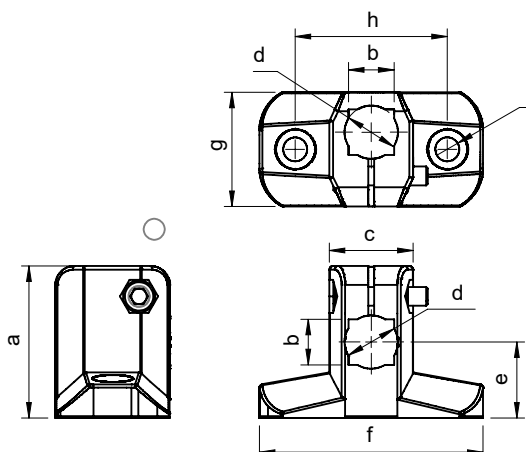
| Material  | Clamping Size | Description      |
|-----------|---------------|------------------|
| Polyamide | Sq. 10 or Ø12 | Holder Connector |

Product with Rod Application

# CONVEYOR COMPONENTS

## Clamping Connectors

Polyamide

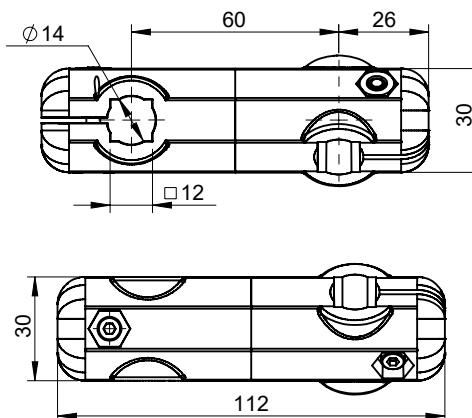


**D P C B - 20 - X**

| <input checked="" type="checkbox"/> | Material  | Clamping Size  | S  | D  | Description    |
|-------------------------------------|-----------|----------------|----|----|----------------|
| <b>1012</b>                         | Polyamide | Sq. 10 or Ø12  | 10 | 12 | Base Connector |
| <b>1214</b>                         |           | Sq. 112 or Ø14 | 12 | 14 |                |

## Clamping Connectors

Polyamide



**D P C H - 1214 - X**

| <input checked="" type="checkbox"/> | Material  | Clamping Size | Description      |
|-------------------------------------|-----------|---------------|------------------|
| <b>A</b>                            | Polyamide | Sq. 12 or Ø14 | Holder Connector |

VII



I



II



III



IV



V



VI



VII



VIII



IX



X



XI



XII



XIII



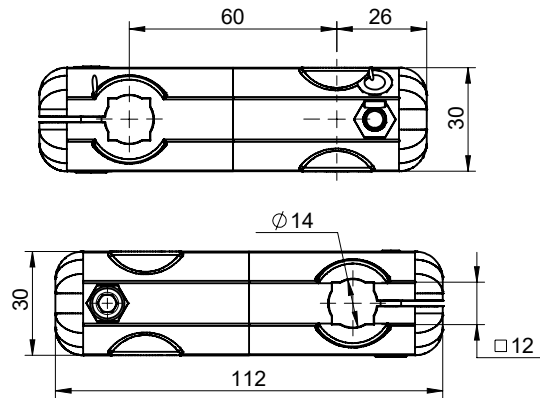
XIV



# CONVEYOR COMPONENTS

## Clamping Connectors

Polyamide

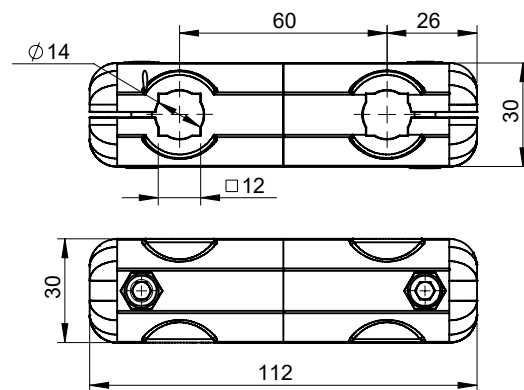


**D P C H - 1214 - X**

| <input checked="" type="checkbox"/> | Material  | Clamping Size | Description      |
|-------------------------------------|-----------|---------------|------------------|
| <b>P</b>                            | Polyamide | Sq.12 or Ø14  | Holder Connector |

## Clamping Connectors

Polyamide



**D P C H - 1214 - X**

| <input checked="" type="checkbox"/> | Material  | Clamping Size | Description      |
|-------------------------------------|-----------|---------------|------------------|
| <b>PL</b>                           | Polyamide | Sq.12 or Ø14  | Holder Connector |

VII



I



II



III



IV



V



VI



VII



VIII



IX



X



XI



XII



XIII

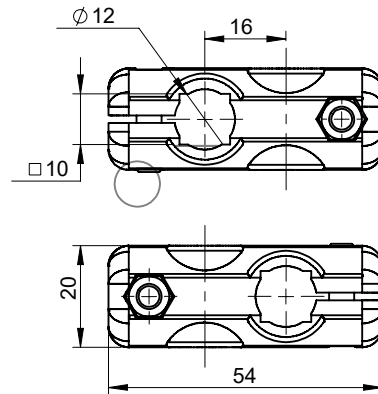


XIV

# CONVEYOR COMPONENTS

## Clamping Connectors

Polyamide

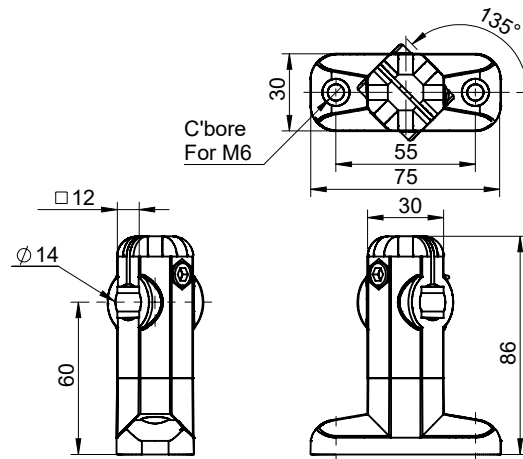


**D P C H - X**

|                                     |           |               |                  |
|-------------------------------------|-----------|---------------|------------------|
| <input checked="" type="checkbox"/> | Material  | Clamping Size | Description      |
| <b>1012</b>                         | Polyamide | Sq.10 or Ø12  | Holder Connector |

## Clamping Connectors

Polyamide



**D P C B - 60 - 1214 - X**

|                                     |           |               |                |
|-------------------------------------|-----------|---------------|----------------|
| <input checked="" type="checkbox"/> | Material  | Clamping Size | Description    |
| <b>A</b>                            | Polyamide | Sq.12 or Ø14  | Base Connector |

VII



I



II



III



IV



V



VI



VII



VIII



IX



X



XI



XII



XIII



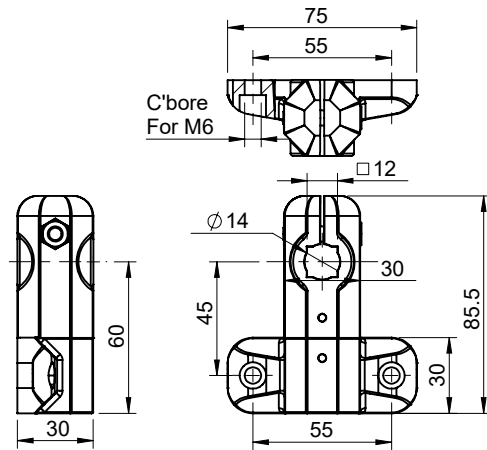
XIV



# CONVEYOR COMPONENTS

## Clamping Connectors

Polyamide

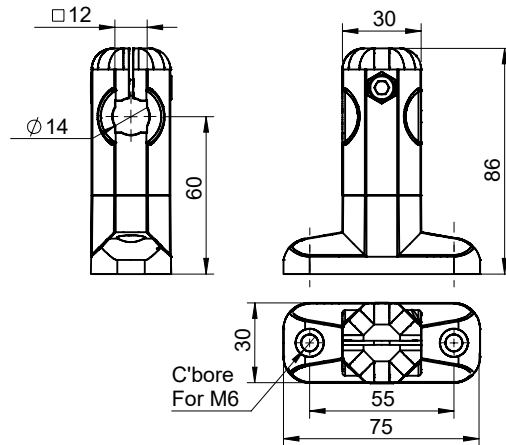


**D P C B - 60 - 1214 - X**

| <input checked="" type="checkbox"/> | Material  | Clamping Size | Description    |
|-------------------------------------|-----------|---------------|----------------|
| <b>P</b>                            | Polyamide | Sq.12 or Ø14  | Base Connector |

## Clamping Connectors

Polyamide



**D P C B - 60 - 1214 - X**

| <input checked="" type="checkbox"/> | Material  | Clamping Size | Description    |
|-------------------------------------|-----------|---------------|----------------|
| <b>PL</b>                           | Polyamide | Sq.12 or Ø14  | Base Connector |

VII



I



II



III



IV



V



VI



VII



VIII



IX



X



XI



XII



XIII



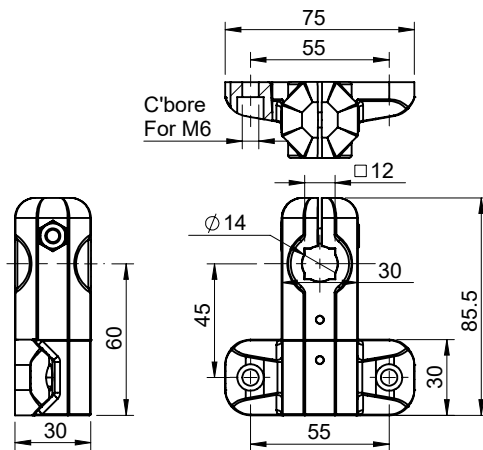
XIV



# CONVEYOR COMPONENTS

## Camping Connectors

Polyamide

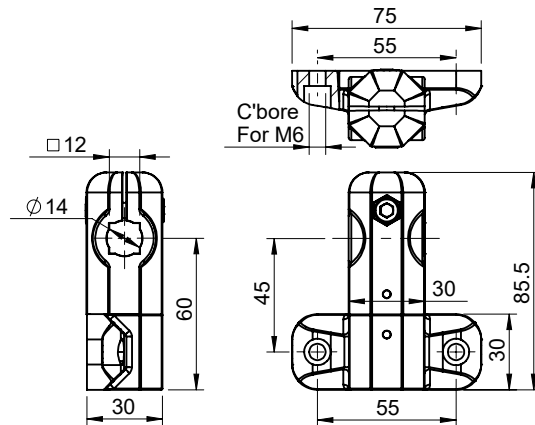


**D P C W - 60 - 1214 - X**

| <input checked="" type="checkbox"/> | Material  | Clamping Size | Description      |
|-------------------------------------|-----------|---------------|------------------|
| <b>P</b>                            | Polyamide | Sq.12 or Ø14  | Holder Connector |

## Camping Connectors

Polyamide



**D P C W - 60 - 1214 - X**

| <input checked="" type="checkbox"/> | Material  | Clamping Size | Description      |
|-------------------------------------|-----------|---------------|------------------|
| <b>PL</b>                           | Polyamide | Sq.12 or Ø14  | Holder Connector |

VII



I



II



III



IV



V



VI



VII



VIII



IX



X



XI



XII



XIII



XIV

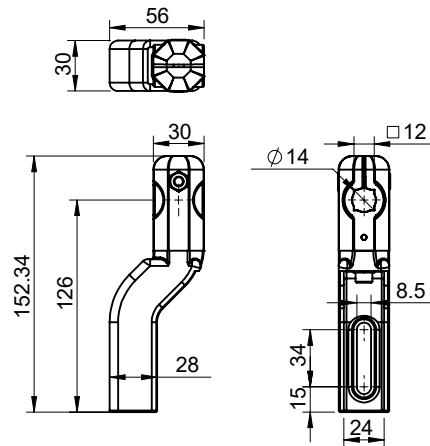


# CONVEYOR COMPONENTS

## Clamping Connectors

Polyamide

VII



**D P C W - 126 - 1214 - X**

| <input checked="" type="checkbox"/> | Material  | Clamping Size | Description      |
|-------------------------------------|-----------|---------------|------------------|
| <b>P</b>                            | Polyamide | Sq.12 or Ø14  | Holder Connector |

## Clamping Connectors

Polyamide

VII

VIII

IX

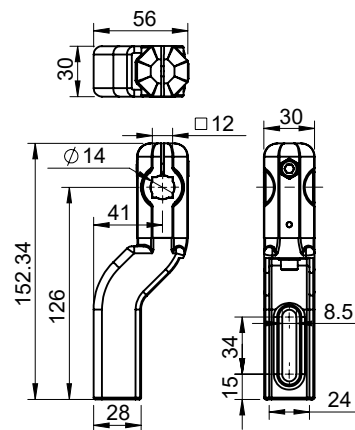
X

XI

XII

XIII

XIV

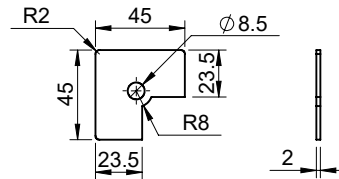
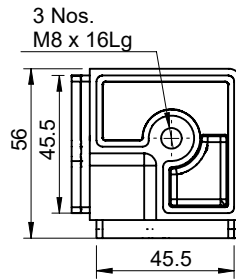
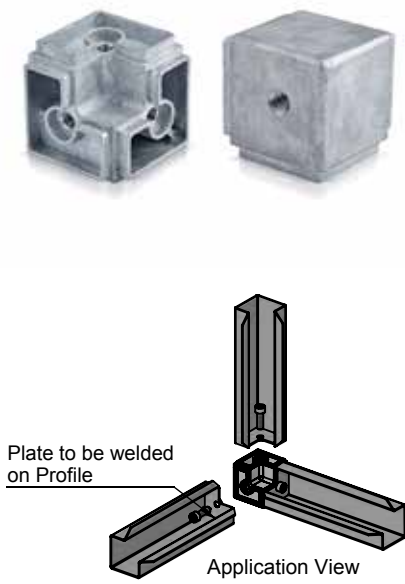


**D P C W - 126 - 1214 - X**

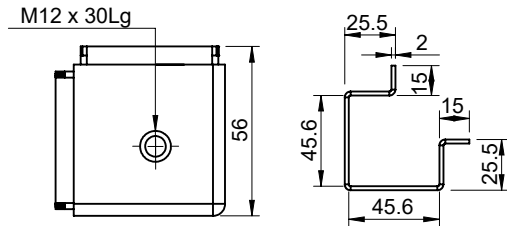
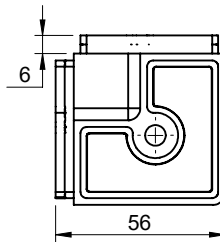
| <input checked="" type="checkbox"/> | Material  | Clamping Size | Description      |
|-------------------------------------|-----------|---------------|------------------|
| <b>PL</b>                           | Polyamide | Sq.12 or Ø14  | Holder Connector |

## Corner Joint Section

Zinc



Recommended Plate



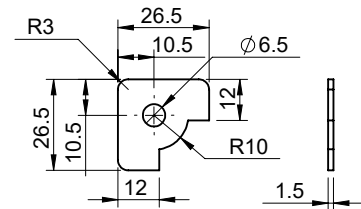
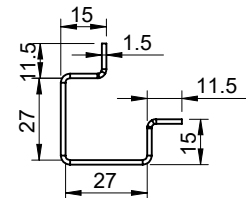
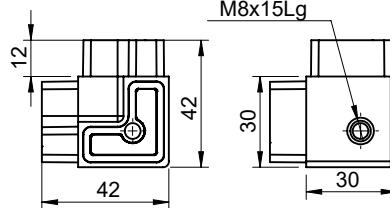
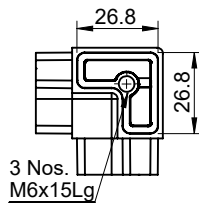
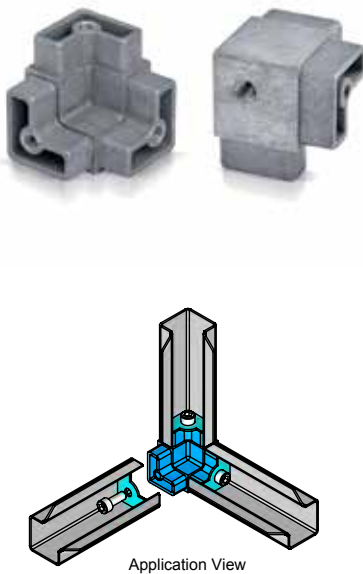
Recommended Profile

**A F 3 W - X**

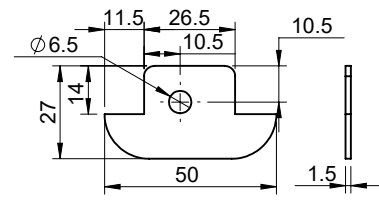
| <b>X</b>  | Material | Finish | Description        |
|-----------|----------|--------|--------------------|
| <b>50</b> | Zinc     | Raw    | 3 Way Corner Joint |

## Corner Joint Section

Zinc



Recommended Plate



**A F 3 W - X**

| <b>X</b>  | Material | Finish | Description        |
|-----------|----------|--------|--------------------|
| <b>30</b> | Zinc     | Raw    | 3 Way Corner Joint |

VII



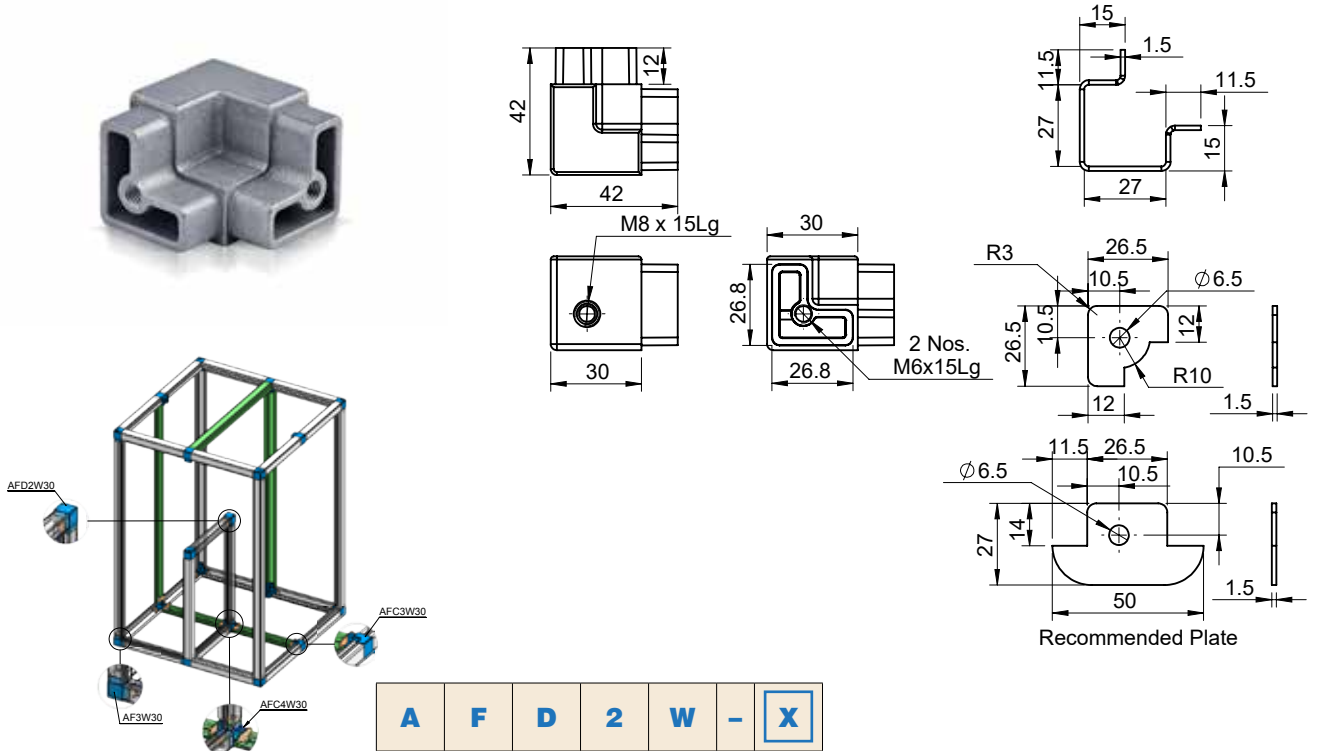
# CONVEYOR COMPONENTS

## Corner Joint Section

Zinc

VII

- I
- II
- III
- IV
- V
- VI
- VII
- VIII
- IX
- X
- XI
- XII
- XIII
- XIV



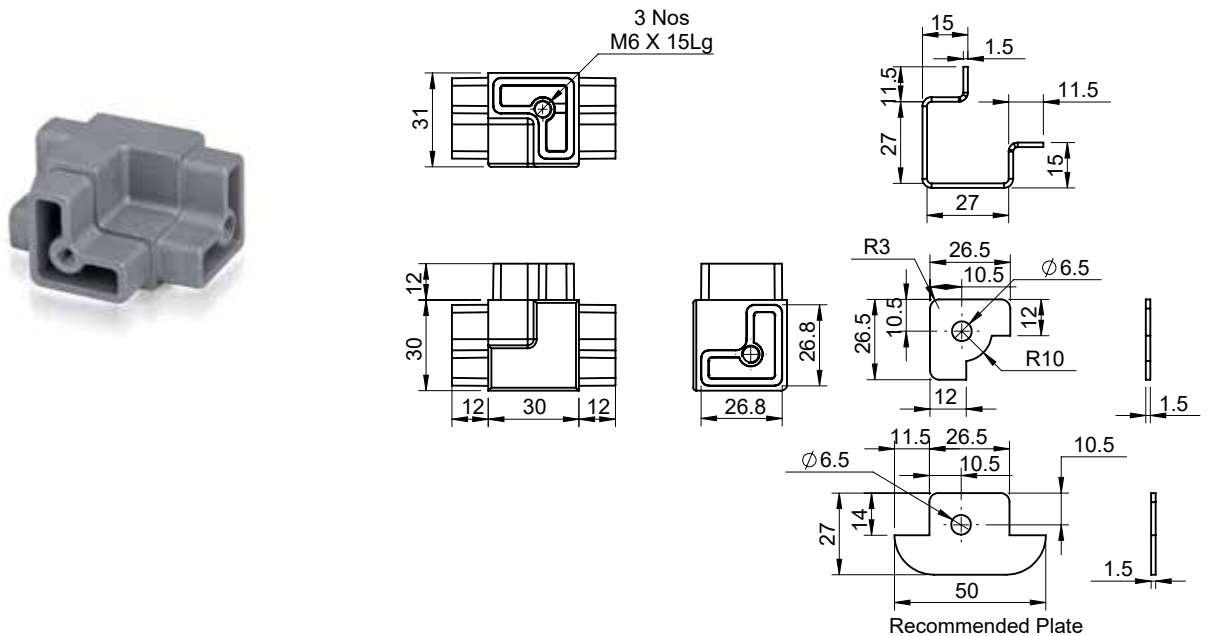
**A F D 2 W - X**

| <input checked="" type="checkbox"/> | Material | Finish | Description        |
|-------------------------------------|----------|--------|--------------------|
| <b>30</b>                           | Zinc     | Raw    | 2 Way Corner Joint |

## Corner Joint Section

Zinc

- X
- XI
- XII
- XIII
- XIV

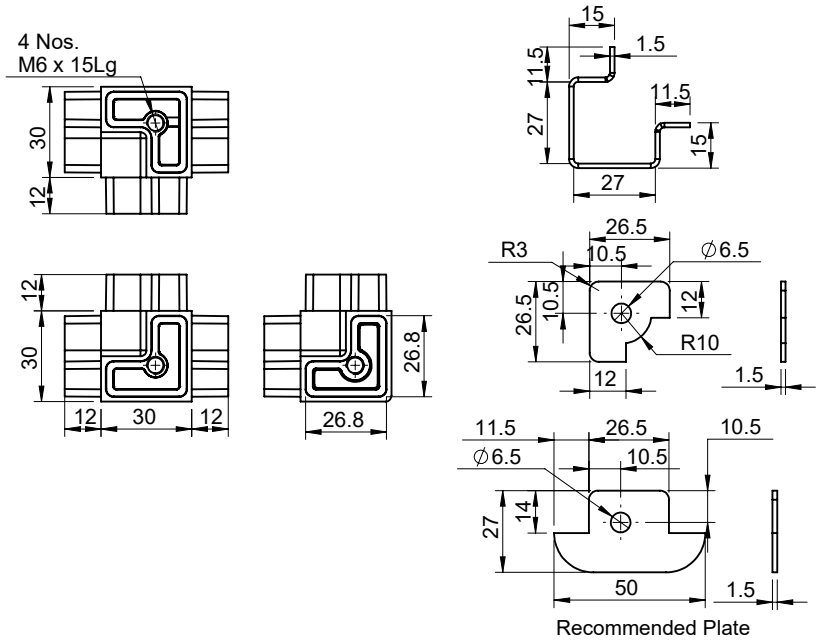


**A F C 3 W - X**

| <input checked="" type="checkbox"/> | Material | Finish | Description        |
|-------------------------------------|----------|--------|--------------------|
| <b>30</b>                           | Zinc     | Raw    | 3 Way Corner Joint |

## Corner Joint Section

Zinc

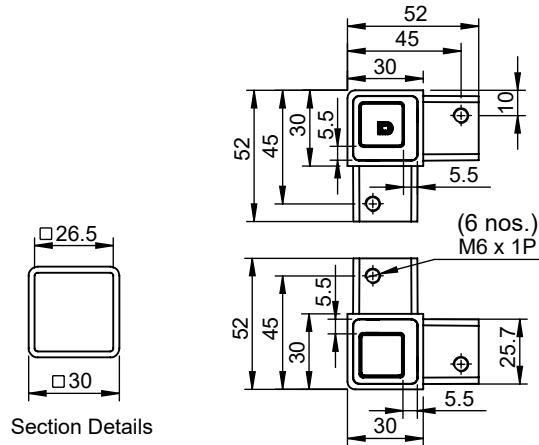


**A F C 4 W - X**

| <b>X</b>  | Material | Finish | Description        |
|-----------|----------|--------|--------------------|
| <b>30</b> | Zinc     | Raw    | 4 Way Corner Joint |

## Corner Joint Section

Zinc



**A F C 3 W - SQ - X**

| <b>X</b>  | Material | Finish | Description        |
|-----------|----------|--------|--------------------|
| <b>30</b> | Zinc     | Raw    | 3 Way Corner Joint |

Add "PC" at the end for "Black PC"

VII



I



II



III



IV



V



VI



VII



VIII



IX



X



XI



XII



XIII



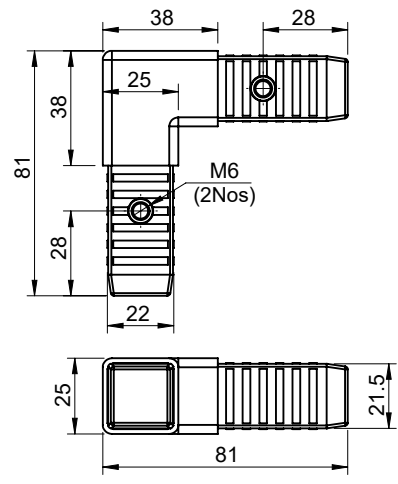
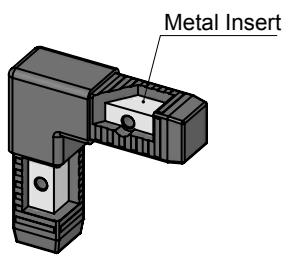
XIV

# CONVEYOR COMPONENTS

## Corner Joint Section

Polyamide

- VII
- I
- II
- III
- IV
- V
- VI
- VII
- VIII
- IX
- X
- XI
- XII
- XIII
- XIV

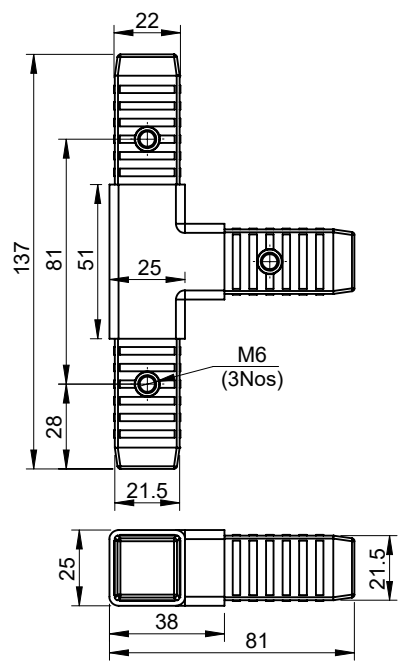
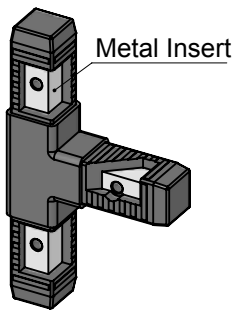


**A P F D 2 W - X**

| <b>X</b> | Body Material | Insert Material | Description           |
|----------|---------------|-----------------|-----------------------|
| 25       | Polyamide     | MS              | 2 Way Straight Corner |

## Corner Joint Section

Polyamide



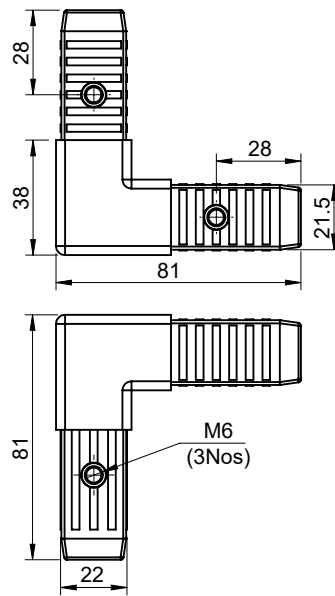
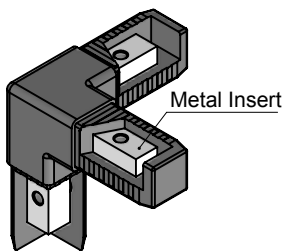
**A P F C 3 W - X**

| <b>X</b> | Body Material | Insert Material | Description           |
|----------|---------------|-----------------|-----------------------|
| 25       | Polyamide     | MS              | 3 Way Straight Corner |

# CONVEYOR COMPONENTS

## Corner Joint Section

Polyamide

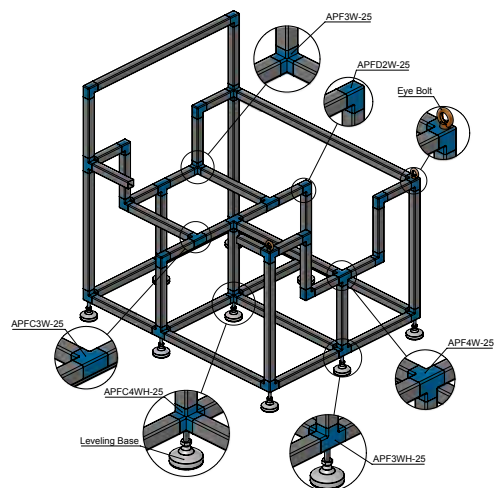
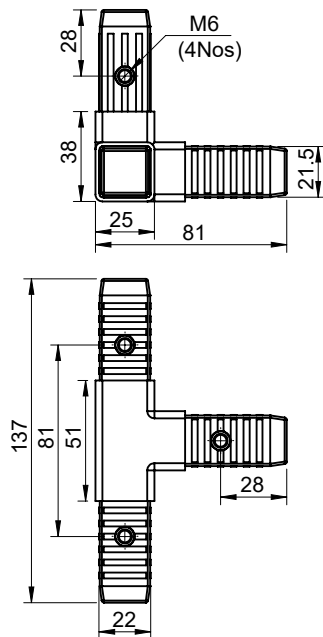
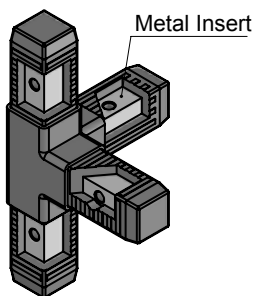


**A P F 3 W - X**

| <b>X</b> | Body Material | Insert Material | Description           |
|----------|---------------|-----------------|-----------------------|
| 25       | Polyamide     | MS              | 3 Way Straight Corner |

## Corner Joint Section

Polyamide



**A P F C 4 W - X**

| <b>X</b> | Body Material | Insert Material | Description           |
|----------|---------------|-----------------|-----------------------|
| 25       | Polyamide     | MS              | 4 Way Straight Corner |

VII



I



II



III



IV



V



VI



VII



VIII



IX



X



XI



XII



XIII



XIV





# CONVEYOR COMPONENTS

## Conveyor Accessories

VII



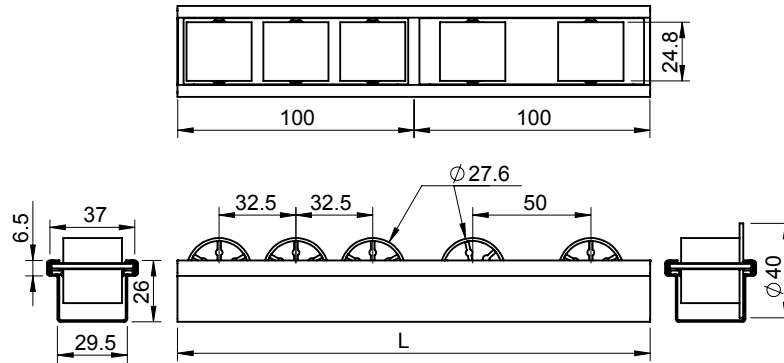
**DRC30-50-10** (L=500mm)  
**DRC30-100-20** (L=1000mm)

**DRC30-50-15** (L=500mm)  
**DRC30-100-30** (L=1000mm)



**DRCF30-50-10** (L=500mm)  
**DRCF30-100-20** (L=1000mm)

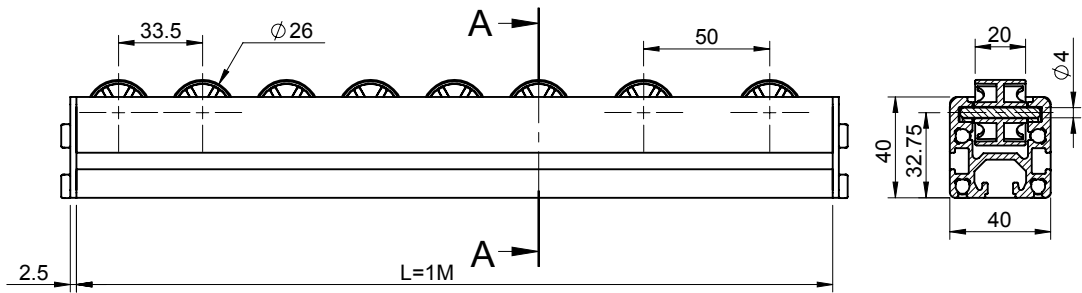
**DRC30-20-4 / DRCF30-20-4 / DRC30-20-6**  
(L=200mm)



| Part Code            | Section Material | Section Length (mm) L | Roller CD | Roller Material | Roller Type  |               |
|----------------------|------------------|-----------------------|-----------|-----------------|--------------|---------------|
| <b>DRC30-20-4</b>    | Galvanised       | 200                   | 50        | Polyamide       | Plain Roller |               |
| <b>DRC30-20-6</b>    |                  |                       | 32.5      |                 |              |               |
| <b>DRC30-50-10</b>   |                  |                       | 50        |                 |              |               |
| <b>DRC30-50-15</b>   |                  |                       | 32.5      |                 |              |               |
| <b>DRC30-100-20</b>  |                  | 1000                  | 50        |                 | 50           | Flange Roller |
| <b>DRC30-100-30</b>  |                  |                       | 32.5      |                 |              |               |
| <b>DRCF30-20-4</b>   |                  | 200                   | 1000      |                 | 50           |               |
| <b>DRCF30-50-10</b>  |                  | 500                   |           |                 |              |               |
| <b>DRCF30-100-20</b> | 1000             |                       |           |                 |              |               |

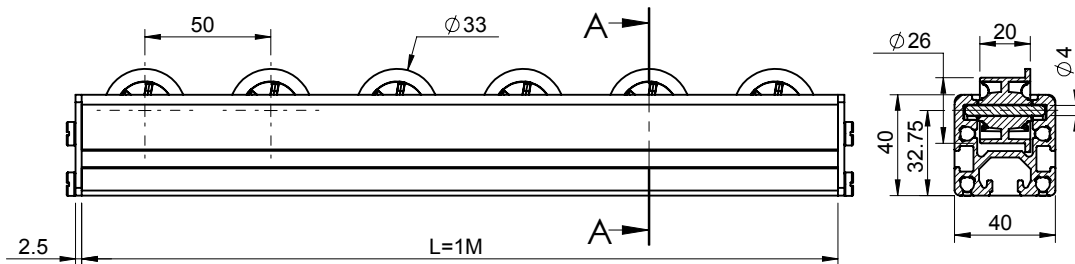
# CONVEYOR COMPONENTS

## Conveyor Accessories



| Part Code   | Section Material | Section Length (mm) L | Roller CD | Roller Material | Roller Type  |
|---|------------------|-----------------------|-----------|-----------------|--------------|
| <b>DRCAL40-100-20</b>   | Aluminium        | 1000                  | 50        | Polyamide       | Plain Roller |
| <b>DRCAL40-100-30</b>   |                  |                       | 33.5      |                 |              |
| Std.Colour for Roller is Black  |                  |                       |           |                 |              |
| Coloured Rollers are available on a minimum order. Red, Yellow, Green |                  |                       |           |                 |              |

## Conveyor Accessories



| Part Code              | Section Material | Section Length (mm) L | Roller Material | Roller Type   |
|------------------------|------------------|-----------------------|-----------------|---------------|
| <b>DRCALF40-100-20</b> | Aluminium        | 1000                  | Polyamide       | Flange Roller |
| <b>DRCALF40-150-30</b> |                  | 1500                  |                 |               |

VII



I



II



III



IV



V



VI



VII



VIII



IX



X



XI



XII



XIII



XIV



# Ideas





## Darshana Industries Pvt. Ltd.

📍 Head Office & Factory:  
Sub Plot No. 32, Final Plot No. 6,  
Ramtekdi Industrial Estate, Hadapsar,  
Pune-411 028. Maharashtra, INDIA.

☎ Tel: +91 20 2951 1572

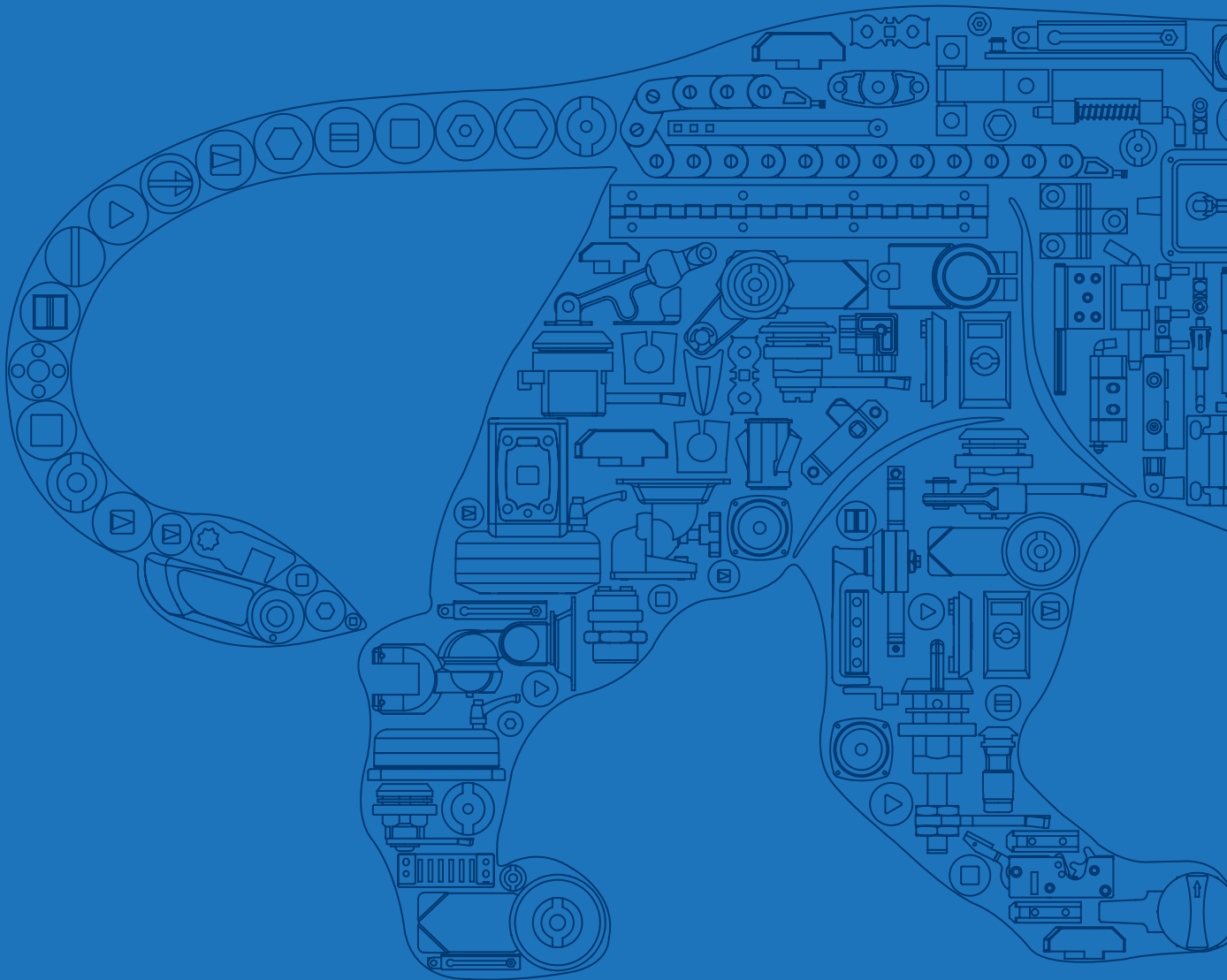
🌐 [darshanaindustries.com](http://darshanaindustries.com)

Head of Sales & Exports

👤 **Sanket Sutrave**  
✉ [ssutrave@darshanaindustries.com](mailto:ssutrave@darshanaindustries.com)

Head of Business Development

👤 **Jethan Reddy**  
✉ [jmadhireddy@darshanaindustries.com](mailto:jmadhireddy@darshanaindustries.com)



Made in India 🌐 Made for You