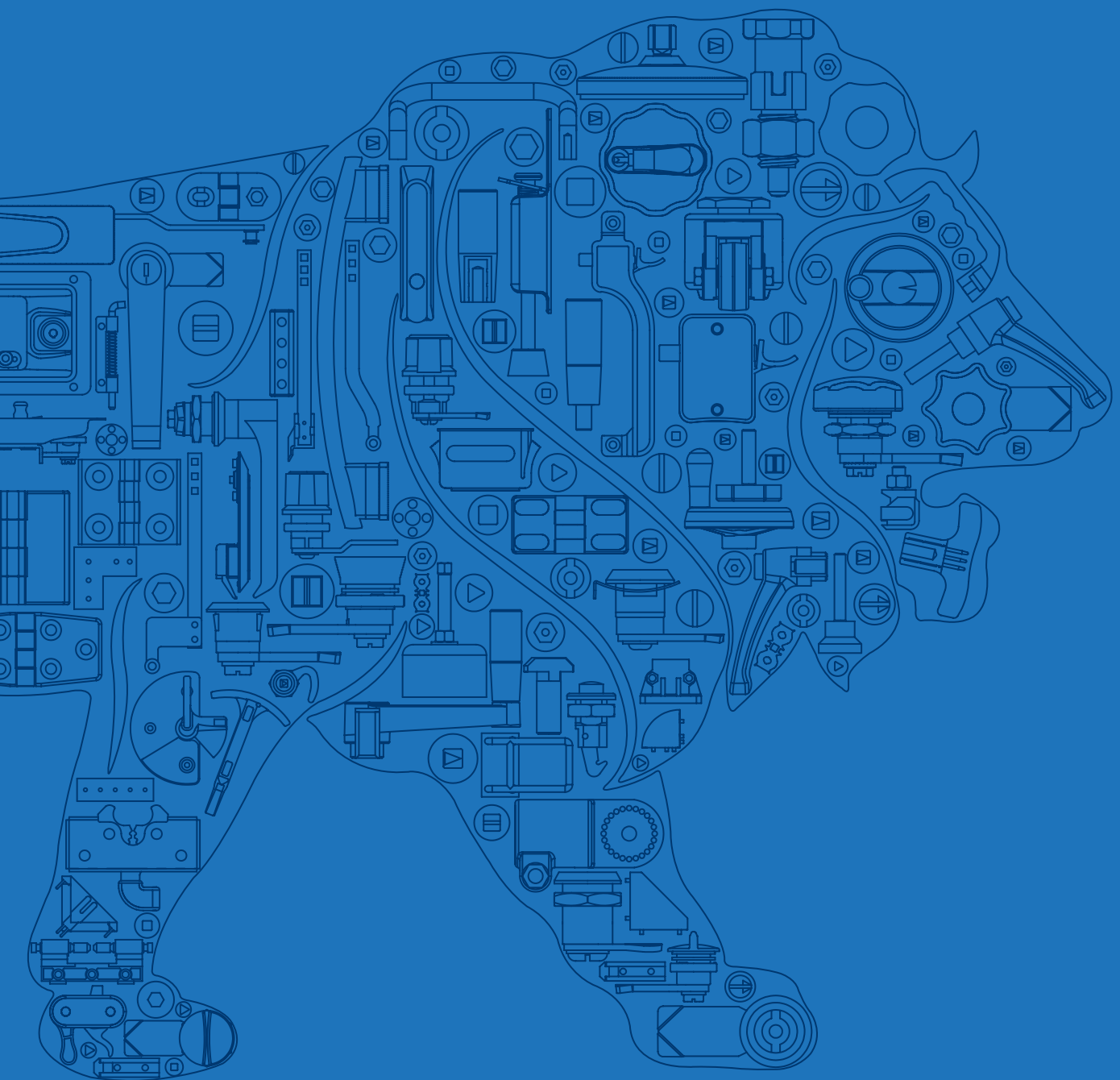


D darshana®



Made in India  Made for You

WHO WE ARE

India's Largest and Most Trusted Manufacturer of
Access Hardware and Machine Components

Founded in
1982

Highly focused on
INDIA'S
Strong Machine
Building Industry

Engineering

Tooling

Manufacturing

Sales

Two Locations in
PUNE

120,000 sq. ft.
(11,000 sq. m.)
AREA

OVER 350

People Committed to Customer Satisfaction

OVER 20 DEALERS

in India and reliable partners overseas to provide end to end
integration of parts in customer's designs

OVER 90%

of components used are

MADE-IN-HOUSE

Ensures control of quality and delivery

OUR PRESENCE IN VARIOUS SECTORS



Agriculture



Airline Industry



Automation



Automobile



Dairy



Defence



Earthmoving



Electric Panels



Food



Generator



Hospital Essentials



HVAC



Interior



Kitchen Equipment



Machine Building



Marine



Medical



Office Furniture



Pharma



Printing & Packing



Railways



Renewable Energy



Telecom



Waste Management

OUR GLOBAL PRESENCE

India

- Ahmedabad
- Aurangabad
- Bengaluru
- Chennai
- Coimbatore
- Delhi
- Goa
- Hyderabad
- Indore
- Kolhapur
- Mumbai
- Nagpur
- Nashik
- Noida
- Pune
- Punjab
- Rajkot
- Surat
- Vadodara

International

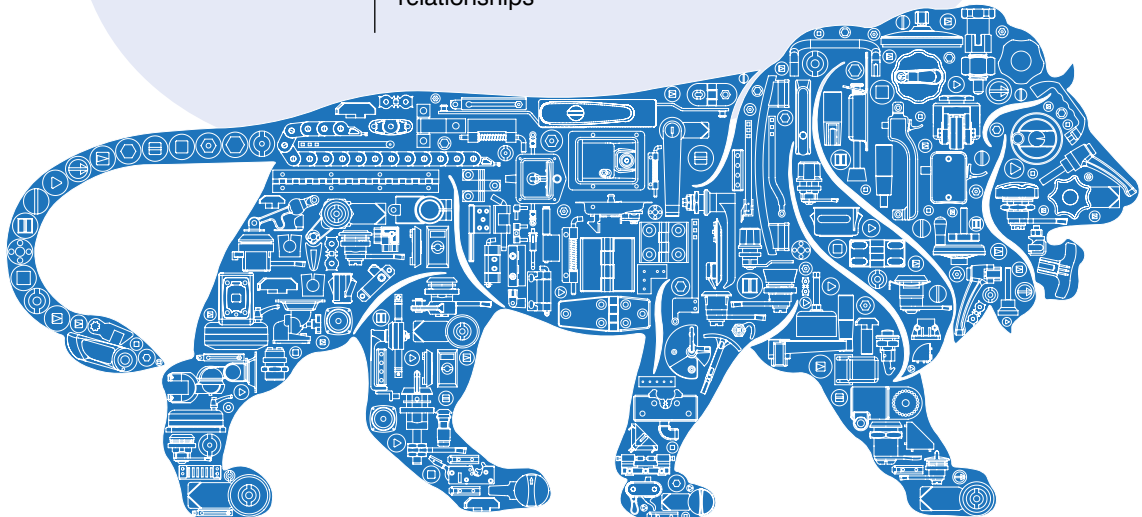
- Australia
- Canada
- Egypt
- France
- Iceland
- Ireland
- Israel
- Italy
- Kenya
- Kuwait
- Lebanon
- Malaysia
- Netherlands
- New Zealand
- Nigeria
- Oman
- Philippines
- Poland
- Saudi Arabia
- South Africa
- Spain
- Sri Lanka
- Thailand
- UAE
- United Kingdom
- Yemen
- Zambia
- USA

Vision

To be the leading trusted source of engineered machine components.

Mission

To create continuous growth opportunities through value driven product designs and operations.
We will achieve this growth through well engineered designs that ensure product reliability and efficient manufacturing operations that are committed to quality, consistency, and cost management
Customer connectivity that creates long-term relationships



Made in India  Made for You



Primary Processes in Facility 1

- Zinc Die Casting
- Injection Molding
- Powder Coating
- Laser Cutting
- CNC Machining
- Gasketing
- Key Making
- Robotic Welding
- Robotic Buffing
- Automated Assembly Lines

ISO CERTIFIED


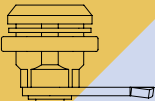
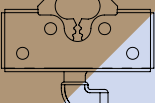
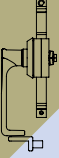
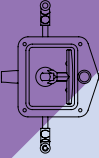
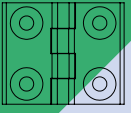
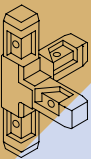
9001 : 15 | 14001 : 15 | 45001 : 15

Primary Processes in Facility 2

- Stamping Unit
- Riveting Line
- Secondary Finishing Lines
- Assembly
(Sheet Metal Components)
- Space for expansion



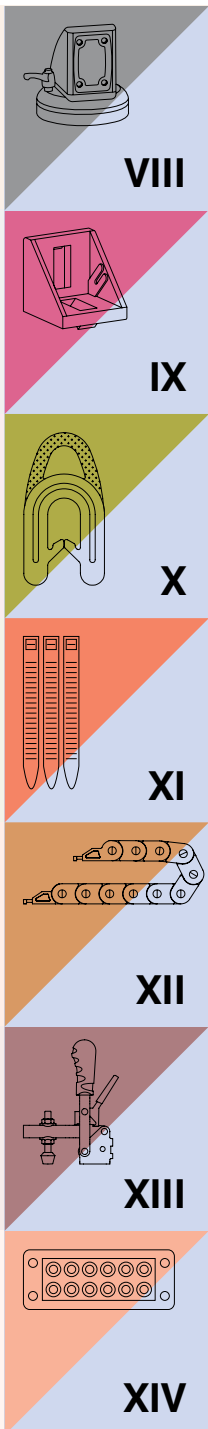
Product Categories

Colour coding for Category identification	Product Category	Category Sub Colour Shade	Page No.
 I	HANDLES		008 to 083
 II	LOCKS		084 to 119
 III	LATCHES		120 to 145
 IV	MULTI-POINT LOCKS		146 to 179
 V	CANOPY LOCKS		180 to 195
 VI	HINGES		196 to 267
 VII	CONVEYOR COMPONENTS		268 to 291

Part Code Configurator



For building the **Part Code** please fill the variables that are outlined values from the table referring the drawings.



VIII

SUPPORT ARM SYSTEM

292 to 323

IX

ALUMINIUM SECTIONS & ACCESSORIES

324 to 343

X

GASKETS

344 to 349

XI

CONDUIT ACCESSORIES & CABLE TIES

350 to 355

XII

DRAG CHAINS

356 to 361

XIII

TOGGLE CLAMPS

362 to 379

XIV

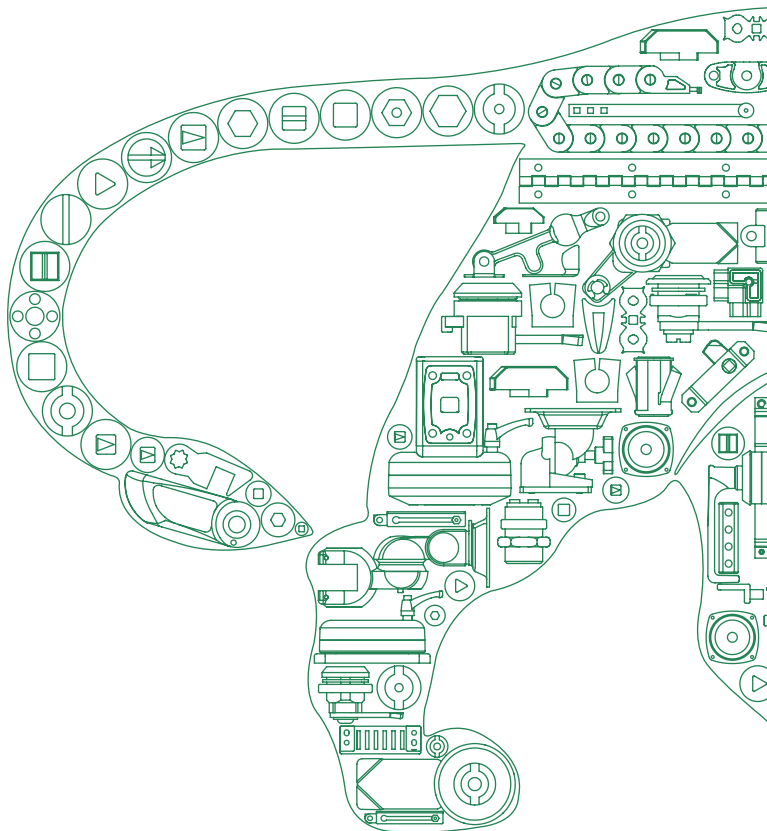
CABLE MANAGEMENT SYSTEM

380 to 385

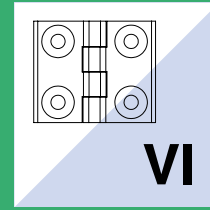
Part Code Index

Product Name	Material	Page
Flat Hinge	Polyamide	198
		199
		200
		201
		202
		203
		204
		205
		206
		207
Cabin Hinge		206
Light Duty Stay Hinge		207
Adjustable Friction Hinge		208
Exposed Hinge		209
Spring Hinge		210
Flat Hinge	Zinc, SS-304	211
	Zinc	212
		213
		214
		215
		216
		217
	Stop Hinge	
Flat Hinge	Zinc, Polyamide	219
Exposed Hinge		220
		221
		222
Side Exposed Hinge	Zinc	223
Lift off Hinge		224
		225
		226
		227
		228
		229
Concealed Hinge	Zinc, MS	230
	Zinc	231
	Zinc, MS	232
Flat Hinge	MS	233
		234
		235
	MS, SS-304	236
		237
	Flat Heavy Duty Hinge	
		239
		240
Flat Hinge	MS	241

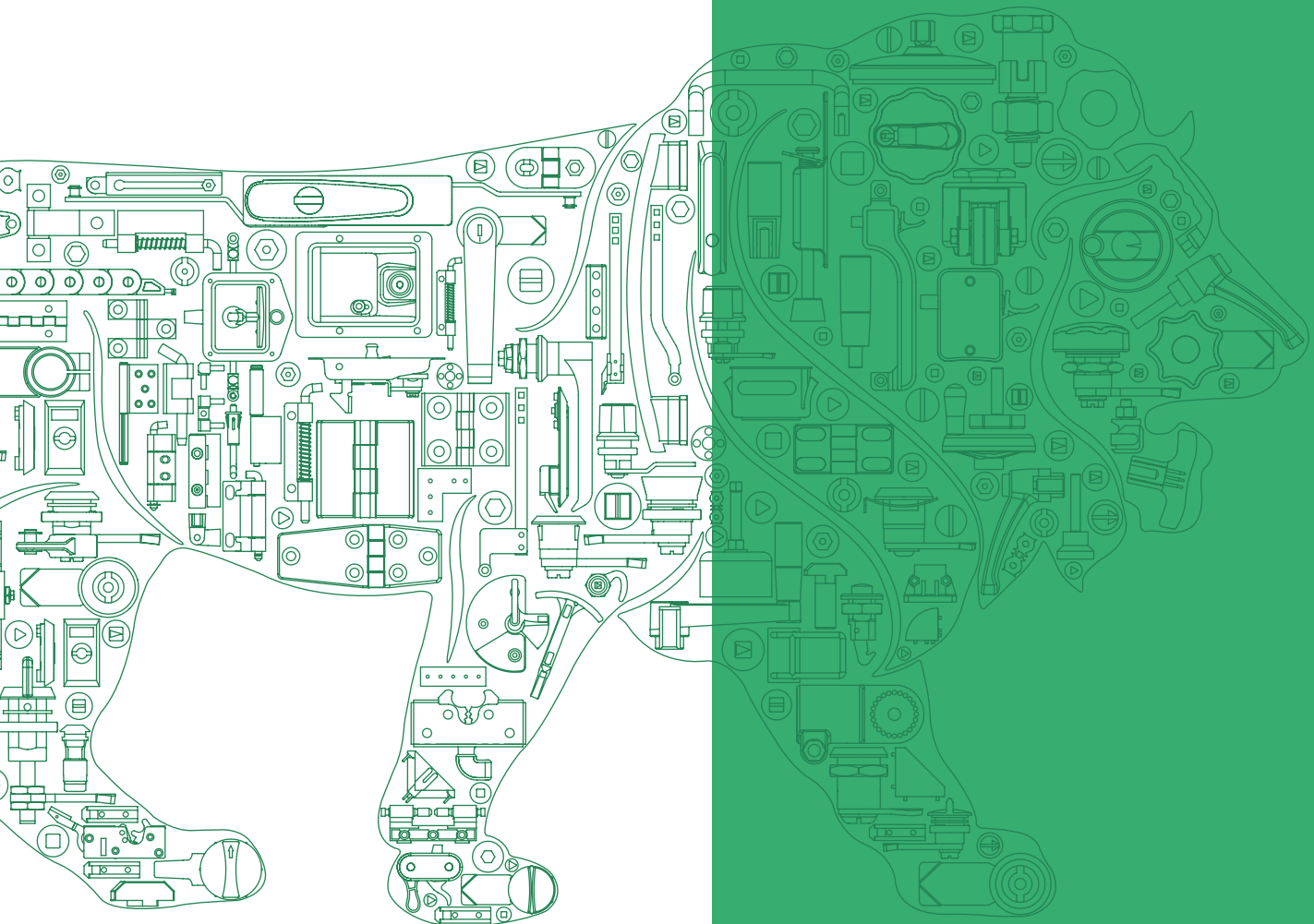
Product Name	Material	Page	
Exposed Hinge		242	
Lift off Hinge	MS, SS-304	243	
		244	
	MS	245	
Fixed Hinge	MS, SS-304	246	
		247	
Spring Return Hinge		248	
Spring Hinge	MS, SS-304	249	
		250	
		251	
		252	
		253	
		254	
	Concealed Hinge	MS, SS-304	255
			256
			257
			258
		MS	259
Concealed Hinge	MS, SS-304	260	
		261	
	MS	261	



Product Name	Material	Page
Flat Hinge	Casting MS, Casting SS-304	262
		263
	Casting MS	264
	Casting SS-304	265
	MS	266
Lift off Hinge	SS-304	267



HINGES

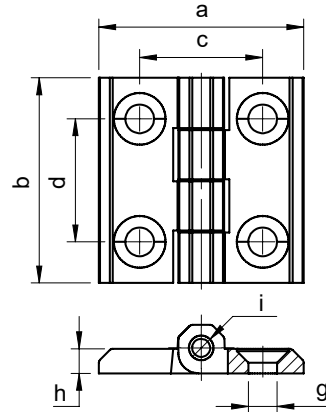


Made in India  Made for You

HINGES

Flat Hinge

Polyamide



D **H** **X** - **A**

X Hinge Material

IF Polyamide

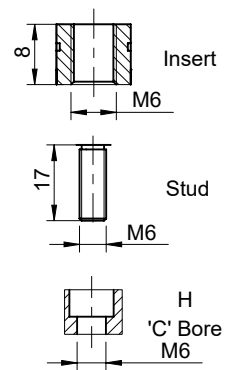
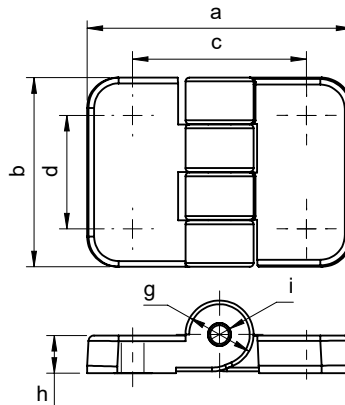
FM Zinc Alloy

X	A	a	b	c	d	g	h	i	'IF' LC (kg)		'FM' LC (kg)		
									Ax	Ra	Ax	Ra	
IF	FM	25	25	25	15	15	CSK M3	3	Ø3	Ax : 05	Ra : 08	Ax : 14	Ra : 17
		30	30	25	18	15	CSK M4	3	Ø3	Ax : 15	Ra : 20	Ax : 19	Ra : 28
		40	40	40	25	25	CSK M5	5	Ø4	Ax : 20	Ra : 21	Ax : 31	Ra : 61
		50	50	50	30	30	CSK M6	6	Ø6			Ax : 80	Ra : 75
FM		60	60	60	36	36	CSK M8	6	Ø6			Ax : 74	Ra : 74
		60-8	64	60	36	36	CSK M8	8	Ø6			Ax : 73	Ra : 71
		76	76	60	56	36	CSK M6	6	Ø6			Ax : 50	Ra : 63
		5076	76	50	56	30	CSK M6	6	Ø6				
		6089	89	60	65	36	CSK M8	8	Ø8				
		60101	101	60	77	36	CSK M8	8	Ø8				
	60117-2h	117	60	90	36	CSK M8	8	Ø8					

Finish : Black Powder Coated for Zinc

Flat Hinge

Polyamide



X Mounting Type

Hole & Hole

II Insert & Insert

SS Stud & Insert

D **H** **I** **F** - **5070** - **R** - **X**

X Mounting Type

SI Stud & Insert

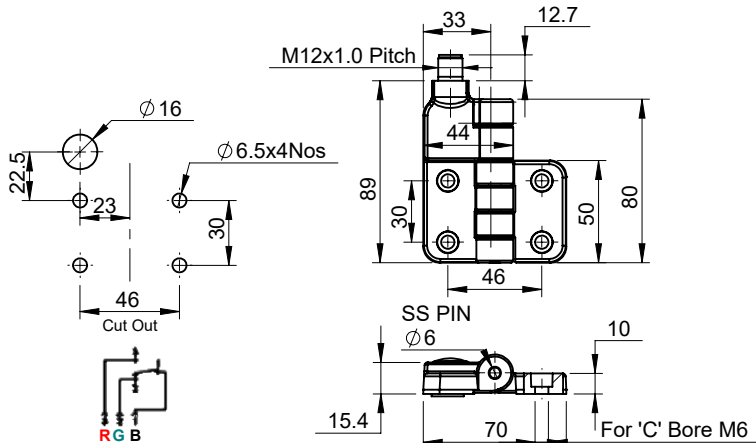
HS Hole & Stud

HI Hole & Insert

X	a	b	c	d	g	h	i	LC (kg)	
II	70	50	46	30	Ø18	10	Ø6	Ax : 16	Ra : 31
								Ax : 24	Ra : 38
								Ax : 17	Ra : 34
								Ax : 19	Ra : 34
								Ax : 21	Ra : 32
								Ax : 18	Ra : 25

Flat Hinge

Polyamide



D H I F - 8070 - E F - X

X Orientation
L Left
R Right

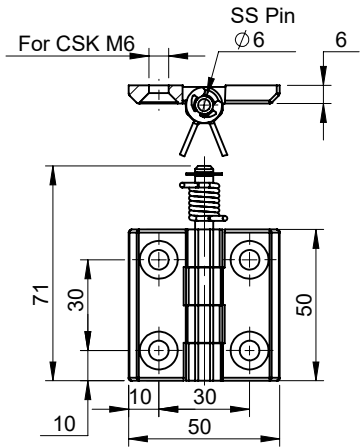
<input checked="" type="checkbox"/>	Part Code	LC (kg)	
L	DHIF-8070-EF-L	Ax :	Ra :
R	DHIF-8070-EF-R	Ax :	Ra :

Electrical Features : Insulation : 2.5kv, Use category : DC13 60Vac / 1.5 A, AC15 230Vac / 1.5A, Insulation Nominal voltage U_i : 250V, Short-circuit protection 6A / gl / gG, Thermic Powder lthe : 3A

Operating angle of the hinge is 10° under regular usage. Operating angle might change due to the decrease in mechanical life the device.

Flat Hinge

Polyamide



D H S F - 50

Part Code	LC (kg)	
DHSF-50	Ax :	Ra :

VI



I



II



III



IV



V



VI



VII



VIII



IX



X



XI



XII



XIII

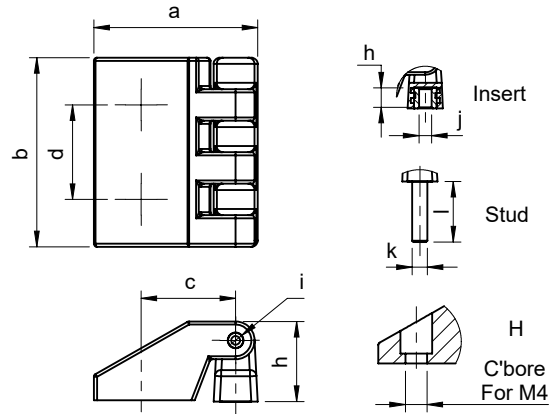


XIV

HINGES

Flat Hinge

Polyamide



X Mounting Type

- II** Insert & Insert
- SS** Stud & Insert
- SI** Stud & Insert

D H I F - 2630 - X

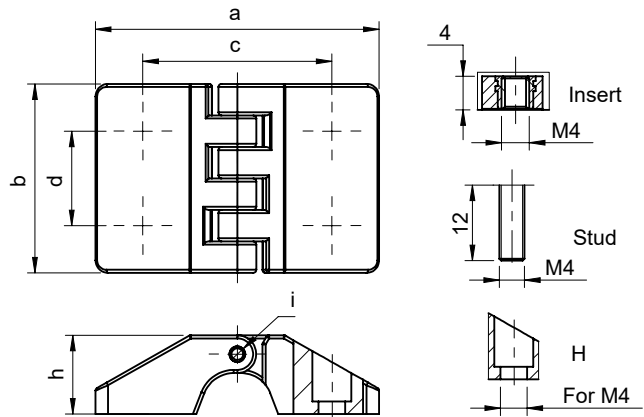
X Mounting Type

- HS** Hole & Stud
- HI** Hole & Insert

X	a	b	c	d	h	i	S	I	H	LC (kg)	
II	36	30	15	15	12.5	Ø2.5		M3/M4 x 4		Ax : 10	Ra : 09
SS							M3/M4 x 12		Ax : 13	Ra : 12	
SI							M3 x 12	M4 x 4		Ax : 13	Ra : 11
HS							M3 x 12		for M4	Ax : 09	Ra : 08
HI								M4 x 4	for M4	Ax : 12	Ra : 10

Flat Hinge

Polyamide



X Mounting Type

- Hole & Hole
- II** Insert & Insert
- SS** Stud & Insert

D H I F - a b - X

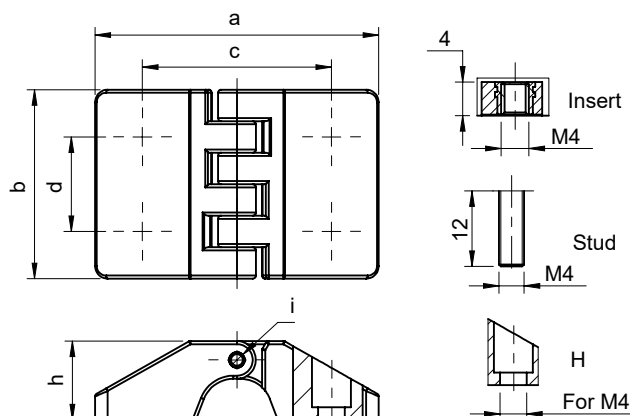
X Mounting Type

- SI** Stud & Insert
- HS** Hole & Stud
- HI** Hole & Insert

X	a	b	c	d	h	i	S	I	H	LC (kg)	
	45	30	30	15	12.5	Ø2.5			for M4	Ax : 12	Ra : 21
II								M4 x 4			
SS							M4 x 12			Ax : 07	Ra : 16
SI							M4 x 12	M4 x 4			
HS							M4 x 12		for M4	Ax : 08	Ra : 17
HI		M4 x 4	for M4								

Flat Hinge

Polyamide



X Mounting Type

Hole & Hole

II Insert & Insert

SS Stud & Insert



X Mounting Type

SI Stud & Insert

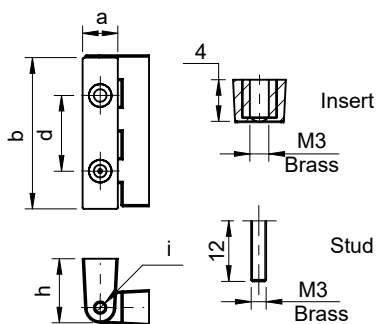
HS Hole & Stud

HI Hole & Insert

X	a	b	c	d	h	i	S	I	H	LC (kg)	
									for M4	Ax : 18	Ra : 39
II	70	48	46.5	24	20	Ø5		M4 x 4		Ax : 21	Ra : 42
SS							M4 x 12		Ax : 18	Ra : 38	
SI							M4 x 12	M4 x 4		Ax : 16	Ra : 43
HS							M4 x 12		for M4	Ax : 24	Ra : 45
HI								M4 x 4	for M4	Ax : 20	Ra : 42

Flat Hinge

Polyamide



X Mounting Type

II Insert & Insert

SS Stud & Insert

SI Stud & Insert

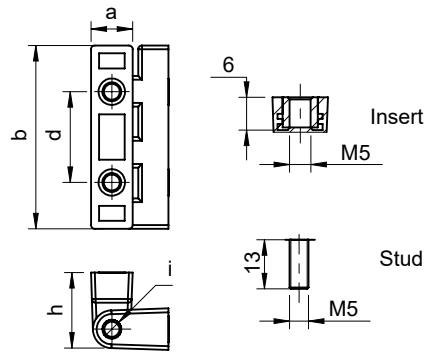


X	a	b	d	h	i	S	I	LC (kg)	
II	7	30	15	12.7	Ø2.5		M3 x 4	Ax :	Ra :
SS						M3 x 12		Ax :	Ra :
SI						M3 x 12	M3 x 4	Ax :	Ra :

HINGES

Flat Hinge

Polyamide



X Mounting Type

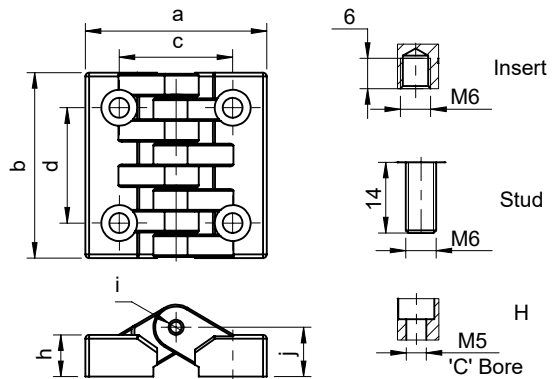
- II** Insert & Insert
- SS** Stud & Insert
- SI** Stud & Insert

D H I F - 3048 - X

X	a	b	d	h	i	S	I	LC (kg)	
II	11	48.5	24	20	Ø5		M5 x 6	Ax :	Ra :
SS						M5 x 13		Ax :	Ra :
SI						M5 x 13	M5 x 6	Ax :	Ra :

Flat Hinge

Polyamide



X Mounting Type

- Hole & Hole
- II** Insert & Insert
- SS** Stud & Insert

D H I F - 4849 - X

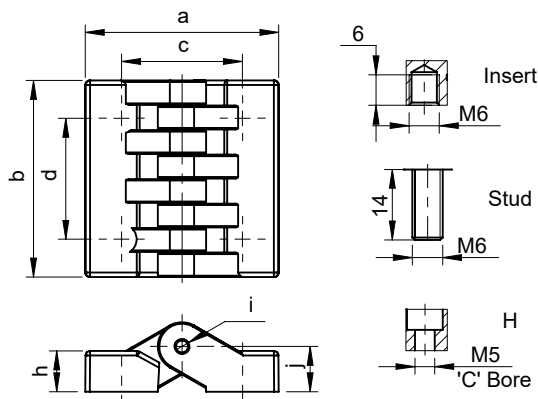
X Mounting Type

- SI** Stud & Insert
- HS** Hole & Stud
- HI** Hole & Insert

X	a	b	c	d	h	i	j	S	I	H	LC (kg)	
	48	49	30	30.5	11	Ø4	13			for M5	Ax : 33	Ra : 34
II									M6 x 6		Ax : 40	Ra : 32
SS								M6 x 14			Ax : 33	Ra : 40
SI								M6 x 14	M6 x 6		Ax : 33	Ra : 32
HS								M6 x 14		for M5	Ax : 20	Ra : 46
HI									M6 x 6	for M5	Ax : 20	Ra : 26

Flat Hinge

Polyamide



X Mounting Type

Hole & Hole

II Insert & Insert

SS Stud & Insert

D H I F - 6465 - X

X Mounting Type

SI Stud & Insert

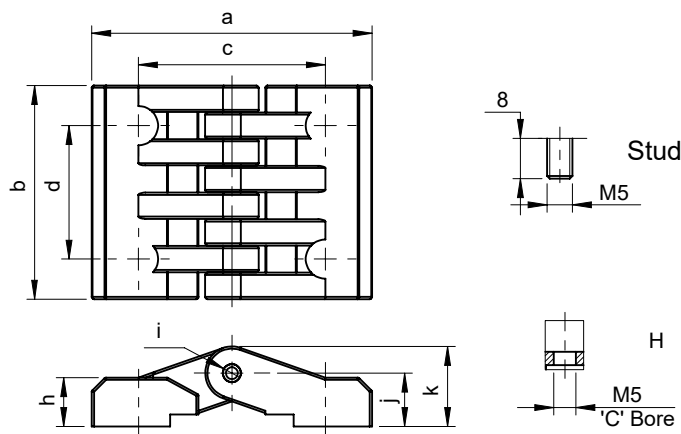
HS Hole & Stud

HI Hole & Insert

X	a	b	c	d	h	i	j	S	I	H	LC (kg)	
										for M5	Ax : 50	Ra : 48
II									M6 x 6		Ax : 40	Ra : 57
SS	64	65	40	40	13.5	Ø5	15	M6 x 14			Ax : 39	Ra : 56
SI								M6 x 14	M6 x 6		Ax : 34	Ra : 50
HS								M6 x 14		for M5	Ax : 46	Ra : 55
HI									M6 x 6	for M5	Ax : 45	Ra : 57

Flat Hinge

Polyamide



X Mounting Type

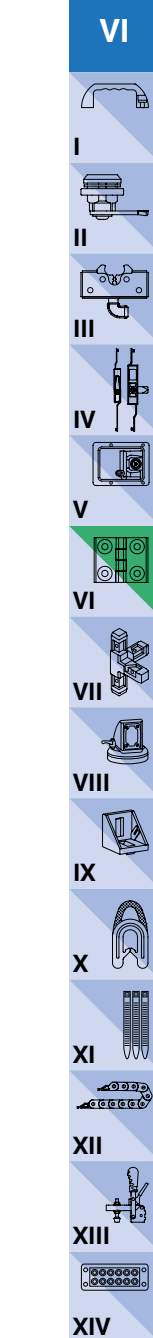
Hole & Hole

SS Stud & Insert

HS Hole & Stud

D H I F - 6348 - A - X

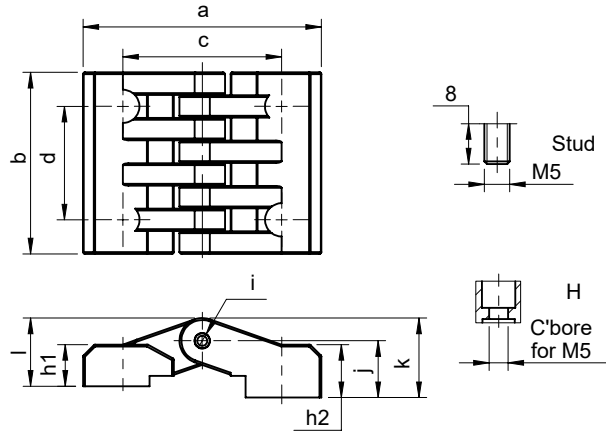
A	X	a	b	c	d	h	i	j	k	S	H	LC (kg)	
18		63	48	42	30	11	Ø4	12	18		for M5	Ax : 33	Ra : 54
	SS									M5 x 8			
	HS									M5 x 8	for M5	Ax : 33	Ra : 54
21		63	48	42	30	11	Ø4	15	21		for M5	Ax : 27	Ra : 39
	SS									M5 x 8		Ax : 28	Ra : 50
	HS									M5 x 8	for M5	Ax : 28	Ra : 54



HINGES

Flat Hinge

Polyamide



X Mounting Type

Hole & Hole

SS Stud & Insert

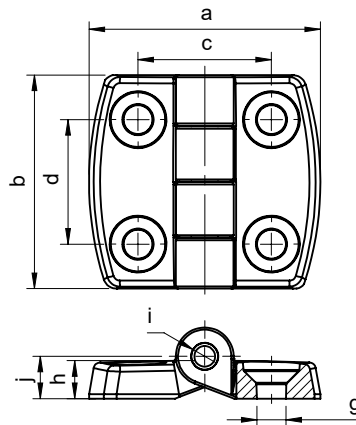
HS Hole & Stud

D	H	I	F	-	6348	-	1821	-	X
----------	----------	----------	----------	---	-------------	---	-------------	---	----------

X	a	b	c	d	h1	h2	i	j	k	l	S	H	LC (kg)	
												for M5	Ax : 40	Ra : 43
SS	63	48	42	30	11	14	Ø4	15	21	18	M5 x 8			
HS											M5 x 8	for M5		

Flat Hinge

Polyamide

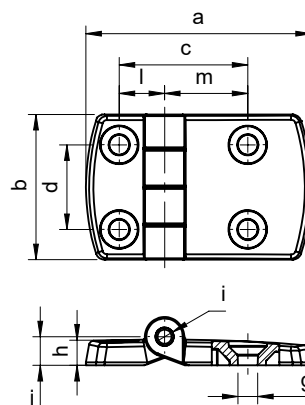


D	H	I	F	-	X
----------	----------	----------	----------	---	----------

X	a	b	c	d	h	i	j	g	LC (kg)	
4851	51	48	30	28	8.5	Ø6	9.5	CSK M6	Ax : 21	Ra : 26
4858	58		35						Ax : 23	Ra : 24
4876	76		45						Ax : 19	Ra : 24
4896	96		55						Ax : 20	Ra : 25
48115	115		65						Ax : 22	Ra : 24

Flat Hinge

Polyamide

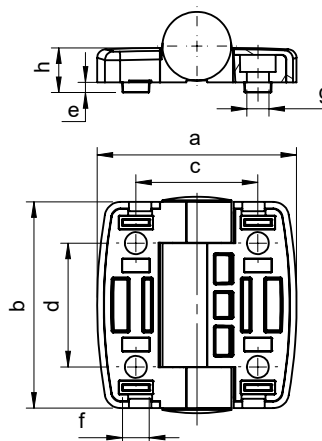


D H I F - X

X	a	b	c	d	h	i	j	g	LC (kg)	
5176	64.5	48	37.5	28	8.5	Ø6	9.5	CSK M6	Ax.: 19	Ra.: 24
5196	74.5		42.5						Ax.: 20	Ra.: 22
5158	55.5		32.5						Ax.: 21	Ra.: 25
51115	83.5		47.5						Ax.: 16	Ra.: 25
5876	68		40						Ax.: 21	Ra.: 26
5896	78		45						Ax.: 24	Ra.: 24
58115	87		50						Ax.: 19	Ra.: 24
76115	96		55						Ax.: 19	Ra.: 23
96115	106		60						Ax.: 20	Ra.: 25

Flat Hinge

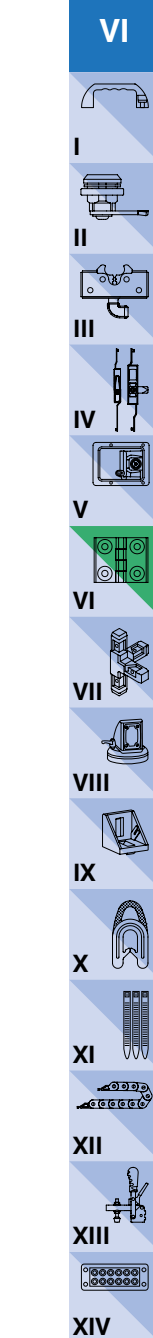
Polyamide



D H X - A

X Hinge Type
IF Flat Hinge
SP Friction Hinge

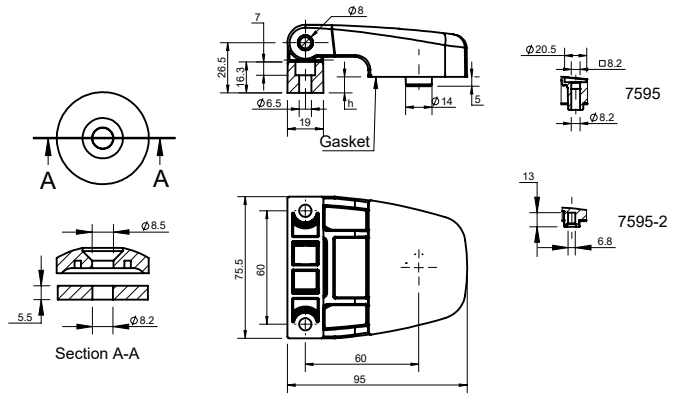
X	A	a	b	c	d	h	e	f	g	LC (kg)	
IF	6058	58	60	35.5	36	13	3	7.8	Hex M6	Ax.: 10	Ra.: 29
	6068	68	60	40.5				7.8		Ax.: 15	Ra.: 25
	6177	77.5	61	45.5				7.9		Ax.: 15	Ra.: 31
SP	6058	58	60	35.5	36	13	3		Hex M6	Ax.: 10	Ra.: 29
	6068	68	60	40.5						Ax.: 15	Ra.: 30
	6177	77.5	61	45.5						Ax.: 15	Ra.: 26



HINGES

Cabin Hinge

Polyamide

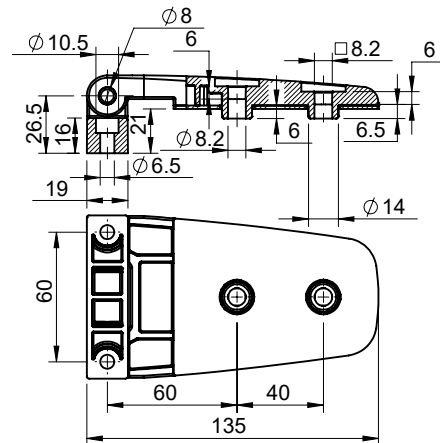


D H I F - A

A	h
7595	8.5
7595-2	21

Cabin Hinge

Polyamide

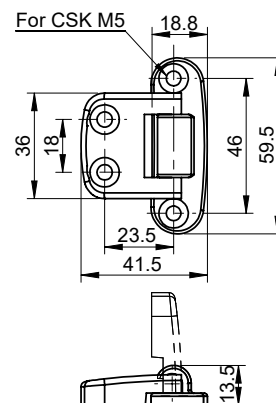


D H I F - 75135

Part Code
DHIF-75135

Light Duty Stay Hinge

Polyamide

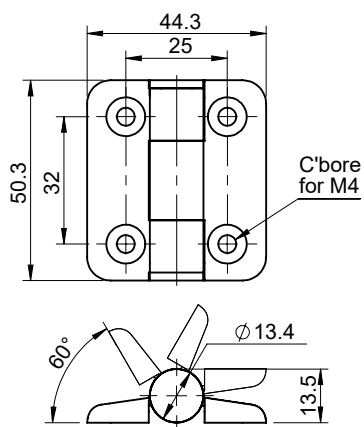


D H S P - 36

Part Code
DHSP-36

Light Duty Stay Hinge

Polyamide



D H S P - 5045

Part Code	LC (kg)	
DHSP-5045	Ax : 08	Ra : 10

VI



I



II



III



IV



V



VI



VII



VIII



IX



X



XI



XII



XIII



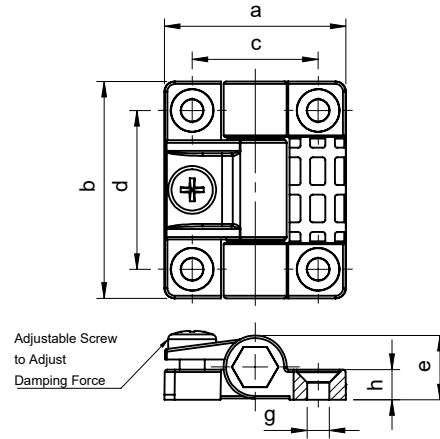
XIV



HINGES

Adjustable Friction Hinge

Polyamide

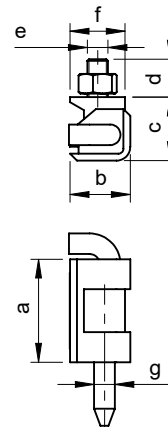
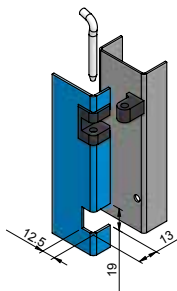


D H S P - X

<input checked="" type="checkbox"/>	a	b	c	d	h	g	e	LC (kg)	
4336	36	43	25	31.5	6	CSK M4	12.8	Ax : 09	Ra : 15
6557	57	65	38	48	5.5	CSK M6	19.2	Ax : 14	Ra : 36

Exposed Hinge

Polyamide

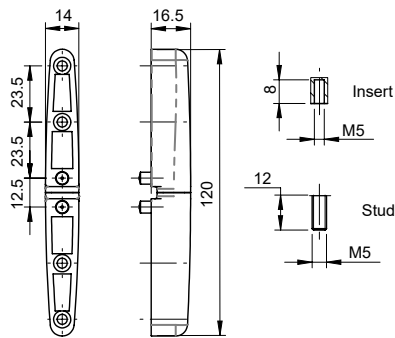


D H I - X

<input checked="" type="checkbox"/>	a	b	c	d	e	f	g
2620	26.5	18.5	17.5	12	M6	16	Ø6
3020	30		22				

Exposed Hinge

Polyamide



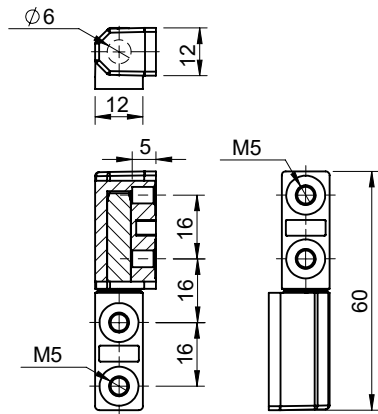
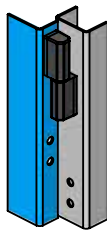
D L O H X

- X** Mounting
- I** Insert
- S** Stud
- SI** Stud & Insert

X	I	S	LC (kg)	
I	M5 x 8			
S		M5 x 12	Ax :	Ra : 11
SI	M5 x 8	M5 x 12		

Exposed Hinge

Polyamide



D L O H I - 1260

Part Code
DLOHI-1260

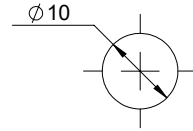
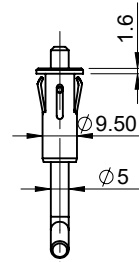
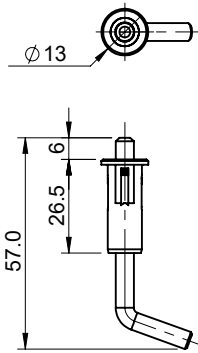
- VI**
- I**
- II**
- III**
- IV**
- V**
- VI**
- VII**
- VIII**
- IX**
- X**
- XI**
- XII**
- XIII**
- XIV**

HINGES

Spring Hinge

Polyamide

- VI
- I
- II
- III
- IV
- V
- VI
- VII
- VIII
- IX
- X
- XI
- XII
- XIII
- XIV



Cut out

Standard Sheet thk. 0.8 to 1.0mm
Available for 2.0mm Sheet thk.



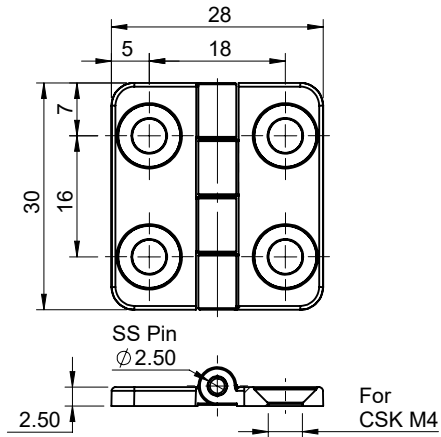
Cut Out
Drill Hole Ø6.6

D P S H I - X

<input checked="" type="checkbox"/>	Description
5	Without Bush
5B	With Bush

Flat Hinge

Zinc, SS-304



D H X - 2830

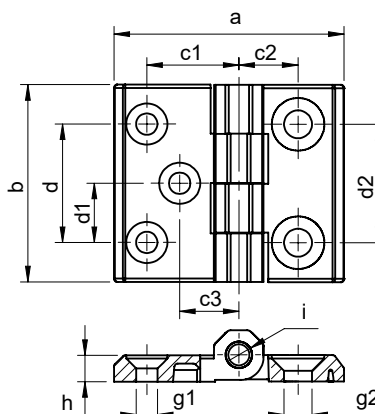
Hinge Material
FM Zinc Alloy
IS SS-304

<input checked="" type="checkbox"/>	LC (kg)	
FM	Ax : 22	Ra : 16
IS	Ax : 45	Ra : 30

Finish : Black Powder Coated for Zinc. | Electro Polishing for SS-304.

Flat Hinge

Zinc



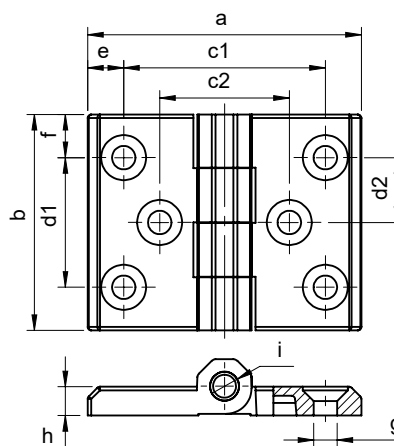
D H F M - X

X	a	b	c1	c2	c3	d	d1	g1	g2	h	i	LC (kg)	
6070	70	60	28	18	18	36	18	CSK M6	CSK M8	8	Ø8	Ax : 80	Ra : 75
6082-8-3H	82.5		32.5	26									
6088-8-3H	88.5		38.5	28									
60103-3H	103		45	32.5	25								
60109-3H	109		45	38.5									
6090	90		44	18									

Finish : Black Powder Coated.

Flat Hinge

Zinc



D H F M - X

X	a	b	c1	c2	d1	d2	e	f	g	h	i	LC (kg)	
76-8-3H	76	60	56	36	36	18	10	12	CSK M6	8	Ø8	Ax : 80	Ra : 90
60117	117		90	49.5			13.5		CSK M8				

Finish : Black Powder Coated.

VI



I



II



III



IV



V



VI



VII



VIII



IX



X



XI



XII



XIII



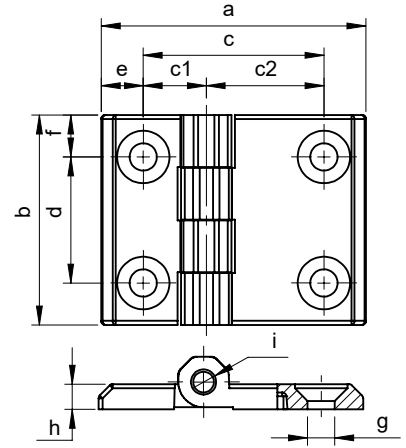
XIV



HINGES

Flat Hinge

Zinc



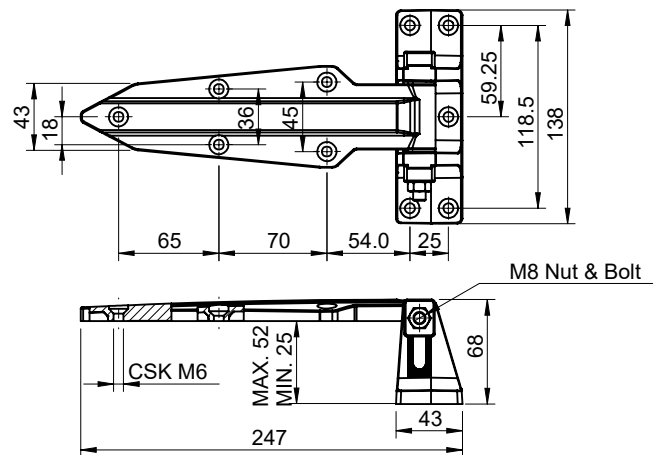
D H F M - X

X	a	b	c	c1	c2	d	e	f	g	h	i	LC (kg)	
68	68	60	46	18	28	36	12		CSK M6	6	Ø6	Ax : 70	Ra : 65
5063	63	50	43	15	30	10							
5074	74.5		52.5	37.5			15						
5087	87.5	60	65.5	37.5	28	12	12	CSK M8	8	Ø8			
6076-8	76.5		50.5	32.5	18								
6082-8	82.5		56.5	38.5	32.5								
6095	95		71	38.5									
60103	103		77.5	32.5	45								
60109	109	83.5	38.5	45									
6090-2H	90	62	18	44	14								

Finish : Black Powder Coated.

Flat Hinge

Zinc



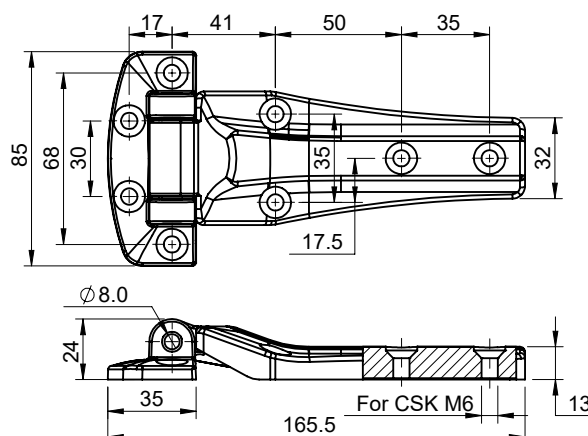
D H I Z - 138247

Part Code	LC (kg)	
DHIZ-138247	Ax : 81	Ra : 101

Finish : STPC

Flat Hinge

Zinc



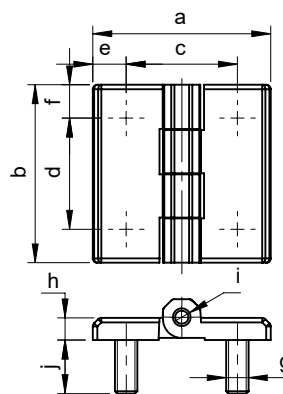
D H I Z - 85165 - F

F Finish
Black Powder Coated
STPC Silver Powder Coated

Part Code	LC (kg)	
DHIZ-85165	Ax : 81	Ra : 101
DHIZ-85165-STPC	Ax : 81	Ra : 101

Flat Hinge

Zinc



D H F M - X

X	a	b	c	d	e	f	g	j	h	i	LC (kg)	
40S	40	40	25	25	7.5	7.5	M5	8	5	Ø4	Ax : 31	Ra : 44
40S-8								12				
50S	50	50	30	30	10	10	M6	15	6	Ø6	Ax : 36	Ra : 67
76S	76	60	56	36	10	12	M6	15	6	Ø6	Ax : 40	Ra : 60
60-6-S8	60	60	36	36	12	12	M8	19	6	Ø6	Ax : 71	Ra : 80
60-8-S8	64	60	36	36	14	12	M8	19	8	Ø8		
60-8-S8-12	64	60	36	36	14	12	M8	12	8	Ø8	Ax : 71	Ra : 86
5076S	76	50	56	30	10	10	M6	17	6	Ø6	Ax : 52	Ra : 76
60117-S	117	60	90	36	13.5	12	M8	19	8	Ø8	Ax : 57	Ra : 102

Finish : Black Powder Coated.

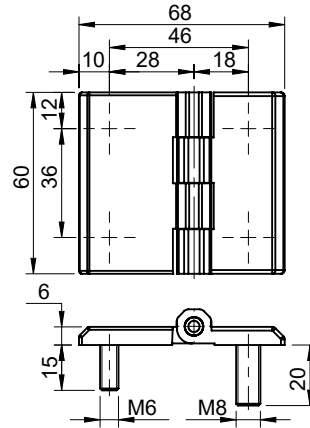
VI



HINGES

Flat Hinge

Zinc

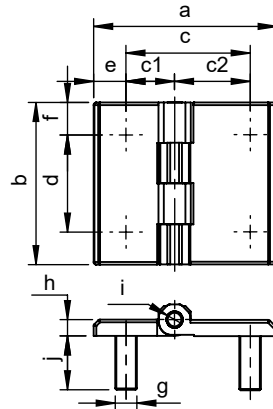


D H F M - 68 S

Part Code	LC (kg)	
DHFM-68S	Ax : 70	Ra : 81
Finish : Black Powder Coated.		

Flat Hinge

Zinc



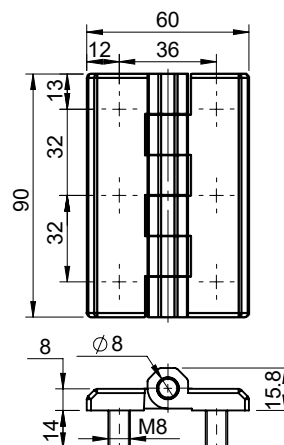
D H F M - X

X	a	b	c	c1	c2	d	e	f	g	j	h	i	LC (kg)	
68-S8	68	60	46	18	28	36	12	12	M8	20	6	Ø6	Ax : 80	Ra : 82
5063S	63	50	43	15		30	10		M6	17			Ax : 91	Ra : 60
6090S	90	60	63	18	45	36	14		M8	19	8	Ø8	Ax : 60	Ra : 81

Finish : Black Powder Coated.

Flat Hinge

Zinc



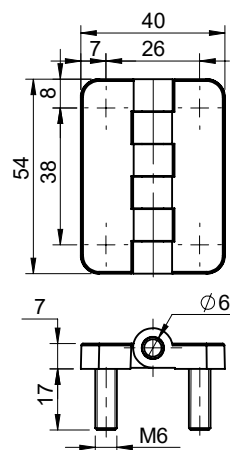
D H F M - 9060 S

Part Code	LC (kg)	
DHFM-9060S	Ax : 190	Ra : 176

Finish : Black Powder Coated.

Flat Hinge

Zinc



D H F M - 5440 - S - F

F Finish
PC Black Powder Coated
SPC Silver Powder Coated

Part Code	LC (kg)	
DHFM-5440-S-PC	Ax :	Ra :
DHFM-5440-S-SPC	Ax :	Ra :

VI



I



II



III



IV



V



VI



VII



VIII



IX



X



XI



XII



XIII



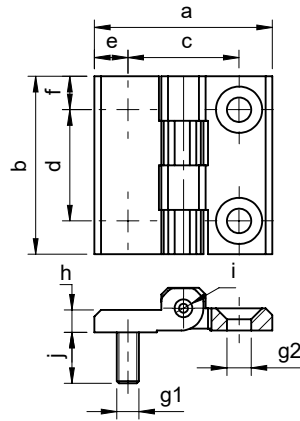
XIV



HINGES

Flat Hinge

Zinc



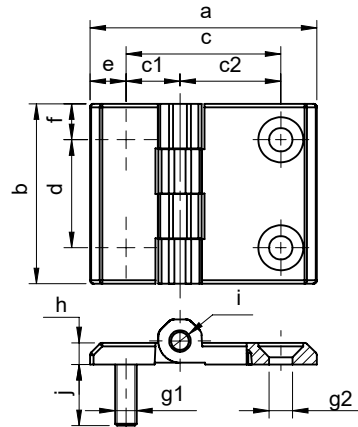
D H F M - X - S H

X	a	b	c	d	e	f	g1	g2	j	h	i	LC (kg)	
40	40	40	25	25	7.5	7.5	M5	CSK M5	11	5	Ø4	Ax : 42	Ra : 44
50	50	50	30	30	10	10	M6	CSK M6	16	6	Ø6	Ax : 35	Ra : 67
60-8	64	60	36	36	14	12	M8	CSK M8	12	8	Ø8	Ax : 71	Ra : 79
60-6	60	60	36	36	12	12	M8		19			Ax : 70	Ra : 69
5076	76	50	56	30	10	10	M6	CSK M6	17	6	Ø6	Ax : 37	Ra : 68
76	76	60	56	36	10	12	M6		16			Ax : 56	Ra : 61

Finish : Black Powder Coated.

Flat Hinge

Zinc



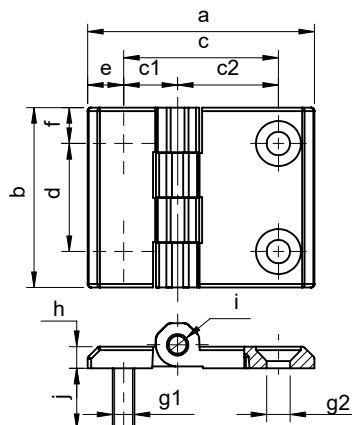
D H F M - X - S H

X	a	b	c	c1	c2	d	e	f	g1	g2	j	h	i	LC (kg)	
5025	63	50	43	15	28	30	10	10	M6	CSK M6	17	6	Ø6	Ax : 36	Ra : 63
5032				28	15									Ax : 40	Ra : 53
5074	74.5		52.5	15	37.5										
5087	87.5		65.5	28											

Finish : Black Powder Coated.

Flat Hinge

Zinc



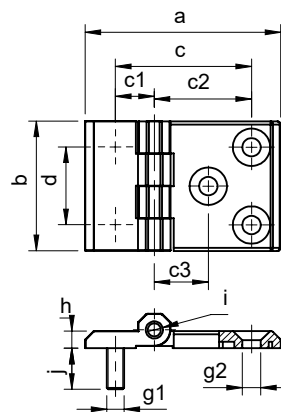
D H F M - X - S H

X	a	b	c	c1	c2	d	e	f	g1	g2	j	h	i	LC (kg)	
6076	68	60	46	18	28	36	12	12	M8	CSK M8	20	8	Ø8	Ax : 36	Ra : 63
6076-8-SH	76.5		50.5		32.5		14								
6082-8-SH	82.5		56.5	38.5											
60103-SH	103		77.5	32.5	13.5										
60109-SH	109		83.5	38.5											
68-SH-S6	68		46	28	18		10		M6		16				
68-SH-S8		M8				22									

Finish : Black Powder Coated.

Flat Hinge

Zinc



D H F M - X - S H

X	a	b	c	c1	c2	c3	d	g1	g2	j	h	i	LC (kg)	
6090	90	60	63	18	45	25	36	M8	M8	19	8	Ø8	Ax : 67	Ra : 85
60117	117		90	45									Ax : 57	Ra : 88

Finish : Black Powder Coated.

VI



I



II



III



IV



V



VI



VII



VIII



IX



X



XI



XII



XIII



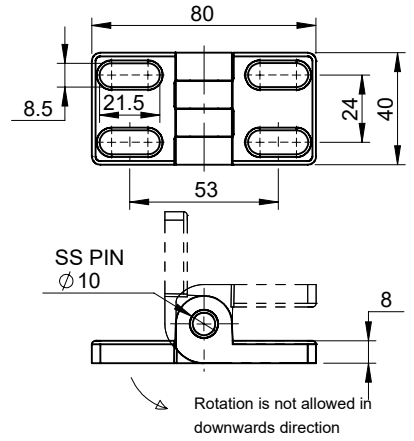
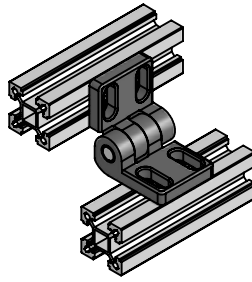
XIV



HINGES

Stop Hinge

Zinc



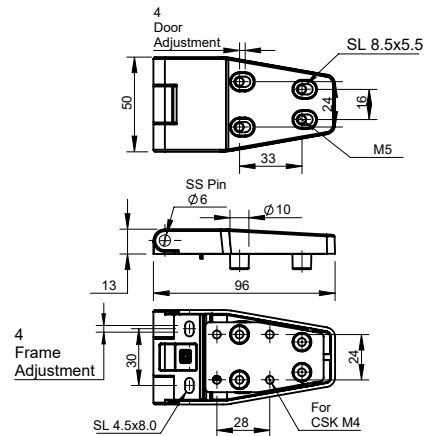
D H I Z - 8040

Part Code	LC (kg)	
DHIZ-8040	Ax : 23	Ra : 37

Finish : Black Powder Coated.

Flat Hinge

Zinc, Polyamide



D H X - 5096 - A D J - 4

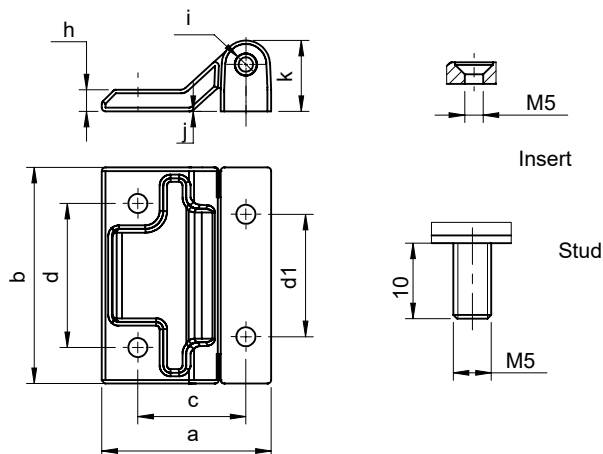
X Hinge Material
FM Zinc
IP Polyamide

Part Code	LC (kg)	
DHX-5096-ADJ-4	Ax : 23	Ra : 37

Finish : Black Powder Coated for Zinc.

Exposed Hinge

Zinc



D H I Z - 4760 - X - A

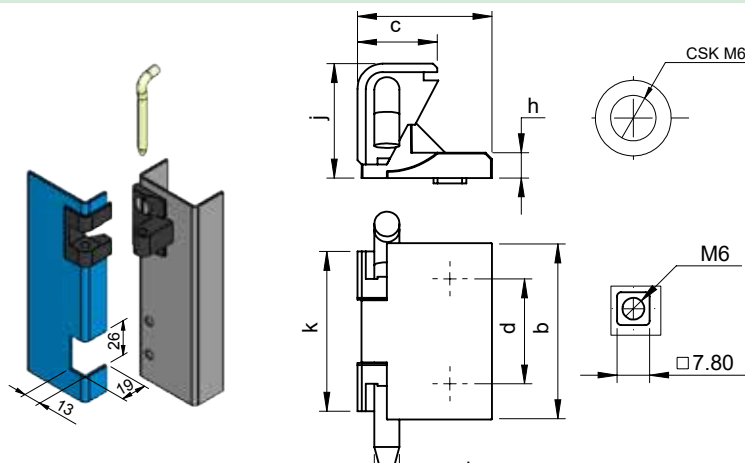
X Mounting
S Stud
H Hole

X	A	a	b	c	d	d1	j	h	i	k	S	H	
S	20	47	60	30	34	40		6	Ø6	20	M5 x 10		
H	30						10				30		CSK M5
H	20									20			

Finish : Black Powder Coated.

Exposed Hinge

Zinc



D H I Z - 3825 - X - F

F Finish
CH Chrome Plated
PC Black Powder Coated

X	a	b	c	d	j	h	i	k
SQ	31	42	19	25	27.5	6	Ø6	38
		42.5						38

VI



I



II



III



IV



V



VI



VII



VIII



IX



X



XI



XII



XIII



XIV

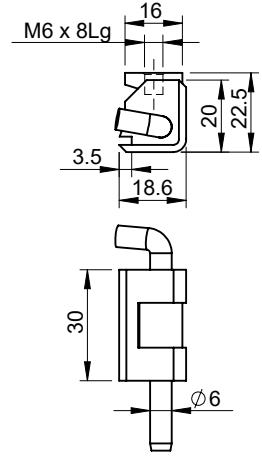
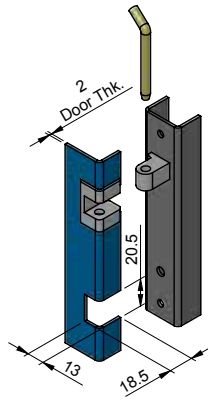
HINGES

Exposed Hinge

Zinc

VI

- I
- II
- III
- IV
- V
- VI
- VII
- VIII
- IX
- X
- XI
- XII
- XIII
- XIV



D H I Z - X

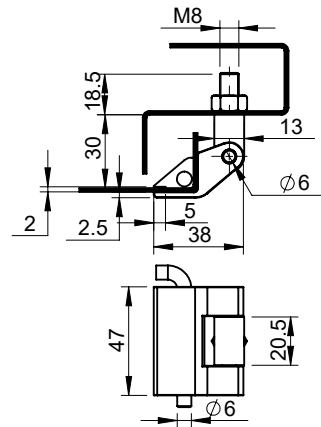
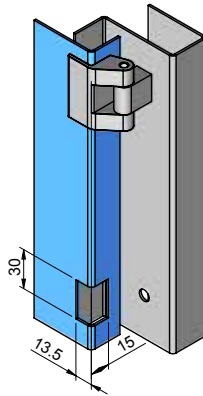
X	Hinge Material, Finish	Pin Material, Finish	LC (kg)	
3022	Zinc, Black PC	MS, BZ	Ax : 15	Ra : 12
3020-P-MS				
3020-CH-P-D	Zinc, Chrome	Delrin		

Finish : Black Powder Coated.

Exposed Hinge

Zinc

- X
- XI
- XII
- XIII
- XIV



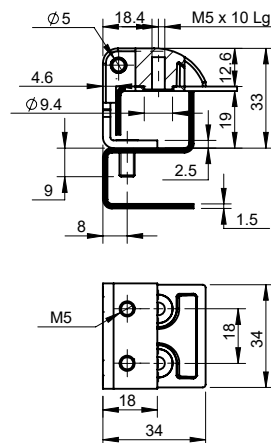
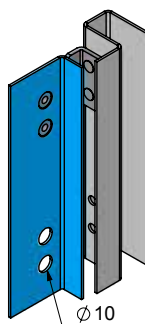
D H I Z - 4638

Part Code	LC (kg)	
DHIZ-4638	Ax : 18	Ra : 15

Finish : Black Powder Coated.

Exposed Hinge

Zinc



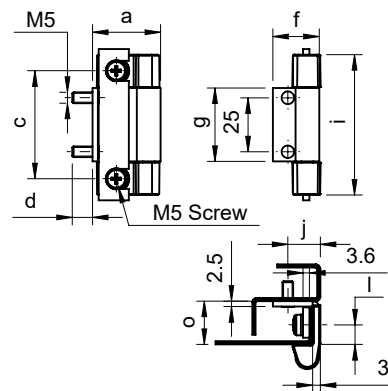
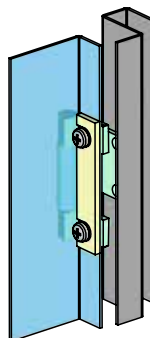
D H I M - 3433 - P C

Part Code	LC (kg)	
DHIM-3433-PC	Ax : 18	Ra : 15

Finish : Black Powder Coated.

Exposed Hinge

Zinc



D H I M - X

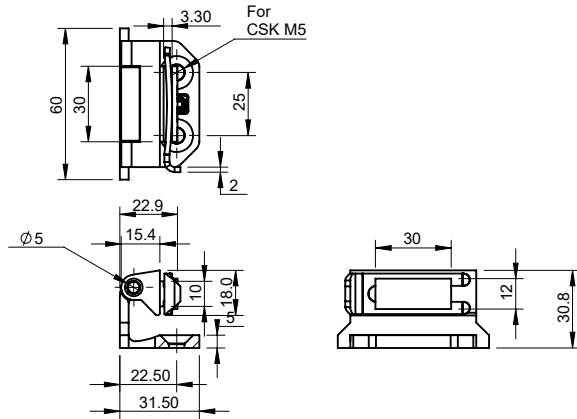
X	a	b	c	d	f	g	i	j	l	o
5025-PC	31.5		50	9	21.5	34	65	15	9.5	20
5025-A-PC	36.5	9.3								
7525-PC	36.5		75	9.3	22.5	28	100	19	11	22.5

Finish : Black Powder Coated.

HINGES

Exposed Hinge

Zinc

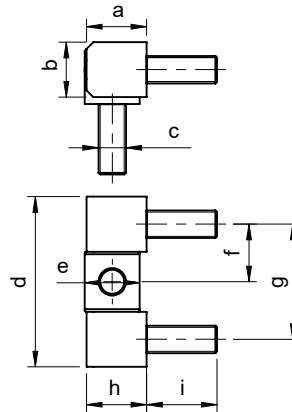


D H I Z - 5034 - P C

Part Code	LC (kg)	
DHIZ-5034-PC	Ax : 20	Ra : 18
Finish : Black Powder Coated.		

Side Exposed Hinge

Zinc



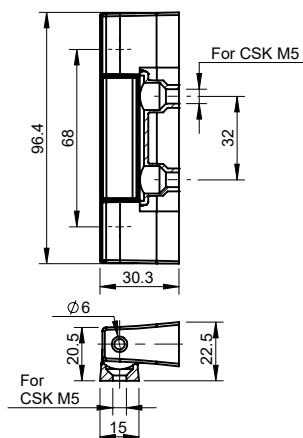
D H I Z - A

A	a	b	c	d	e	f	g	h	i
16-8-3-20	17.5	16	M8	50	16	16.75	33.5	17.5	20
16-8-3-12				49.6					
1723-8-3									
12-06-2003	13.5	12	M6	39	12	13.5	27	13.5	16
1214-6-3									

Finish : Black Powder Coated.

Side Exposed Hinge

Zinc



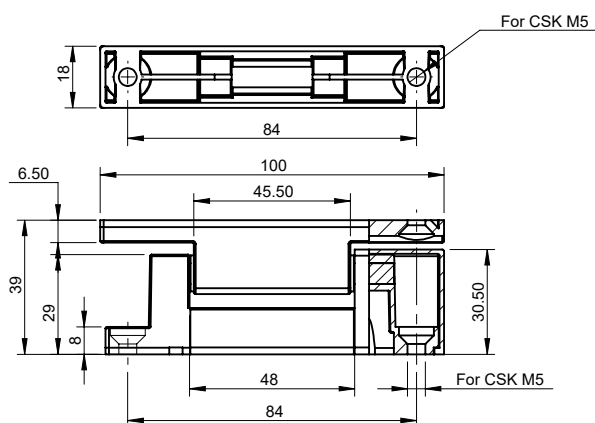
D H I Z - 9630 - F

F Finish
CH Chrome Plated
SPC Silver Powder Coated

Part Code	LC (kg)	
DHIZ-9630-F	Ax : 45	Ra : 38

Side Exposed Hinge

Zinc



D H I Z - 10039 - S P C

Part Code	LC (kg)	
DHIZ-10039-SPC	Ax : 45	Ra : 38

Finish : Silver Powder Coated.

VI



I



II



III



IV



V



VI



VII



VIII



IX



X



XI



XII



XIII



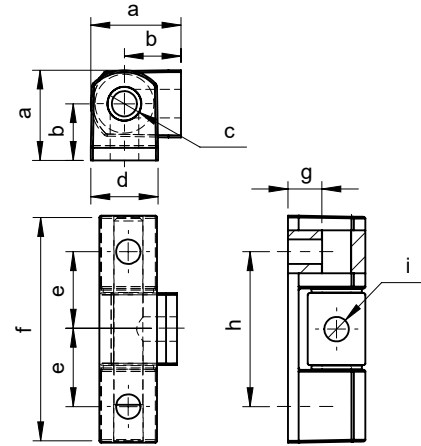
XIV



HINGES

Side Exposed Hinge

Zinc



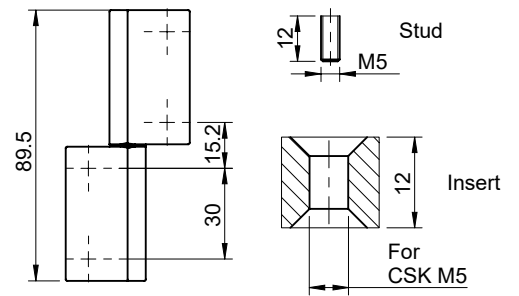
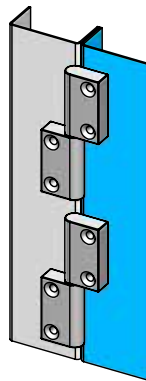
D H I Z - X

X	a	b	c	d	e	f	g	h	i
6321	21.5	13.5	Ø8	16	21.5	63	9	43	M8
4519	19	12.2	Ø6	14	16	45		32	M6

Finish : Black Powder Coated.

Lift off Hinge

Zinc



D M L O H - 2790 - X

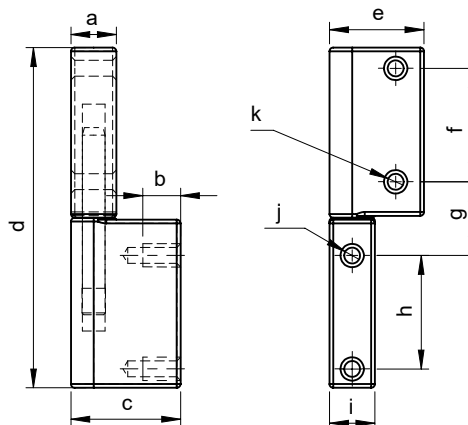
X Finish
HH Hole & Hole
SS Studs & Studs

Part Code	LC (kg)	
DMLOH-2790-X	Ax : 27	Ra : 16

Finish : Black Powder Coated.

Lift off Hinge

Zinc



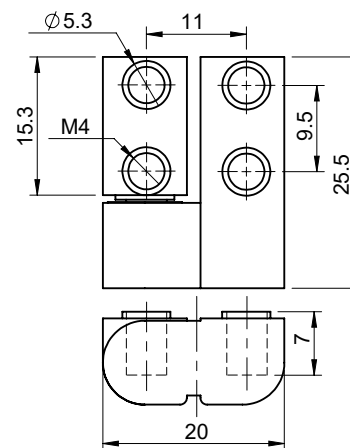
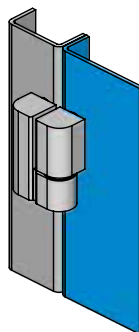
D M L O H - X

X	a	b	c	d	e	f	g	h	i	j	k
4290	12	10	29	89.5	25	30	19.5	30	12	M5	M5 Through
3890				90	25						M5 X10
4690				90	29						M5 X10
2780			22	80	17	20	20	20		M6	M6 x 10Lg
2280			17								
3280			22								

Finish : Black Powder Coated.

Lift off Hinge

Zinc



D H L M - 25 - X

X Orientation
L Left
R Right

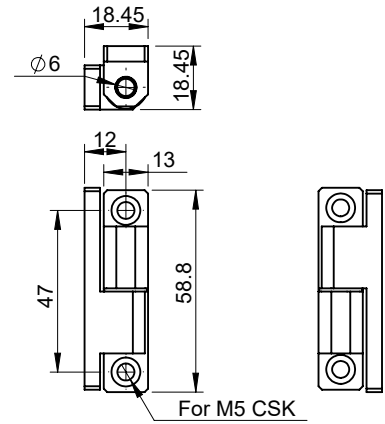
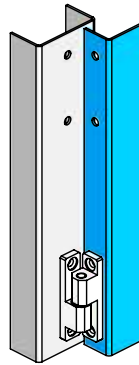
Part Code	LC (kg)	
DHLM-25-X	Ax : 37	Ra : 14

Finish : Black Powder Coated.

HINGES

Lift off Hinge

Zinc

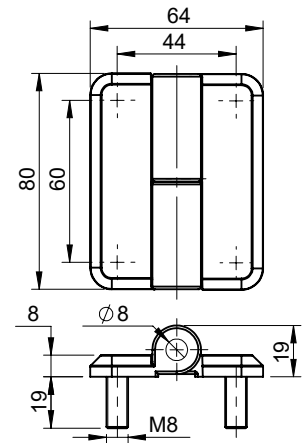


D M L O H - 1312

Part Code	LC (kg)	
DMLOH-1312	Ax : 32	Ra : 19
Finish : Chrome Plated.		

Lift off Hinge

Zinc



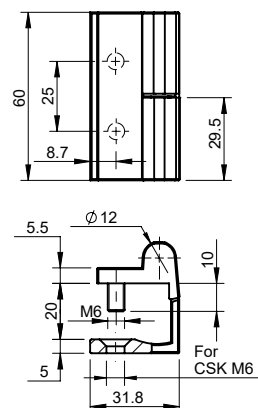
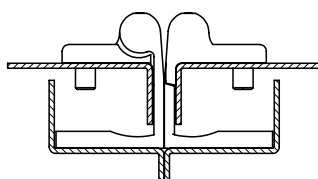
D H L M - 8060 - ab - X - P C

X Orientation
L Left
R Right

Part Code	LC (kg)	
DHLM-8060-ab-X-PC	Ax : 48	Ra : 46
Add 'GN' in place of 'ab' for adding Grease Nipple		
Finish : Black Powder Coated.		

Lift off Hinge

Zinc



IP Mount

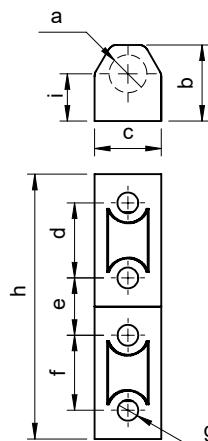
D H L Z - 6040 - X

X Orientation
L Left
R Right

Part Code	LC (kg)	
DHLZ-6040-X	Ax : 18	Ra : 12
'CD-25-M6' is Special Mount for 'IP'		
Finish : Black Powder Coated.		

Lift off Hinge

Zinc



D H L Z - X

X	a	b	c	d	e	f	g	h	i
1142	Pin Ø6	12	10.6	12	9	12	M4 x 4.5 Deep	42	7.5
1564	Pin Ø8	17.5	15	19	13.3	19	M5 x6 Deep	64	9.8

Finish : Black Powder Coated.

VI



I



II



III



IV



V



VI



VII



VIII



IX



X



XI



XII



XIII



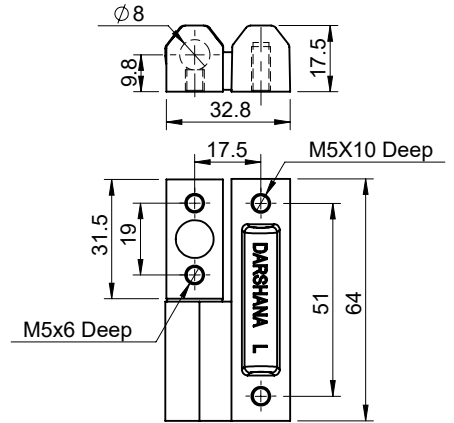
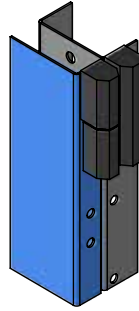
XIV



HINGES

Lift off Hinge

Zinc



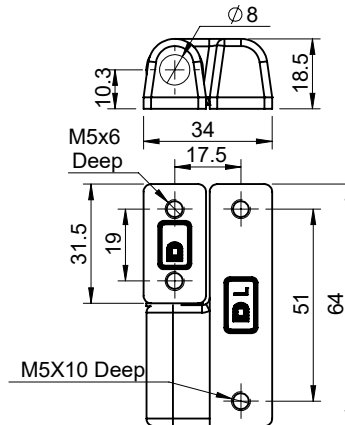
D H L Z - 3264 - X

X Orientation
L Left
R Right

Part Code	LC (kg)	
DHLZ-3264-X	Ax : 18	Ra : 12
Finish : Black Powder Coated.		

Lift off Hinge

SS-304



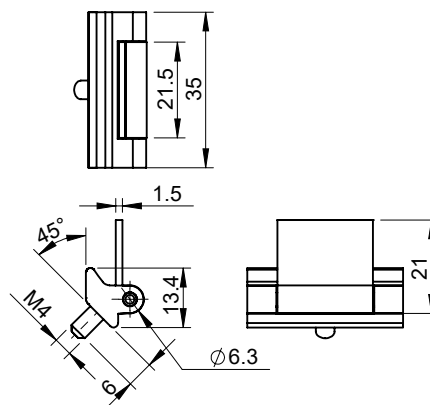
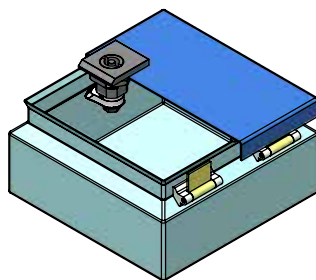
D H L O S - 3264 - X

X Orientation
L Left
R Right

Part Code
DHLOS-3264-X
Finish : Electro Polishing

Concealed Hinge

Zinc, MS

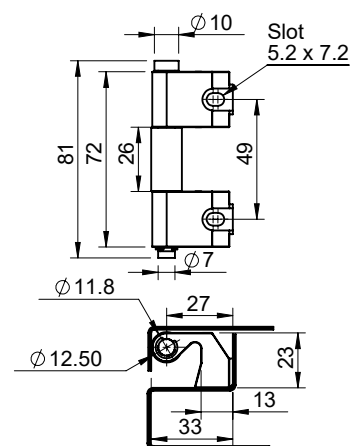
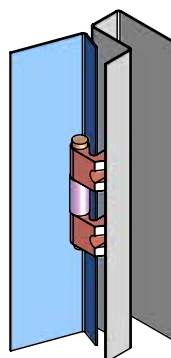


D H I Z - 3521

Part Code
DHLZ-3521-X
Finish : RAW for Zinc Blue Zinc Plating for MS

Concealed Hinge

Zinc



D H I Z - 3475

Part Code
DHIZ-3475
Finish : RAW for Zinc Blue Zinc Plating for MS

VI



I



II



III



IV



V



VI



VII



VIII



IX



X



XI



XII



XIII



XIV

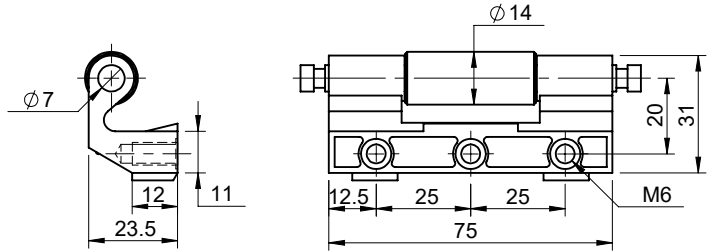


HINGES

Concealed Hinge

Zinc, MS

VI



D B A - 7534 - Z

Part Code	
DB-7534-Z	Roller version : DBR-7534-Z
Finish : RAW for Zinc Blue Zinc Plating for MS	

Flat Hinge

MS

I

II

III

IV

V

VI

VII

VIII

IX

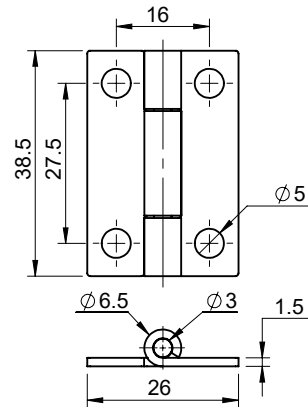
X

XI

XII

XIII

XIV



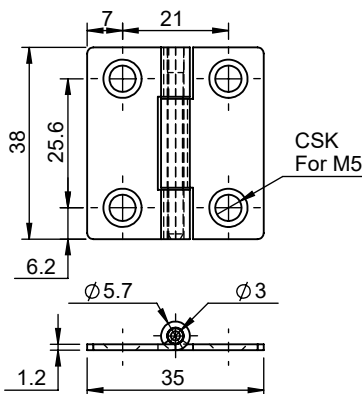
D H I M - 3826 - F

F Finish
Nickel Plating
PC Black Powder Coated

Part Code
DHIM-3826-F
For 'SS-304' : DHIM-3826-SS

Flat Hinge

MS

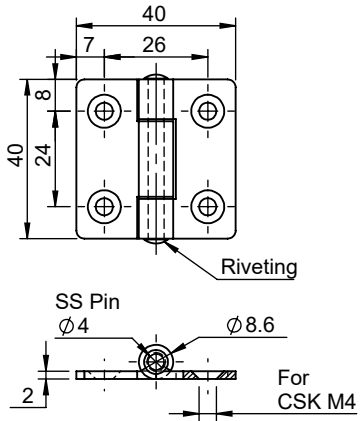


D	H	I	M	-	3835	-	1.2
----------	----------	----------	----------	----------	-------------	----------	------------

Part Code
DHIM-3835-1.2
Finish : Blue Zinc Plating.
For 'SS-304' : DHIM-3835-1.2-SS Finish : Electro Polishing

Flat Hinge

MS



D	H	I	M	-	40	-	BZ
----------	----------	----------	----------	----------	-----------	----------	-----------

Part Code
DHIM-40-BZ
Finish : Blue Zinc Plating.

VI



I



II



III



IV



V



VI



VII



VIII



IX



X



XI



XII



XIII



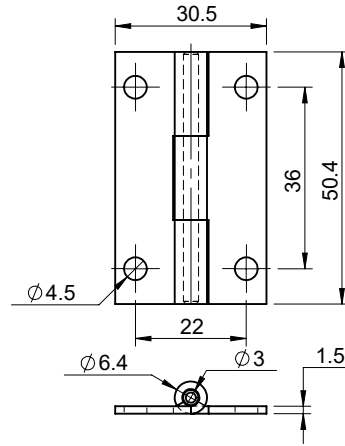
XIV



HINGES

Flat Hinge

MS

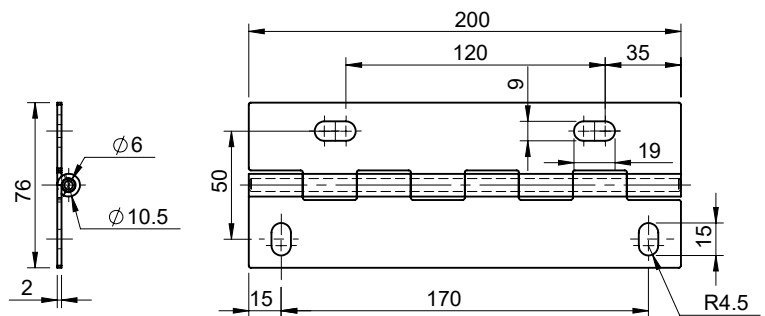


D H I M - 5030

Part Code
DHIM-5030
Finish : Blue Zinc Plating.

Flat Hinge

MS

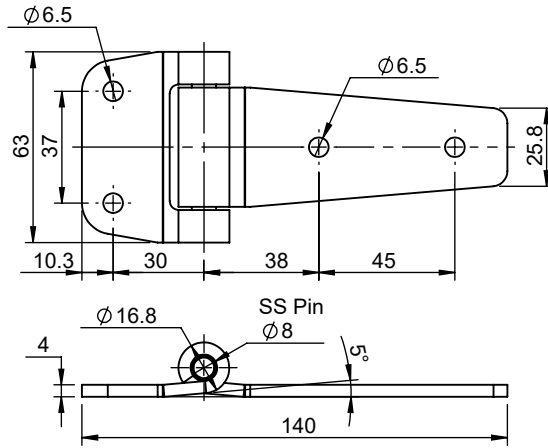


D H I M - 20076

Part Code
DHIM-20076
Finish : Blue Zinc Plating.

Flat Hinge

MS

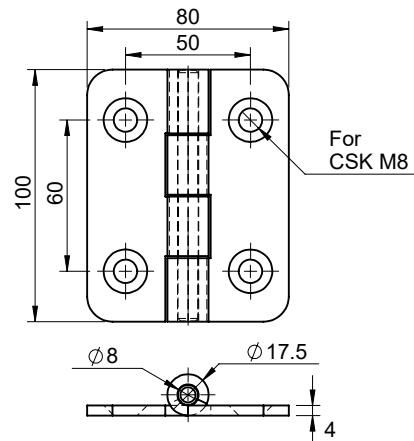


D H I M - 63140 - PC

Part Code
DHIM-63140-PC
Finish : Black Powder Coated.

Flat Hinge

MS



D H I M - 10080 - F

- F** Finish
- PC** Black Powder Coated
 - STPC** Silver Powder Coated
 - CH** Chrome Plated
 - BZ** Blue Zinc Plated

Part Code
DHIM-10080-PC
Finish : Black Powder Coated.
For 'SS-304' : DHIM-10080-SS

VI



I



II



III



IV



V



VI



VII



VIII



IX



X



XI



XII



XIII



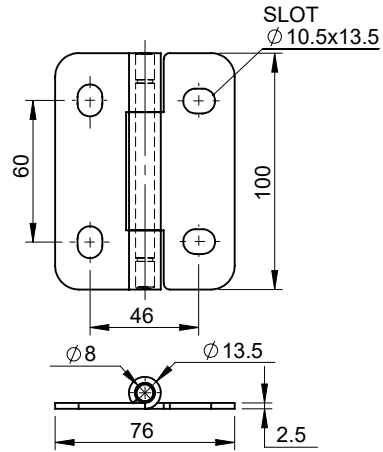
XIV



HINGES

Flat Hinge

MS



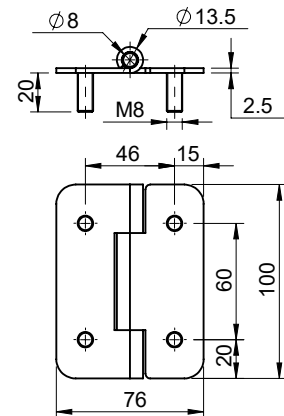
D H I M - 10076 - F

F Finish
PC Black Powder Coated
STPC Silver Powder Coated

Part Code
DHIM-10076-PC
Finish : Black Powder Coated.
For 'SS-304' : DHIM-10076-SS

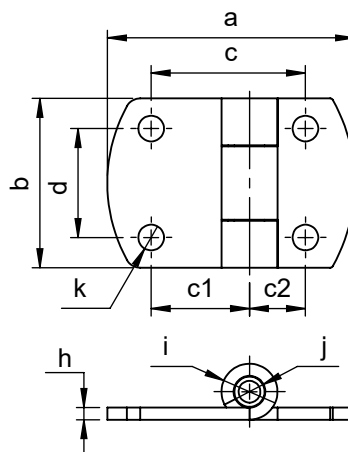
Flat Hinge

MS



D H I M - 10076 - SW8 - PC

Part Code
DHIM-10076-SW8-PC
Finish : Black Powder Coated.

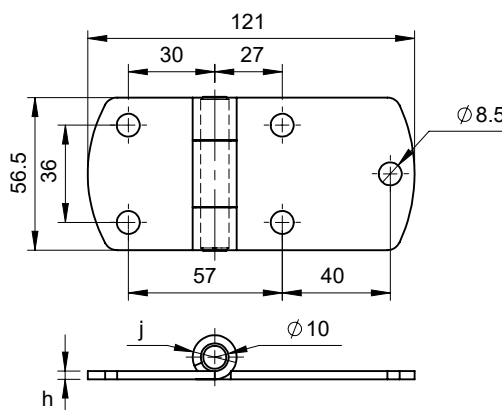


D H I M - A - F

F Finish
CH Chrome Plated
STPC Silver Powder Coated

A	a	b	c	c1	c2	d	h	i	j	k	LC (kg)	
5136	82.5	56	51	32.5	18.5	36	4	Ø18.5	Ø10	Ø8.5	Ax : 208	Ra : 103
5136-SS							3	Ø16.5			Ax : 218	Ra : 110
6536	96		64	32	32		4	Ø18.5			Ax : 077	Ra : 057
6536-SS							3	Ø16.5			Ax : 202	Ra : 098
7036-SS	68	36	18	18						Ax : 148	Ra : 094	

Finish : Electro Polishing For SS-304.



D H I M - A - F

F Finish
CH Chrome Plated
PC Black Powder Coated

A	h	j
10036	4	Ø18.5
10036-SS	3	Ø16.5

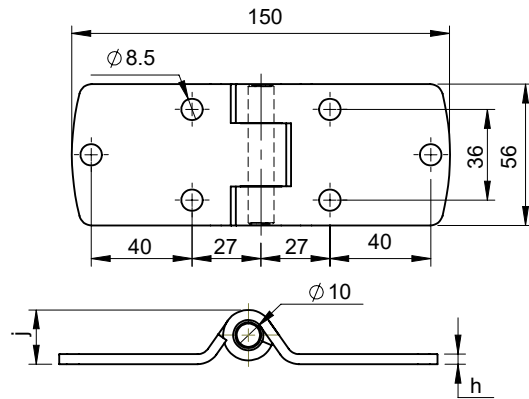
Finish : Electro Polishing For SS-304.

- VI
- I
- II
- III
- IV
- V
- VI
- VII
- VIII
- IX
- X
- XI
- XII
- XIII
- XIV

HINGES

Flat Hinge

MS, SS-304



D H I M - A - F

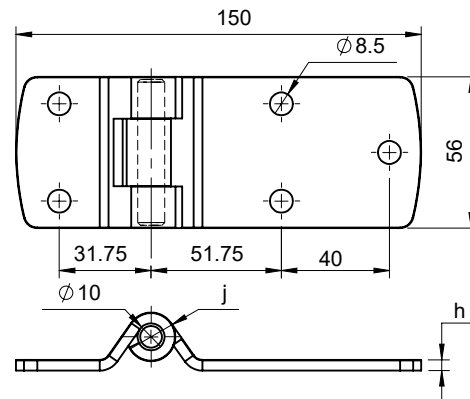
F Finish
CH Chrome Plated
PC Black Powder Coated

A	h	j	LC (kg)	
7575	4	Ø21.5	Ax : 056	Ra : 051
7575-SS	3	Ø21.5	Ax : 112	Ra : 107

Finish : Electro Polishing For SS-304.

Flat Hinge

MS, SS-304



D H I M - A - F

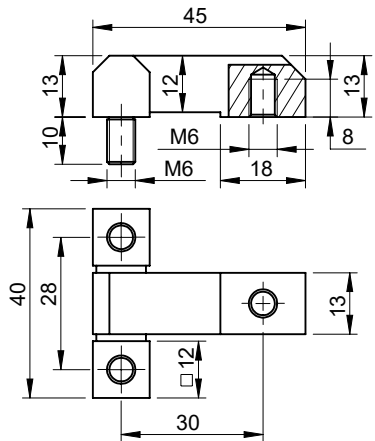
F Finish
CH Chrome Plated
PC Black Powder Coated

A	h	j	LC (kg)	
10550	4	Ø21.5	Ax : 36	Ra : 58
10550-SS	3	Ø21.5	Ax : 85	Ra : 93

Finish : Electro Polishing For SS-304.

Flat Hinge

MS

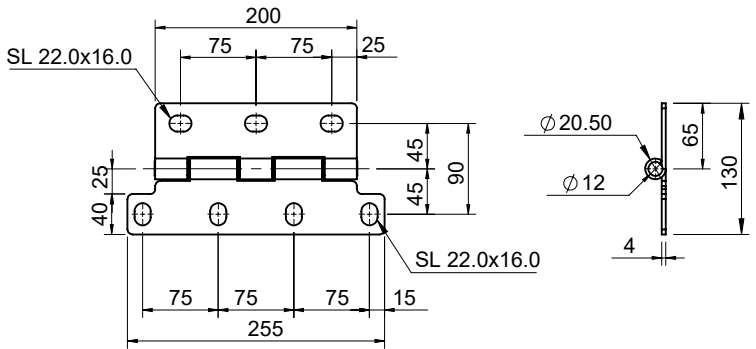


D	H	I	M	-	3440
----------	----------	----------	----------	----------	-------------

Part Code
DHIM-3440
Finish : Blue Zinc Plated

Flat Heavy Duty Hinge

MS



D	H	I	M	-	255130
----------	----------	----------	----------	----------	---------------

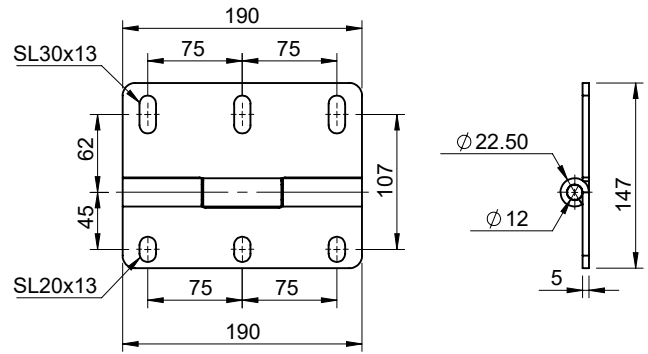
Part Code
DHIM-255130
Finish : Blue Zinc Plated

- VI**
- I**
- II**
- III**
- IV**
- V**
- VI**
- VII**
- VIII**
- IX**
- X**
- XI**
- XII**
- XIII**
- XIV**

HINGES

Flat Heavy Duty Hinge

MS



D H I M - 147190

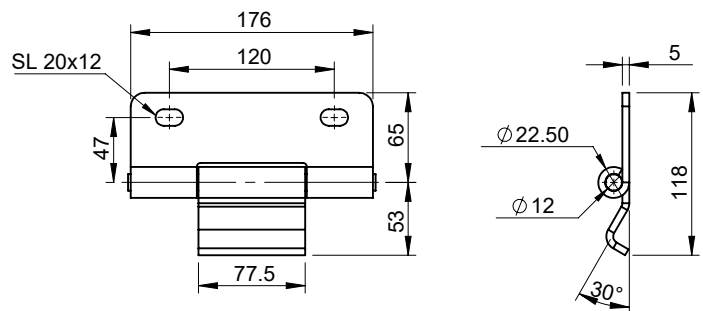
Part Code

DHIM-147190

Finish : Yellow Powder Coated

Flat Heavy Duty Hinge

MS



D H I M - 120176

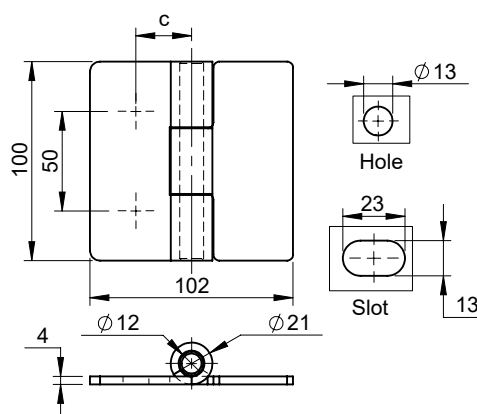
Part Code

DHIM-120176

Finish : Yellow Powder Coated

Flat Heavy Duty Hinge

MS



D H I M - 100102 - X

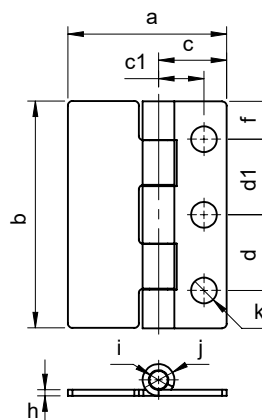
X Mounting Hole
SL Slot

X	LC (kg)	
100102	Ax : 107	Ra : 55
100102-SL	Ax : 102	Ra : 51

Finish : Blue Zinc Plated.

Flat Heavy Duty Hinge

MS



D H I M - A

A	a	b	c	c1	d	d1	f	h	i	j
150120	120	150	60	30	50	50	25	4	Ø12	Ø21
150105	105	150	45	30	50	50	25	4		

Finish : Blue Zinc Plated.

VI



I



II



III



IV



V



VI



VII



VIII



IX



X



XI



XII



XIII



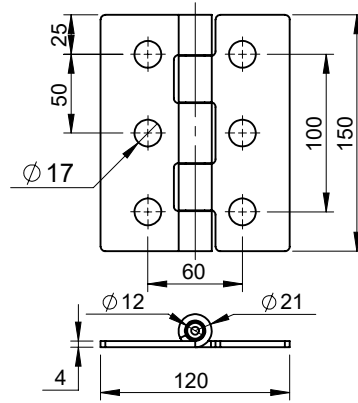
XIV



HINGES

Flat Heavy Duty Hinge

MS

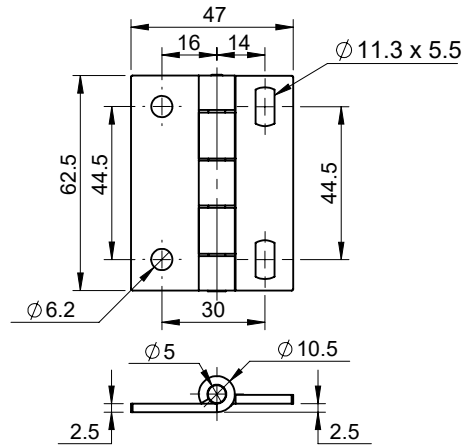


D H I M - 150120 - 6H

Part Code
DHIM-150120-6H
Finish : Blue Zinc Plated.

Flat Heavy Duty Hinge

MS

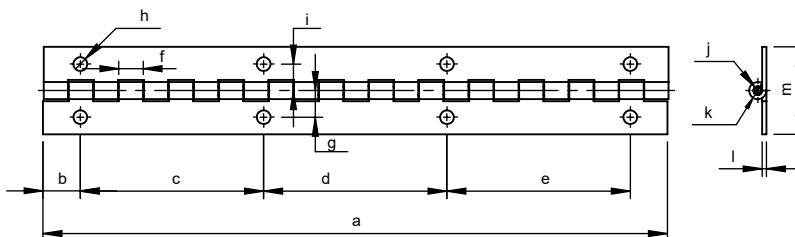


D H I M - 6348

Part Code	LC (kg)	
DHIM-6348	Ax : 58	Ra : 30
Finish : Blue Zinc Plated.		
For 'SS-304' : DHIM-6348-SS Finish : Electro Polishing		

Flat Hinge

MS

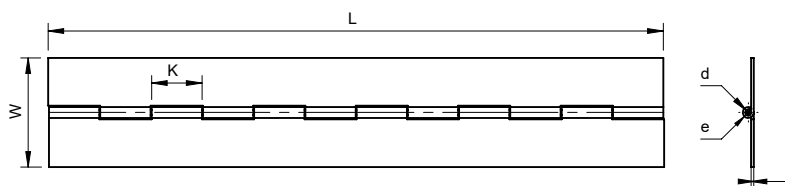


D	M	C	H	-	229	-	27	-	17	-	1	-	H
---	---	---	---	---	-----	---	----	---	----	---	---	---	---

Part Code
DMCH-229-27-17-1-H
Finish : Blue Zinc Plated.

Flat Hinge

MS



D	M	C	H	-	K	-	L	-	W	-	T
---	---	---	---	---	---	---	---	---	---	---	---

Knuckle(K)	Length (L)	Width (W)	Thk. (T)	Pin Ø (e)	d		
12.7	Max.1000 mm	26 to 50	1	Ø2.5	Ø5		
12			16.5	30.5	1.5	Ø3	Ø7
25			17.7	50 to 100	2	Ø6	Ø11
17.7				45 to 75	3	Ø6	Ø12.5

Add 'H' at the end for Hole Version

Finish : Blue Zinc Plated.

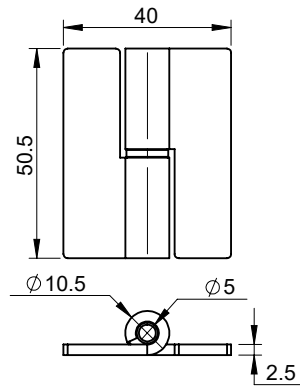
VI



HINGES

Exposed Hinge

MS, SS-304



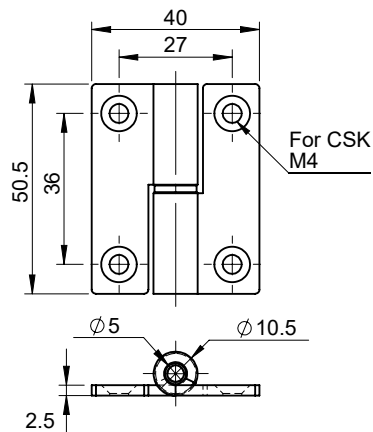
D H L O M - 5040 - X

X Orientation
L Left
R Right

Part Code
DHLOM-5040-L
Finish : Blue Zinc Plated.
For 'SS-304' : DHLOM-5040-L/R-SS Finish : Electro Polishing

Lift off Hinge

MS, SS-304



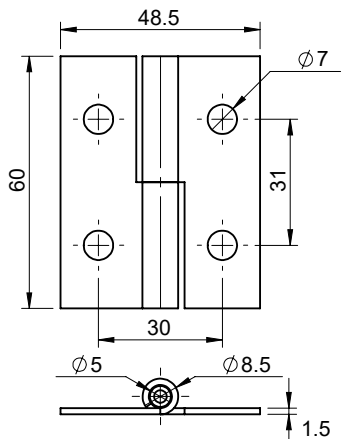
D H L O M - 5040 - H - X

X Orientation
L Left
R Right

Part Code
DHLOM-5040-H-L
Finish : Blue Zinc Plated.
For 'SS-304' : DHLOM-5040-H-L/R-SS Finish : Electro Polishing

Lift off Hinge

MS, SS-304



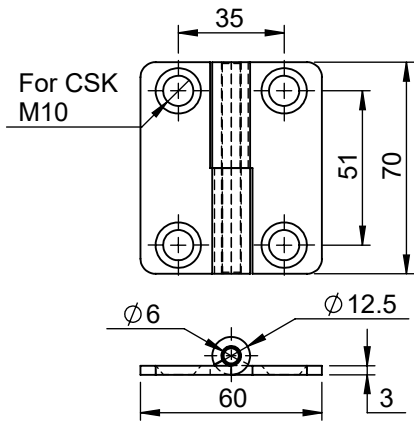
D H L O M - 6048 - X

X Orientation
L Left
R Right

Part Code
DHLOM-6048-L
Finish : Blue Zinc Plated.
For 'SS-304' : DHLOM-6048-L/R-SS Finish : Electro Polishing

Lift off Hinge

MS, SS-304



D H L O M - 7060 - X

X Orientation
L Left
R Right

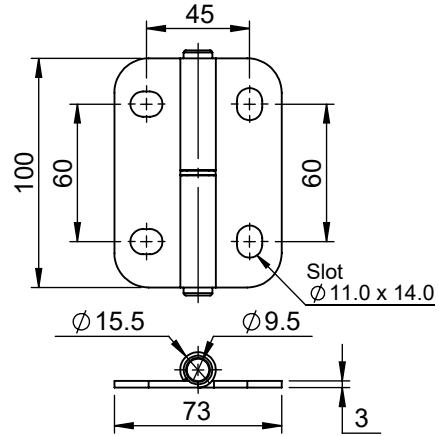
Part Code
DHLOM-7060-L
Finish : Blue Zinc Plated.
For 'SS-304' : DHLOM-7060-L/R-SS Finish : Electro Polishing

- VI
- I
- II
- III
- IV
- V
- VII
- VIII
- IX
- X
- XI
- XII
- XIII
- XIV

HINGES

Lift off Hinge

MS, SS-304



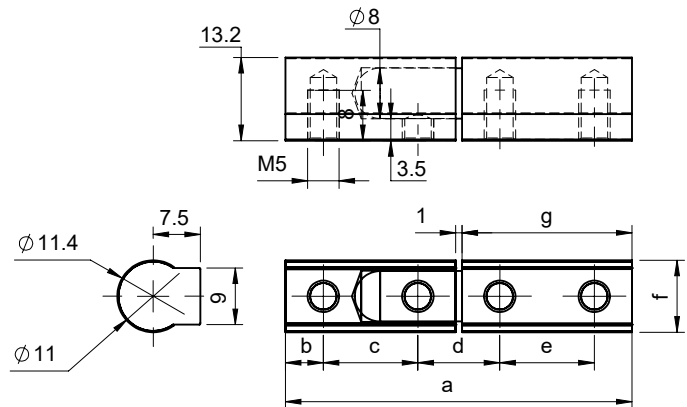
D H L O M - 10073 - X - PC

X Orientation
L Left
R Right

Part Code
DHLOM-10073-L-PC
Finish : Black Powder Coated
For 'SS-304' : DHLOM-10073-L/R-SS Finish : Electro Polishing

Lift off Hinge

MS



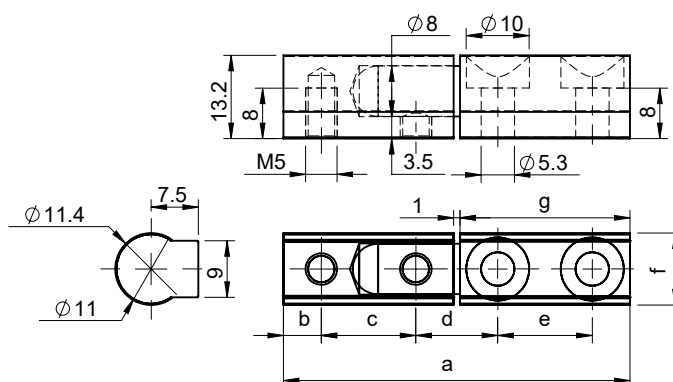
D M L O H - A - BZ

A	a	b	c	d	e	f	g
1155	55	6	15	13	15	Ø11.4	27
1175	75	7.5	30	16.5	15		47
1195	95	7.5	30	20	30		

Finish : Blue Zinc Plated.

Lift off Hinge

MS



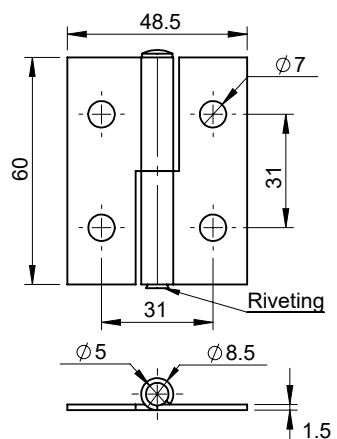
D M L O H - A - H - BZ

A	a	b	c	d	e	f	g
1155	55	6	15	13	15	$\phi 11.4$	27
1175	75	7.5	30	16.5	15		47
1195	95	7.5	30	20	30		

Finish : Blue Zinc Plated.

Fixed Hinge

MS, SS-304



D H I M F - 6048

Part Code
DHIMF-6048
Finish : Blue Zinc Plated.
For 'SS-304' : DHIMF-6048-SS Finish : Electro Polishing

VI



I



II



III



IV



V



VI



VII



VIII



IX



X



XI



XII



XIII

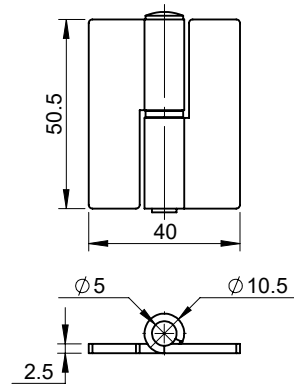


XIV

HINGES

Fixed Hinge

MS, SS-304

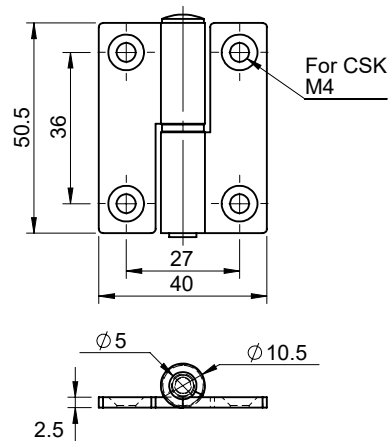


D H I M F - 5040

Part Code
DHIMF-5040
Finish : Blue Zinc Plated.
For 'SS-304' : DHIMF-5040-SS Finish : Electro Polishing.

Fixed Hinge

MS, SS-304

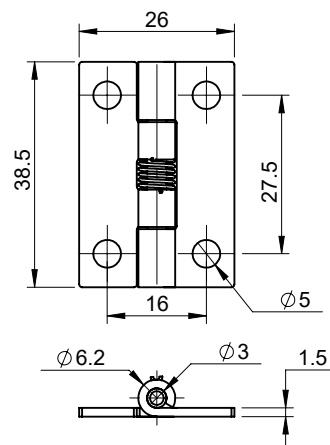
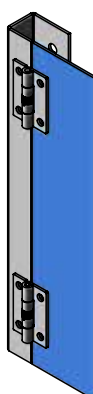


D H I M F - 5040 - H - CH

Part Code
DHIMF-5040-H-CH
Finish : Chrome Plated.
For 'SS-304' : DHIMF-5040-H-SS Finish : Electro Polishing.

Fixed Hinge

MS, SS-304

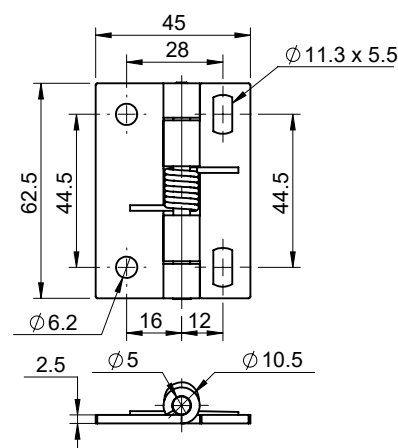
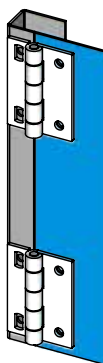


D H S M - 3826

Part Code
DHSM-3826
Finish : Nickel Plated.
For 'SS-304' : DHSM-3826-SS Finish : Electro Polishing.

Flat Hinge

MS, SS-304



D H S M - 6346

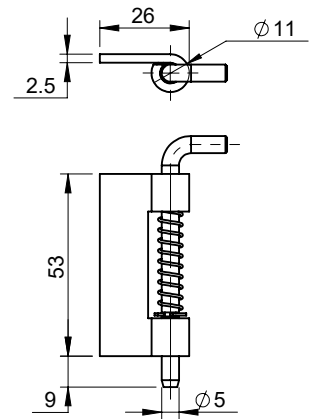
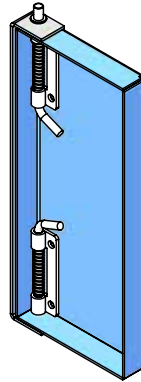
Part Code
DHSM-6346
Finish : Blue Zinc Plated.
For 'SS-304' : DHSM-6346-SS Finish : Electro Polishing.

- VI
- I
- II
- III
- IV
- V
- VI
- VII
- VIII
- IX
- X
- XI
- XII
- XIII
- XIV

HINGES

Spring Return Hinge

MS, SS-304



Cut Out
Drill Hole Ø6.6

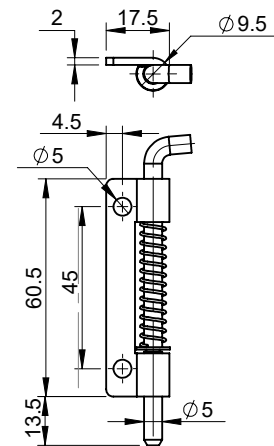
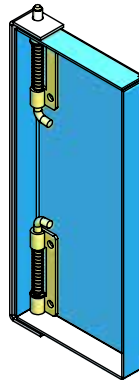
D S H I - X

X Orientation
L Left
R Right

Part Code
DSHI-L
Finish : Blue Zinc Plated.
For 'SS-304' : DSHI-L/R-SS Finish : Electro Polishing.

Spring Hinge

MS, SS-304



Cut Out
Drill Hole Ø6.6

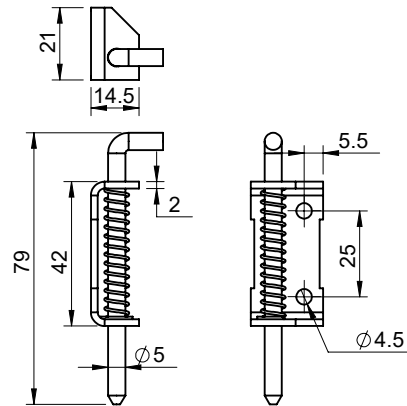
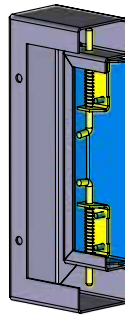
D S H I - 2 - X

X Orientation
L Left
R Right

Part Code
DSHI-2-L
Finish : Blue Zinc Plated.
For 'SS-304' : DSHI-2-L/R-SS Finish : Electro Polishing.

Spring Hinge

MS, SS-304



Cut Out
Drill Hole Ø6.6

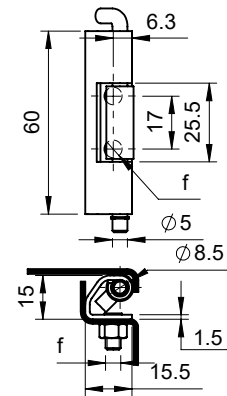
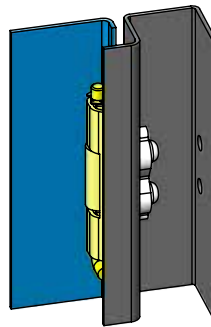
D **S** **H** **I** - **3** - **X**

X Orientation
L Left
R Right

Part Code
DSHI-3-L
Finish : Blue Zinc Plated.
For 'SS-304' : DSHI-3-L/R-SS Finish : Electro Polishing.

Spring Hinge

MS, SS-304



D **H** **I** **M** - **6015** - **AR** - **X**

X Mounting
Hole
M4 Stud
M6

Part Code
DHIM-6015-AR
Finish : Blue Zinc Plated.
For 'SS-304' : DHIM-6015-AR/M4/M6-SS Finish : Electro Polishing.

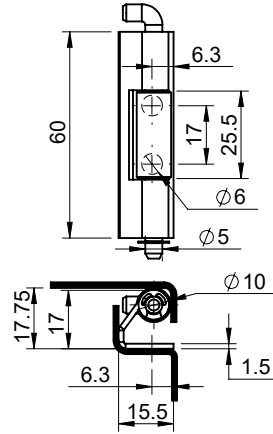
VI



HINGES

Concealed Hinge

MS, SS-304



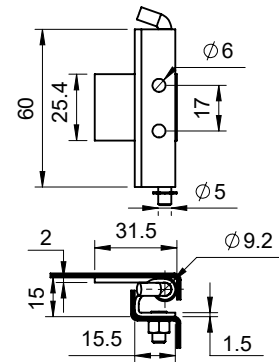
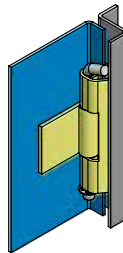
D H I M - 6015 - AR - 10

X Orientation
L Left
R Right

Part Code
DHIM-6015-AR-10
Finish : Blue Zinc Plated.
For 'SS-304' : DHIM-6015-AR-10-SS Finish : Electro Polishing.

Concealed Hinge

MS, SS-304

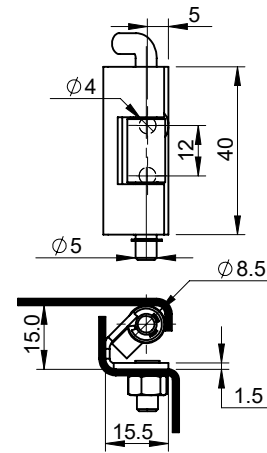
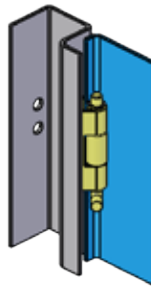


D H I M - 6015 - AW

Part Code
DHIM-6015-AW
Finish : Blue Zinc Plated.
For 'SS-304' : DHIM-6015-AW-SS Finish : Electro Polishing.

Concealed Hinge

MS, SS-304

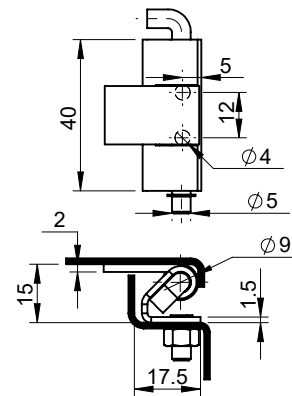
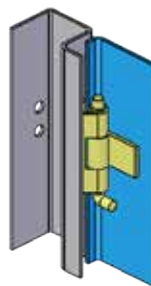


D H I M - 4015 - AR

Part Code
DHIM-4015-AR
Finish : Blue Zinc Plated.
For 'SS-304' : DHIM-4015-AR-SS Finish : Electro Polishing.

Concealed Hinge

MS, SS-304



D H I M - 4015 - AW

Part Code
DHIM-4015-AW
Finish : Blue Zinc Plated.
For 'SS-304' : DHIM-4015-AW-SS Finish : Electro Polishing.

VI



I



II



III



IV



V



VI



VII



VIII



IX



X



XI



XII



XIII



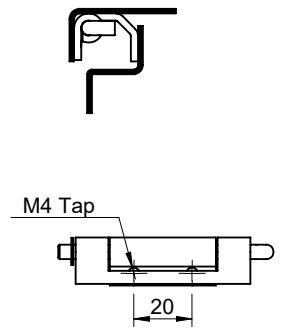
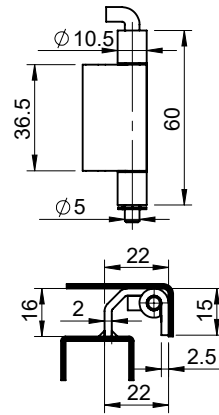
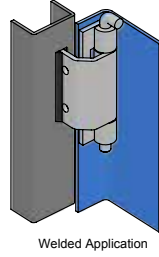
XIV



HINGES

Concealed Hinge

MS, SS-304

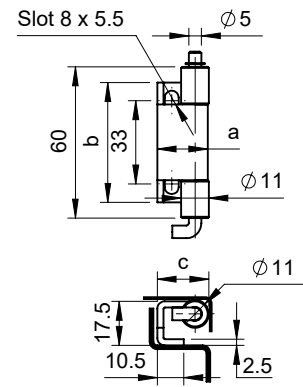
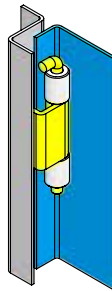


D H I M - 60 - AS

Part Code
DHIM-60-AS
Finish : Blue Zinc Plated.
For 'SS-304' : DHIM-60-AS-SS Finish : Electro Polishing.

Concealed Hinge

MS, SS-304



D H I M - A

A	a	b	c	LC (kg)	
6015	20	47	20.5	Ax : 24	Ra : 09
6020	25	47.5	25.5	Ax : 22	Ra : 11

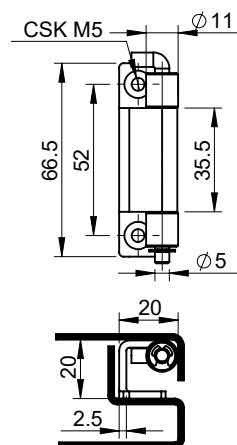
Finish : Blue Zinc Plated.

For 'SS-304' : DHIM-60-AS-SS | Finish : Electro Polishing.

- VI
- I
- II
- III
- IV
- V
- VI
- VII
- VIII
- IX
- X
- XI
- XII
- XIII
- XIV

Concealed Hinge

MS, SS-304

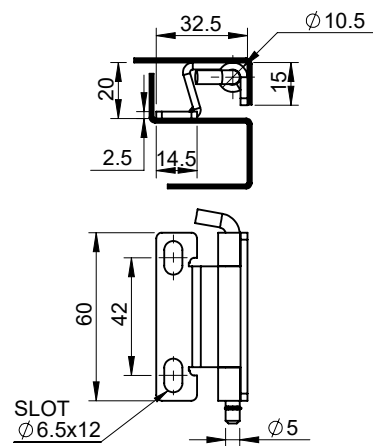
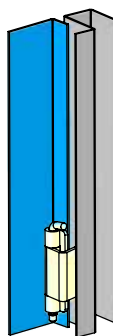


D H I M - 6012

Part Code
DHIM-6012
Finish : Blue Zinc Plated.
For 'SS-304' : DHIM-6012-SS Finish : Electro Polishing.

Concealed Hinge

MS



D H I M - 6026

Part Code
DHIM-6026
Finish : Blue Zinc Plated.
For 'SS-304' : DHIM-6026-SS Finish : Electro Polishing.

VI



I



II



III



IV



V



VI



VII



VIII



IX



X



XI



XII



XIII



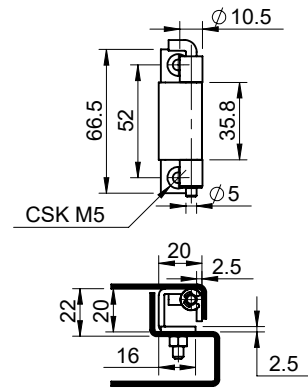
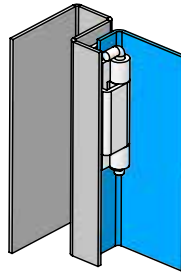
XIV



HINGES

Concealed Hinge

MS, SS-304

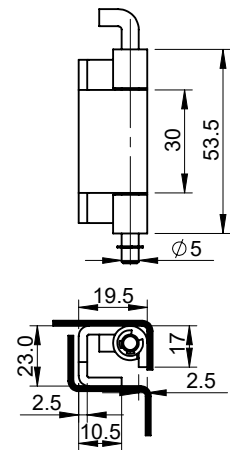
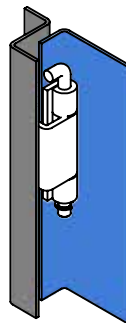


D H I M - 6036

Part Code
DHIM-6036

Concealed Hinge

MS, SS-304

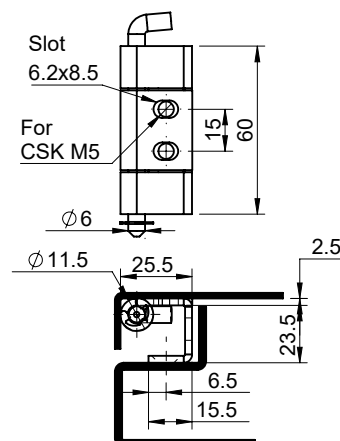
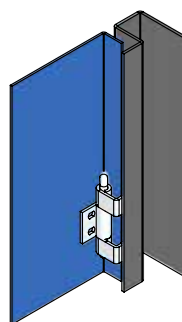


D H I M - 5325

Part Code
DHIM-5325
Finish : Blue Zinc Plated.
For 'SS-304' : DHIM-5325-SS Finish : Electro Polishing.

Concealed Hinge

MS, SS-304

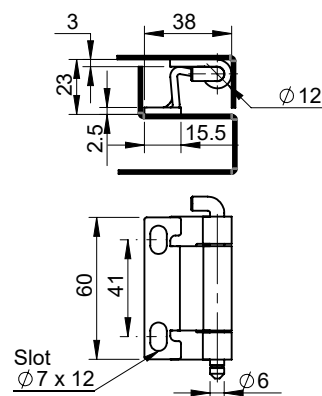
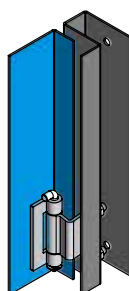


D H I M - 60

Part Code
DHIM-60
Finish : Blue Zinc Plated.
For 'SS-304' : DHIM-60-SS Finish : Electro Polishing.

Concealed Hinge

MS, SS-304



D H I M - 6060

Part Code
DHIM-6060
Finish : Blue Zinc Plated.
For 'SS-304' : DHIM-6060-SS Finish : Electro Polishing.

VI



I



II



III



IV



V



VI



VII



VIII



IX



X



XI



XII



XIII



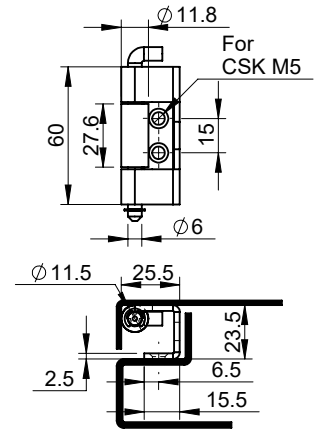
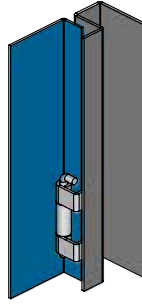
XIV



HINGES

Concealed Hinge

MS, SS-304

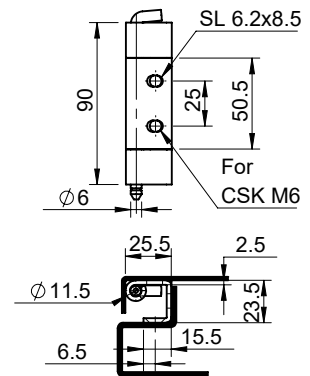


D H I M - 60 - R

Part Code
DHIM-60-R
Finish : Blue Zinc Plated.
For 'SS-304' : DHIM-60-R-SS Finish : Electro Polishing.

Concealed Hinge

MS, SS-304

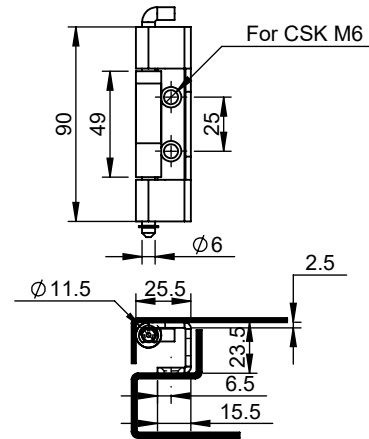
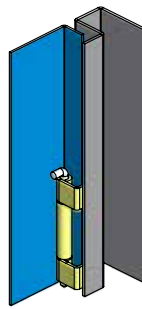


D H I M - 120

Part Code
DHIM-120
Finish : Blue Zinc Plated.
For 'SS-304' : DHIM-120-SS Finish : Electro Polishing.

Concealed Hinge

MS, SS-304

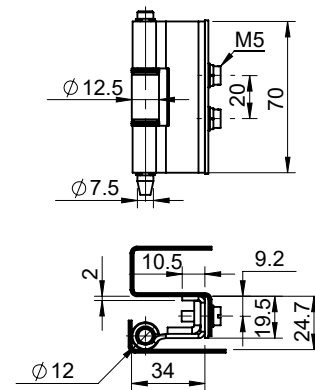
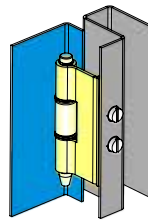


D H I M - 120 - R

Part Code
DHIM-120-R
Finish : Blue Zinc Plated.
For 'SS-304' : DHIM-120-R-SS Finish : Electro Polishing.

Concealed Hinge

MS, SS-304



D H I M - 7020

Part Code
DHIM-7020
Finish : Blue Zinc Plated.
For 'SS-304' : DHIM-7020-SS Finish : Electro Polishing.

VI



I



II



III



IV



V



VI



VII



VIII



IX



X



XI



XII



XIII

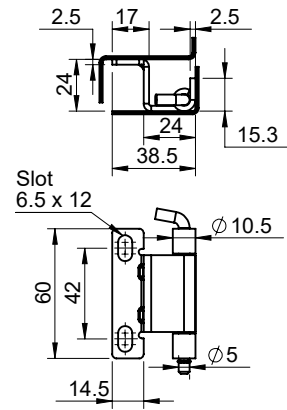
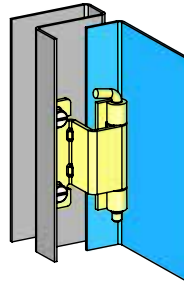


XIV

HINGES

Concealed Hinge

MS, SS-304

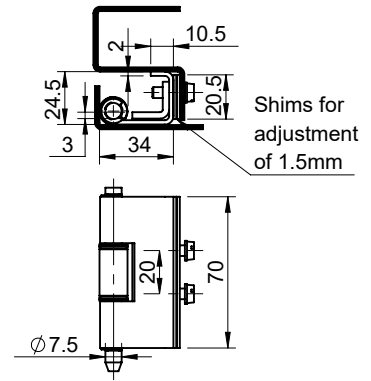
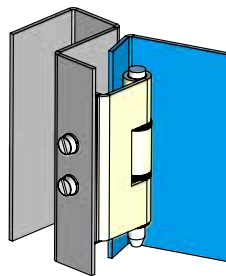


D H I M - 6024

Part Code
DHIM-6024
Finish : Blue Zinc Plated.
For 'SS-304' : DHIM-6024-SS Finish : Electro Polishing.

Concealed Hinge

MS, SS-304



D H I M - 7023

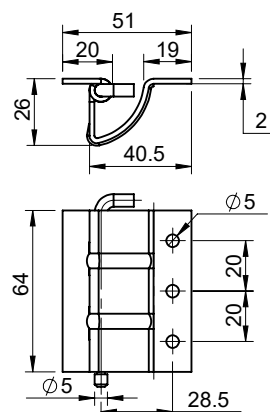
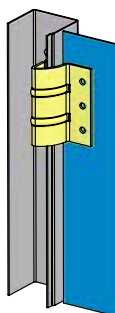
Part Code
DHIM-7023
Finish : Blue Zinc Plated.
For 'SS-304' : DHIM-7023-SS Finish : Electro Polishing.

VI



Concealed Hinge

MS

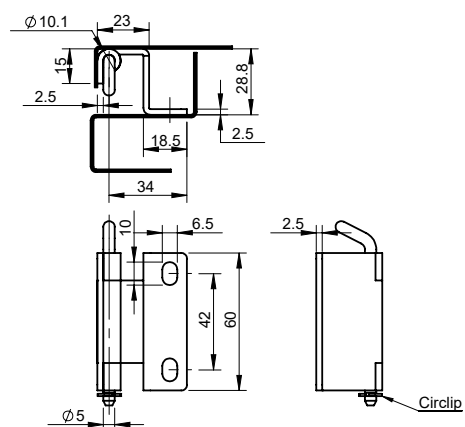
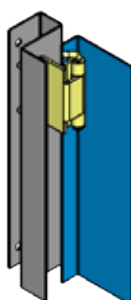


D H I M - 5964 - F

Part Code
DHIM-5964-F
Finish : Blue Zinc Plated.

Concealed Hinge

MS



D H I M - 6034

Part Code
DHIM-6034
Finish : Blue Zinc Plated.

VI



I



II



III



IV



V



VI



VII



VIII



IX



X



XI



XII



XIII



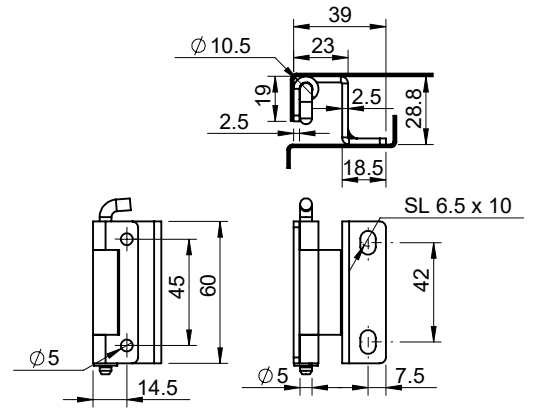
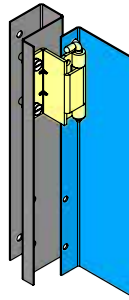
XIV



HINGES

Concealed Hinge

MS

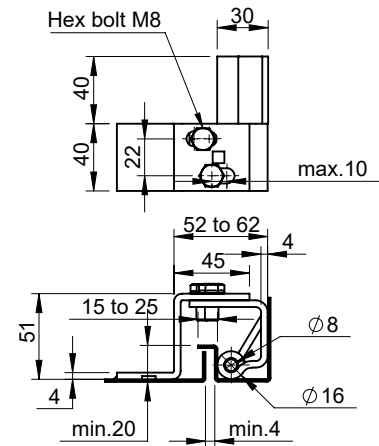
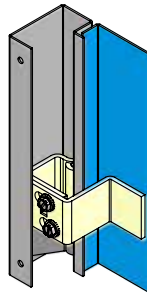


D H I M - 6039

Part Code
DHIM-6039
Finish : Blue Zinc Plated.

Concealed Hinge

MS, SS-304

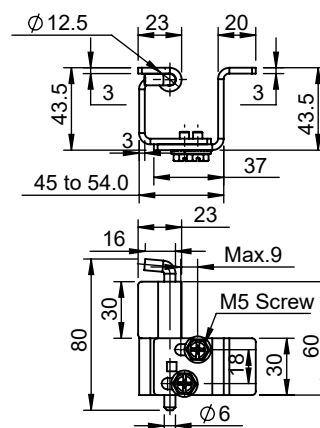


D H I M - 4040 F

Part Code
DHIM-4040F
Finish : Blue Zinc Plated.

Concealed Hinge

MS

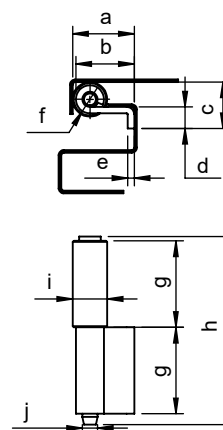
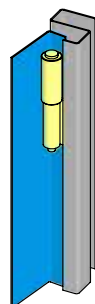


D H I M - 3030 F - 3

Part Code
DHIM-3030F-3
Finish : Blue Zinc Plated.

Concealed Hinge

MS



D H I W - 8040 - A

A	a	b	c	d	e	f	g	h	i	j
	30.5	29	21.5	10	3	Ø13	40	87	Ø16	Ø7
A	19	17.5								
C	29	27.5	29	17.5						

Finish : Blue Zinc Plated.

VI



I



II



III



IV



V



VI



VII



VIII



IX



X



XI



XII



XIII



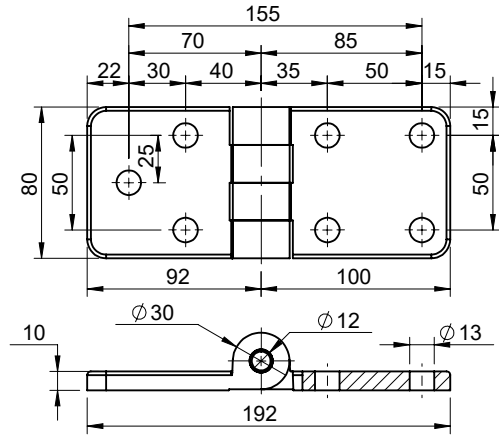
XIV



HINGES

Flat Hinge

Casting MS, Casting SS-304

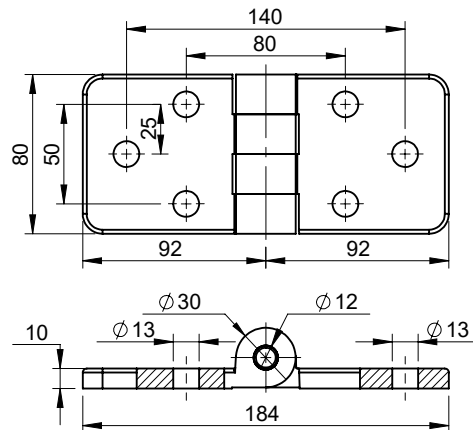


D H I M C - 80192

Part Code	LC (kg)	
DHIMC-80192	Ax : 450	Ra : 475
Finish : Black Powder Coating.		
For 'SS-304' : DHIS-80192-SS Finish : Electro Polishing.		

Flat Hinge

Casting MS, Casting SS-304

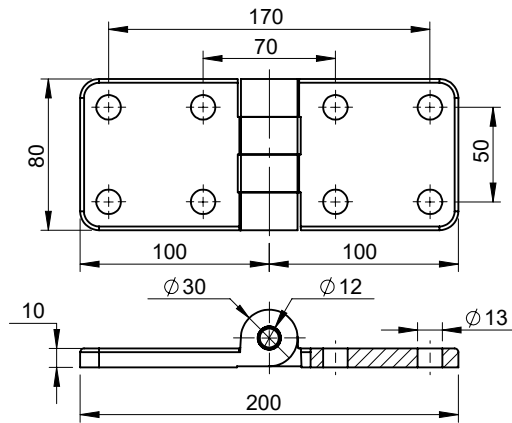


D H I M C - 80184

Part Code	LC (kg)	
DHIMC-80184	Ax : 450	Ra : 475
Finish : Black Powder Coating.		
For 'SS-304' : DHIS-80184-SS Finish : Electro Polishing.		

Flat Hinge

Casting MS, Casting SS-304

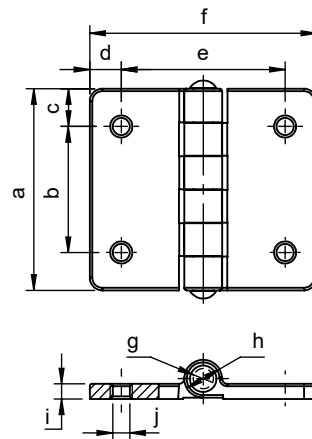


D H I M C - 80200

Part Code	LC (kg)	
DHIMC-80200	Ax : 450	Ra : 475
Finish : Black Powder Coating.		
For 'SS-304' : DHIS-80200-SS Finish : Electro Polishing.		

Flat Hinge

Casting MS



D H I M C - A

A	a	b	c	d	e	f	g	h	i	j
8090	90	80	65	50	12.5	15	M8	6	Ø8	Ø15
80130	130		100		15					

Finish : Black Powder Coating.

VI



I



II



III



IV



V



VI



VII



VIII



IX



X



XI



XII



XIII



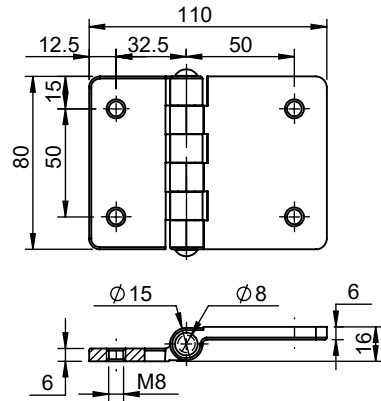
XIV



HINGES

Flat Hinge

Casting MS

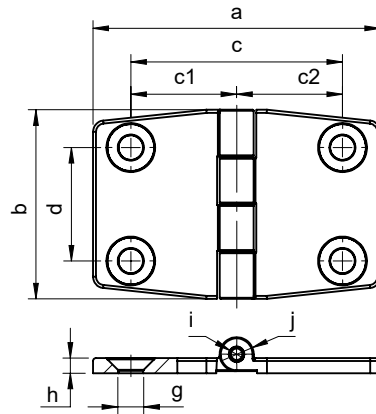


D H I M C O - 80110

Part Code	LC (kg)	
DHIMCO-80110	Ax : 450	Ra : 475
Finish : Black Powder Coating.		

Flat Hinge

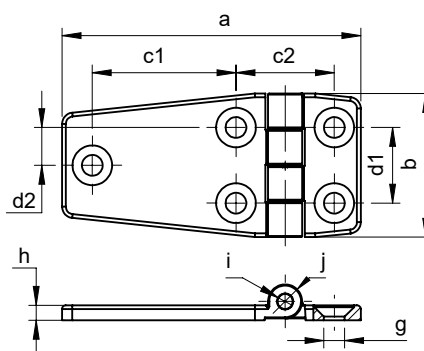
Casting SS-304



D H I S - A

A	a	b	c1	c2	d1	d2	h	i	j	g	LC (kg)	
50	50	50	30	15	15	30	4	Ø4	Ø9	CSK M6	Ax : 122	Ra : 200
5076	76		56	28	28						Ax : 148	Ra : 221
5063	63		43	15	28						Ax : 139	Ra : 223

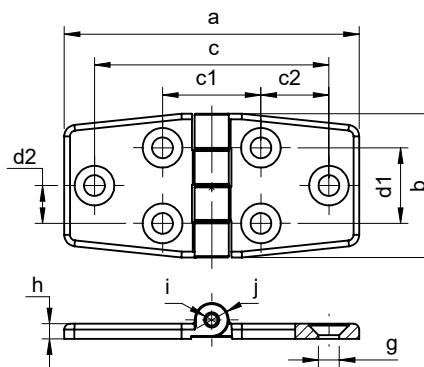
Finish : Electro Polishing.



D H I S - A

A	a	b	c1	c2	d1	d2	h	i	j	g	LC (kg)	
3879	79	38	38	26	20	10	4	Ø4	Ø9	CSK M5	Ax : 120	Ra : 140
3859	59	38	18	26	20	10	4	Ø4	Ø9	CSK M5	Ax : 101	Ra : 176

Finish : Electro Polishing.



D H I S - A

A	a	b	c	c1	c2	d1	d2	h	i	j	g	LC (kg)	
3878	78	38	62	26	18	20	10	4	Ø4	Ø9	CSK M5	Ax : 118	Ra : 184
3898	98	36	82									Ax : 114	Ra : 218
38118	118	38	102									Ax : 134	Ra : 167

Finish : Electro Polishing.

VI



I



II



III



IV



V



VI



VII



VIII



IX



X



XI



XII



XIII



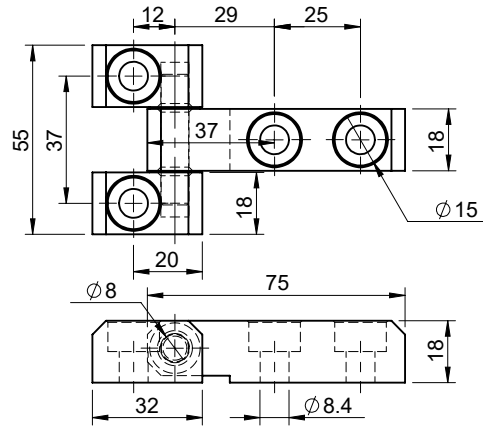
XIV



HINGES

Flat Hinge

MS

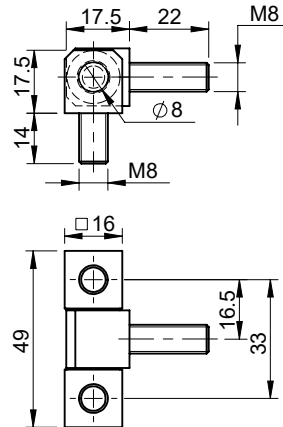


D H I M - 9155

Part Code	LC (kg)	
DHIM-9155	Ax : 140	Ra : 200
Finish : Blue Zinc Plated.		

Flat Hinge

MS

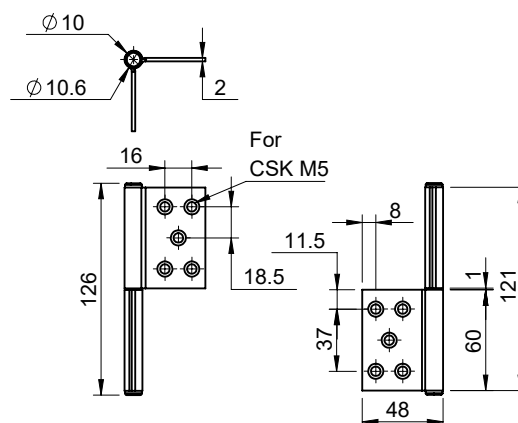


D H I M - 16 - 8 - 3

Part Code
DHIM-16-8-3
Finish : Blue Zinc Plated.

Lift off Hinge

SS-304



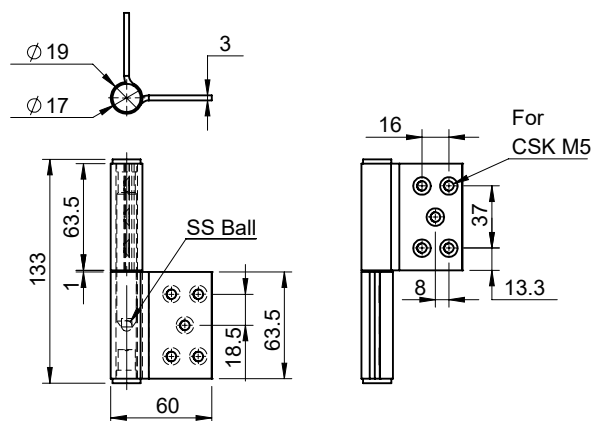
D H L O M - 120 - SS - X

X Orientation
L Left
R Right

Part Code
DHLOM-120-SS-L/R
Finish : Electro Polishing.

Lift off Hinge

SS-304



D H L O M - 130 - SS - X

X Orientation
L Left
R Right

Part Code
DHLOM-130-SS-L/R
Finish : Electro Polishing.

VI

I

II

III

IV

V

VI

VII

VIII

IX

X

XI

XII

XIII

XIV

Ideas



Darshana Industries Pvt. Ltd.

📍 Head Office & Factory:
Sub Plot No. 32, Final Plot No. 6,
Ramtekdi Industrial Estate, Hadapsar,
Pune-411 028. Maharashtra, INDIA.

☎ Tel: +91 20 2951 1572

🌐 darshanaindustries.com

Head of Sales & Exports

👤 **Sanket Sutrave**
✉ ssutrave@darshanaindustries.com

Head of Business Development

👤 **Jethan Reddy**
✉ jmadhireddy@darshanaindustries.com

