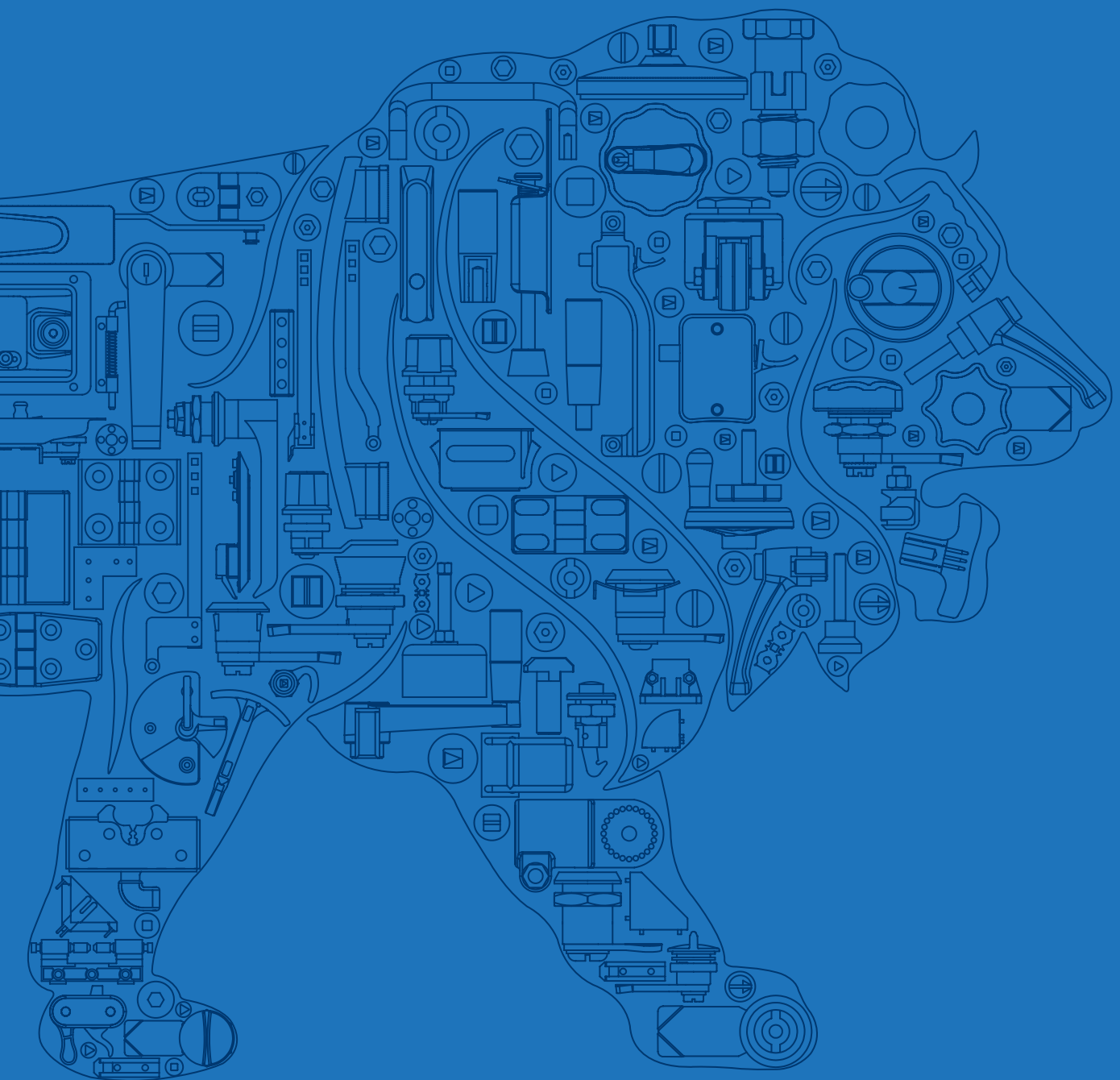


D darshana[®]



Made in India  Made for You

WHO WE ARE

India's Largest and Most Trusted Manufacturer of
Access Hardware and Machine Components

Founded in
1982

Highly focused on
INDIA'S
Strong Machine
Building Industry

Engineering

Tooling

Manufacturing

Sales

Two Locations in
PUNE

120,000 sq. ft.
(11,000 sq. m.)
AREA

OVER 350

People Committed to Customer Satisfaction

OVER 20 DEALERS

in India and reliable partners overseas to provide end to end
integration of parts in customer's designs

OVER 90%

of components used are

MADE-IN-HOUSE

Ensures control of quality and delivery

OUR PRESENCE IN VARIOUS SECTORS



Agriculture



Airline Industry



Automation



Automobile



Dairy



Defence



Earthmoving



Electric Panels



Food



Generator



Hospital Essentials



HVAC



Interior



Kitchen Equipment



Machine Building



Marine



Medical



Office Furniture



Pharma



Printing & Packing



Railways



Renewable Energy



Telecom



Waste Management

OUR GLOBAL PRESENCE

India

- Ahmedabad
- Aurangabad
- Bengaluru
- Chennai
- Coimbatore
- Delhi
- Goa
- Hyderabad
- Indore
- Kolhapur
- Mumbai
- Nagpur
- Nashik
- Noida
- Pune
- Punjab
- Rajkot
- Surat
- Vadodara

International

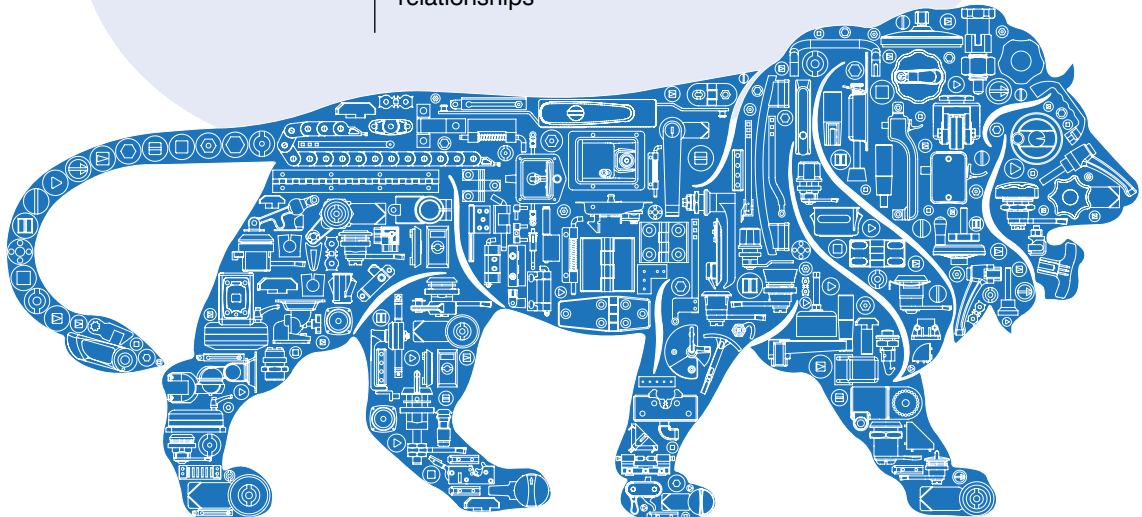
- Australia
- Canada
- Egypt
- France
- Iceland
- Ireland
- Israel
- Italy
- Kenya
- Kuwait
- Lebanon
- Malaysia
- Netherlands
- New Zealand
- Nigeria
- Oman
- Philippines
- Poland
- Saudi Arabia
- South Africa
- Spain
- Sri Lanka
- Thailand
- UAE
- United Kingdom
- Yemen
- Zambia
- USA

Vision

To be the leading trusted source of engineered machine components.

Mission

To create continuous growth opportunities through value driven product designs and operations.
We will achieve this growth through well engineered designs that ensure product reliability and efficient manufacturing operations that are committed to quality, consistency, and cost management
Customer connectivity that creates long-term relationships



Made in India  Made for You



Primary Processes in Facility 1

- Zinc Die Casting
- Injection Molding
- Powder Coating
- Laser Cutting
- CNC Machining
- Gasketing
- Key Making
- Robotic Welding
- Robotic Buffing
- Automated Assembly Lines

ISO CERTIFIED


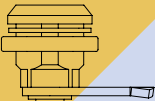
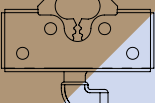
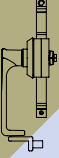
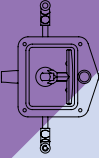
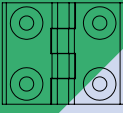
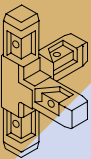
9001 : 15 | 14001 : 15 | 45001 : 15

Primary Processes in Facility 2

- Stamping Unit
- Riveting Line
- Secondary Finishing Lines
- Assembly (Sheet Metal Components)
- Space for expansion



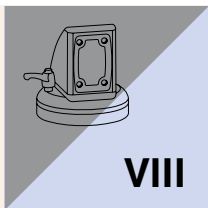
Product Categories

Colour coding for Category identification	Product Category	Category Sub Colour Shade	Page No.
 Category Number I	HANDLES		008 to 083
 Category Number II	LOCKS		084 to 119
 Category Number III	LATCHES		120 to 145
 Category Number IV	MULTI-POINT LOCKS		146 to 179
 Category Number V	CANOPY LOCKS		180 to 195
 Category Number VI	HINGES		196 to 267
 Category Number VII	CONVEYOR COMPONENTS		268 to 291

Part Code Configurator

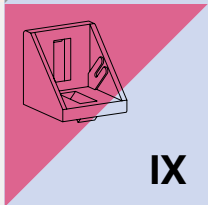


For building the **Part Code** please fill the variables that are outlined values from the table referring the drawings.



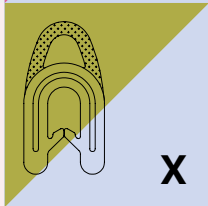
SUPPORT ARM SYSTEM

292 to 323



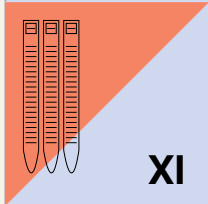
ALUMINIUM SECTIONS & ACCESSORIES

324 to 343



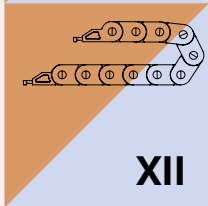
GASKETS

344 to 349



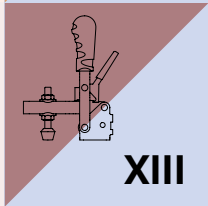
CONDUIT ACCESSORIES & CABLE TIES

350 to 355



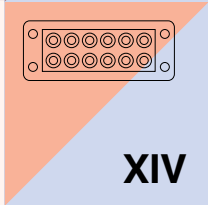
DRAG CHAINS

356 to 361



TOGGLE CLAMPS

362 to 379



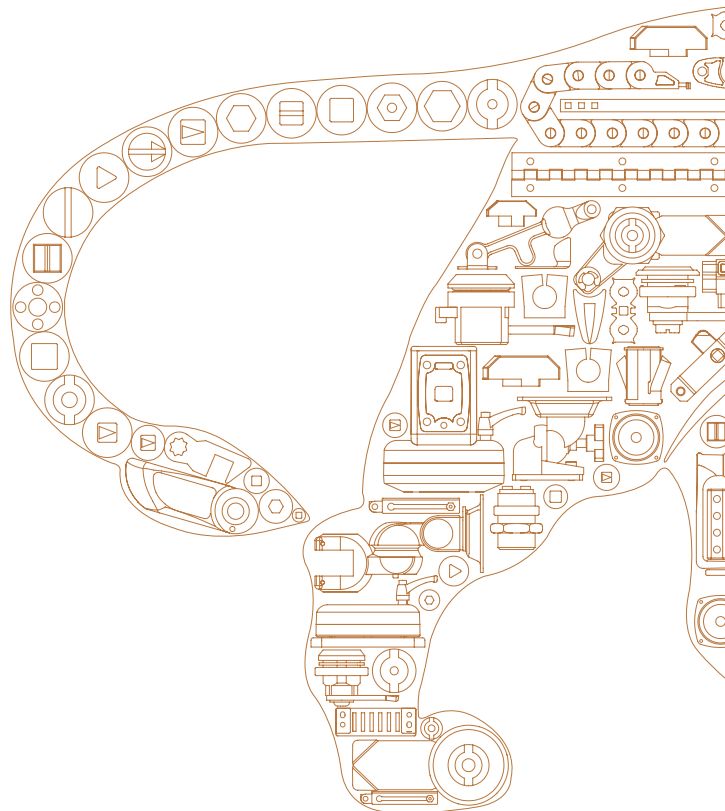
CABLE MANAGEMENT SYSTEM

380 to 385

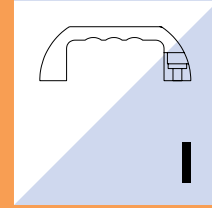
Part Code Index

Product Name	Material	Page
Standard Guideline		10
		11
Adjustable Handle	Zinc, Polyamide	12
		13
Finger Grip	Polyamide	14
Standard Grip		
Round Finger Grip		
Bowline		
Curved		
Slim	Zinc, Polyamide	15
Topside		16
Standard Grip	Zinc	17
Slim	Zinc	18
Hybrid (TPE)	Steel strip over molded with TPE	18
U Handle	MS, SS-304	19
Swing Handle	Zinc	20
	MS	21
Stay Handle	SS-304	22
Extrusion Handle	Aluminium	23
		24
Pipe Handle - Round Straight Pipe (Inline Endcap Bases)	Aluminium, Polyamide	25
Pipe Handle - Round Straight Pipe		26
Pipe Handle - Round Straight Pipe (Inline Endcap Bases)	MS, Polyamide	27
	Aluminium, Polyamide	
Pipe Handle - Round Straight Pipe (Offset Bases)	Aluminium, Zinc	28
Pipe Handle - Round Straight Pipe	Aluminium, Polyamide	29
	Aluminium, SS-304, Zinc	
	Aluminium, Polyamide	30
	Zinc, SS-304	31
Pipe Handle - Capsule Bent Pipe	Aluminium, Polyamide	31
Pocket Handles - Angled	Polyamide	32
Pocket Handles - Curved		
Pocket Handles	SS-304	33
Pocket Handles - Curved	Zinc	
Crate Handle	MS	34
Flush Pull Handle	Polyamide	35
	Zinc, Polyamide	
Slam Handle	Zinc	36
Angular Handle - Offset	Polyamide	37
Press Handle	Zinc	
Squeeze Action Handle	Zinc, SS-304	38
Lever Handle	Zinc	

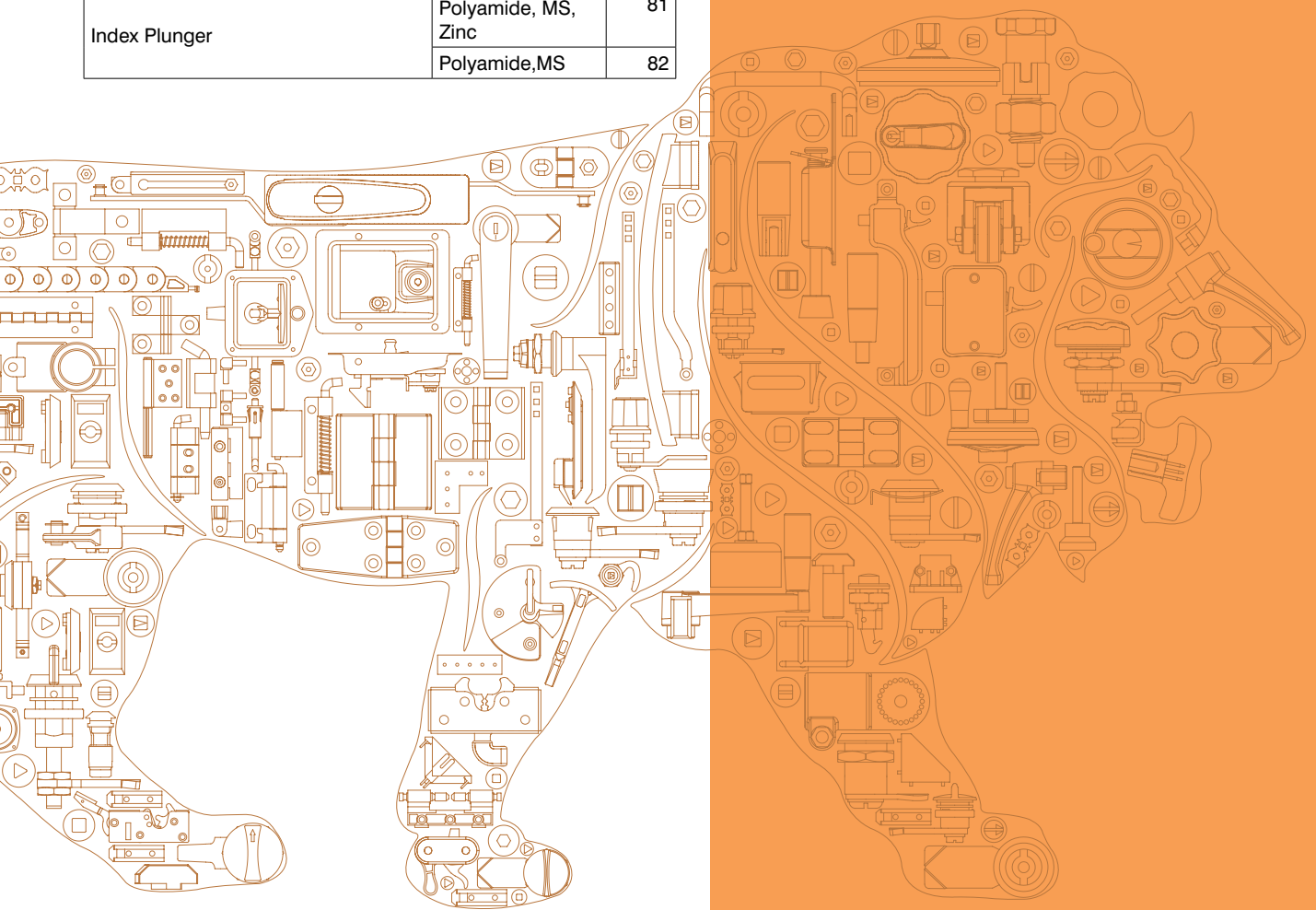
Product Name	Material	Page
Knobs - Shell Knob	Polyamide	39
Knobs - Pull Knob	Polyamide, MS	40
	Polyamide	41
	Polyamide, MS	42
Knobs - Knurled Knob	Polyamide	43
	Polyamide, MS	44
Knobs - Thumb Knob	Polyamide, MS	45
		46
		47
		48
		49
Knobs - Lobed Knob	Polyamide	50
	Polyamide, MS	51
	SS-304	52
		53
Knobs - Winged Knob	Polyamide, MS	54
Folding Revolving Handle	Polyamide, Zinc	55
Fixed Handle	Polyamide, MS	56
Revolving Handle		57
Crank Handle		58
		59
Hand Wheel		60
Hand Wheel (Revolving)	Polyamide, MS	61
Hand Wheel (Revolving and Folding)		
Hand Wheel		
Hand Wheel (Fixed)		
Hand Wheel (Revolving and Folding)		
Hand Wheel (Revolving)	62	
Hand Wheel (Revolving)		63



Product Name	Material	Page
Hand Wheel	Aluminium	64
Hand Wheel (Revolving)		
Hand Wheel (Revolving and Folding)		65
Leveling Base	Polyamide, MS	66
		67
		68
		69
	Polyamide	70
	Polyamide, MS	
	Polyamide, MS, SS-304	
	Polyamide, MS, SS-304	71
	Polyamide, MS, SS-304	
	MS	
		72
	MS, SS-304	73
		74
	MS	75
	Mail Steel	76
MS	77	
Zinc, MS	78	
Anti-Vibration Leveling Base	MS	79
Leveling Foot Castor	Aluminium, MS	80
Door Stopper	Zinc, MS	81
Index Plunger	Polyamide, MS, Zinc	
	Polyamide,MS	
		82

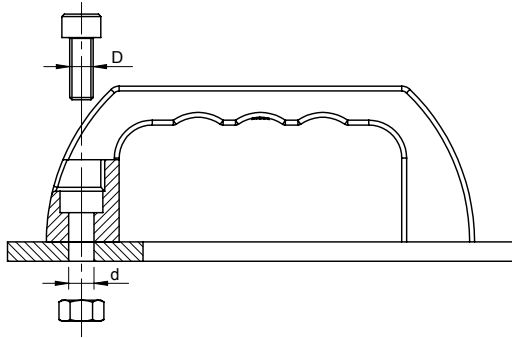


HANDLES

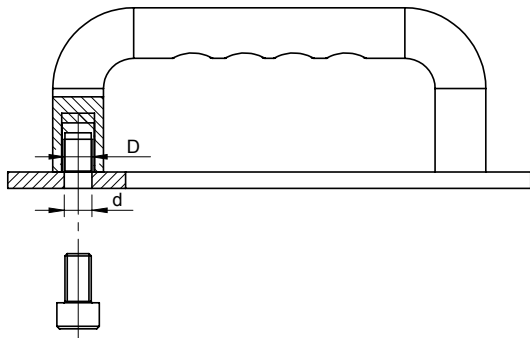


HANDLES

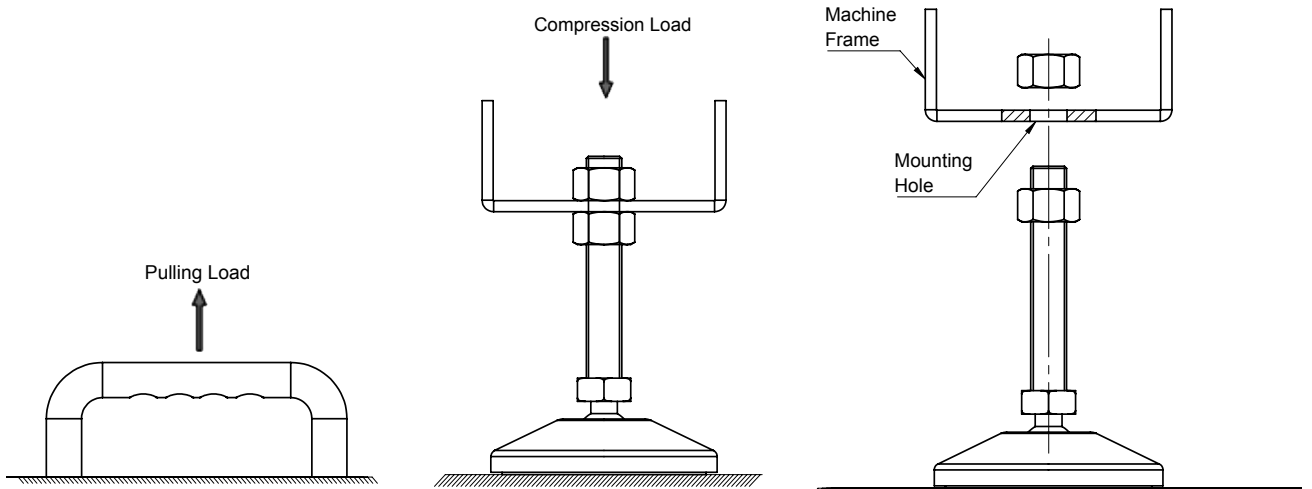
Standard Guideline



Recommended Mounting Hole Size For 'U' Handle Hole Type	
D - Stud Threading Size	d - Mounting Hole Size
M4	4.5
M5	5.5
M6	6.5
M8	8.5
M10	10.5
M12	12.5
M14	14.5
M16	16.5



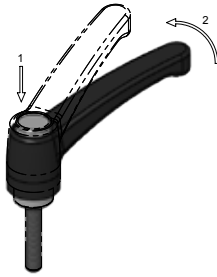
Recommended Mounting Hole Size For 'U' Handle Insert Type	
D - Insert Threading Size	d - Mounting Hole Size
M4	4.5
M5	5.5
M6	6.5
M8	8.5
M10	10.5
M12	12.5
M14	14.5
M16	16.5



Note :

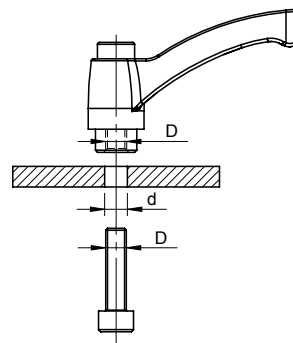
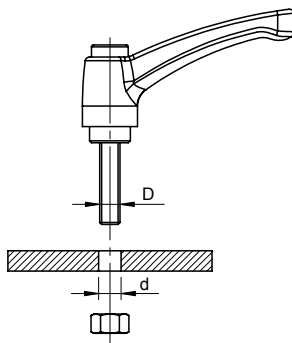
1. Mounting Hole must be clear (without threading)
2. Dont move Machine with Leveling Base fitted (With antiskid rubber fitted), otherwise rubber may get damaged.

Standard Guideline



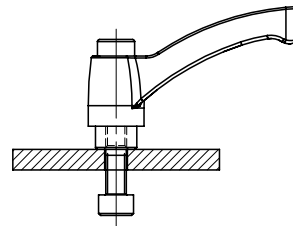
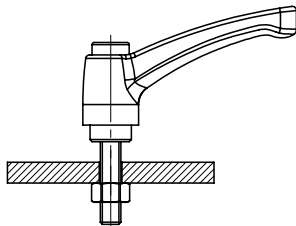
1. Press and Hold
2. Rotate (Upto 360°)

Torque Value for Stud Type Adjustable Handle			
Stud Threading Size	Material	Max. Value	
		kg.m	Nm
M6	Zinc	0.1	1
M8		0.14	1.4
M6	Aluminium	0.18	1.8
M8		0.36	3.6



Recommended Mounting Hole Size For 'Stud' Type Adjustable Handle	
D - Stud Threading Size	d - Mounting Hole Size
M4	4.5
M5	5.5
M6	6.5
M8	8.5
M10	10.5
M12	12.5
M14	14.5
M16	16.5

Recommended Mounting Hole for "Insert" Type Adjustable Handle	
D - Stud Threading Size	d - Mounting Hole Size
M4	4.5
M5	5.5
M6	6.5
M8	8.5
M10	10.5
M12	12.5
M14	14.5
M16	16.5



Torque Value for Stud Type Adjustable Handle			
Stud Threading Size	Material	Max. Value	
		kg.m	Nm
M4	Polyamide	0.1	1
M5		0.14	1.4
M6		0.18	1.8
M8		0.36	3.6
M10		0.66	6.6
M12		0.74	7.4
M14		0.8	8
M16		1.2	12

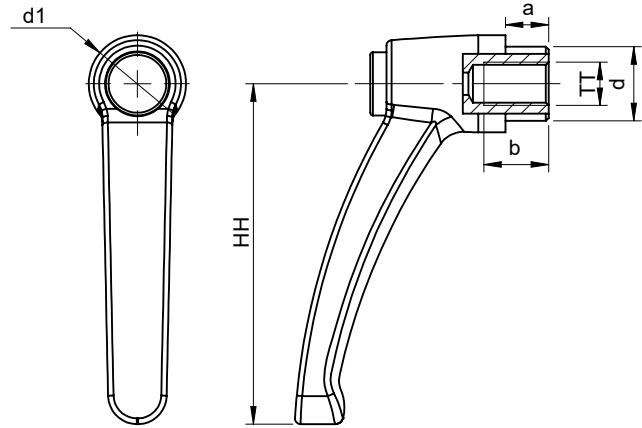
Torque Value for "Insert" Type Adjustable Handle			
Stud Threading Size	Material	Max. Value	
		kg.m	Nm
M4	Polyamide	0.1	1
M5		0.14	1.4
M6		0.1	1
M8		0.46	4.8
M10		0.48	5.4
M12		0.54	7.4
M14		0.6	6
M16		1.9	19

- I
- II
- III
- IV
- V
- VI
- VII
- VIII
- IX
- X
- XI
- XII
- XIII
- XIV

HANDLES

Adjustable Handle

Zinc, Polyamide



X Handle Material

- M** Zinc alloy
- P** Polyamide



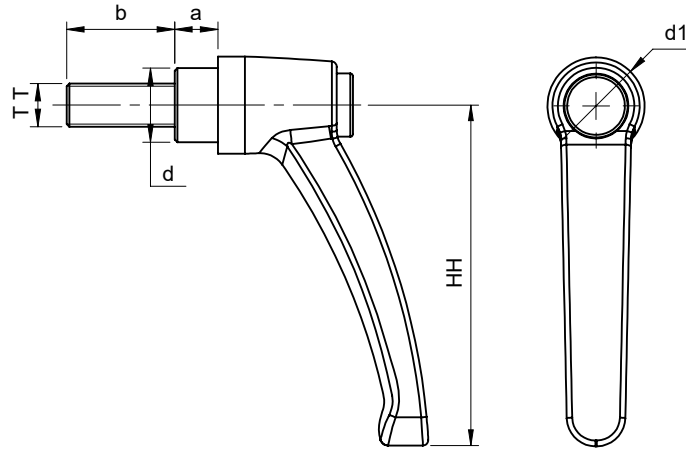
B Handle Style

- C** Closed (Solid)
- O** Open (Cored for weight reduction)

Zinc Handle									
TT	HH	a		b		d		d1	
		C	O	C	O	C	O	C	O
M4	45	4	5.6	9	9	Ø10	Ø10	Ø13	Ø10
M5									
M6									
M6	63	6.5	8	11	12	Ø13.5	Ø13.7	Ø17.5	Ø18
M8									
M8									
M8	78	8	7	14	15	Ø16	Ø16	Ø21	Ø21
M10									
M10									
M10	92	11	11	22	22	Ø19	Ø18.7	Ø24	Ø24
M12									
M12									
M12	108	12		22		Ø23		Ø30	
M14									

Polyamide Handle					
TT	HH	a	b	d	d1
		O	O	O	O
M4	45	6	10	Ø12	Ø16.5
M5					
M6					
M6	63	8	18	Ø15	Ø21
M8					
M8					
M8	78	10	18	Ø19	Ø24
M10					
M10					
M10	92	12	22	Ø25	Ø31
M12					
M12					
M12	92	12	22	Ø25	Ø31
M14					
M14	92	12	22	Ø25	Ø31
M16					

- The Stud/Insert are engaged via serrations with the Handle.
- Push the Button & Lift the handle upwards to disengage the serrations and adjust the Handle position.
- On releasing the Handle, return spring automatically engages the serrations once again.
- Standard Colour for Handle and Cap is Black.
- Studs/Inserts : M.S. Toughened Green Plated.
- SS-304 Studs & Inserts are available on minimum order of 100 nos.
- Green, Blue & Orange Caps are available on a minimum order of 50 nos each.
- Finish : Black PC for Zinc Handle



X Handle Material

- M** Zinc alloy
- P** Polyamide



B Handle Style

- C** Closed (Solid)
- O** Open (Cored for weight reduction)

Zinc Handle											
TT	HH	a		b				d		d1	
		C	O	C	O	C	O	C	O		
M4				20							
M5	M6	45	6	5.6	20	25	20	25	Ø10	Ø13	
					32	35	32	35			
					40	50	40	50			
M8	63	6.5	8	16	20	16	20				
				25	32	25	32				
				35	40	35	40	Ø13.5	Ø18		
				50	63	50	63				
				70	90	70	90				
				100	100						
M10	M12	78	8	7	20	25	20	25	Ø16	Ø21	
					30	32	30	32			
					40	50	40	50			
					63	70	63	70			
					80	80					
					100	100					
					110	110					
					120	120					
M10					50						
M12	92	11			20	25	20	25	Ø19	Ø24	
					32	40	32	40			
					50	63	50	63			
					80	80					
M12	M16	108	12		40	63			Ø23	Ø30	
					80						

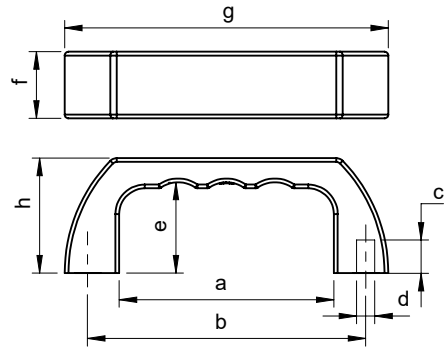
Polyamide Handle										
TT	HH	a	b	d	d1					
						O	O	O	O	
M5	M6	45	6	10	16	20	25	Ø12	Ø16.5	
				30	40	50				
M8	63	8	16	20	25	30		Ø15.3	Ø21	
				35	40	50	63			
				90	100					
M10				63	80					
M10	M12	78	10	20	25	32	40	Ø19	Ø24	
				50	60	63	70			
				100						
M12	M14	92	12	30	50	70		Ø25	Ø31	
M16										



HANDLES

Finger Grip

Polyamide



X Mounting Style

- I Insert
- S Counter Bore
- H Hex Bolt
- C Counter Sunk

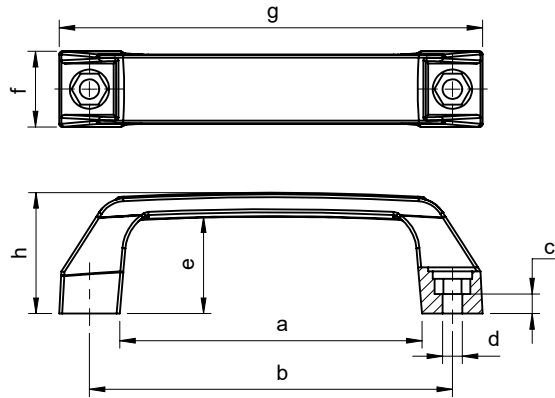


D H U R X - b

X	a	b	c	d	e	h	f	g	LC (kg)
I	71	92	10	M6 - MS	30	38	22	107	182
	99	117	12	M6 - Brass	30	42.5	26	134	170
S	71	92	6	For M6	30	40	22	110	250
	100	122			32	41	25	140	200
H	93.6	120	35		45	25	139	250	
	125	150	45		55	26	170	275	
C	93.6	120	13		35	46	25	139	250

Standard Grip

Polyamide



X Mounting Style

- S Counter Bore
- H Hex Bolt
- C Counter Sunk

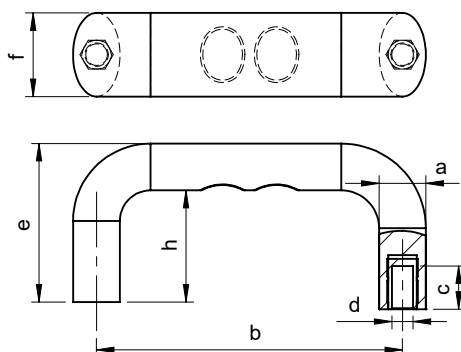


D H U R X - b

X	a	b	c	d	e	h	f	g	LC (kg)
S	100	122	6	For M6	32	41	25	140	200
H					34				200
C			14	For M5		150			

Round Finger Grip

Polyamide

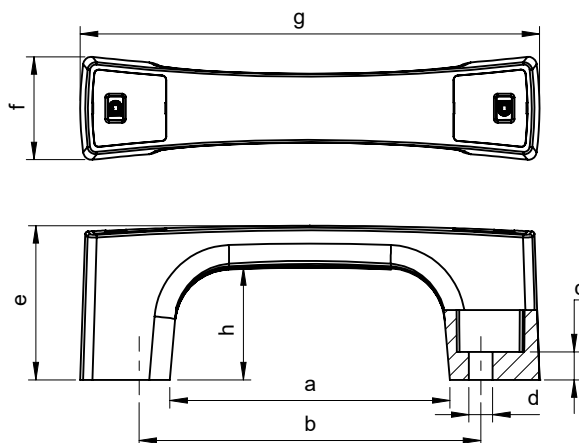


D H U G - b

a	b	c	d	e	h	f	LC (kg)
13	85	10	M6	44	30	23.2	275
15.5	117	16	M8	50	35	25	350
17.5	160			61.5	43.2	27.5	300
	175						260

Bowline

Polyamide



D H U F S - b

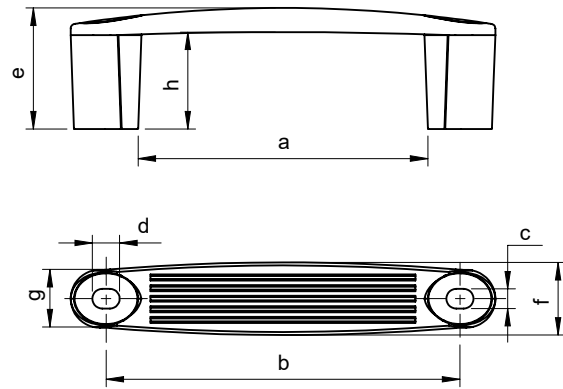
a	b	c	d	e	h	f	g	LC (kg)
13	122	10	For M8	55	40	36.7	164	80
16	150					37.6	190	100
	180					38.3	224	

- I
- II
- III
- IV
- V
- VI
- VII
- VIII
- IX
- X
- XI
- XII
- XIII
- XIV

HANDLES

Curved

Polyamide



Y

C Polyamide

R Rubber (TPE)

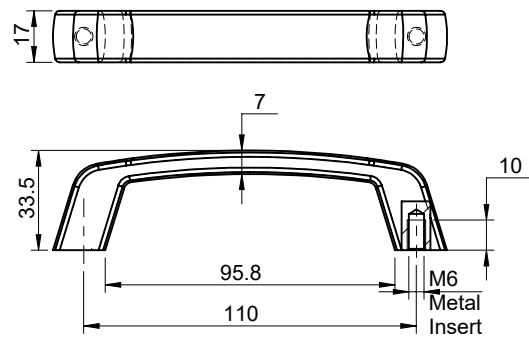
D H U A - X - Y

X	Y	a	b	c	d	e	h	f	g	LC (kg)
117	C	96	115.5	6.5	9	40	32	24	19	75
	C-R		117							63
150	C	127.6	150	9	12	48	38.5	25.5	19.5	100
	C-R		150							77

Standard Cap Colour is Black. Blue, Red & Yellow Caps are available on a minimum order of 50 nos each

Slim

Polyamide

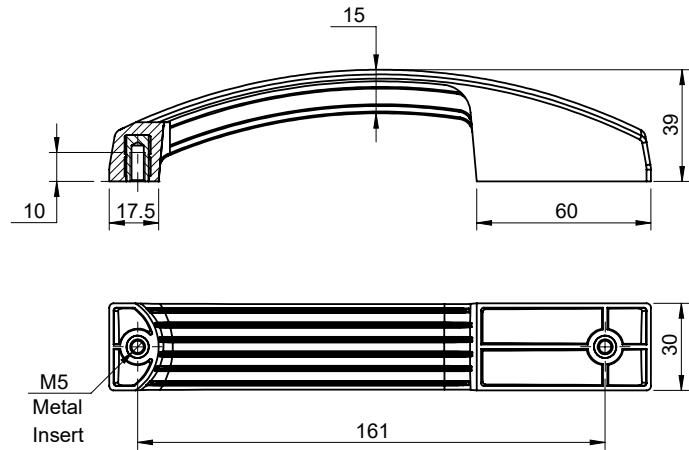


D H U R I - 110

Part Code	LC (kg)
DHURI-110	115

Topside

Polyamide

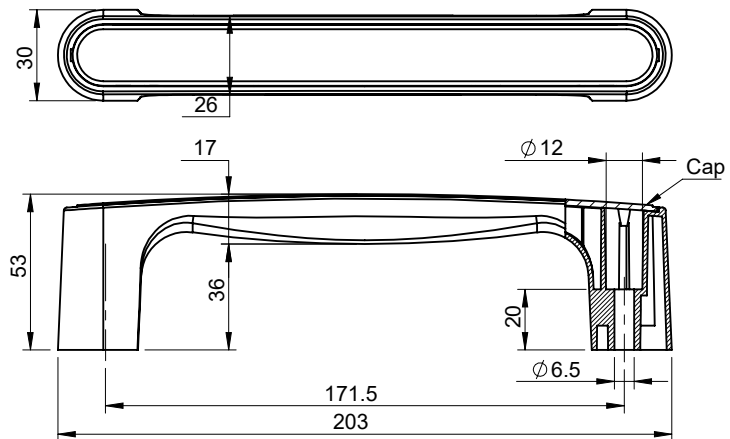


D H A I - 161

Part Code	LC (kg)
DHAI-161	-

Standard Grip

Polyamide



D H U R S - 171

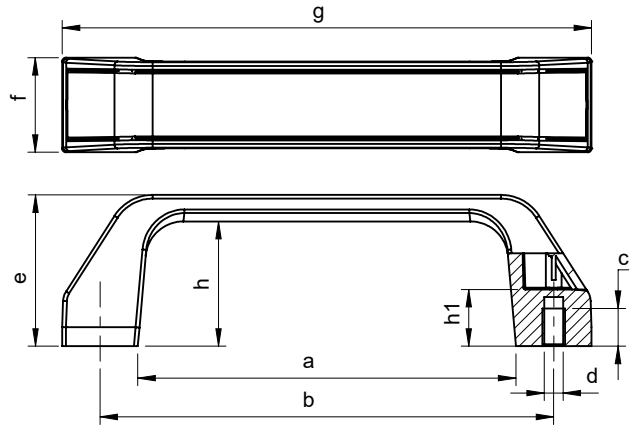
Part Code	LC (kg)
DHURS-171	-

- I
- II
- III
- IV
- V
- VI
- VII
- VIII
- IX
- X
- XI
- XII
- XIII
- XIV

HANDLES

Standard Grip

Zinc, Polyamide



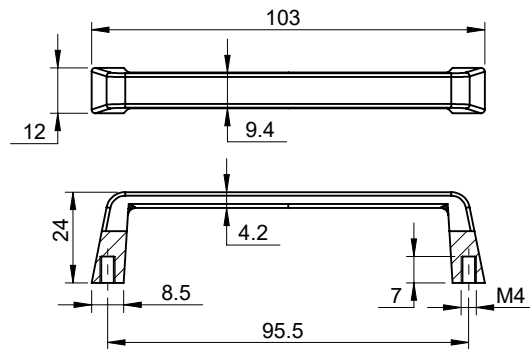
D H U Z S - 120

S	a	b	c	d	e	h	f	g	h1	Finish	LC (kg)
	100	120	10	M6	40	33	25	140	15	Black PC	200
S			7	For M6							150

Add "C" when cover is needed. Covers available in Red, Yellow, Blue. Add colour name at the end.
Add "S" when Counter Bore hole is needed

Slim

Zinc

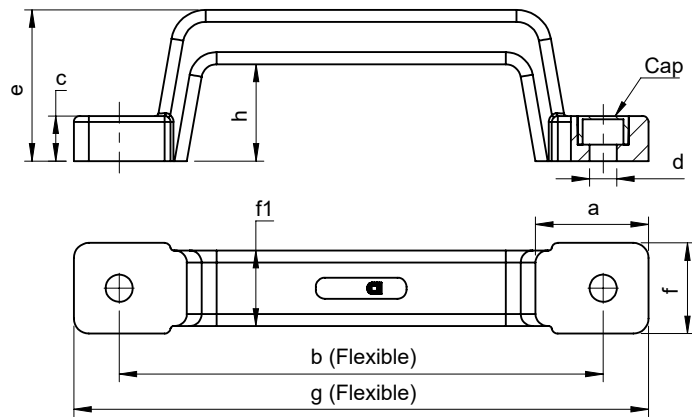


D H U Z - 95

Part Code	Finish	LC (kg)
DHUZ-95	Black PC	-

Hybrid (TPE)

Steel strip over molded with TPE



D H U R S - 160 X

X

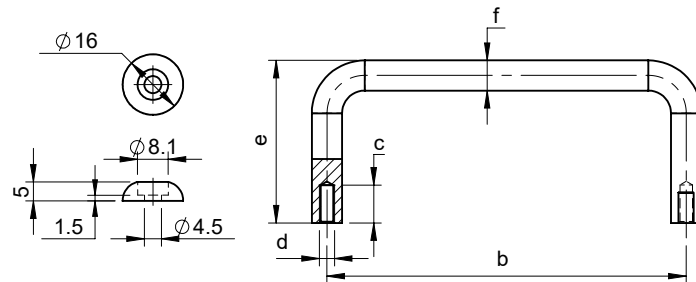
R TPE

RI TPE with Reinforced Metal Insert

X	a	b	c	d	e	h	f	g	f1
R	37.5	160	15	M8	50	32	30	190	25
RI									

U Handle

MS, SS-304



D H U M - b e

b	c	d	e	f		
55	8	M4	33	Ø8		
62			25			
92	10		35		60	
100			28		35	60
125			40		70	
150			27			

Minimum "e" : 25mm / Maximum "e" : 85mm. On standard sizes are available on minimum order request.
Also available in SS-304 on minimum order request (MOQ). Finish : Electro Polishing

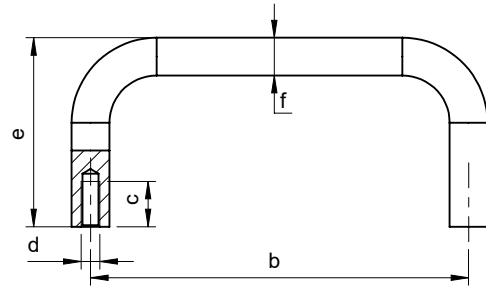
Cap : DHUMC / DHUMC-SS Cover To be ordered separately for DHUM series

- I
- II
- III
- IV
- V
- VI
- VII
- VIII
- IX
- X
- XI
- XII
- XIII
- XIV

HANDLES

U Handle

MS, SS-304



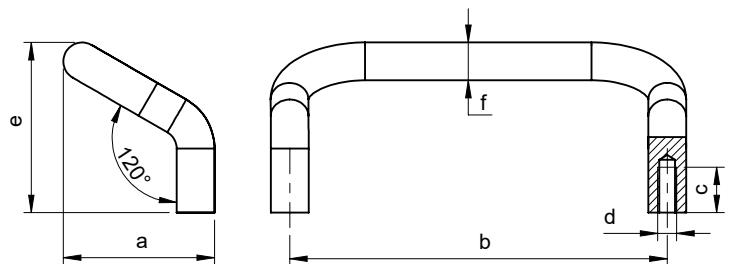
D H U M 10 - b e

b	c	d	e	f
60	12	M5	50	Ø10
100			38	
100			50	

Minimum "e" : 37mm / Maximum "e" : 70mm. On standard sizes are available on minimum order request. Also available in SS-304 on minimum order request (MOQ). Finish : Electro Polishing

U Handle

MS, SS-304



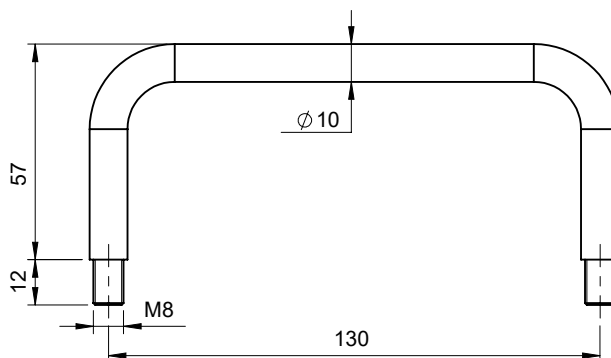
D H U M D 10 - b

a	b	c	d	e	f
40	100	12	M5	45	Ø10
	125				

Also available in SS-304 on minimum order request (MOQ). Finish : Electro Polishing

U Handle

MS, SS-304

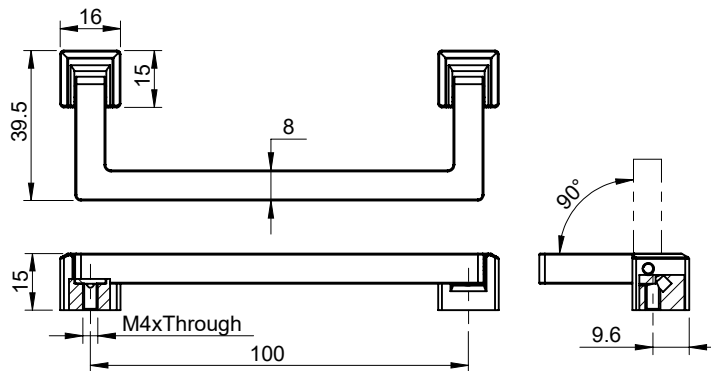


D H U M 10 - R - 13057

Part Code	Finish	LC (kg)
DHUM10-R-13057	CH	-
Non standard sizes are available on minimum order request (MOQ)		
Also available in SS-304 on minimum order request (MOQ). DHUM10-R-13057-SS. Finish : Electro Polishing		

Swing Handle

Zinc



D H S - 100

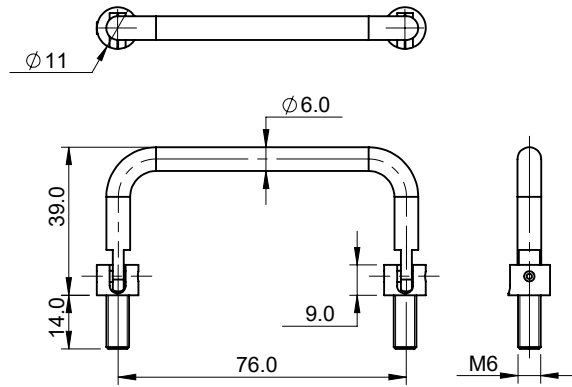
Part Code	Finish	LC (kg)
DHS-100	CH	25

- I
- II
- III
- IV
- V
- VI
- VII
- VIII
- IX
- X
- XI
- XII
- XIII
- XIV

HANDLES

Swing Handle

MS

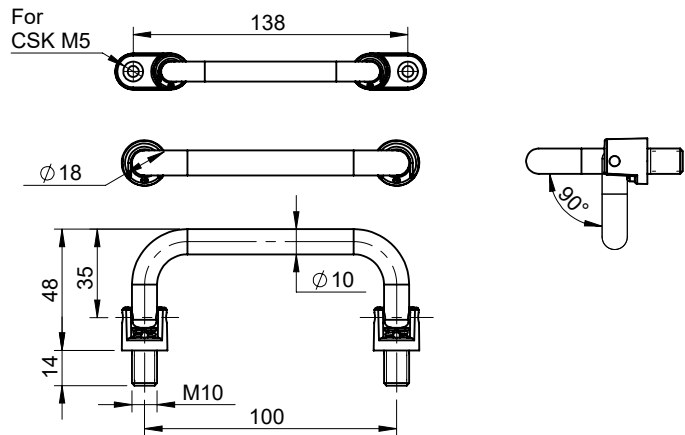


D H M - 7632

Part Code	Finish	LC (kg)
DHM-7632	Black PC	60

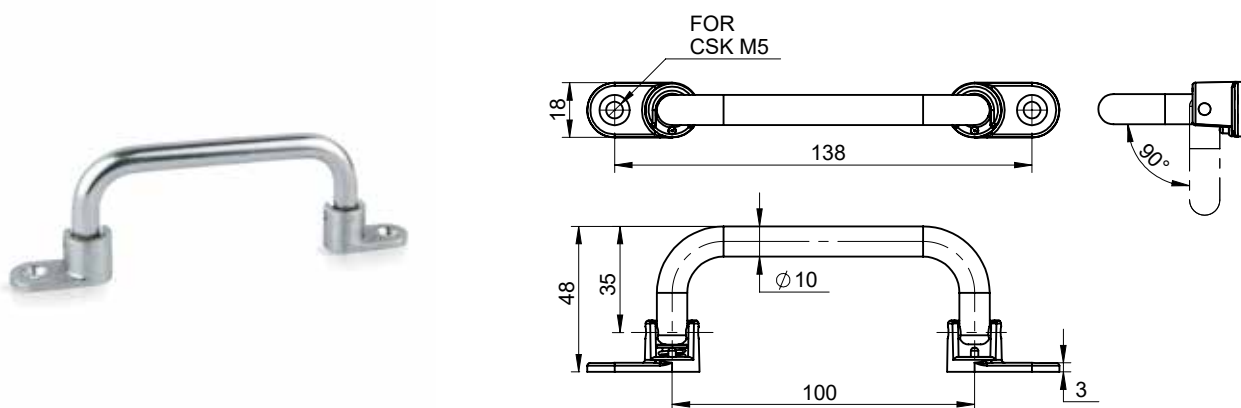
Stay Handle

SS-304



D H M - 10 - 100 - B

Part Code	Finish	LC (kg)
DHM-10-100-B	Electro Polishing	62

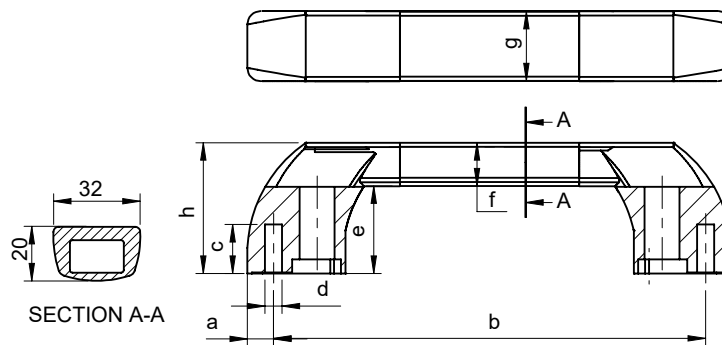


D H M - 10 - 100 - F

Part Code	Finish	LC (kg)
DHM-10-100-F	Electro Polishing	62

Extrusion Handle

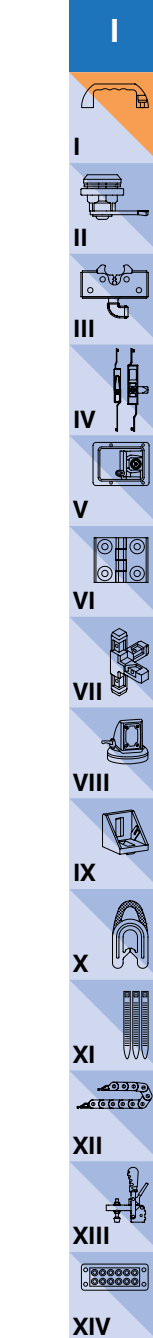
Aluminium



D H A E - b

b	Finish	b (Length)
DHAE-b	SPC	200 To 1000

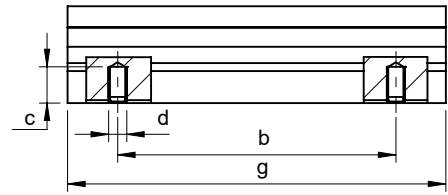
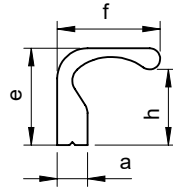
Aluminium Extrusion-SPC, Polyamide Ends



HANDLES

Extrusion Handle

Aluminium



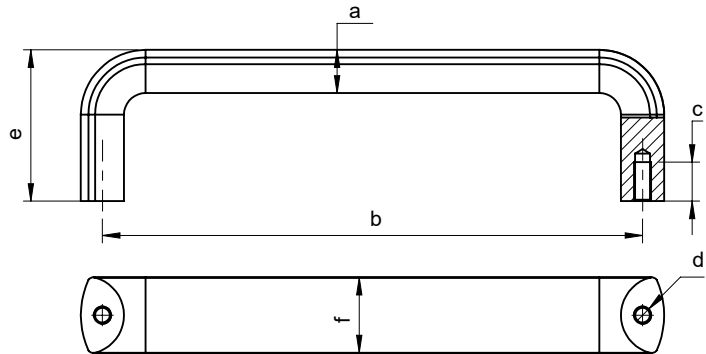
D H A E - 2 - b - P

- P** Finish
PC Black PC
SPC Silver Sparkle PC
RAW Raw

a	b	c	d	e	f	h	g
10	92	10	M6	32	34	25	125
	120						150
	970						1000

Extrusion Handle

Aluminium



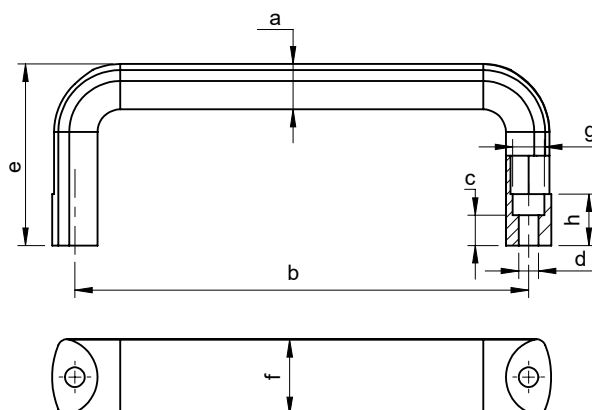
D H A E - X - b - P

- P** Finish
PC Black PC
SPC Silver Sparkle PC
RAW Raw

X	a	b			c	d	e	f
3	20	250	300	400	18	M8	70	35
		500	600					
4	15	128	150	192	18	M8	60	25
5	11.5							

Extrusion Handle

Aluminium



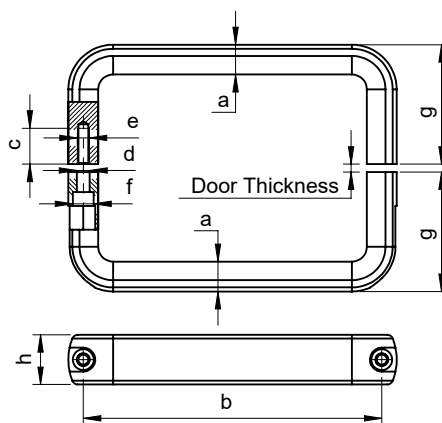
D H F A E - 4 - b - P

- P** Finish
- PC** Black PC
- SPC** Silver Sparkle PC
- RAW** Raw

a	b	c	d	e	h	f	g
15	128 150 192	10	Ø6.5	60	17	25	Ø10.5

Extrusion Handle

Aluminium



D H F A E - 4 - U6 B - P

- P** Finish
- PC** Black PC
- SPC** Silver Sparkle PC
- RAW** Raw

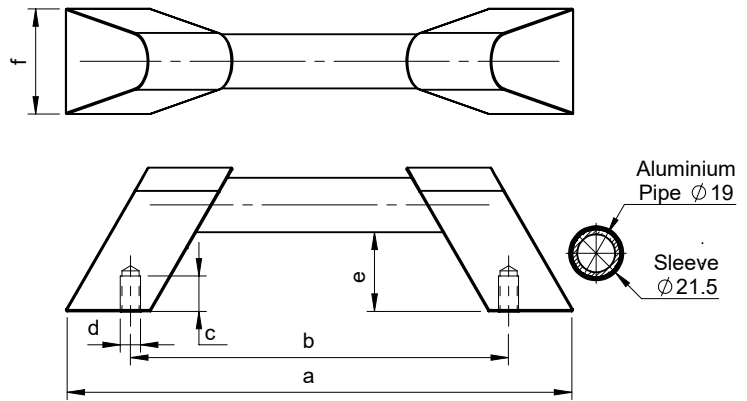
a	b	c	d	e	h	f	g
15	128 150 192	10	Ø6.5	60	17	25	Ø10.5



HANDLES

Pipe Handle - Round Straight Pipe (Inline Endcap Bases)

Aluminium, Polyamide



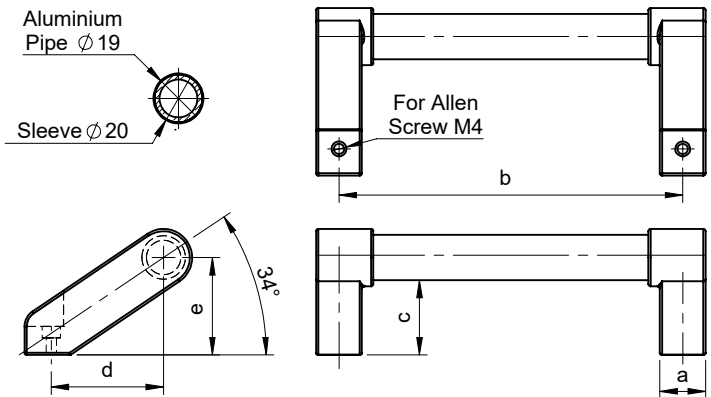
D H E X - b

b	Pipe Finish	b (Length)
DHEX-b	with Rubber Sleeve	100 To 1000

Ends : DHEX-E, Available in pairs only

Pipe Handle - Round Straight Pipe

Aluminium, Polyamide



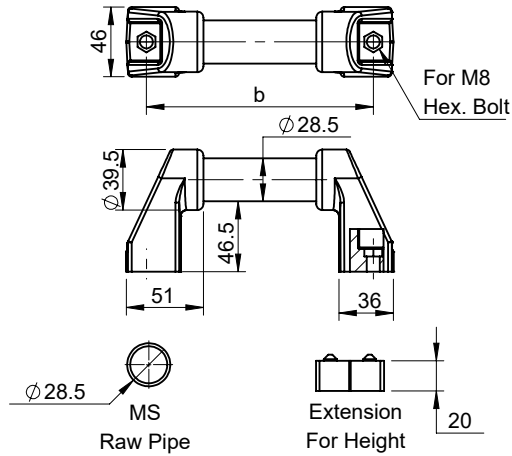
D A H - 20 - b

b	Pipe Finish	b
DAH-20-b	with Rubber Sleeve	100 To 1000

Ends : DAH-20-E, Available in pairs only

Pipe Handle - Round Straight Pipe (Inline Endcap Bases)

MS, Polyamide

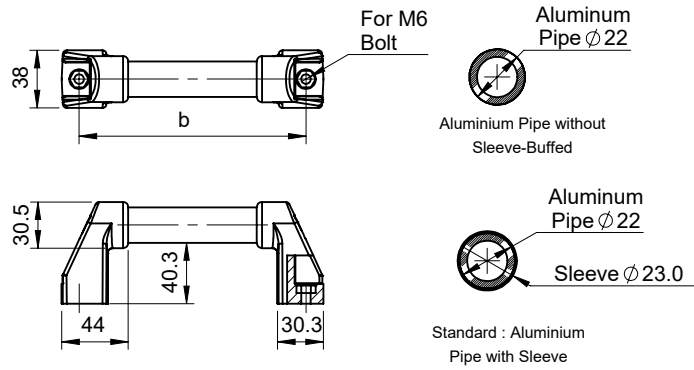


D H F L - b

b	Pipe Finish	b (Length)
DHFL-b	Blue Zinc Plating	150 To 1500
Ends : DHFL-E , Available in pairs only		
Centre Support : DHFL-S		
Extension for Height : A-20		

Pipe Handle - Round Straight Pipe (Inline Endcap Bases)

Aluminium, Polyamide



D H F S - b

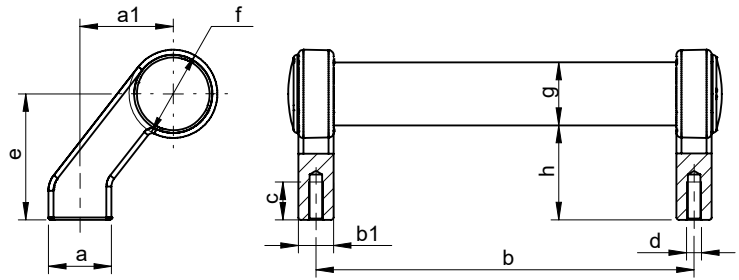
b	Pipe Finish	b
DHFS-b	with Rubber Sleeve	150 to 1200
Ends : DHFS-E , Available in pairs only		

- I
- II
- III
- IV
- V
- VI
- VII
- VIII
- IX
- X
- XI
- XII
- XIII
- XIV

HANDLES

Pipe Handle - Round Straight Pipe (Offset Bases)

Aluminium, Zinc



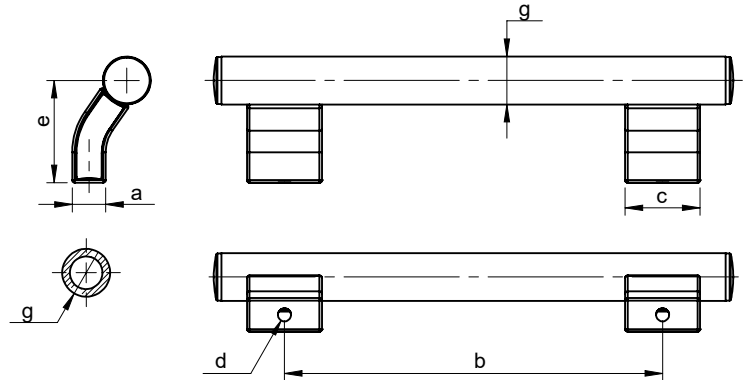
D M A B H - X - b

X	a	a1	b	b1	c	d	e	f	g	h
25	25	37	100 to 1000	14	15	M6	50	Ø35	Ø25	37.5
32									Ø32	34

Ends : Black Powder Coated

Pipe Handle - Round Straight Pipe

Aluminium, Zinc



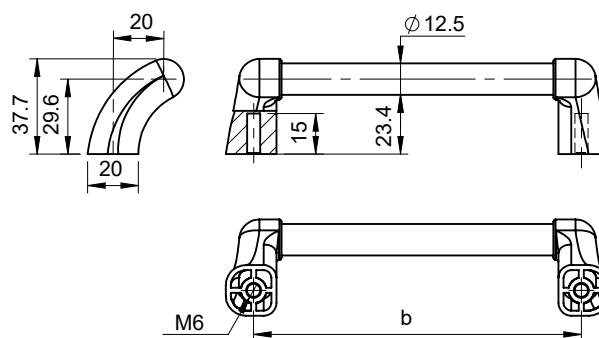
D M A H - X - b

X	a	b	c	d	e	g
19	13.3	150 to 1000	30	M6x 12lg	39	Ø19
32	18.4		40.5	M8x 15lg	55	Ø32

Ends : Black Powder Coated

Pipe Handle - Round Straight Pipe

Aluminium, Polyamide

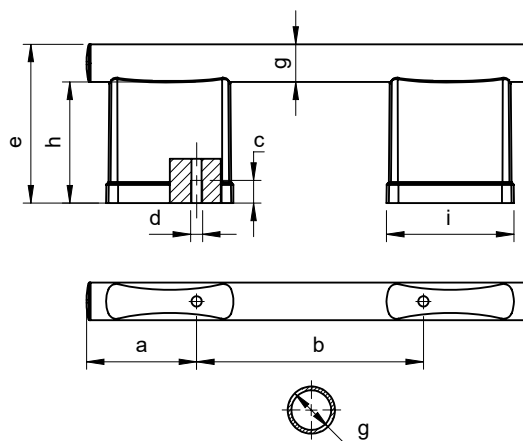


D A H - 13 - b

b	b
DAH-13-b	130 to 250
Polyamide Ends	

Pipe Handle - Round Straight Pipe

Aluminium, SS-304, Zinc



D M R H - X - A - b

X	A	a	b	c	d	e	g	h	j
6	32	75	200 to 1000	15	M8	80	Ø32	48	83
7	25					105	Ø25	80	

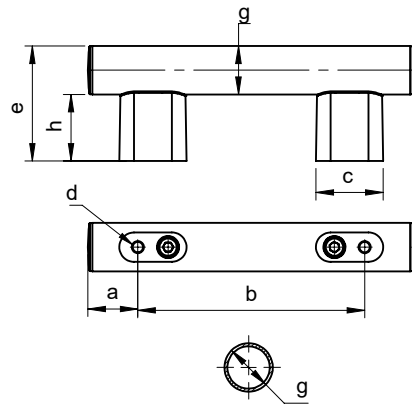
Ends : Black Powder Coated

- I
- II
- III
- IV
- V
- VI
- VII
- VIII
- IX
- X
- XI
- XII
- XIII
- XIV

HANDLES

Pipe Handle - Round Straight Pipe

Aluminium, Polyamide

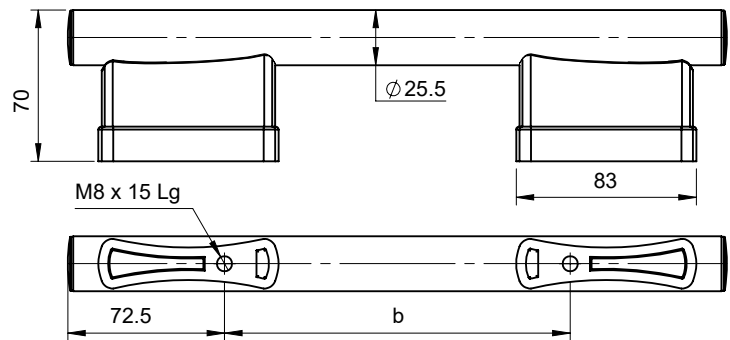


D H F - X - A - b

X	A	a	b	c	d	e	g	h
44	25	32.5	200 to 1000	44.5	M8 X20Lg	69	Ø25.5	44
60	32	33		45		76	Ø32	60

Pipe Handle - Round Straight Pipe

Zinc, SS-304



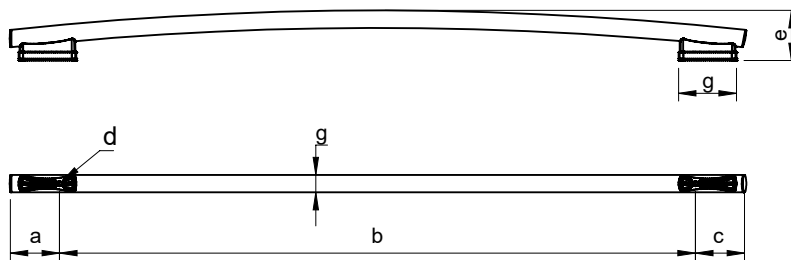
D M R H 3 - 25 - b

b	b
DMRH3-25-b	200 to 1200

Ends : Black Powder Coated

Pipe Handle - Round Straight Pipe

Zinc, SS-304



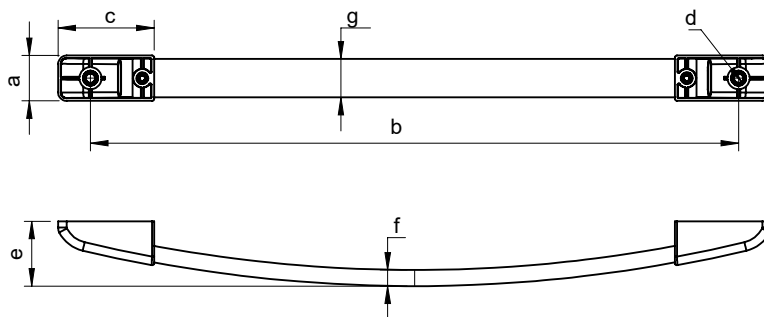
D M R H X - 25 - b

X	a	b	c	d	e	g
1	71	400	71	M8 X 15lg	79.4	Ø25.5
2				M8 X 20lg	105	
4				M8 X 12lg	73	

Ends : Black Powder Coated

Pipe Handle - Capsule Bent Pipe

Aluminium, Polyamide



D M C P H 1 - b

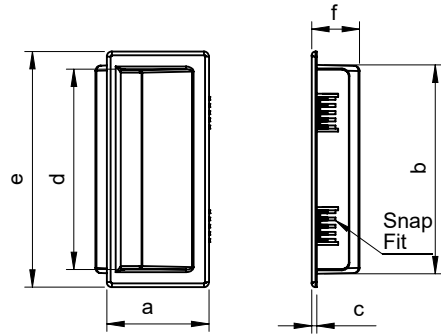
a	b	c	d	e	g	f
42	600	89	M10 X 19lg	60	35.5	15
	1000			79		

- I
- II
- III
- IV
- V
- VI
- VII
- VIII
- IX
- X
- XI
- XII
- XIII
- XIV

HANDLES

Pocket Handles - Angled

Polyamide

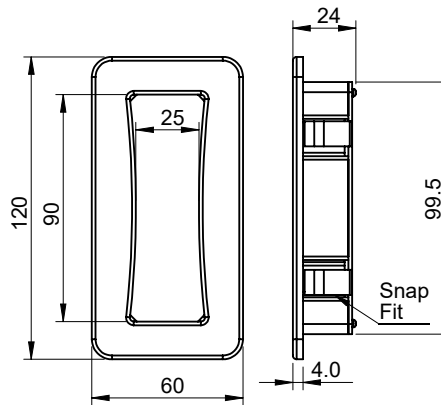


D H P - X

X	a	b	c	d	e	f	Cut Out	Sheet Thk.
93	36.3	87	2	83	93.5	19	87.5 x 30.7	Max. 2.5
94	40.5	83		79.5			84 x 35	Max. 3
110	57.5	98.2		94	110.5	28	99.5 x 49	Max. 3
137	36.5	131.3		128	137.5	19	132 x 30.6	Max. 1.8
105-1.2	26	90	3	87	105	19	90.3 x 19.8	1.2
105-1.5								1.5
105-2								2
11074	74	100	2.3	96	110	33.3	100 x 65	Max. 3

Pocket Handles - Curved

Polyamide

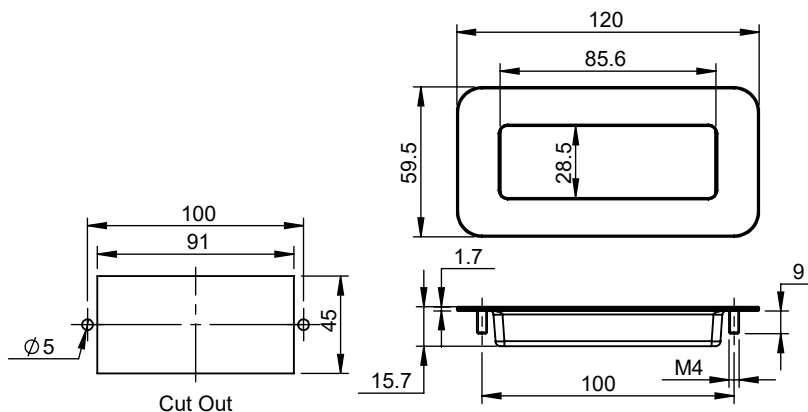


D H P - 120

Part Code	Cut Out	Sheet Thk.
DHP-120	100 x 49	Max. 2

Pocket Handles

SS-304

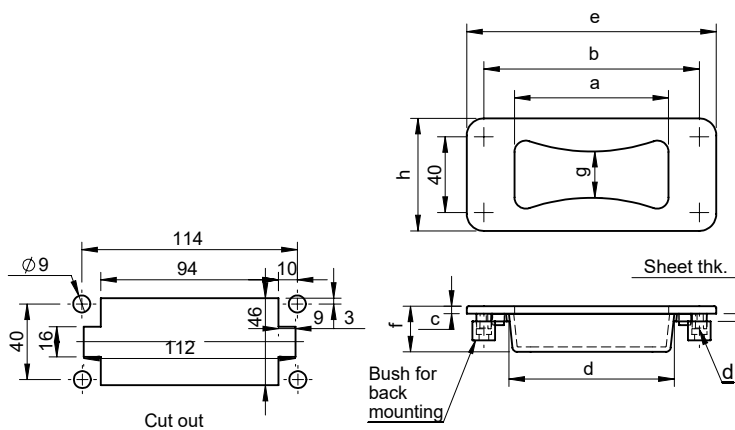


D H R S S - 120

Part Code	Sheet Thk.
DHRSS-120	Max. 4

Pocket Handles - Curved

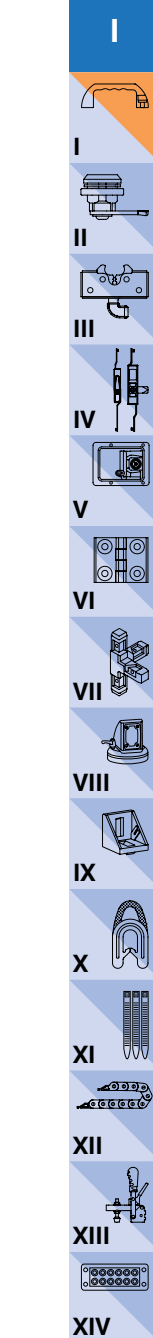
Zinc



D H R Z - 130

Part Code	Sheet Thk.
DHRZ-130	Max. 4

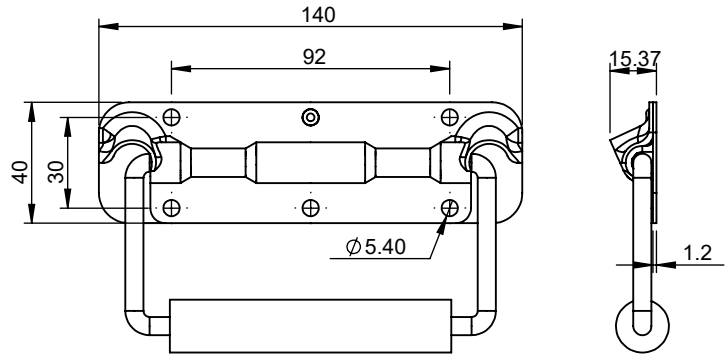
Finish : Black Powder Coated



HANDLES

Crate Handle

MS

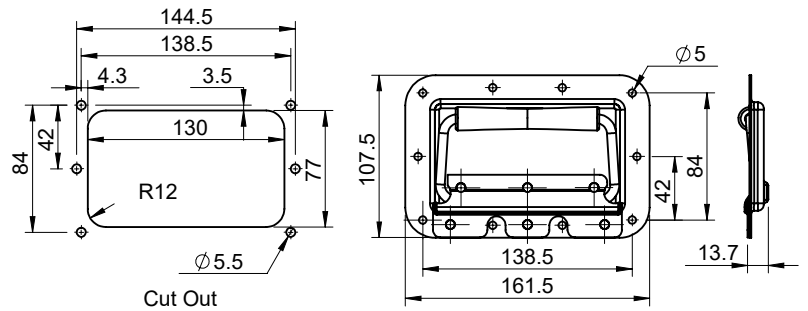


D C P H - 140 - BZ

Part Code	LC (kg)
DCPH-140-BZ	50
Finish : Blue Zinc Plated	

Crate Handle

MS

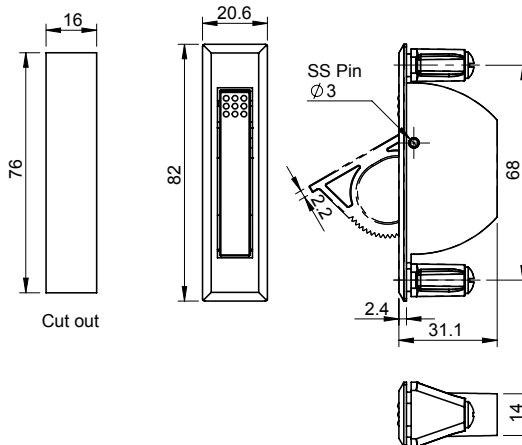


D C P H - 160 - BZ

Part Code	LC (kg)
DCPH-160-BZ	60
Finish : Blue Zinc Plated	

Flush Pull Handle

Polyamide

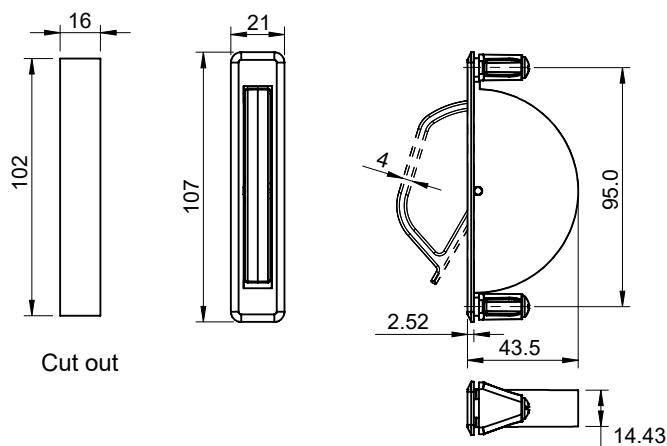


D H F P - 68

Part Code
DHFP-68

Flush Pull Handle

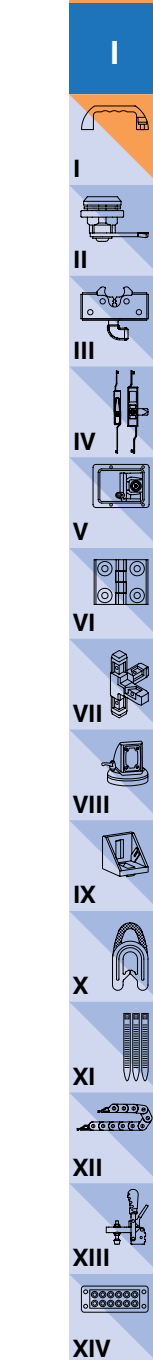
Zinc, Polyamide



D H F P - 94 - P

- P** Finish
- PC** Black PC
 - SPC** Silver Sparkle PC

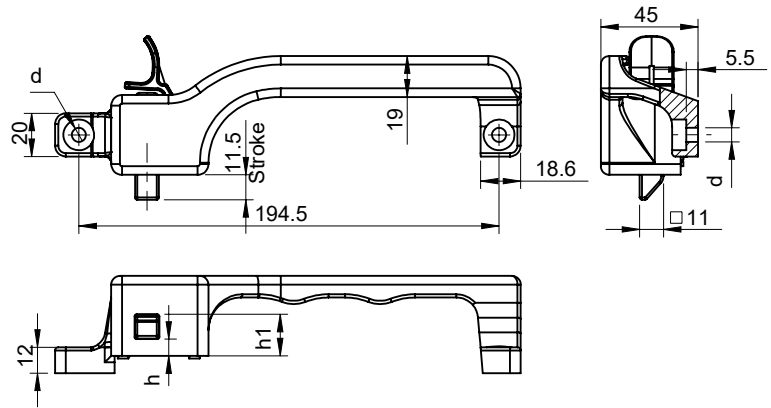
Part Code	LC (kg)
DHFP-94-PC	10
DHFP-94-SPC	



HANDLES

Slam Handle

Zinc

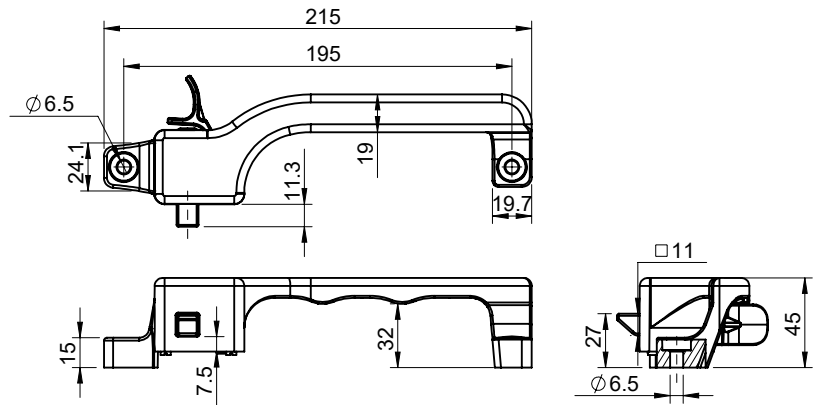


D Z H S - X

X	LC (kg)
L / R	40
Finish : Black Powder Coated	

Slam Handle

Zinc

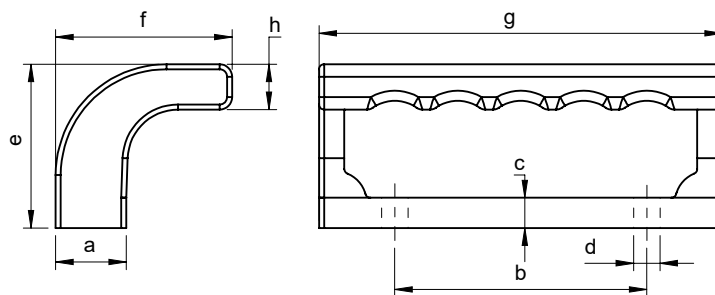


D Z H S - 195 - X

X	LC (kg)
L / R	60
Finish : Black Powder Coated	

Angular Handle - Offset

Polyamide



D H A - X - b

X Mounting Style

I Insert

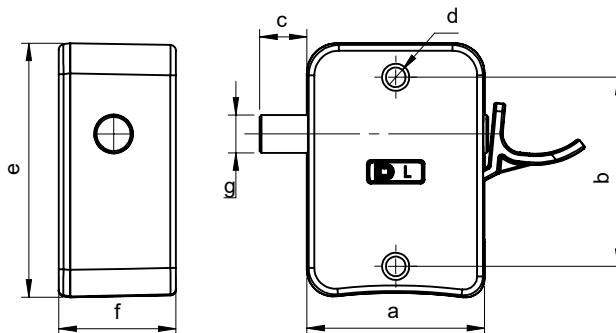
S Counter Bore



X	a	b	c	d	e	f	g	h
I	28	140	12	M6	65	70	160	18
S		100		Ø6.5				

Press Handle

Zinc



D Z W C2 - X

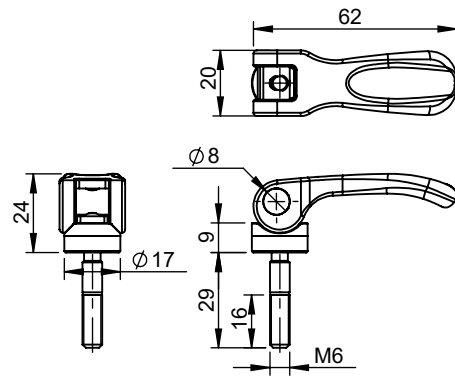
X	a	b	c	d	e	f	g
L / R	47	50	12.5	M6	67	31	Ø10

Finish : Black Powder Coated

HANDLES

Squeeze Action Handle

Zinc, SS-304

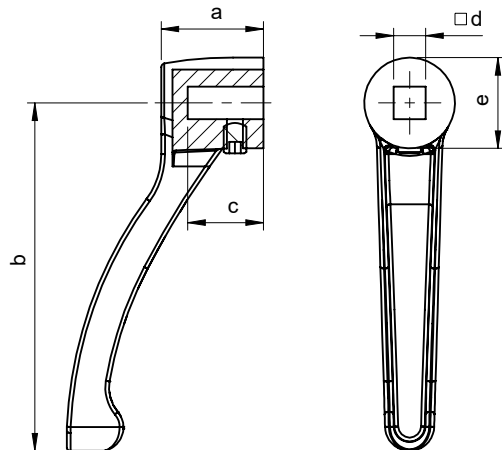


D M A C S - 0655 - 29

Part Code
DMACS-0655-29
Finish : Black Powder Coated

Lever Handle

Zinc



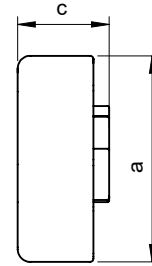
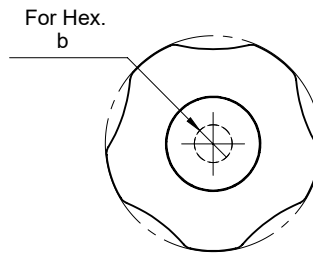
D M L - 29 - X

<input checked="" type="checkbox"/>	a	b	c	d	e
29-8	27	92	20	8.5	Ø24
29-10				10.2	

Finish : Black Powder Coated

Knobs - Shell Knob

Polyamide

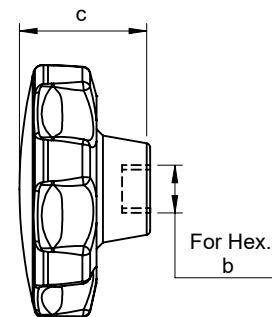
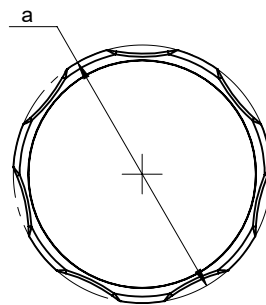


X	a	b	c
34-06	34	M6	15.5
40-08	39.5	M8	17.5
44-10	44	M10	21.5

Standard Knob Colour is Black. Standard Cap Colour is Black.
Different Colour Caps are available on minimum order of 100 nos each.

Knobs - Shell Knob

Polyamide



X	a	b	c
45-08	45	M8	22.5
55-10	55	M10	27.5
65-12	65	M12	32.5

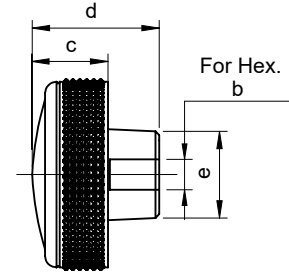
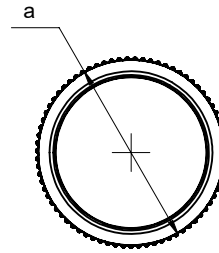
Standard Knob Colour is Black. Standard Cap Colour is Black.
Different Colour Caps are available on minimum order of 100 nos each.



HANDLES

Knobs - Shell Knob

Polyamide



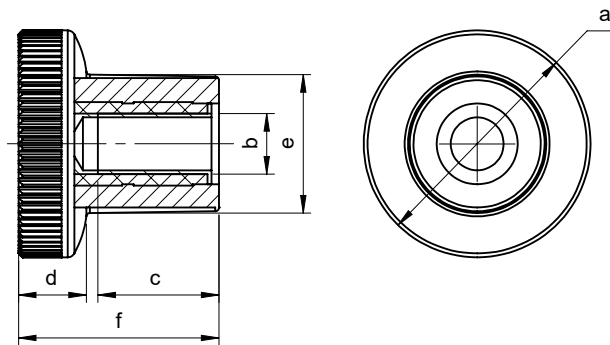
D K C - X

X	a	b	c	d	e
50-08	Ø50	M8	20	34	Ø23
60-10	Ø60	M10	24	39	

Standard Knob Colour is Black. Standard Cap Colour is Black.
Different Colour Caps are available on minimum order of 100 nos each.

Knobs - Pull Knob

Polyamide, MS



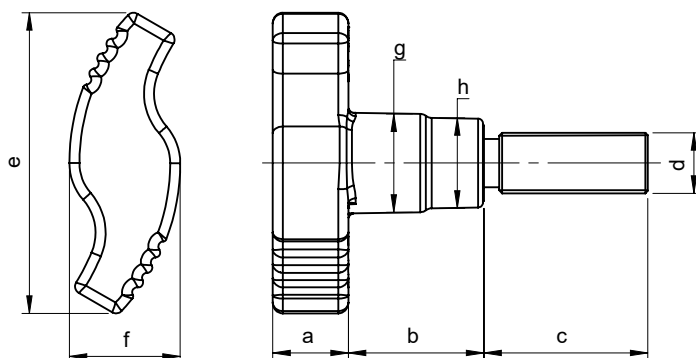
D P K - X

X	a	b	c	d	e	f
25-06	Ø25	M6	10	8	Ø14.2	22
30-08	Ø30	M8	16	9	Ø18.3	26.5

Inserts : M.S. Toughened Blue Zinc Plating.

Knobs - Pull Knob

Polyamide



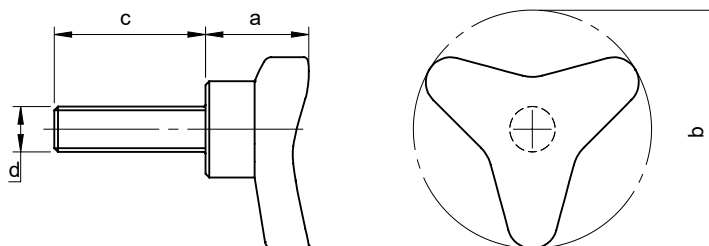
D P K - 60 - X

<input checked="" type="checkbox"/>	a	b	c		d	e	f	g	h
10-20	15	27	20	30	M10	59.6	22	Ø19.5	Ø18
10-30			40	50					
10-40			60						
10-60			30	40	M12				
12-30			50	70					
12-40									
12-50									
12-70									

Studs : M.S. Toughened Blue Zinc Plating. SS-304 Studs are also available on minimum order of 100 nos.

Knobs - Pull Knob

Polyamide



D K T R S - X

<input checked="" type="checkbox"/>	a	b	c	d
63-12-40	28	Ø63	40	M12

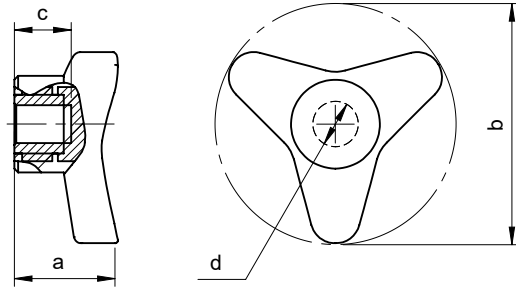
Studs : M.S. Toughened Blue Zinc Plating. SS-304 Studs are also available on minimum order of 100 nos.

- I
- II
- III
- IV
- V
- VI
- VII
- VIII
- IX
- X
- XI
- XII
- XIII
- XIV

HANDLES

Knobs - Pull Knob

Polyamide, MS



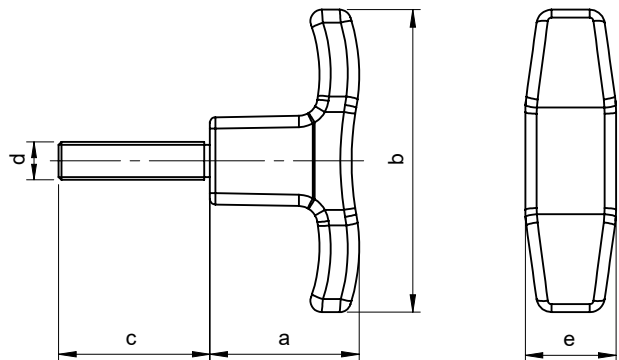
D K T R I - X

<input checked="" type="checkbox"/>	a	b	c	d
63-06	28	Ø63	16	M6
63-08				M8
63-10				M10
63-12				M12

Inserts : M.S. Toughened Blue Zinc Plating. SS-304 Insert are also available on minimum order of 100 nos.

Knobs - Pull Knob

Polyamide, MS



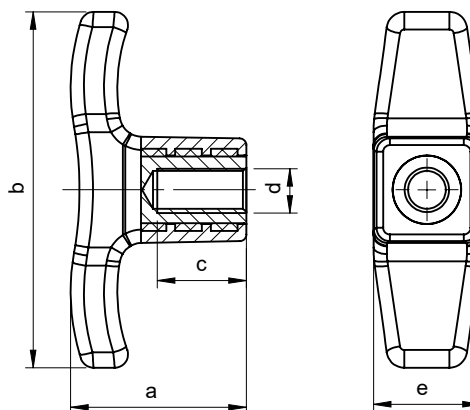
D H T S - X

<input checked="" type="checkbox"/>					a	b	c					d	e
06-20					34	54.5	20					M6	15
08-16	08-20	08-25	08-40	08-50			16	20	25	40	50	M8	
10-50							50					M10	
80-10-40	80-10-50	80-10-70	80-10-90	80-10-100	39.5	80	40	50	70	90	100	M10	24
80-12-40	80-12-50	80-12-70	80-12-90	80-12-100			M12						

Studs : M.S. Toughened Blue Zinc Plating. SS-304 Studs are also available on minimum order of 100 nos.

Knobs - Pull Knob

Polyamide, MS



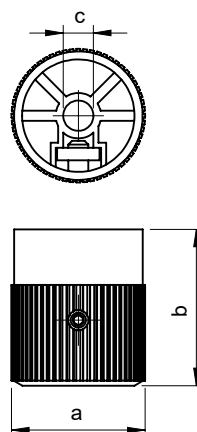
D H T I - X

X	a	b	c	d	e
06	34	54.5	20	M6	15
08				M8	
80-08	39.5	80		M8	24
80-10				M10	
80-12				M12	

Inserts : M.S. Toughened Blue Zinc Plating. SS-304 Insert are also available on minimum order of 100 nos.

Knobs - Knurled Knob

Polyamide



D K K - X

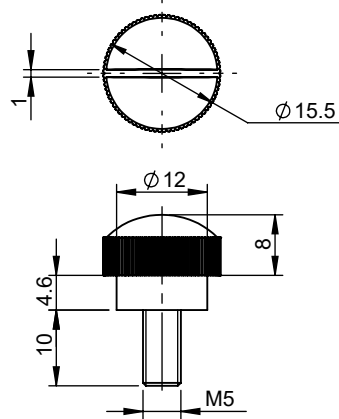
X	a	b	c
2630	Ø26.5	31	Ø6
3445	Ø34.5	45	Ø10

- I
- II
- III
- IV
- V
- VI
- VII
- VIII
- IX
- X
- XI
- XII
- XIII
- XIV

HANDLES

Knobs - Knurled Knob

Polyamide, MS

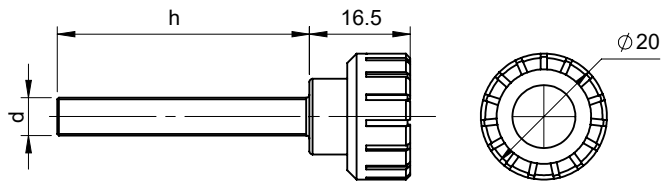


D K S - 15 - 05 - 10

Part Code
DKS-15-05-10

Knobs - Thumb Knob

Polyamide, MS



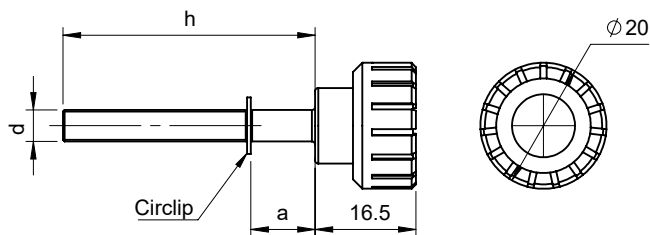
D K S - 20 - X

X				d	h			
03-10	03-16			M3	10	16		
04-10	04-16	04-20	04-26	M4	10	16	20	26
05-10	05-16	05-20	05-25	M5	10	16	20	25
05-30	05-40				30	40		
06-10	06-16	06-20	06-25	M6	10	16	20	25
06-30	06-35	06-40	06-70		30	35	40	70

Studs : M.S. Toughened Blue Zinc Plating. SS-304 Studs are also available on minimum order of 100 nos.

Knobs - Thumb Knob

Polyamide, MS



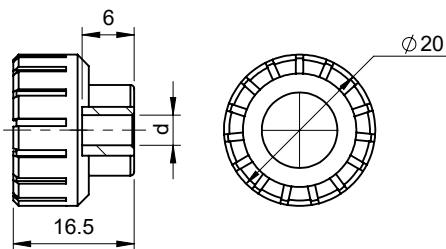
D K S C - 20 - X

X				a			d	h			
05-20	05-25	05-30		5	10	10	M5	20	25	30	
06-25	06-30	06-25	06-40	10			M6	25	30	35	40

Studs : M.S. Toughened Blue Zinc Plating. SS-304 Studs are also available on minimum order of 100 nos.

Knobs - Thumb Knob

Polyamide, MS



D K I - 20 - X

X				d			
03	04	05	06	M3	M4	M5	M6

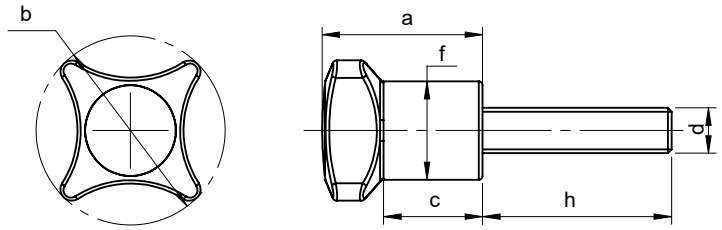
Inserts : M.S. Toughened Blue Zinc Plating. SS-304 Inserts are also available on minimum order of 100 nos.

- I
- II
- III
- IV
- V
- VI
- VII
- VIII
- IX
- X
- XI
- XII
- XIII
- XIV

HANDLES

Knobs - Lobed Knob

Polyamide, MS



D K C S Q S - X - A

X	A					a	b	c	d	h					f
25	04-10	04-16	04-26			21.5	Ø25	13.6	M4	10	16	26			Ø13
	05-10	05-16	05-20	05-25	05-30					M5	10	16	20	25	
	05-40								M6		40				
	06-10	06-16	06-20	06-25	06-27					M6	10	16	20	25	
	06-30	06-35	06-40	06-70					M6		30	35	40	70	
40	05-10	05-16	05-20	05-25	05-30	23.5	Ø40	14		M5	10	16	20	25	30
	05-35	05-40							M5		35	40			
	06-16	06-20	06-25	06-30	06-40					M6	16	20	25	30	40
	06-50	06-70							M6		50	70			
	08-16	08-20	08-35							M8	16	20	35		

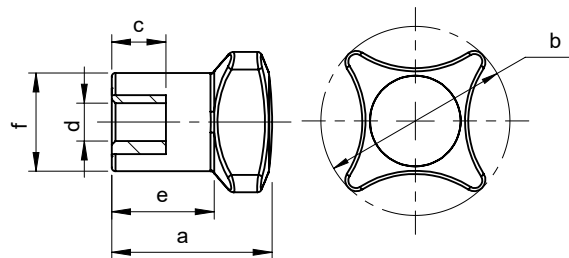
Standard Knob Colour is Black. Standard Cap Colour is Black.

Different Colour Caps are available on minimum order of 100 nos each.

Studs : M.S. Toughened Blue Zinc Plating. SS-304 Studs are also available on minimum order of 100 nos.

Knobs - Lobed Knob

Polyamide, MS



D K C S Q I - X - A

X	A			a	b	c	d			e	f
25	04	05	06	21.5	Ø25	8	M4	M5	M6	13.6	Ø13
40	06	08		23.5	Ø40	10	M6	M8		14	Ø17

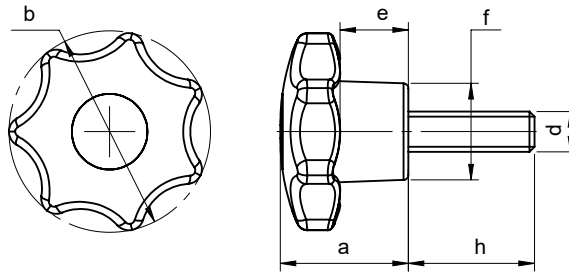
Standard Knob Colour is Black. Standard Cap Colour is Black.

Different Colour Caps are available on minimum order of 100 nos each.

Inserts : M.S. Toughened Blue Zinc Plating. SS-304 Inserts are also available on minimum order of 100 nos.

Knobs - Lobed Knob

Polyamide, MS



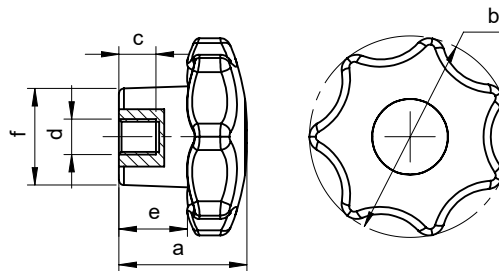
D K C S - X - A

X	A					a	b	e	d	h					f
40	06-10	06-16	06-20	06-25	06-30	25.5	Ø40	13.5	M6	10	16	20	25	30	Ø19.4
	06-35	06-40	06-70							35	40	70			
	08-16	08-20	08-25	08-30	08-35				M8	16	20	25	30	35	
	08-40	08-50	08-60	08-70						40	50	60	70		
50	08-16	08-20	08-25	08-30	08-40	32.5	Ø50	18.5	M8	16	20	25	30	40	Ø21.7
	08-50	08-60								50	60				
	10-20	10-30	10-35	10-40	10-50				M10	20	30	35	40	50	
	10-60	10-65	10-70	10-100						60	65	70	100		

Standard Knob Colour is Black. Standard Cap Colour is Black.
 Different Colour Caps are available on minimum order of 100 nos each.
 Studs : M.S. Toughened Blue Zinc Plating. SS-304 Studs are also available on minimum order of 100 nos.

Knobs - Lobed Knob

Polyamide, MS



D K C I - X - A

X	A		a	b	c	d		e	f
40	06	08	25.5	Ø40	10	M6	M8	13.5	Ø19.5
50	08	10	32.5	Ø50	16	M8	M10	18.5	Ø21.7

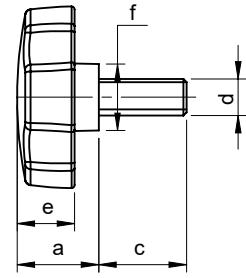
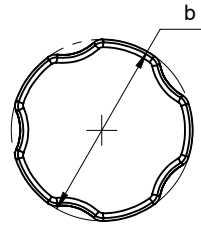
Standard Knob Colour is Black. Standard Cap Colour is Black.
 Different Colour Caps are available on minimum order of 100 nos each.
 Inserts : M.S. Toughened Blue Zinc Plating. SS-304 Inserts are also available on minimum order of 100 nos.

- I
- II
- III
- IV
- V
- VI
- VII
- VIII
- IX
- X
- XI
- XII
- XIII
- XIV

HANDLES

Knobs - Lobed Knob

Polyamide, MS



D **K** **S** - **X** - **A**

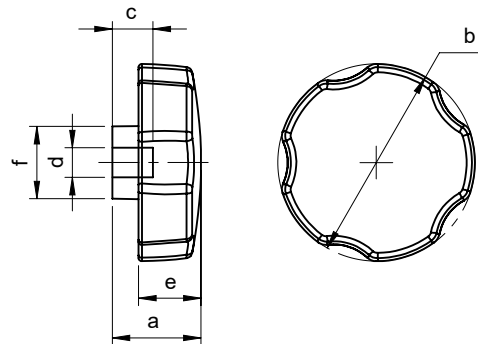
X	A					a	b	e	d	c					f		
30	05-10	05-16	05-20	05-25	05-30	22	Ø30	14	M5	10	16	20	25	30	Ø15.2		
	05-40									40							
	06-10	06-20	06-25	06-27	06-30												
	06-35	06-40	06-50	06-70													
	08-16	08-20	08-25	08-30	08-40												
	08-50	08-60	08-70														
40	06-10	06-16	06-20	06-25	06-30	28.5	Ø40	15.5	M6	10	16	20	25	30	Ø15.4		
	06-35	06-40	06-70							35	40	70					
	08-16	08-20	08-25	08-30	08-40												
	08-50	08-60	08-70														
50	08-16	08-20	08-25	08-30	08-40	28.6	Ø50	14.5	M8	16	20	25	30	40	Ø19.2		
	08-50	08-60								50	60						
	10-20	10-30	10-40	10-50	10-60												
	10-65	10-70	10-100	10-125													
60	10-20	10-30	10-40	10-50	10-60	32.5	Ø60	19	M10	20	30	40	50	60	Ø22.4		
	10-70	10-90	10-100	10-125						70	90	100	125				
	12-30	12-40	12-50	12-70	12-100												
	12-115																
80	10-30	10-40	10-50	10-60		32.5	Ø80	21	M10	30	40	50	60	Ø24.3			
	12-30	12-40	12-50	12-70	12-80												

Standard Knob Colour is Black.

Studs : M.S. Toughened Blue Zinc Plating. SS-304 Studs are also available on minimum order of 100 nos.

Knobs - Lobed Knob

Polyamide, MS



D K I - X - A

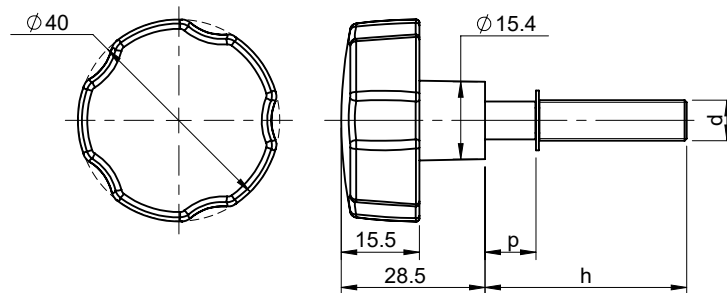
X	A			a	b	c	d			e	f
30	05	06	08	22	Ø30	10	M5	M6	M8	14	Ø15.2
40	04	06	08	28.4	Ø40	10	M4	M6	M8	15.5	Ø15.4
50	08	10		28.6	Ø50	16	M8	M10		14.5	Ø19.2
60	10	12		32.5	Ø60	16	M10	M12		19	Ø22.4
80	10	12		32.5	Ø80	16	M10	M12		21	Ø24.3

Standard Knob Colour is Black.

Inserts : M.S. Toughened Blue Zinc Plating. SS-304 Inserts are also available on minimum order of 100 nos.

Knobs - Lobed Knob

Polyamide, MS



D K S C - X - A

X	A		d		h	p
40	06-16	08-16	M6	M8	16	5

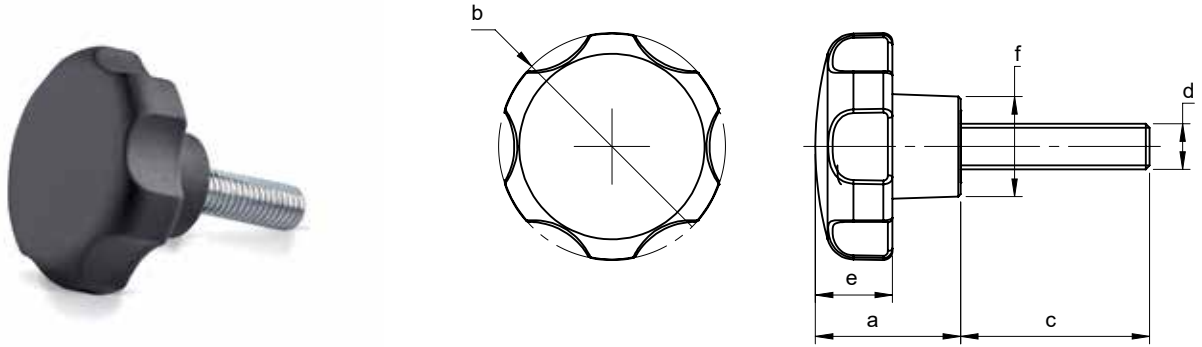
Studs : M.S. Toughened Blue Zinc Plating. SS-304 Studs are also available on minimum order of 100 nos.

- I
- II
- III
- IV
- V
- VI
- VII
- VIII
- IX
- X
- XI
- XII
- XIII
- XIV

HANDLES

Knobs - Lobed Knob

Polyamide



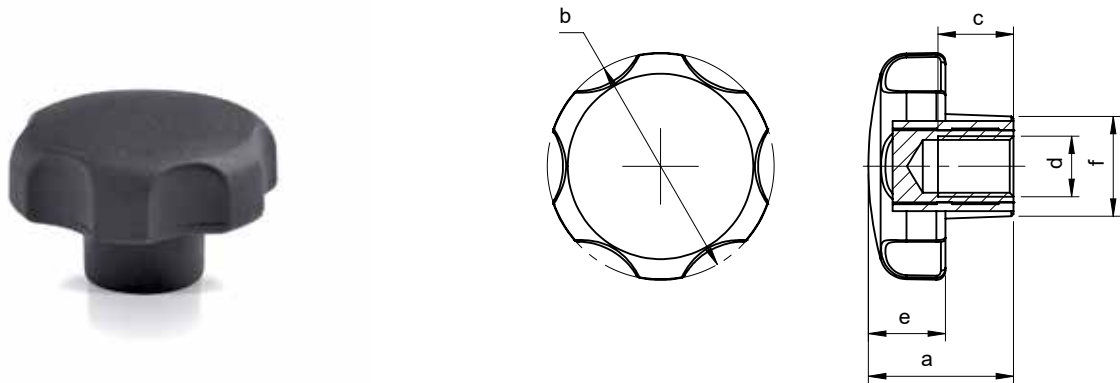
D K S 6 - X - A

X	A					a	b	e	d	c					f
30	05-10	05-16	05-20	05-25	05-30	19	Ø30	10	M5	10	16	20	25	30	Ø13.5
	05-40									40					
	06-10	06-16	06-20	06-25	06-27				M6	10	16	20	25	27	
	06-30	06-35	06-40	06-50	06-70					30	35	40	50	70	
40	06-10	06-16	06-20	06-25	06-30	25.5	Ø40	13.5	M6	10	16	20	25	30	Ø17.5
	06-35	06-40	06-70							35	40	70			
	08-16	08-20	08-25	08-30	08-40				M8	16	20	25	30	40	
	08-50	08-60	08-70							50	60	70			
50	10-20	10-25	10-30	10-40	10-50	32	Ø50	17	M10	20	25	30	40	50	Ø22
	10-60	10-65	10-70	10-100	10-125					60	65	70	100	125	

Standard Knob Colour is Black.
Studs : M.S. Toughened Blue Zinc Plating. SS-304 Studs are also available on minimum order of 100 nos.

Knobs - Lobed Knob

Polyamide, MS



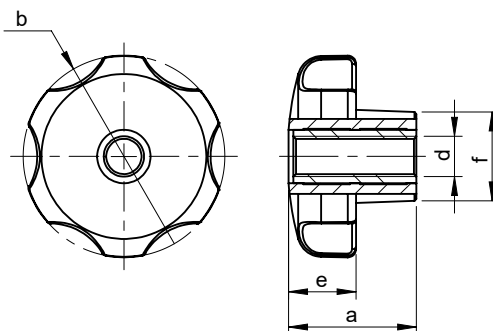
D K I 6 - X - A

X	A		a	b	c	d		e	f
30	05	06	19	Ø30	8	M5	M6	10	Ø13.5
40	06	08	25.5	Ø40	10	M6	M8	13.5	Ø17.5
50	08	10	32	Ø50	16	M8	M10	17	Ø22

Standard Knob Colour is Black.
Inserts : M.S. Toughened Blue Zinc Plating. SS-304 Inserts are also available on minimum order of 100 nos.

Knobs - Lobed Knob

Polyamide, MS



D K I 6 - TH - X - A

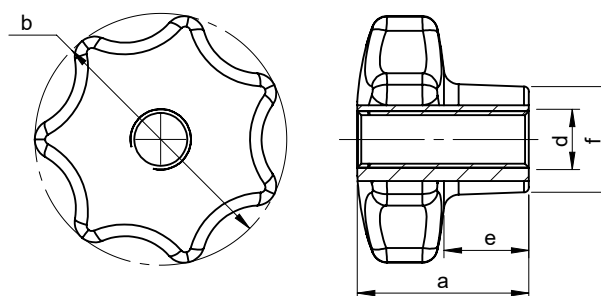
X	A		a	b	d		e	f
30	05	06	19	Ø30	M5	M6	10	Ø13.5
40	06	08	25.5	Ø40	M6	M8	13.5	Ø17.5
50	08	10	32	Ø50	M8	M10	17	Ø22

Standard Knob Colour is Black.

Inserts : M.S. Toughened Blue Zinc Plating. SS-304 Inserts are also available on minimum order of 100 nos.

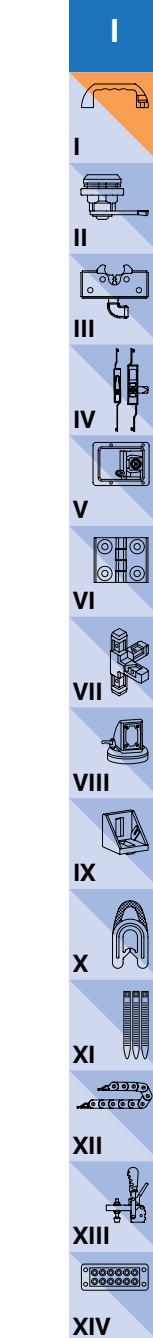
Knobs - Lobed Knob

SS-304



D S K I - X - SS - TH - A

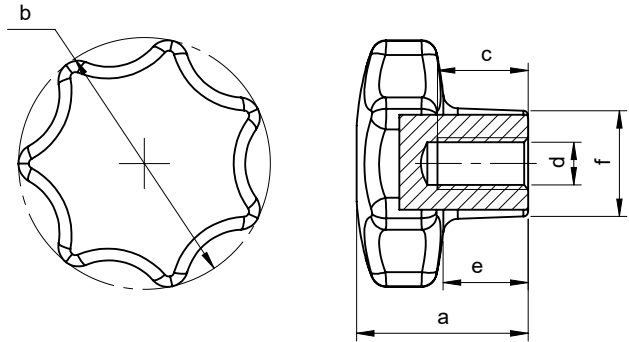
X	A		a	b	d		e	f		
40	06	08	32	Ø40	M6	M8	16	Ø16		
50	08	10	12	36	Ø50	M8	M10	M12	18	Ø22



HANDLES

Knobs - Lobed Knob

SS-304

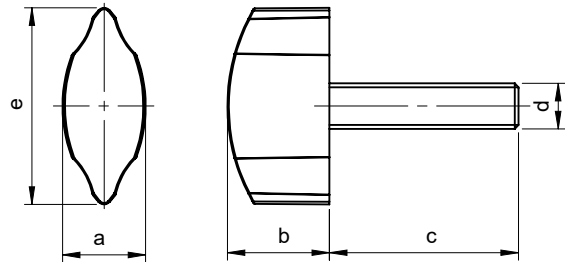


D S K I - X - SS - A

X	A				a	b	c	d			e	f
40	06	08			32	Ø40	15	M6	M8		16	Ø16
50	08	10	12		36	Ø50	18	M8	M10	M12	18	Ø22

Knobs - Winged Knob

Polyamide, MS



D K F S - X - A

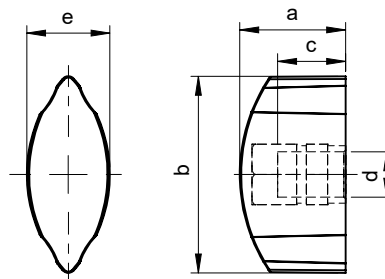
X	A					a	b	e	d	c					
26	03-16					11	13.5	26	M3	16					
	04-16	04-20	04-26						M4	16	20	26			
	05-10	05-16	05-20	05-25	05-30				M5	10	16	20	25	30	
	05-40								M6	40					
	06-10	06-16	06-20	06-25	06-27				M6	10	16	20	25	27	
	06-30	06-35	06-40	06-70					M6	30	35	40	70		
40	08-16	08-25	08-40			16	17	40	M8	16	25	40			

Standard Knob Colour is Black.

Studs : M.S. Toughened Blue Zinc Plating. SS-304 Studs are also available on minimum order of 100 nos.

Knobs - Winged Knob

Polyamide, MS



D K F I - X - A

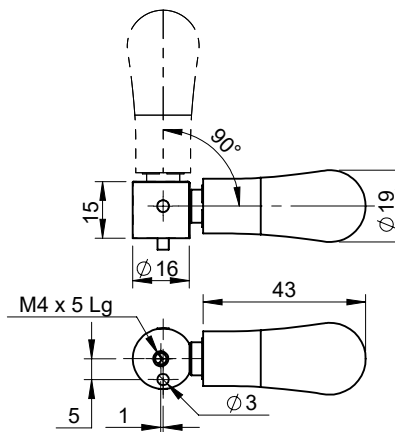
X	A			a	b	c	d			e
26	04	05	06	14	26	8	M4	M5	M6	11
40	06	08		17	40	10	M6	M8		16

Standard Knob Colour is Black.

Inserts : M.S. Toughened Blue Zinc Plating. SS-304 Inserts are also available on minimum order of 100 nos.

Folding Revolving Handle

Polyamide, Zinc



D F R H - 82

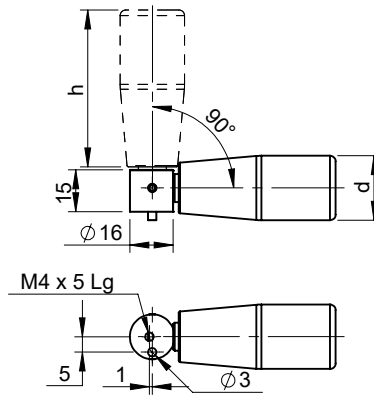
Part Code	Bush Finish
DFRH-82	Chrome Plated

- I
- II
- III
- IV
- V
- VI
- VII
- VIII
- IX
- X
- XI
- XII
- XIII
- XIV

HANDLES

Folding Revolving Handle

Polyamide, Zinc

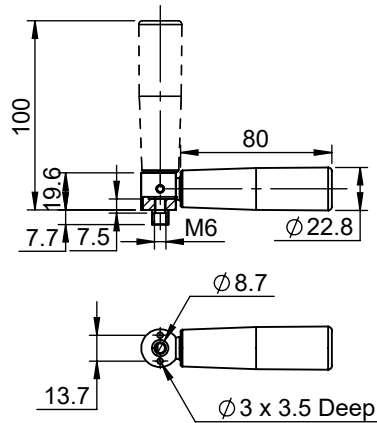


D F R H - X

X	d	h	Bush Finish
2272	22	55	Chrome Plated
2282	23	67	
22105	28.5	94	

Folding Revolving Handle

Polyamide, MS



D F R H - 23100

Part Code	Bush Finish
DFRH-23100	Green Plated

Fixed Handle

Polyamide, MS



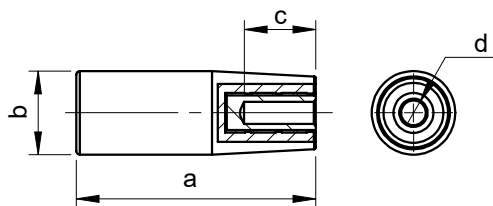
D F H S - X

X			a	b	c	d		
2366-06	2366-08	2366-10	67	Ø23	16	M6	M8	M10
2390-06	2390-08	2390-10	94	Ø28.5	28			

Studs : M.S. Toughened Blue Zinc Plating.

Fixed Handle

Polyamide, MS



D F H I - X

X		a	b	c	d	
2366-06	2366-08	67	Ø22	22	M6	M8
2390-10	2390-12	94	Ø29	30	M10	M12

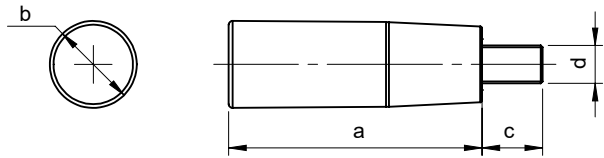
Studs : M.S. Toughened Blue Zinc Plating.

- I
- II
- III
- IV
- V
- VI
- VII
- VIII
- IX
- X
- XI
- XII
- XIII
- XIV

HANDLES

Revolving Handle

Polyamide, MS



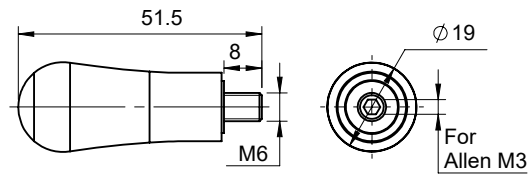
D R H - X

X			a	b	c	d		
2366-06	2366-08	2366-10	67	Ø23	16	M6	M8	M10
2390-08	2390-10	2390-12	94	Ø28.5	28	M8	M10	M12

Studs : M.S. Toughened Blue Zinc Plating.

Revolving Handle

Polyamide, MS

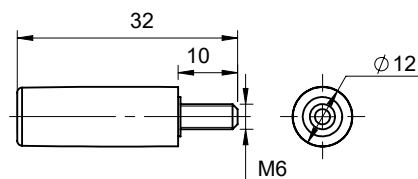


D R H - 82

Part Code	Stud Finish
DRH-82	Blue Zinc Plated

Revolving Handle

Polyamide, MS

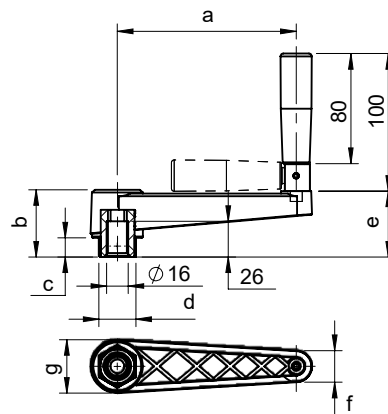


D R H - 1232 - 06

Part Code	Stud Finish
DRH-1232-06	Blue Zinc Plated

Crank Handle

Polyamide, MS



D H C - X

X	a	b	c	d	e	f	g
130	130	49	14	Ø27	48	Ø23	38.8
160	160	58.4	15	Ø34	54.4		44.7

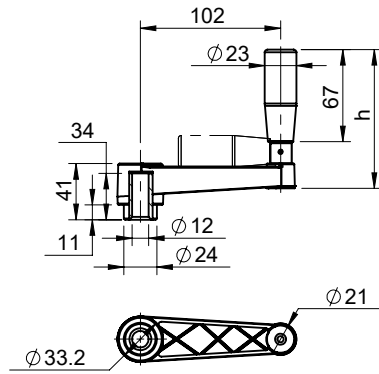
Inserts Finish : Green Plated.

- I
- II
- III
- IV
- V
- VI
- VII
- VIII
- IX
- X
- XI
- XII
- XIII
- XIV

HANDLES

Crank Handle

Polyamide, MS



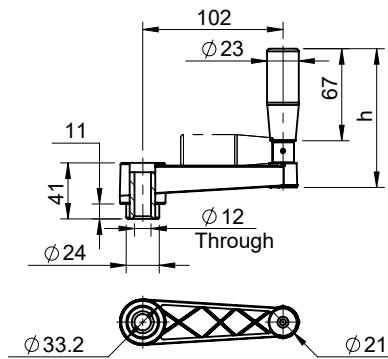
D H C - 102 - X

<input checked="" type="checkbox"/>	h	Handel Type
HD	102	Folding & Revolving
RH	86	Revolving

Inserts Finish : Chrome Plated.

Crank Handle

Polyamide, MS



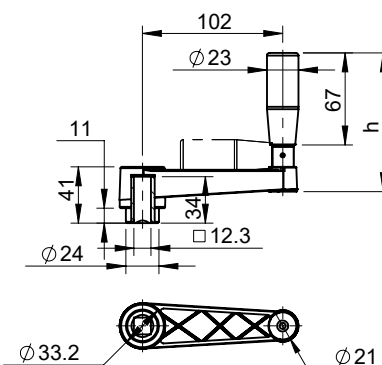
D H C - 102 - TH - X

<input checked="" type="checkbox"/>	h	Handel Type
HD	102	Folding & Revolving
RH	86	Revolving

Inserts Finish : Chrome Plated.

Crank Handle

Polyamide, MS



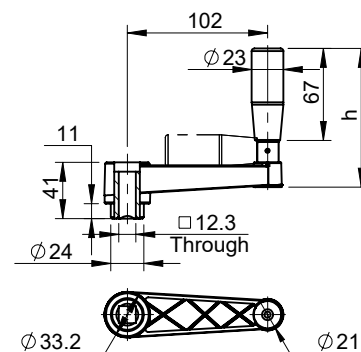
D H C - 102 - SQ - X

<input checked="" type="checkbox"/>	h	Handel Type
HD	102	Folding & Revolving
RH	86	Revolving

Inserts Finish : Chrome Plated.

Crank Handle

Polyamide, MS



D H C - 102 - SQTH - X

<input checked="" type="checkbox"/>	h	Handel Type
HD	102	Folding & Revolving
RH	86	Revolving

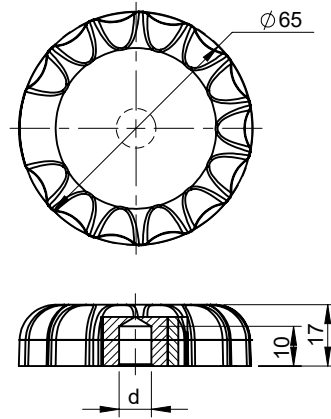
Inserts Finish : Chrome Plated.

- I
- II
- III
- IV
- V
- VI
- VII
- VIII
- IX
- X
- XI
- XII
- XIII
- XIV

HANDLES

Hand Wheel

Polyamide, MS

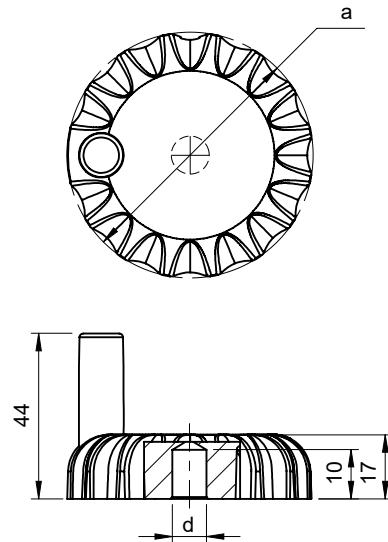


D H W K I - 65 - X

<input checked="" type="checkbox"/>	d
08	M8
10	M10
12	M12
Ø10	Ø10

Hand Wheel (Revolving)

Polyamide, MS

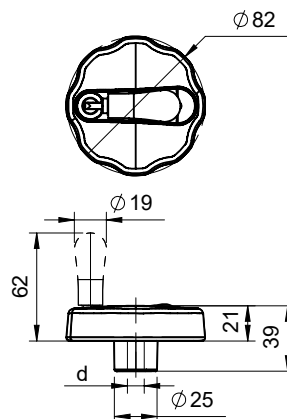


D H W K I - RH - 65 - X

<input checked="" type="checkbox"/>	d
08	M8
10	M10
12	M12
Ø8	Ø8
Ø10	Ø10

Hand Wheel (Revolving and Folding)

Polyamide, MS

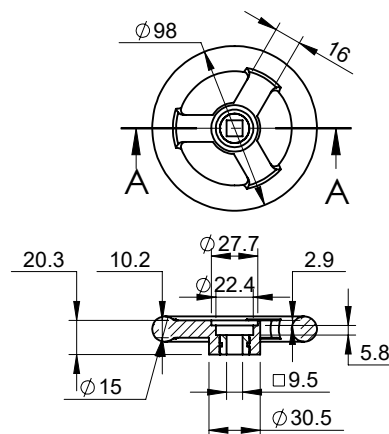


D H W - RHD - 82 - X

X	d
10	Ø10
12	Ø12

Hand Wheel

Polyamide, MS



D H W - 98 - 9.5

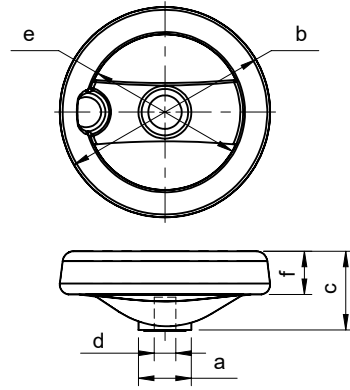
Part Code
DHW-98-9.5

- I
- II
- III
- IV
- V
- VI
- VII
- VIII
- IX
- X
- XI
- XII
- XIII
- XIV

HANDLES

Hand Wheel

Polyamide, MS

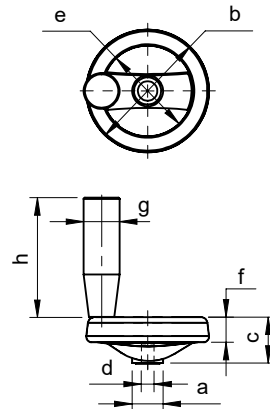


D H W - X - A

X	A		a	b	c	d		e	f
100	10	12	Ø24.8	Ø98.5	36.5	Ø10	Ø12	Ø72	20
124	14		Ø30.5	Ø124	44	Ø14		Ø97	22
160	14	16	Ø39.5	Ø160.5	51.5	Ø14	Ø16	Ø133	24.8

Hand Wheel (Fixed)

Polyamide, MS

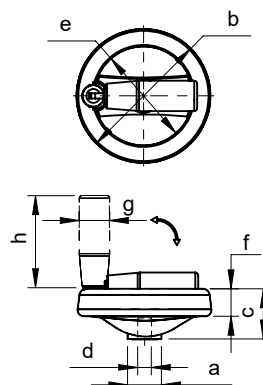


D H W - FH - X - A

X	A		a	b	c	d		e	f	g	h
100	10	12	Ø24.8	Ø98.5	36.5	Ø10	Ø12	Ø72	20	Ø22	67
124	14		Ø30.5	Ø124	44	Ø14		Ø97	22	Ø23	
160	14	16	Ø39.5	Ø160.5	51.5	Ø14	Ø16	Ø133	24.8	Ø28.5	94

Hand Wheel (Revolving and Folding)

Polyamide, MS

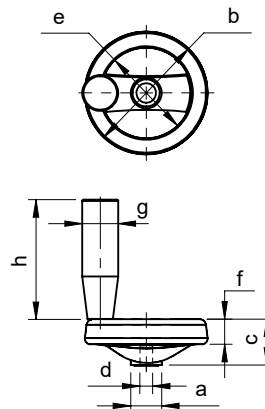


D H W - HD - X - A

X	A		a	b	c	d		e	f	g	h
100	10	12	Ø24.8	Ø98.5	36.5	Ø10	Ø12	Ø72	20	Ø23	67
124	14		Ø30.5	Ø124	44	Ø14		Ø97	22		
160	14	16	Ø39.5	Ø160.5	51.5	Ø14	Ø16	Ø133	24.8	Ø28.5	94

Hand Wheel (Revolving)

Polyamide, MS



D H W - RH - X - A

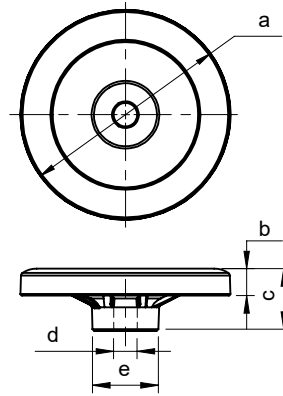
X	A		a	b	c	d		e	f	g	h
100	10	12	Ø24.8	Ø98.5	36.5	Ø10	Ø12	Ø72	20	Ø22	67
124	14		Ø30.5	Ø124	44	Ø14		Ø97	22	Ø23	
160	14	16	Ø39.5	Ø160.5	51.5	Ø14	Ø16	Ø133	24.8	Ø28.5	94

- I
- II
- III
- IV
- V
- VI
- VII
- VIII
- IX
- X
- XI
- XII
- XIII
- XIV

HANDLES

Hand Wheel

Aluminium



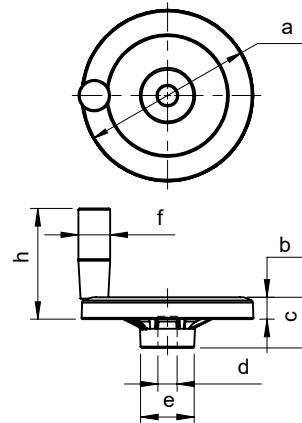
D H W A - X - P

P Finish
PC Black PC
STPC Silver Sparkle PC

X	a	b	c	d	e
125	Ø124	16	37	Ø12 x 20 Lg	Ø39
160	Ø160	18	40	Ø6	Ø38
200	Ø200	20	45	Ø8	Ø45

Hand Wheel (Revolving)

Aluminium



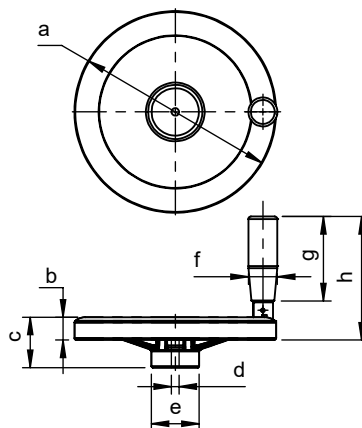
D H W A - X - RH - P

P Finish
PC Black PC
STPC Silver Sparkle PC

X	a	b	c	d	e	f	h
125	Ø124	16	37	Ø12 x 20 Lg	Ø39	Ø23	80.5
160	Ø160	18	40	Ø6	Ø38		81.5
200	Ø200	20	45	Ø8	Ø45		84

Hand Wheel (Revolving and Folding)

Aluminium



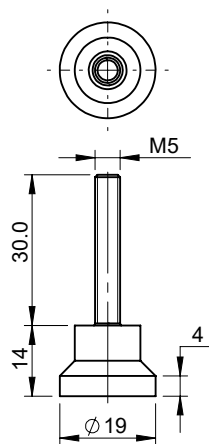
D H W A - X - HD - P

P Finish
PC Black PC
STPC Silver Sparkle PC

X	a	b	c	d	e	f	h
125	Ø124	16	37	Ø12 x 20 Lg	Ø39	Ø23	80.5
160	Ø160	18	40	Ø6	Ø38		81.5
200	Ø200	20	45	Ø8	Ø45		84

Leveling Base

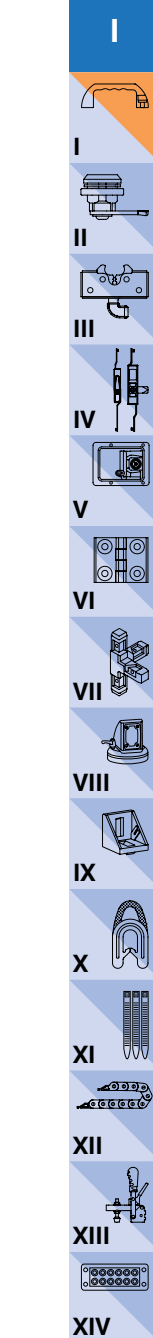
Polyamide, MS



D L B - 20 - A

Part Code	LC (kg)
DLB-20-A	15

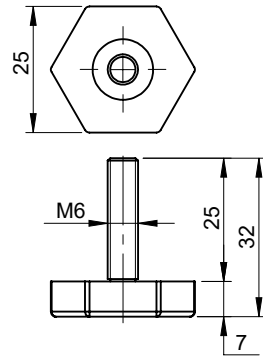
Studs : M.S. Toughened Blue Zinc Plating.



HANDLES

Leveling Base

Polyamide, MS



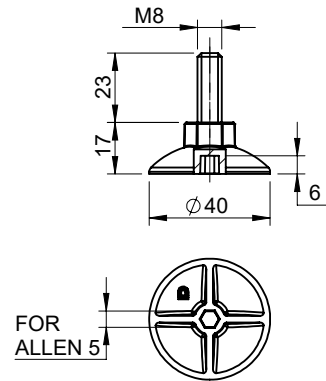
D L B H - 25 - 06 - 25

Part Code	LC (kg)
DLBH-25-06-25	--

Studs : Blue Zinc Plating.

Leveling Base

Polyamide, MS



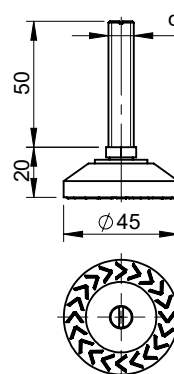
D L B H - 40 - 8 - 23

Part Code	LC (kg)
DLBH-40-8-23	--

Studs : Blue Zinc Plating.

Leveling Base

Polyamide, MS



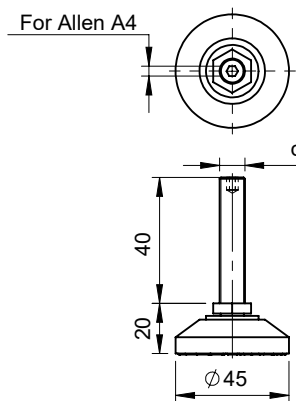
D L B - 45 - X

X		d		LC (kg)
10-50	12-50	M10	M12	70

Studs : M.S. Toughened Blue Zinc Plating.

Leveling Base

Polyamide, MS



D L B - 45 - A - 10 - 40

Part Code	LC (kg)
DLB-45-A-10-40	70

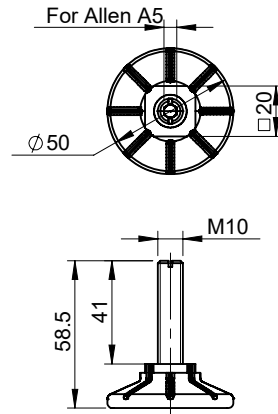
Studs : M.S. Toughened Blue Zinc Plating.

- I
- II
- III
- IV
- V
- VI
- VII
- VIII
- IX
- X
- XI
- XII
- XIII
- XIV

HANDLES

Leveling Base

Polyamide, MS



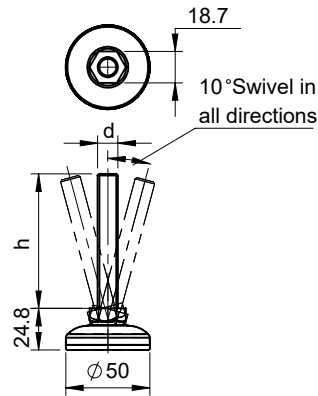
D L B - 50 - I

Part Code	LC (kg)
DLB-50-I	60

Studs : M.S. Toughened Blue Zinc Plating.

Leveling Base

Polyamide, MS



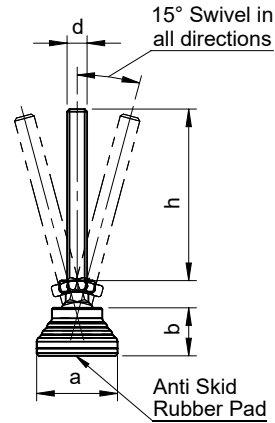
D L B - 50 - E - X

X		d	h		LC (kg)
1075	10100	M10	75	100	35
1275	12100	M12			

Studs : M.S. Toughened Blue Zinc Plating.

Leveling Base

Polyamide



D L B - X - SS - A

X	A				a	b	d	h			
32	0825	0868	08100		Ø32	19	M8	25	68	100	
	1025	1028	1068	1080			M10	25	28	68	80
	10100	10120	10180				M12	100	120	180	
	1225	1250	1268	12100			M12	25	50	68	100
60	0850	0868	08100		Ø60	25.5	M8	50	68	100	
	1068	1080	10100	10120			M10	68	80	100	120
	10180						M10	180			
	1268	1250	1280	12100			M12	68	50	80	100
	1668	16100	16140	16160			M16	68	100	140	160
	20100	20160					M20	100	160		

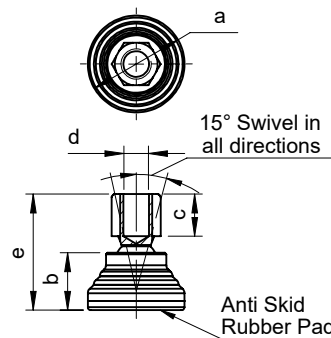
Studs : M.S. Toughened Blue Zinc Plating. SS-304 Studs are also available on minimum order of 100 nos.

*Use "SS" in the Part Code when SS-304 studs are required.

In "60" : For Antiskid Rubber Pad add R : **DLB-60-R**

Leveling Base

Polyamide, MS



D L B I - X - A - SS

X	A			a	b	c	d			e
32	08	10	12	Ø32	19	10	M8	M10	M12	38.4
60				Ø60	25.5		M8	M10	M12	44.5

Inserts : M.S. Toughened Blue Zinc Plating. SS-304 Inserts are also available on minimum order of 100 nos.

*Use "SS" in the Part Code when SS-304 studs are required.

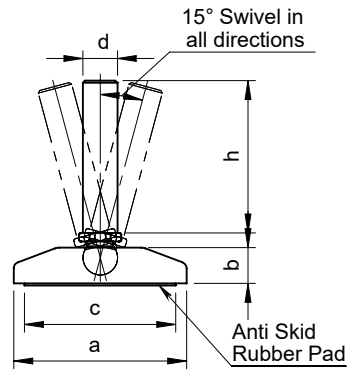
In "60" : For Antiskid Rubber Pad add R : **DLB-60-R**

- I
- II
- III
- IV
- V
- VI
- VII
- VIII
- IX
- X
- XI
- XII
- XIII
- XIV

HANDLES

Leveling Base

Polyamide, MS, SS-304



D	L	B	-	X	-	SS	-	A
---	---	---	---	---	---	----	---	---

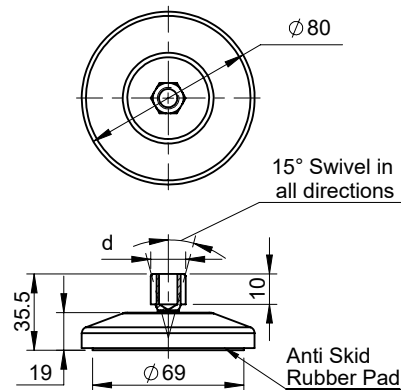
X	A				a	b	c	d	h			
80	0850	0868	08100		Ø80	19	69	M8	50	68	100	
	1068	1080	10100	10120				M10	68	80	100	120
	10180								180			
	1250	1268	12100					M12	50	68	100	
	1668	16100	16140	16150				M16	68	100	140	150
	16160								160			
	20100	20160										
100	16100	16150	16200		Ø102	24		M16	100	150	200	
	20100	20160						M20	100	160		
	24140	24160	24200	24250								
	24300							M24	140	160	200	250
									300			

Studs : M.S. Toughened Blue Zinc Plating. SS-304 Studs are also available on minimum order of 100 nos.

*Use "SS" in the Part Code when SS-304 studs are required.

Leveling Base

Polyamide, MS, SS-304



D	L	B	I	-	80	-	A	-	SS
---	---	---	---	---	----	---	---	---	----

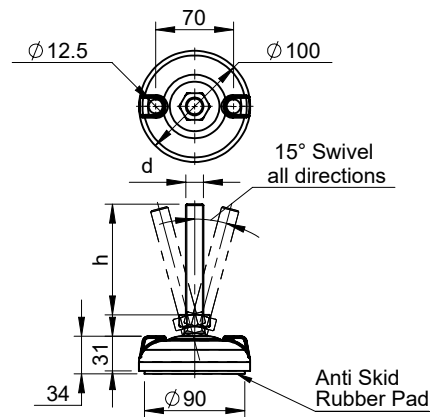
A				d			LC (kg)	
08	10	12		M8	M10	M12		250

Inserts : M.S. Toughened Blue Zinc Plating. SS-304 Inserts are also available on minimum order of 100 nos.

*Use "SS" in the Part Code when SS-304 studs are required.

Leveling Base

Polyamide, MS, SS-304



D	L	B	G	-	100	-	SS	-	X
----------	----------	----------	----------	---	------------	---	-----------	---	----------

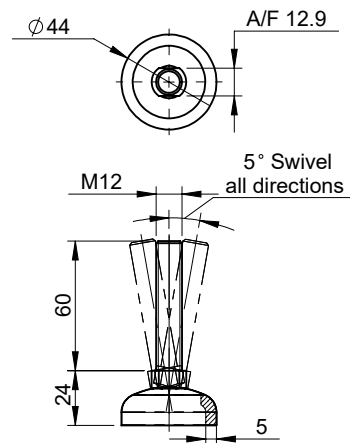
X				d	h			
16100	16150			M16	100	150		
20100	20160			M20	100	160		
24140	24160	24200	24250	M24	140	160	200	250
24300					300			

Studs : M.S. Toughened Blue Zinc Plating. SS-304 Studs are also available on minimum order of 100 nos.

*Use "SS" in the Part Code when SS-304 studs are required.

Leveling Base

MS



D	L	B	M	-	44	-	1260
----------	----------	----------	----------	---	-----------	---	-------------

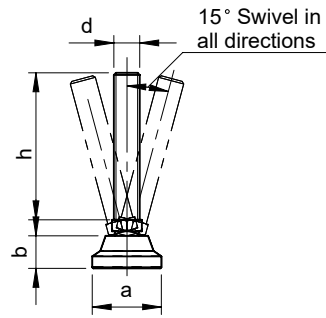
Part Code
DLBM-44-1260
Studs : M.S. Toughened Blue Zinc Plating.

- I
- II
- III
- IV
- V
- VI
- VII
- VIII
- IX
- X
- XI
- XII
- XIII
- XIV

HANDLES

Leveling Base

MS, SS-304



D L B M T - X - SS - A

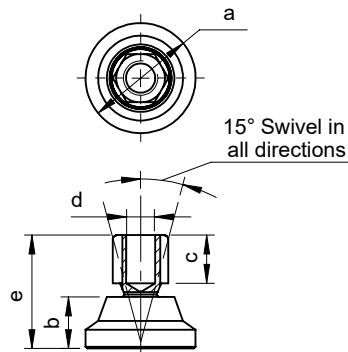
X	A				a	b	d	h			
25	0850	0868	08100		Ø25	25	M8	50	68	100	
	1068	1080	10100	10120			M10	68	80	100	120
	10180						M10	180			
	1250	1268	1280	12100			M12	50	68	80	100
	1650	1668	16100	16140			M16	50	68	100	140
32	0850	0868	08100		Ø80	19	M8	50	68	100	
	1068	1080	10100	10120			M10	68	80	100	120
	10180						M10	180			
	1250	1268	1280	12100			M12	50	68	80	100
	1650	1668	16100	16140			M16	50	68	100	140
	16150	16160					M16	150	160		

Studs : M.S. Toughened Blue Zinc Plating. SS-304 Studs are also available on minimum order of 100 nos.

*Use "SS" in the Part Code when SS-304 studs are required.

Leveling Base

MS, SS-304



D L B M T I - X - A - SS

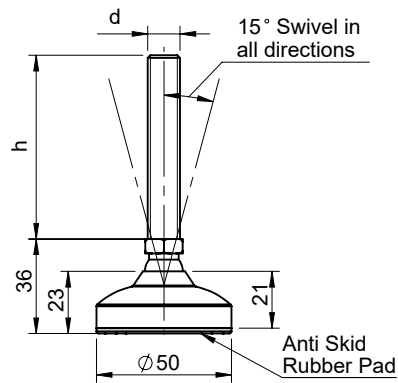
X	A			a	b	c	d			e
25	08	10	12	Ø25	15	10	M8	M10	M12	33
32				Ø32						

Inserts : M.S. Toughened Blue Zinc Plating. SS-304 Inserts are also available on minimum order of 100 nos.

*Use "SS" in the Part Code when SS-304 studs are required.

Leveling Base

MS, SS-304



D L B M T - 50 - R - SS - A

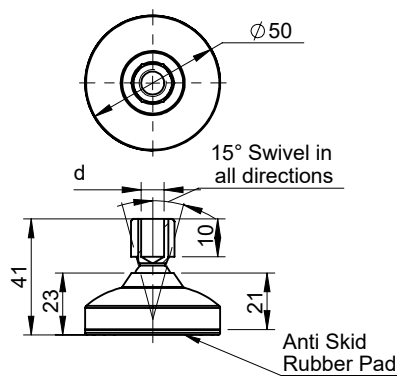
A				d	h			
0850	0868	08100		M8	50	68	100	
1068	1080	10100	10120	M10	68	80	100	120
10180					180			
1250	1268	1280	12100	M12	50	68	80	100
1650	1668	16100	16140	M16	50	68	100	140
16150	16160				150	160		

Studs : M.S. Toughened Blue Zinc Plating. SS-304 Studs are also available on minimum order of 100 nos.

*Use "SS" in the Part Code when SS-304 studs are required.

Leveling Base

MS, SS-304



D L B M T I - 50 - R - A - SS

A				d		
08	10	12		M8	M10	M12

Inserts : M.S. Toughened Blue Zinc Plating. SS-304 Inserts are also available on minimum order of 100 nos.

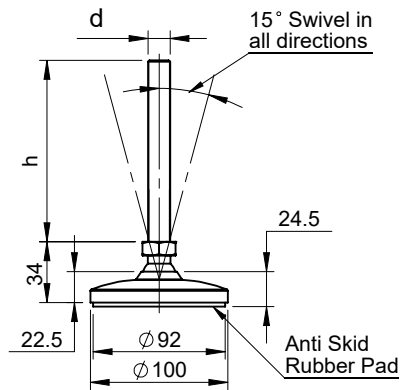
*Use "SS" in the Part Code when SS-304 studs are required.

- I
- II
- III
- IV
- V
- VI
- VII
- VIII
- IX
- X
- XI
- XII
- XIII
- XIV

HANDLES

Leveling Base

MS, SS-304



D L B M T - 100 - R - SS - A

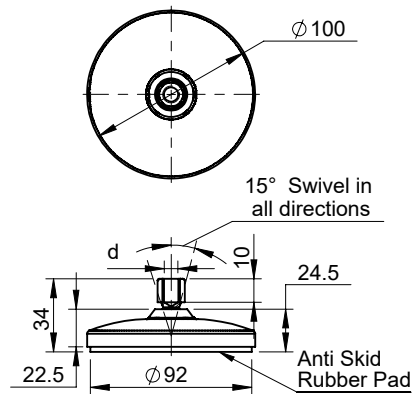
A				d	h			
0850	0868	08100		M8	50	68	100	
1068	1080	10100	10120	M10	68	80	100	120
10180					180			
1250	1268	1280	12100	M12	50	68	80	100
1650	1668	16100	16140	M16	50	68	100	140
16150	16160				150	160		
20100	20160			M20	100	160		

Studs : M.S. Toughened Blue Zinc Plating. SS-304 Studs are also available on minimum order of 100 nos.

*Use 'SS' in the Part Code when SS-304 studs are required.

Leveling Base

MS, SS-304



D L B M T I - 100 - R - A - SS

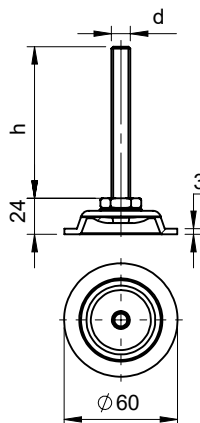
A			d		
08	10	12	M8	M10	M12

Inserts : M.S. Toughened Blue Zinc Plating. SS-304 Inserts are also available on minimum order of 100 nos.

*Use 'SS' in the Part Code when SS-304 studs are required.

Leveling Base

MS



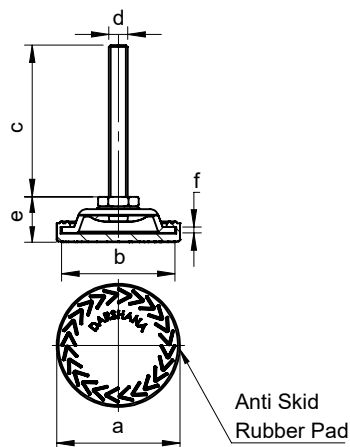
D L B M - 60 - A

A				d	h			
1068	10100			M10	68	100		
1268	1280	12100	12150	M12		80	100	150
1668	16100	16150	16160	M16		100	150	160

DLBM-60 for MS | DLBS-60 for SS-304 | Base is Nickel Plating | All Studs are Blue Zinc Plated

Leveling Base

MS



D L B M - 60 - R - A

A				d	h			
1068	10100			M10	68	100		
1268	12100			M12				
1668	16100	16150	16160	M16			150	160

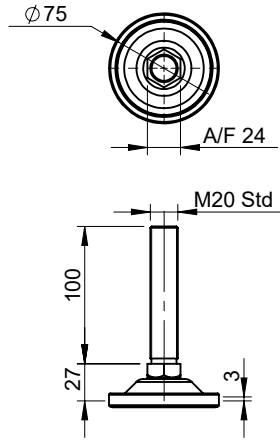
DLBM-60-R for MS | DLBS-60-R for SS-304 | Base is Nickel Plating | All Studs are Blue Zinc Plated

- I
- II
- III
- IV
- V
- VI
- VII
- VIII
- IX
- X
- XI
- XII
- XIII
- XIV

HANDLES

Leveling Base

Mail Steel

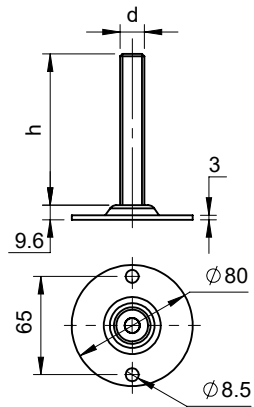


D L B M - 75 - R - 20100

Part Code
DLBM-75-R-20100
Studs : M.S. Toughened Blue Zinc Plating.

Leveling Base

MS



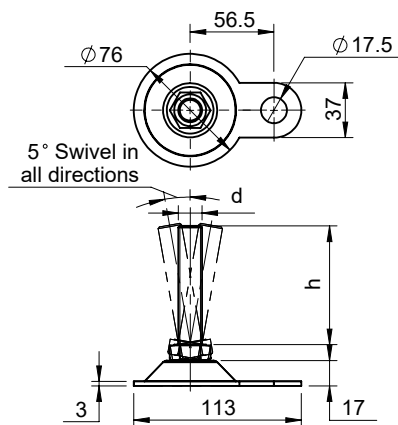
D L B M - 80 - A

A	d	h	LC (kg)
1285	M12	85	750
16240	M16	240	

Base & Stud is Blue Zinc Plating.

Leveling Base

MS



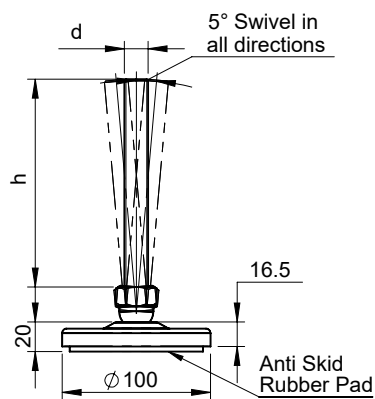
D L B M - 76 - A

A		d	h	
1068	10100	M10	68	100
1268	12100	M12		
16100	16160	M16	100	160

Base & Stud is Blue Zinc Plating.

Leveling Base

MS



D L B M - 100 - R - A

A			d	h		
12150	16150	20150	M12	M16	M20	150

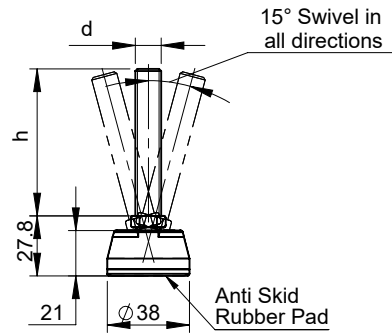
Base & Stud is Blue Zinc Plating.

- I
- II
- III
- IV
- V
- VI
- VII
- VIII
- IX
- X
- XI
- XII
- XIII
- XIV

HANDLES

Leveling Base

Zinc, MS



D L B Z - 38 - R - SS - A

A				d	h			
0850	0868	08100		M8	50	68	100	
1068	1080	10100	10120	M10	68	80	100	120
10180					180			
1250	1268	1280	12100	M12	50	68	80	100
1650	1668	16100	16140	M16	50	68	100	140
16150	16160				150	160		

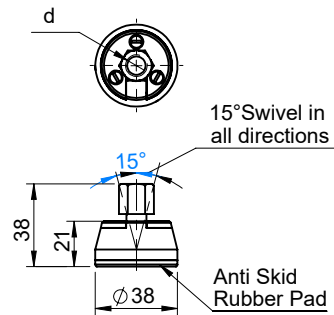
Base : Black Powder Coated

Studs : M.S. Toughened Blue Zinc Plating. SS-304 Studs are also available on minimum order of 100 nos.

*Use "SS" in the Part Code when SS-304 studs are required.

Leveling Base

Zinc, MS



D L B Z I - 38 - A - SS

A			d		
08	10	12	M8	M10	M12

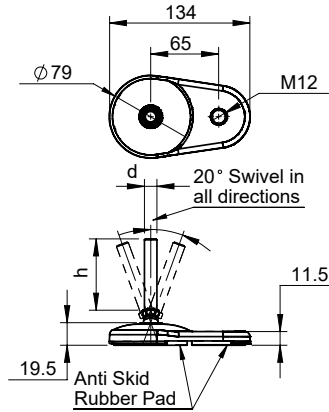
Base : Black Powder Coated

Inserts : M.S. Toughened Blue Zinc Plating. SS-304 Inserts are also available on minimum order of 100 nos.

*Use "SS" in the Part Code when SS-304 studs are required.

Leveling Base

Zinc, MS



D L B Z F - 80 - SS - A

A				d	h			
0850	0868	08100		M8	50	68	100	
1068	1080	10100	10120	M10	68	80	100	120
10180					180			
1250	1268	1280	12100	M12	50	68	80	100
1650	1668	16100	16140	M16	50	68	100	140
16150	16160				150	160		
20100	20160			M20	100	160		

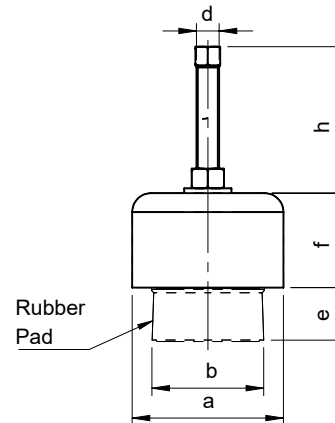
Base : Black Powder Coated

Studs : M.S. Toughened Blue Zinc Plating. SS-304 Studs are also available on minimum order of 100 nos.

*Use "SS" in the Part Code when SS-304 studs are required.

Anti-Vibration Leveling Base

MS



D A V L B M - X - A

X	A		a	b	d			h		e	f		
80	12-78	16-103	20-138	Ø80	Ø58	M12	M16	M20	78	103	138	28.5	50
123		16-101	20-138	Ø123	Ø107				101				
160		16-103	20-136	Ø160	Ø143				103				

Base : Yellow Powder Coated

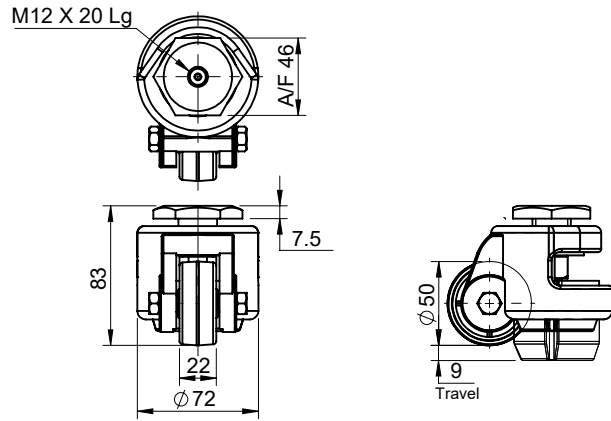
Studs : M.S. Toughened Blue Zinc Plating.

- I
- II
- III
- IV
- V
- VI
- VII
- VIII
- IX
- X
- XI
- XII
- XIII
- XIV

HANDLES

Leveling Foot Castor

Aluminium, MS

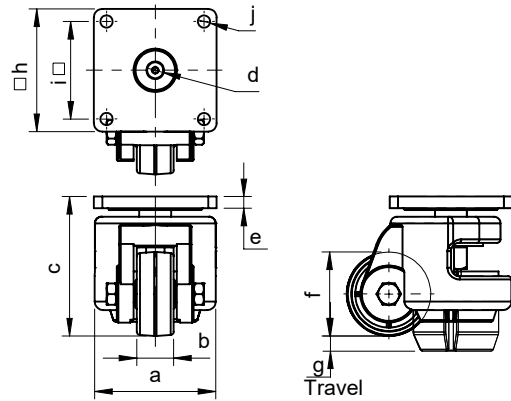


L C F - N - 100

Part Code
LCF-N-100
Finish : Gray Powder Coated

Leveling Foot Castor

Aluminium, MS



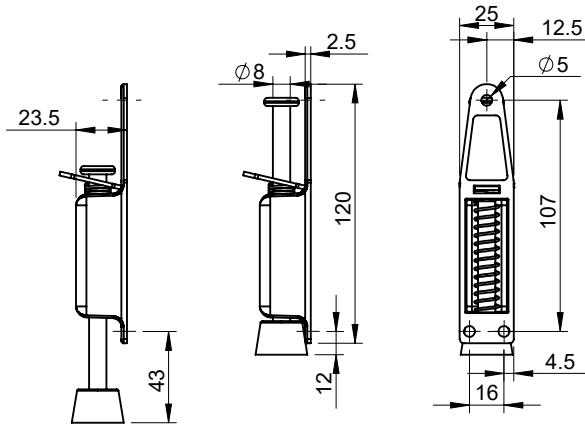
L C F - P - X

X	a	b	c	d	e	f	g	h	i	j
100	Ø72	22	83	M12	7	Ø50	9	73	58	Ø7
140	Ø100	31	121	M10	8	Ø72	20	96	70	Ø11

Finish : Gray Powder Coated

Door Stopper

Zinc, MS

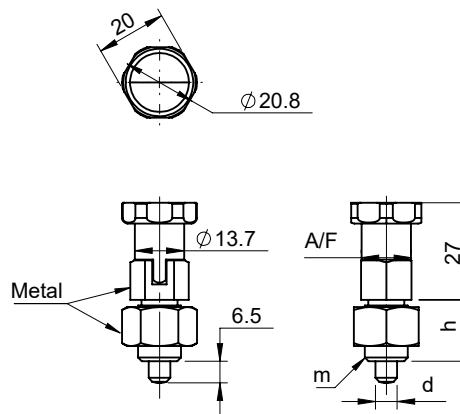


D Z D S - 109

Part Code
DZDS-109
Finish : Black Powder Coated

Index Plunger

Polyamide, MS, Zinc



D M I P R - 20 - A

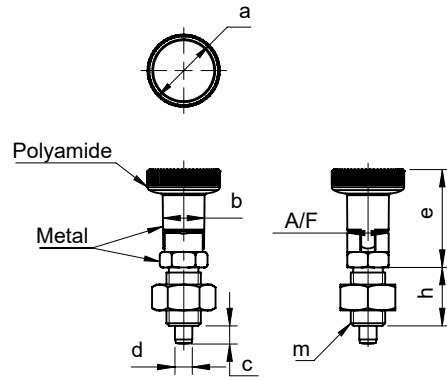
A			A / F			d			m			h		
2710	2712	2716	14	14	19	Ø5	Ø6	Ø8	M10	M12	M16	17	17	23
Knob : Polyamide Pin : SS-304 Stud : MS All Studs are Blue Zinc Plated														
Use "M" Part Code when Zinc Knobs are required														

- I
- II
- III
- IV
- V
- VI
- VII
- VIII
- IX
- X
- XI
- XII
- XIII
- XIV

HANDLES

Index Plunger

Polyamide, MS



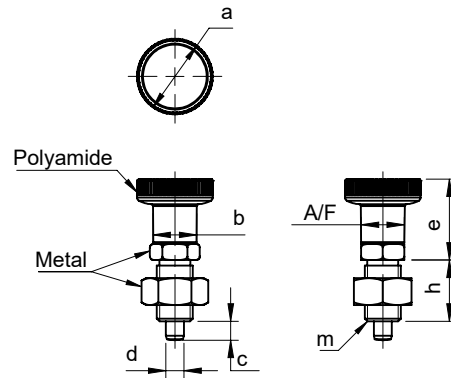
D I P R - X - A

X	A	A / F	a	b	c	d	m	h	e
21	2810	12	Ø21	Ø12.2	5	Ø5	M10	17	28.5
25	3412	14	Ø25	Ø14.2	6	Ø6	M12	20	34
30	4316	19	Ø30	Ø18.3	8	Ø8	M16	26	43

Knob : Polyamide | Pin : SS-304 | Stud : MS | All Studs are Blue Zinc Plated

Index Plunger

Polyamide, MS



D I P R F - X - A

X	A	A / F	a	b	c	d	m	h	e
21	2810	12	Ø21	Ø12.2	5	Ø5	M10	17	22.5
25	3412	14	Ø25	Ø14.2	6	Ø6	M12	20	28
30	4316	19	Ø30	Ø18.3	6	Ø8	M16	26	43.5

Knob : Polyamide | Pin : SS-304 | Stud : MS | All Studs are Blue Zinc Plated



Ideas



Darshana Industries Pvt. Ltd.

📍 Head Office & Factory:
Sub Plot No. 32, Final Plot No. 6,
Ramtekdi Industrial Estate, Hadapsar,
Pune-411 028. Maharashtra, INDIA.

☎ Tel: +91 20 2951 1572

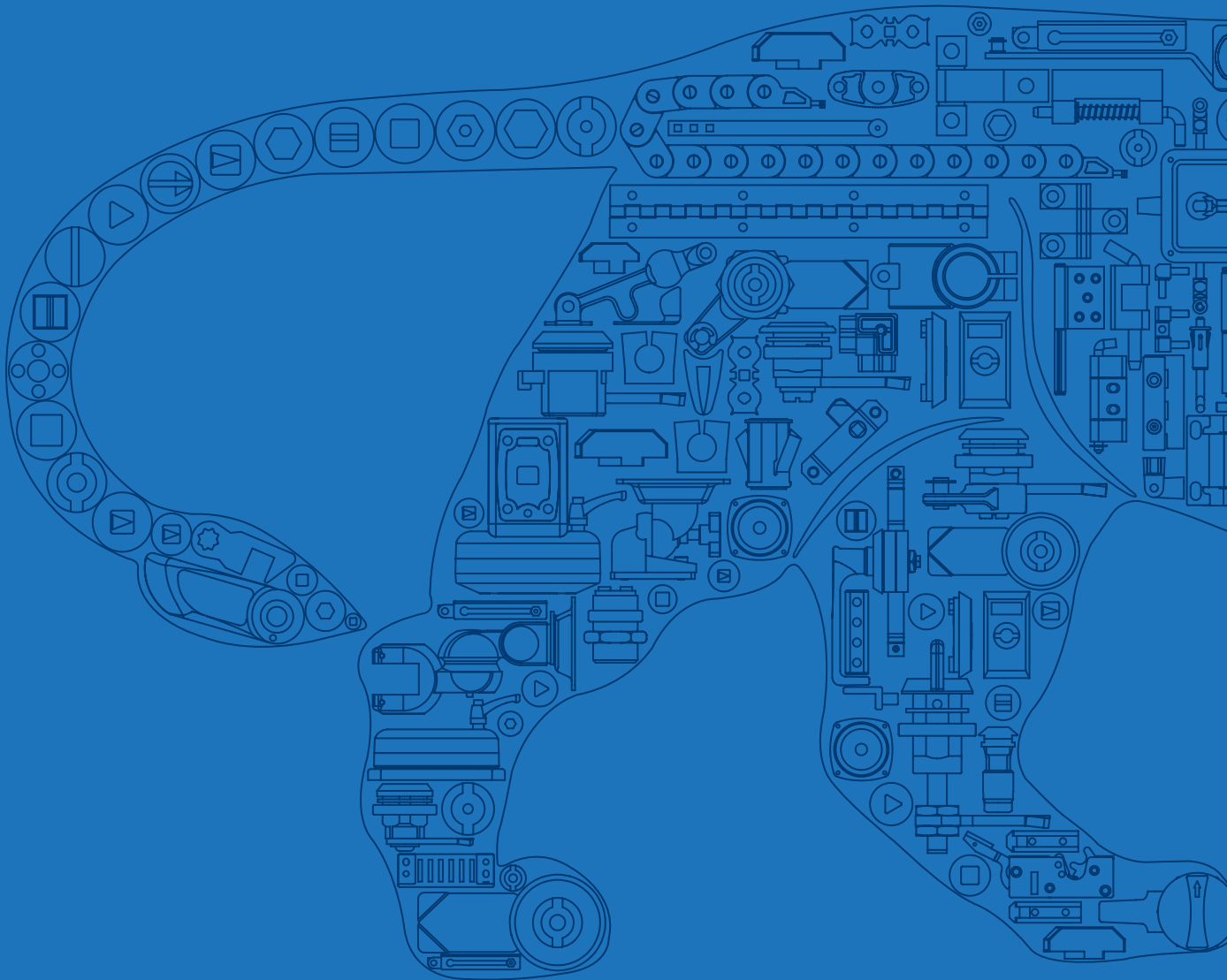
🌐 darshanaindustries.com

Head of Sales & Exports

👤 **Sanket Sutrave**
✉ ssutrave@darshanaindustries.com

Head of Business Development

👤 **Jethan Reddy**
✉ jmadhireddy@darshanaindustries.com



Made in India 🌐 Made for You